

STORM WATER DRAIN #384 to serve SIERRA HILLS 2ND ADDITION 468-84815 (751506)

GENERAL NOTES

- Contractor will be required to provide a minimum advance notice of two (2) working days to utility companies prior to starting any excavation as follows:
 - Kansas One-Call 1-800-DIG SAFE
 - The Contractor must notify the following in case of an emergency:
 - Cox Communications 260-7204
 - Kansas Gas Service 383-8600
 - Westar 383-8600
 - Peoples Natural Gas Company 1-800-303-0357
 - AT&T 1-800-286-8313
 - City of Wichita Water Department 262-6000
 - City of Wichita Sewer Maintenance 262-6000
- Underground utility service lines and overhead utility pole lines are to be adjusted as necessary by others prior to construction unless the plans specifically call for their adjustment by the Contractor or unless the plans specifically identify a utility to be adjusted by its owner during construction. Existing utilities and their location, as shown on the plans, represent the best information obtainable for design. Location information has been obtained from the various utility companies and is either from company record drawings or company-provided field locations. The Contractor will be required to work around existing utilities within the right-of-way which do not conflict with proposed construction.
- Rubble from the removal of miscellaneous structures and excess excavation which is to be wasted shall be disposed of on sites to be provided by the Contractor. These sites shall be approved by the Engineer as to suitability, appearance and site location. Locations that, in the opinion of the Engineer, will leave an unsightly appearance will not be approved.
- All disposal sites must be approved by the Kansas Department of Health and Environment. Material either stockpiled or disposed of in a flood plain would require a Kansas State Board of Agriculture permit. Any material dumped in waters of the United States or wetlands is subject to U.S. Corps permitting regulations. Any material buried or stockpiled beyond approved of Engineers construction limits would require additional archeological investigations unless buried in a previously approved borrow location.
- The Engineer shall take field ties to all quarter section corners. The Contractor shall set a City survey monument in the required location where such quarter section corners fall within the limits of pavement construction. Survey monuments will be furnished by the City. The Engineer will accurately locate and install the iron at the quarter section corner. This work will not be paid for directly, but shall be considered subsidiary to the other pay items of work in the contract.
- The Contractor shall give all property owners and/or tenants of developed property directly abutting the construction of this project a minimum of ten (10) days advance notice prior to start of construction.
- For all ponds, the pond bottom and sides (to an elevation of 1.0' above the static pool) are to be lined with clay to a minimum depth of 1 foot, moisture conditioned and compacted to a minimum of 95 percent of standard proctor density (ASTM D-698) from minus 3 to plus 3 percent of optimum moisture content. Pond liner shall be clay soil with a minimum P.I. value of 30 or must be approved by a geotechnical engineer; soil to be paid for as "Pond Liner C.Y."
- All trees along the perimeter of Sierra Hills 2nd Addition shall be protected during construction. Any trimming or removal of tree rows must be approved by the Engineer. All other trees interior to Sierra Hills 2nd Addition are to be removed by the developer.
- Prior to final project acceptance, representatives of the Contractor, Owner, and Engineer shall meet on site to conduct a final project evaluation. A punchlist agreed upon by all parties shall be prepared and all items addressed prior to final project acceptance.
- All waste areas for excess cut must be approved by the engineer. All excess material is to remain on site.
- The developer has an existing stockpile of topsoil on site that will need to be moved to a new location on site and kept separate from other excavation. The location will be determined by the developer. The volume of the stockpile is included in the bid item for excavation.
- The Contractor shall seed, fertilize and mulch all disturbed areas upon completion of construction. Incidental to the bid item for "Project Seeding". Reserve 'B'; Reserve 'C'; Reserve 'D' and the Pawnee Street ROW shall be 'Permanent Seeding', all other areas may be 'Temporary Seeding'.

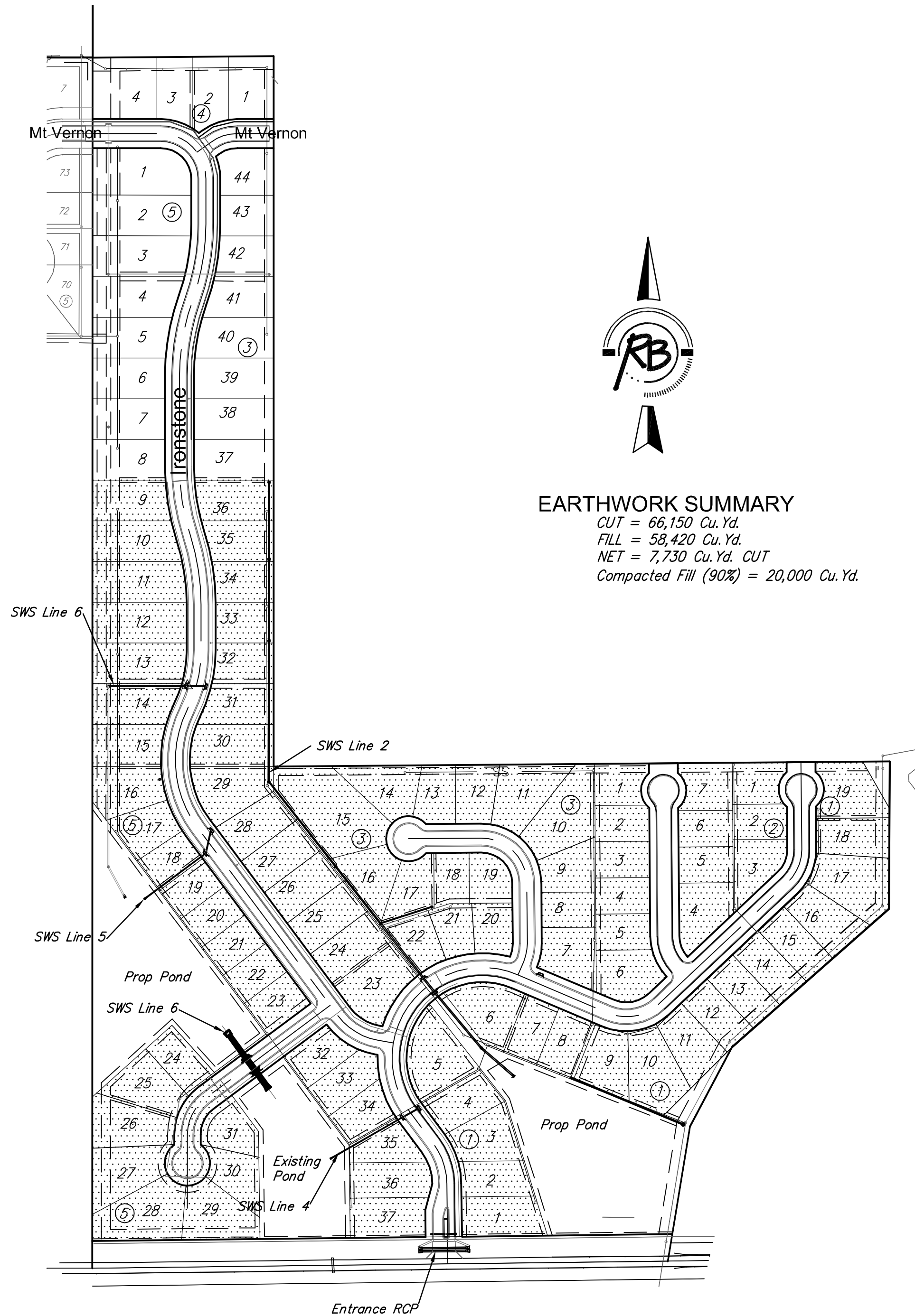
BENCH MARKS

BENCH MARK #1: SRB BRASS DISC 1008.17' E. & 55.63' N. OF THE CENTERLINE INTERSECTION PAWNEE AVENUE & 127TH STREET EAST ELEVATION = 1336.63 (NGVD29)

BENCH MARK #2: CHISELED SQUARE ON THE TOP OF A CONCRETE HEADWALL AT THE NORTHWEST CORNER OF A BRIDGE, 981 FEET NORTH AND 13 FEET WEST OF THE SOUTHWEST CORNER OF SECTION 36, T27S, R2E ELEVATION = 1308.29 (NGVD29) (SEE VICINITY MAP)

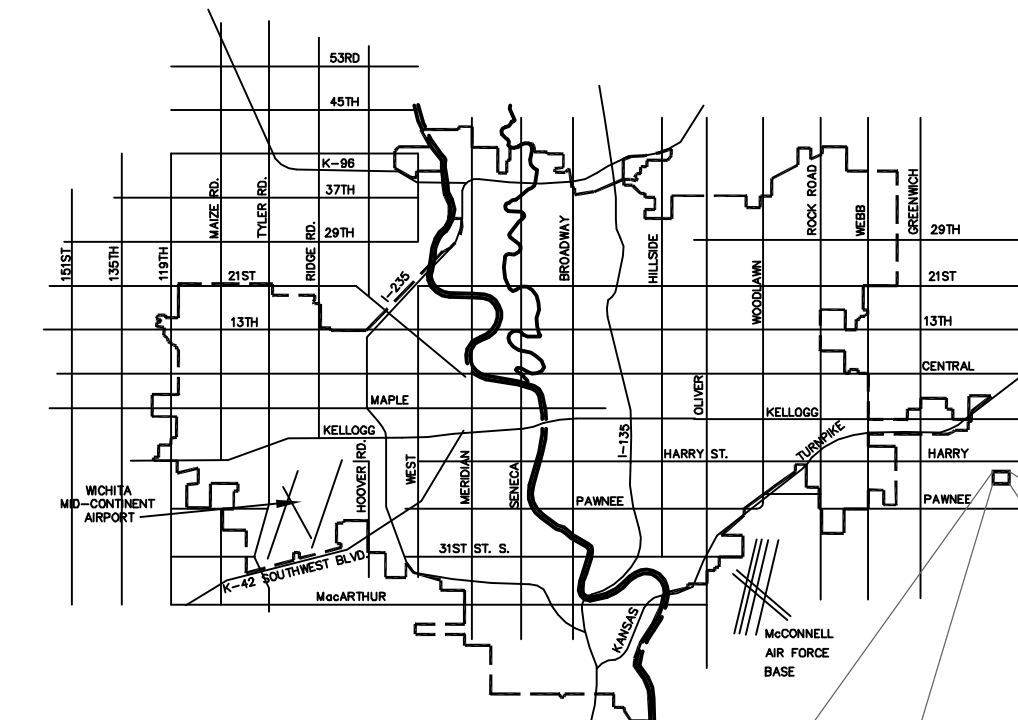
SHEET INDEX

- TITLE
- 2-3. SITE GRADING
- 4-6. SWS LINE 1
- 7-8. SWS LINE 1A & 1B
- 9-12. SWS LINE 2
13. SWS LINE 2A
14. SWS LINE 3
15. SWS LINE 4
16. SWS LINE 5
17. SWS LINE 6
- 18-19. SWS LINE 7
20. ENTRANCE RCP
21. POND 1
22. POND 1 - HEADWALL DETAIL
23. POND 2 WEIR MODIFICATION
24. POND 3
25. POND 3 WEIR DETAIL
26. WEST BASIN WATER QUALITY CALCS
27. EAST BASIN WATER QUALITY CALCS
28. TYPE 1A INLET (DOUBLE) DETAIL
29. TYPE 1A INLET (TRIPLE) DETAIL
30. PRECAST MH DETAIL
31. SNOOT DETAIL
- 32-33. 4 CORNER LOT GRADING
- 34-35. PLAN BMP
- 36-40. BMP DETAILS
- 41-42. SOIL REPORT
43. ADDITION BUBBLE MAP

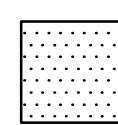
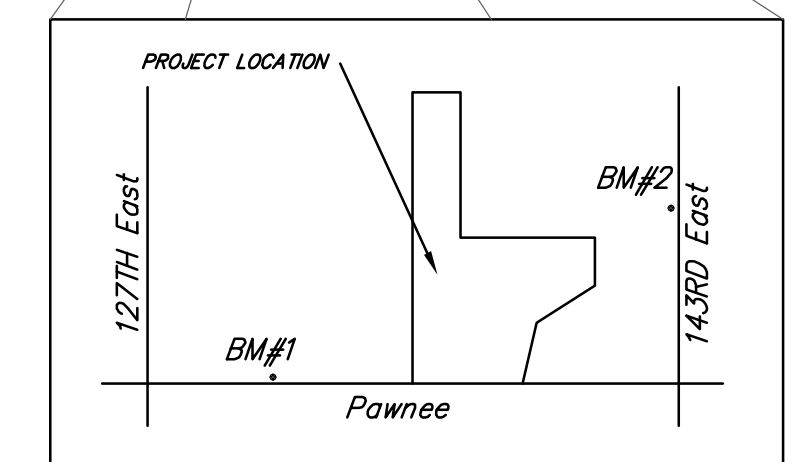


EARTHWORK SUMMARY

CUT = 66,150 Cu.Yd.
FILL = 58,420 Cu.Yd.
NET = 7,730 Cu.Yd. CUT
Compacted Fill (90%) = 20,000 Cu.Yd.

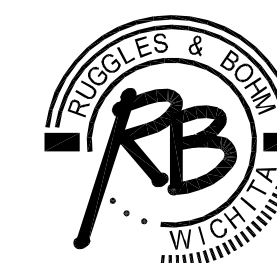


VICINITY MAP



IMPROVEMENT DISTRICT

CITY OF WICHITA, KANSAS
GARY JANZEN, P.E. - INTERIM CITY ENGINEER



Ruggles & Bohm, P.A.
Engineering, Surveying, Land Planning

924 North Main (316) 264-8008
Wichita, Kansas 67203 (316) 264-4621 fax
www.rbkansas.com E-mail: info@rbkansas.com