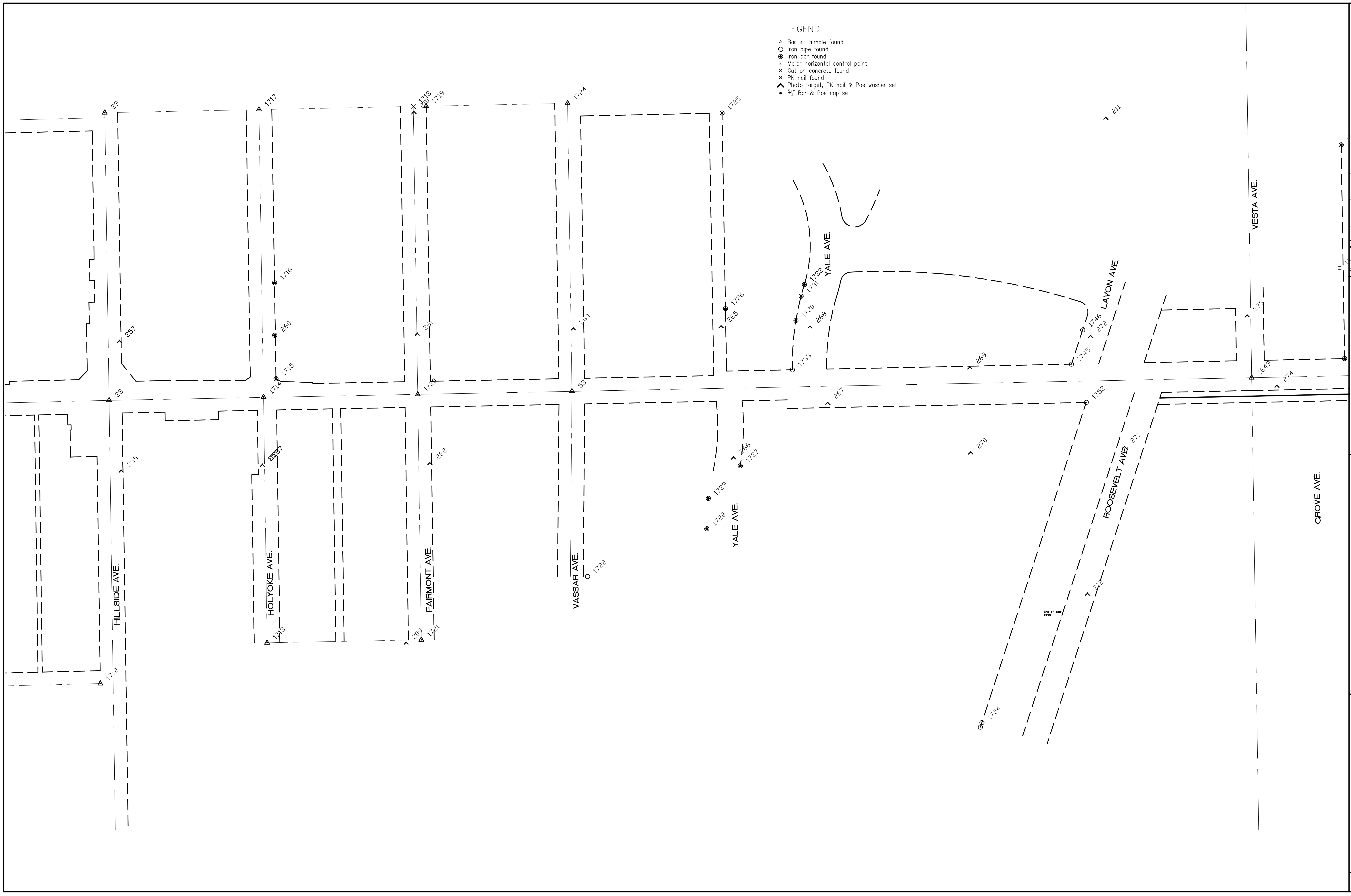


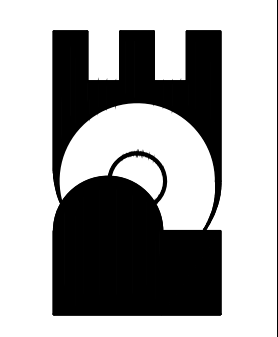
- LEGEND**
- ▲ Bar in thimble found
  - Iron pipe found
  - Iron bar found
  - ⊠ Major horizontal control point
  - ✕ Cut on concrete found
  - PK nail found
  - ▲ Photo target, PK nail & Poe washer set
  - 3/8" Bar & Poe cap set



No.	Date	By	Approved	Revision
1				
2				
3				

13TH STREET NORTH FROM KANSAS TO OLIVER  
 STREET & DRAINAGE IMPROVEMENTS  
 Survey Data Sheet  
**CITY OF WICHITA, KANSAS**

**POE & ASSOCIATES, INC.**  
**CONSULTING ENGINEERS**  
 5940 E. Central, Suite 200 • Wichita, KS 67208-4242  
 Phone: 316/685-4114 • FAX: 316/685-4444



**FINAL**

Engineer: P. FERGUSON  
 Designer: P. FERGUSON  
 CITY Job No.: 472-84320    Poe Job No.: 1871  
 Date: March, 2012