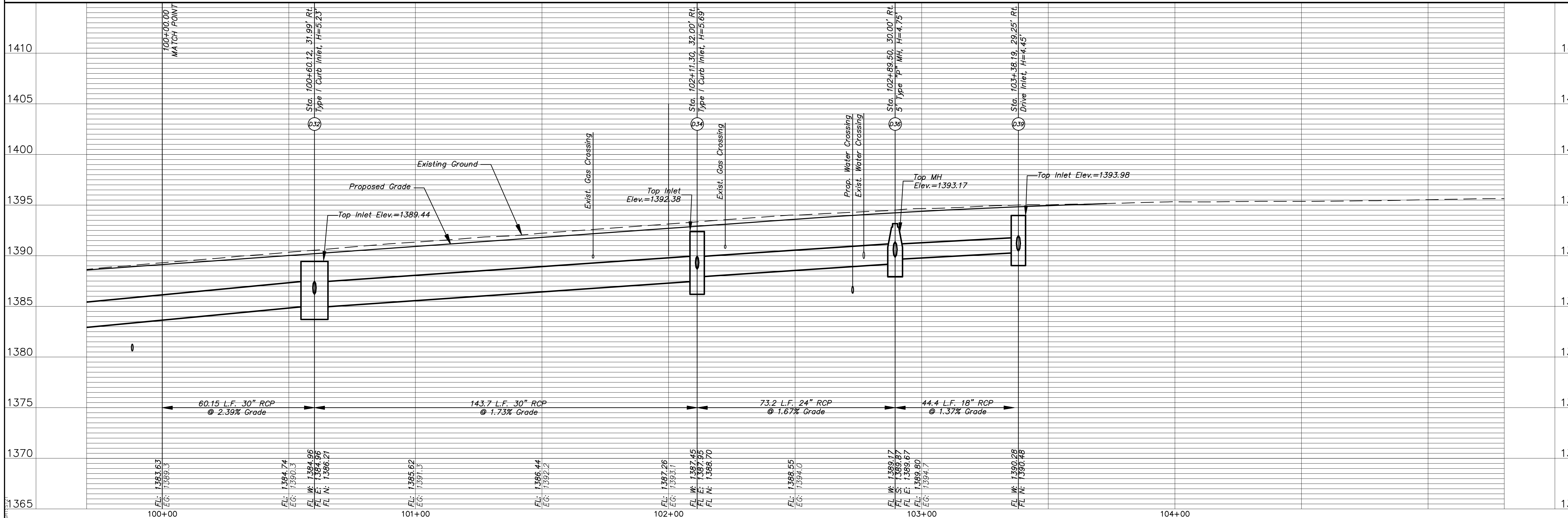
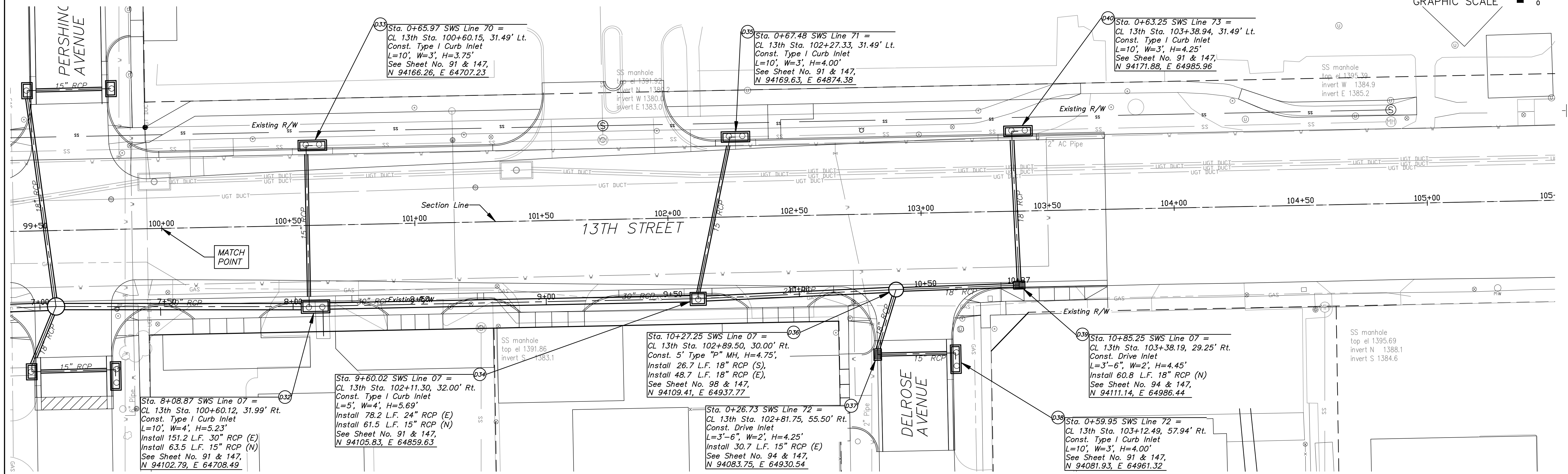
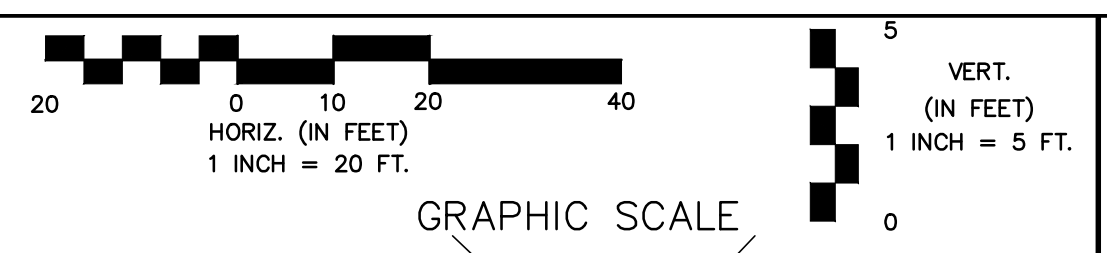


1 Connect SWS to Proposed RCB/RCP as Shown in Profile

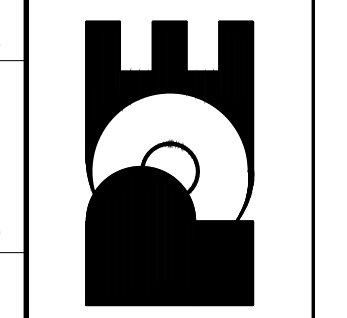
Existing Structure to be Removed by Others



13TH STREET NORTH FROM HYDRAULIC TO OLIVER STREET & DRAINAGE IMPROVEMENTS STORM SEWER PLAN & PROFILE CITY OF WICHITA, KANSAS

JAMES L. ARMOUR, P.E., L.S. - CITY ENGINEER  
C.O.W. Proj.# 472-84320 O.C.A.# 708933

POE & ASSOCIATES, INC.  
CONSULTING ENGINEERS  
5940 E. Central, Suite 200 Wichita, KS 67208-4242  
Phone 316/685-4111 FAX 316/685-4444



DESIGNED BY: J. DICKMAN  
DRAWN BY: M. TUCKER  
POE JOB NO.: 1871A  
DATE: March 2012

Sheet 121 of 374