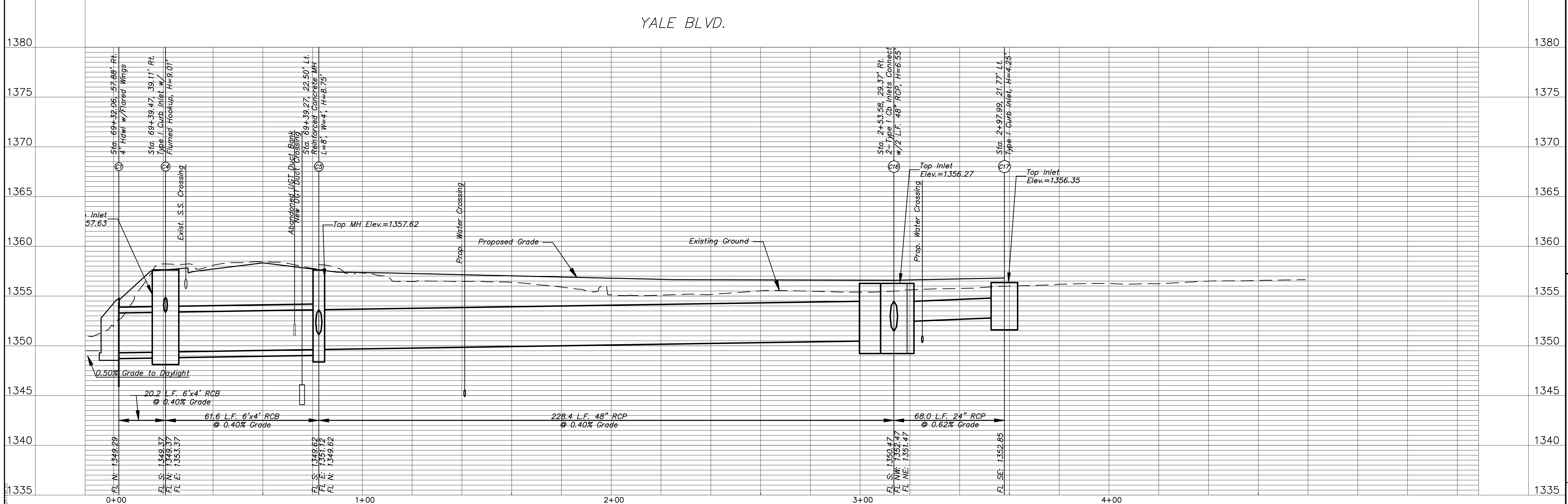
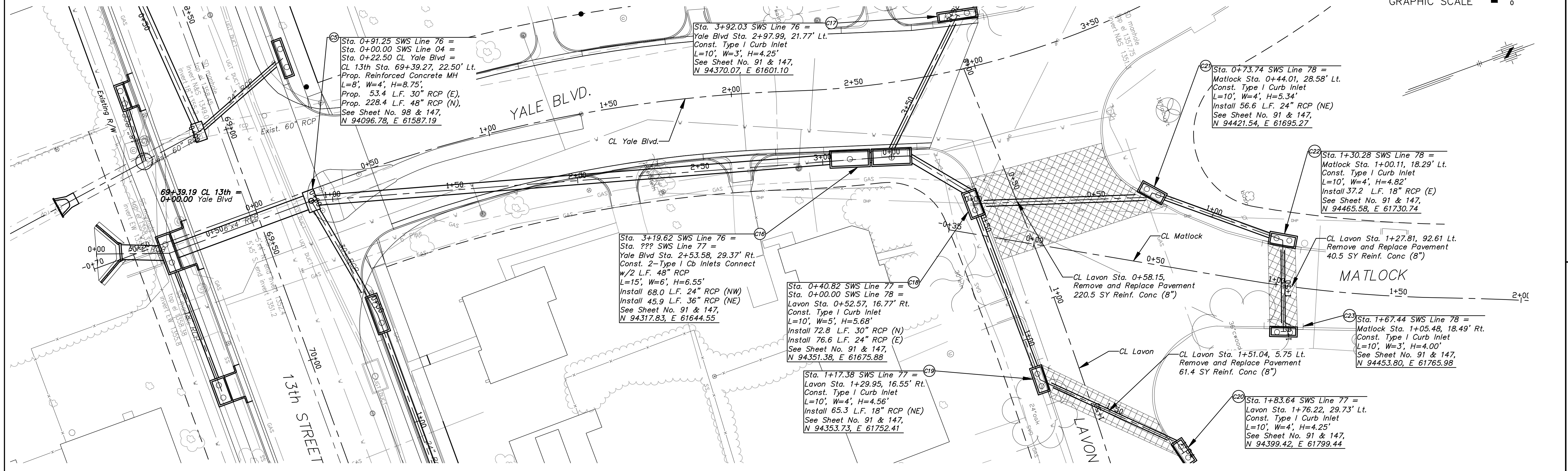
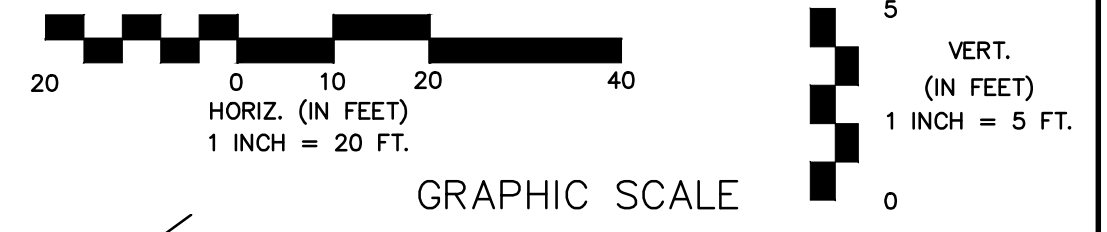
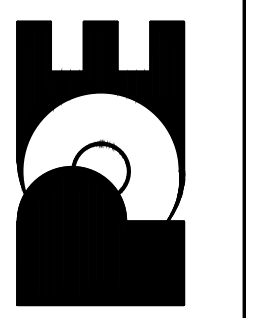


1 Connect SWS to Proposed RCB/RCP as Shown in Profile Existing Structure to be Removed by Others



13TH STREET NORTH FROM HYDRAULIC TO OLIVER STREET & DRAINAGE IMPROVEMENTS STORM SEWER PLAN & PROFILE CITY OF WICHITA, KANSAS JAMES L. ARMOUR, P.E., L.S. - CITY ENGINEER C.O.W. Proj.# 472-84320 O.C.A.# 708933

POE & ASSOCIATES, INC. CONSULTING ENGINEERS 5940 E. Central, Suite 200 Wichita, KS 67208-4242 Phone 316/635-4111 Fax 316/635-4444



DESIGNED BY: J. DICKMAN
DRAWN BY: M. TUCKER
JOB NO.: 1871A
DATE: March 2012