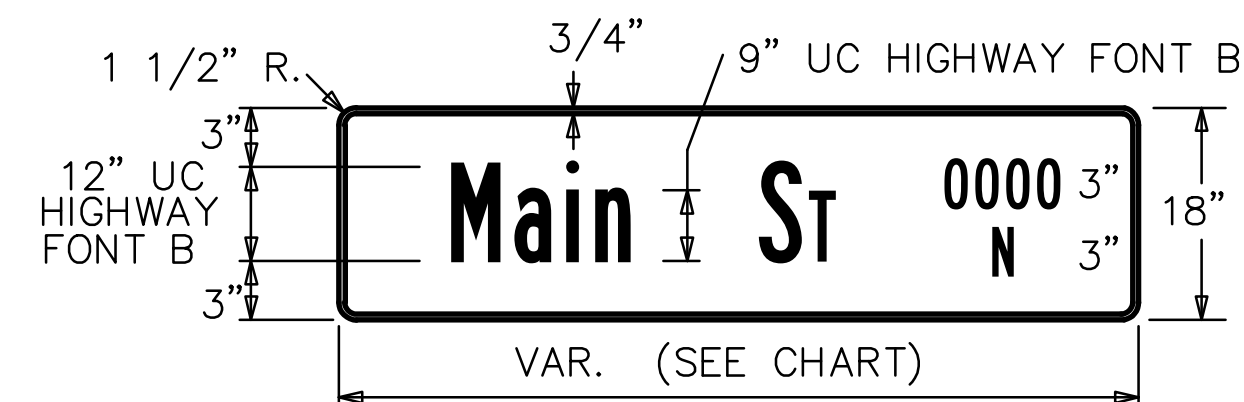


- ≡ #8AWG Equipment Ground (Green)
 - ⊙ Power Supply
 - V3 Video Power Cable
 - CX Video Coax Cable
 - △ Signal Pole Reference Number
- All splices to be in pole base, no splices permitted within service box.

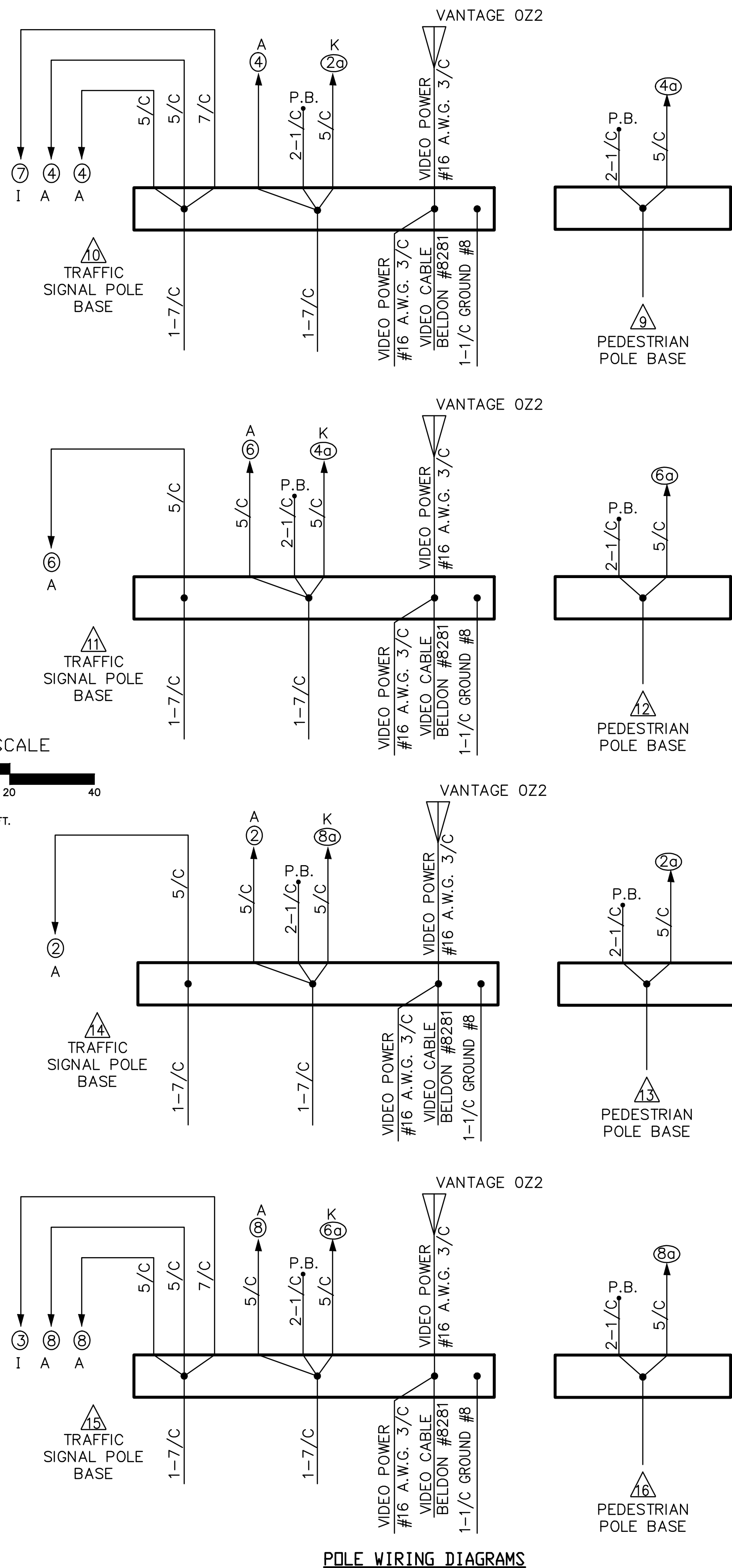
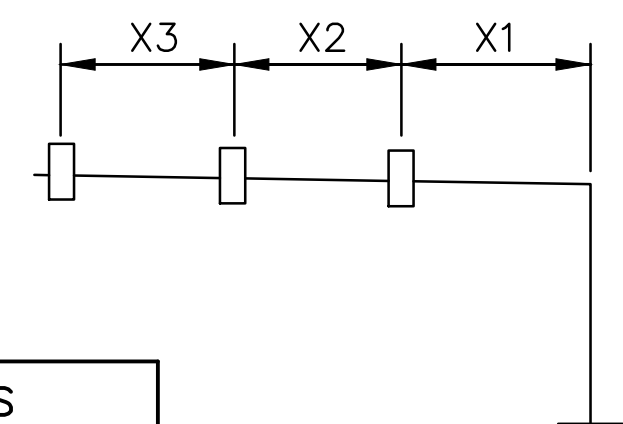


TRAFFIC SIGNAL POLE SUMMARY											
POLE NO	TYPE	ARM LENGTH (FT.)	NO. OF SIGNALS ON ARM	BRACKET TYPE	X1 (FT.)	X2 (FT.)	X3 (FT.)	NO. OF SIGNALS ON POLE	BRACKET TYPE	NO. OF PUSH BUTTONS ON POLE	REMARKS
9	A	---	---	---	---	---	---	1	III	1	
10	B	37	3	I	16	11	8	2	II & III	1	
11	B	23	1	I	21	---	---	2	II & III	1	
12	A	---	---	---	---	---	---	1	III	1	
13	A	---	---	---	---	---	---	1	III	1	
14	B	28	1	I	26	---	---	2	II & III	1	
15	B	38	3	I	17	11	8	2	II & III	1	
16	A	---	---	---	---	---	---	1	III	1	

- ① A-15' Pedestal (Alum.)
- B-20' Steel with Mast Arm(s)
- C-35' Steel (Joint Use) with Mast Arm(s)
- D-40' Steel with Mast Arm

SUMMARY OF TRAFFIC SIGNAL HEADS		
NUMBER	TYPE	QUANTITY
1	-	-
2	A	2
2a	K	2
3	I	1
4	A	3
4a	K	2
5	-	-
6	A	2
6a	K	2
7	I	1
8	A	3
8a	K	2
TOTAL		20

OVERHEAD STREET NAME SIGNS			
LEGEND	LENGTH	QUANTITY	
13th St	3700 E	5'-0"	1
13th St	3900 E	5'-0"	1
Lavon	1400 N	5'-0"	1
Roosevelt	1300 N	5'-0"	1



RECAPITULATION OF TRAFFIC SIGNAL QUANTITIES		
ITEM	UNIT	QUANTITY
TRAFFIC SIGNAL INSTALLATION (13th St. & Lavon/Roosevelt)	LUMP SUM	LUMP SUM
	1	1

QUANTITIES FOR INFORMATION ONLY

The traffic signal system shall be complete and the contractor shall furnish and install all equipment and materials necessary for the satisfactory operation of electrical apparatus and for the complete operation of the traffic signal system whether specifically mentioned or not.

NOTE: City of Wichita will provide controller; conflict monitor.

Top Coat Finish for Traffic Signal Poles & Controller Cabinet
 All visually exposed exterior surfaces shall be coated with a urethane or triglycidyl isocyanurate (TGIC) polyester powder to a minimum dry film thickness (DFT) of 2.0 mils. Prior to application of the top coat, the surface shall be mechanically etched and pre-heated to 450 degrees F for a minimum of one hour. The coating shall be electro-statically applied and cured at a minimum temperature of 400 degrees F. The finished color for the poles shall be black.

Special Finish for Traffic Signal Equipment
 The traffic signal, mounting brackets, signal head backs, sign backs, meter box, disconnect box, and miscellaneous hardware shall be shop painted with an aerosol lacquer cellulose ester to match the traffic signal pole color. The Contractor shall submit two copies of the proposed coating system to the Engineer for approval prior to application. In addition to the requirements stipulated in the Standard Specifications, banding material shall be coated with ethylene-vinyl-alcohol (EVA) copolymer. The color shall be black.

**13TH STREET/LAVON-ROOSEVELT INTERSECTION
 BILL OF MATERIALS (FOR INFORMATION ONLY)**

ITEM	QUANT.	UNIT
PAD MOUNTED CABINET	1	EACH
CONTROLLER 2070	CITY	EACH
CONFLICT MONITOR	CITY	EACH
SURGE ARRESTOR - A.C. SERVICE	-	EACH
POLE MOUNTED CABINET	-	EACH
TRAFFIC SIGNAL HEAD	20	EACH
SIGNAL HEAD MOUNTING BRACKET	20	EACH
BACK PLATE 5" 3 SECTION	6	EACH
BACK PLATE 5" 5 SECTION	2	EACH
PED. INDIC. LED (16"x18" COMB. W/ COUNTDOWN)	8	EACH
L.E.D. TRAFFIC SIGNAL LENS	40	EACH
PEDESTRIAN PUSHBUTTON & SIGN	8	EACH
TRAFFIC SIGNAL POLE (20')	4	EACH
TRAFFIC SIGNAL PEDESTAL	4	EACH
TERMINAL BLOCK	8	EACH
SERVICE BOX	4	EACH
CIRCUIT BREAKER, TRAFFIC SIGNAL	1	EACH
GROUND ROD & CLAMP	9	EACH
SERVICE WIRE NO. 6 AWG 1/C	-	LIN FT
GROUND WIRE NO. 8 AWG 1/C	410	LIN FT
MULTI-CONDUCTOR CABLE NO. 14 AWG 1/C	80	LIN FT
MULTI-CONDUCTOR CABLE NO. 14 AWG 5/C	430	LIN FT
MULTI-CONDUCTOR CABLE NO. 14 AWG 7/C	1,600	LIN FT
CONDUIT ELBOW 90° 3"	AS REQ'D	EACH
CONDUIT 3" RGC	520	LIN FT
CONDUIT 2" RGC	-	LIN FT
CONCRETE FOOTING - TRAFFIC SIGNAL POLE	4	EACH
CONCRETE FOOTING - PEDESTRIAN PEDESTAL	4	EACH
CONCRETE CONTROLLER PAD	1	EACH
VIDEO DETECTION UNIT (VANTAGE EDGE MODULE OR APPROVED EQUAL)	4	EACH
VID. DET. CAM. (VANTAGE OZ2), MOUNTING HARDWARE (OR APPROVED EQUAL)	4	EACH
VIDEO CABLE 75 OHM COAXIAL (BELDON #8281 OR APPROVED EQUAL)	540	LIN FT
VIDEO POWER CABLE #16 A.W.G. 3/C	540	LIN FT
OVERHEAD STREET NAME SIGN	4	EACH
R10-10 SIGN (24" X 30")	-	EACH
R10-12 SIGN (24" X 30")	2	EACH

QUANTITIES FOR INFORMATION ONLY

The traffic signal system shall be complete and the contractor shall furnish and install all equipment and materials necessary for the satisfactory operation of electrical apparatus and for the complete operation of the traffic signal system whether specifically mentioned or not.

13TH STREET NORTH FROM KANSAS TO OLIVER
 CITY OF WICHITA, KANSAS
 TRAFFIC SIGNAL WIRING PLAN
 13TH STREET NORTH & LAVON/ROOSEVELT STREET
 POE & ASSOCIATES, INC.
 CONSULTING ENGINEERS
 5940 E. Central, Suite 200 • Wichita, KS 67208-0242
 Phone 316/685-4114 • FAX 316/685-4444
 Engineer: P. FERGUSON
 Designer: P. FERGUSON
 CITY Job No.: 472-84320
 Date: March, 2012
 Sheet 169 of 374