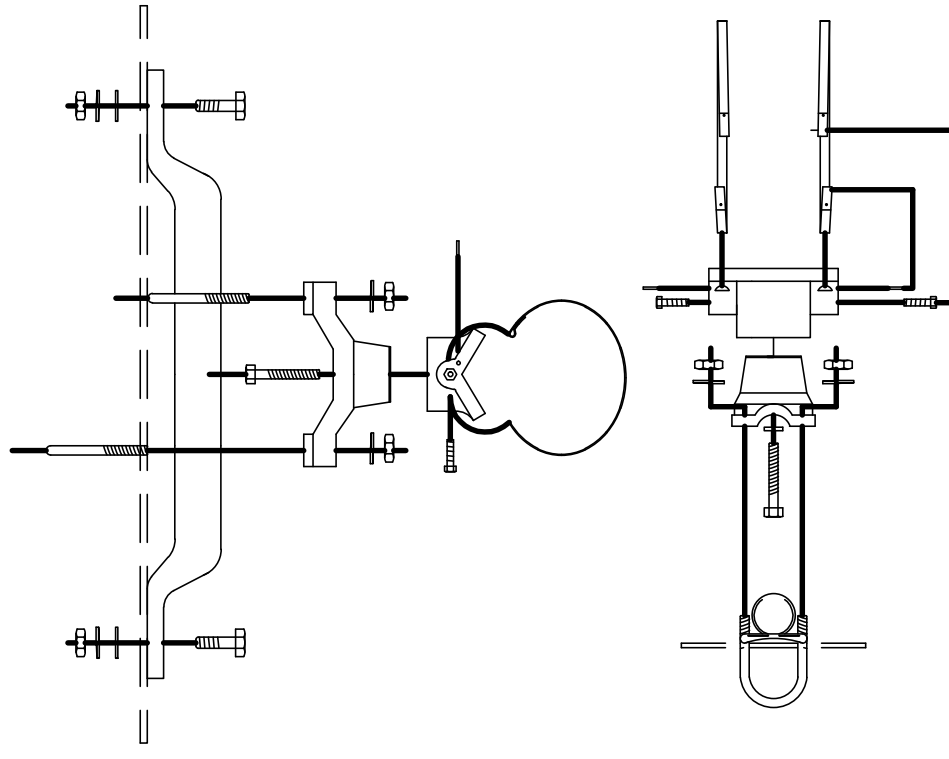
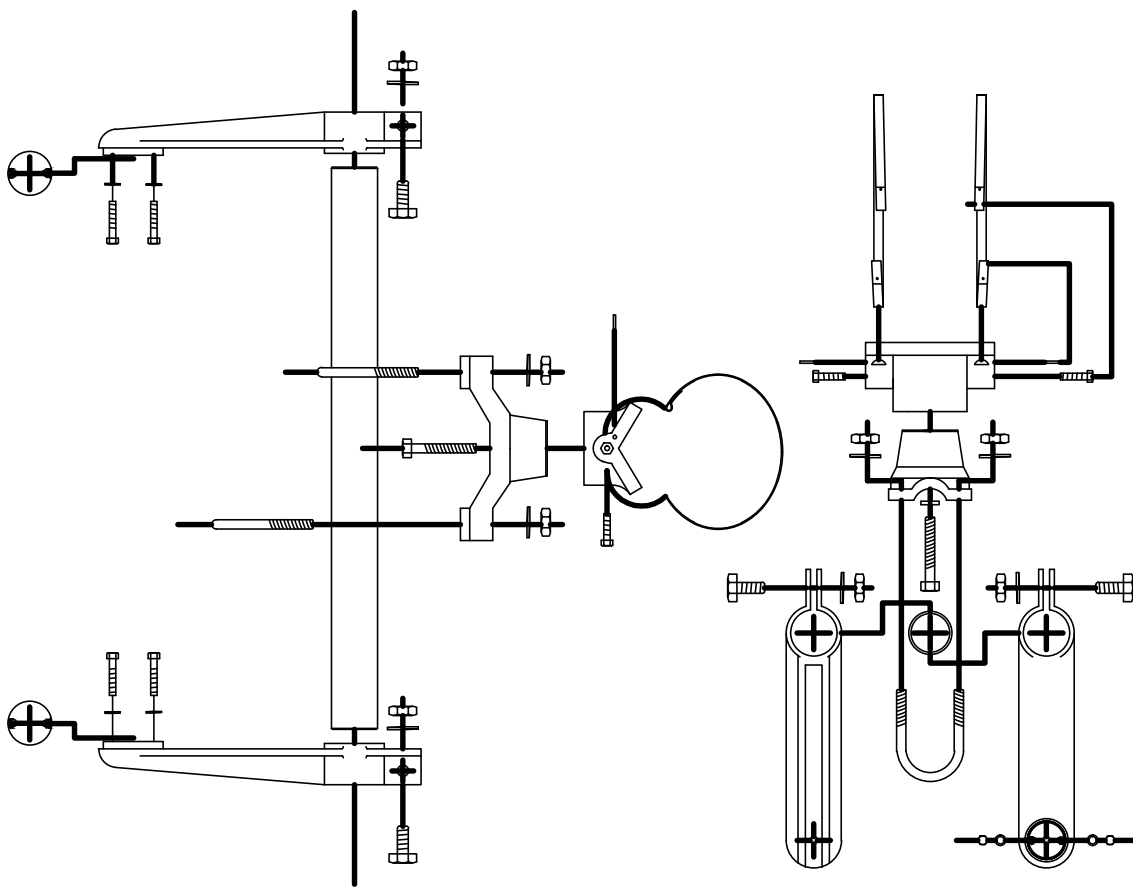


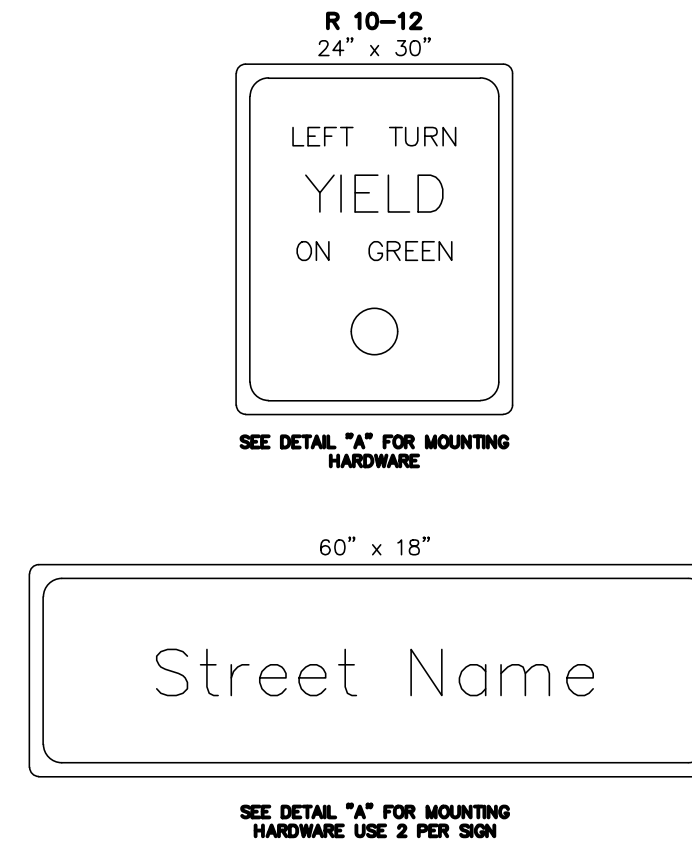
BANDED SIGN MOUNTING BRACKET DETAIL



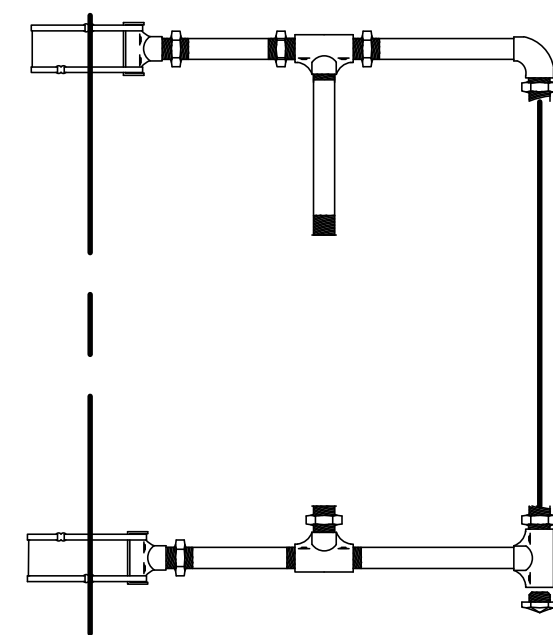
TYPE I SIGNAL MOUNTING BRACKET ASSEMBLY DETAIL



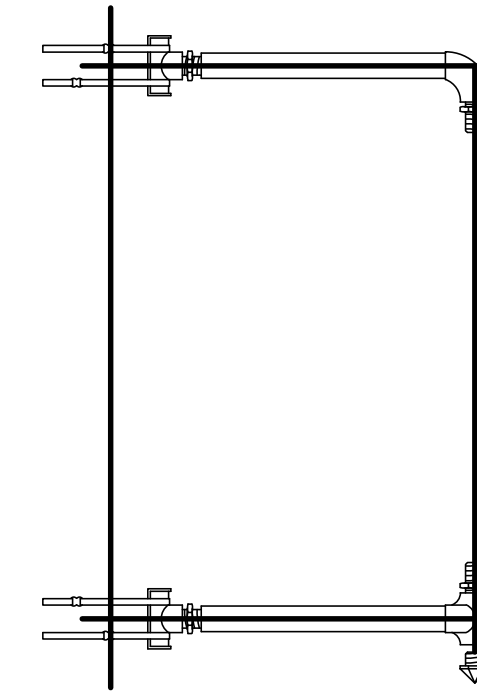
STANDARD SIGNING



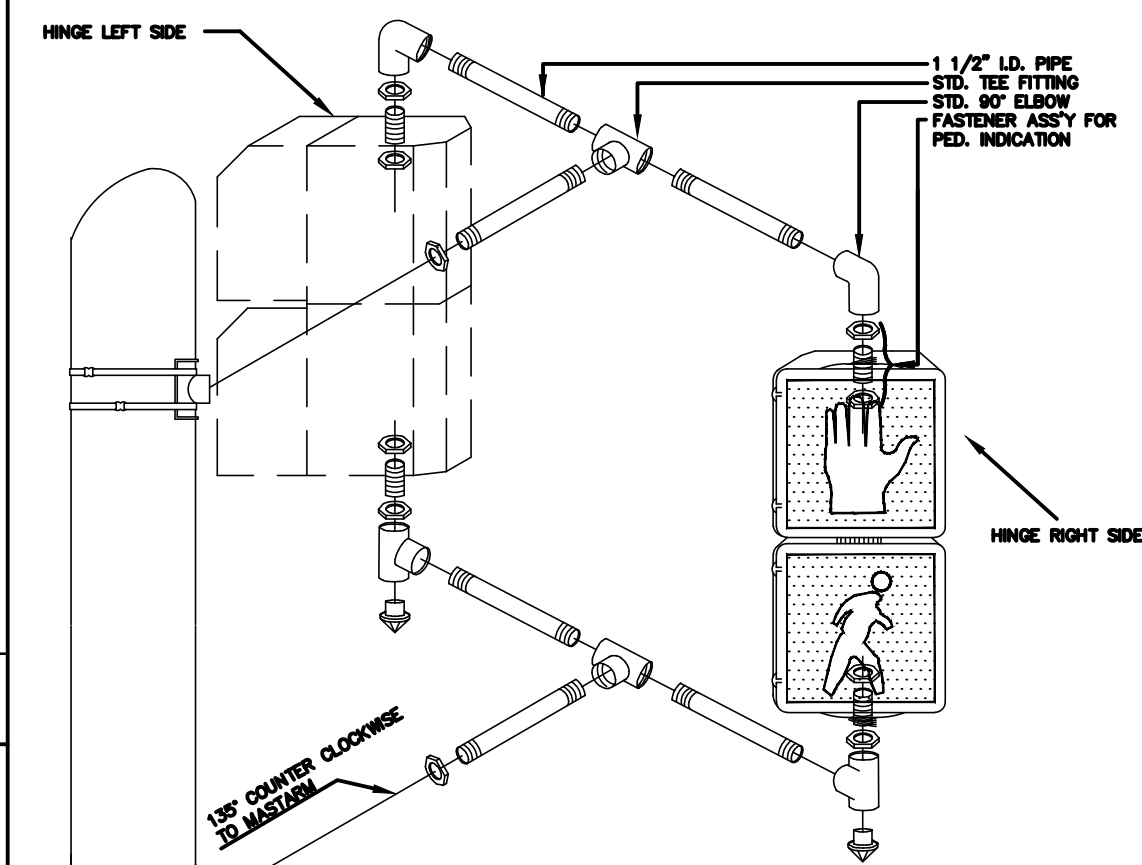
TYPE IV, 2-WAY, SIDE-OF-POLE MOUNTING BRACKET ASSEMBLY



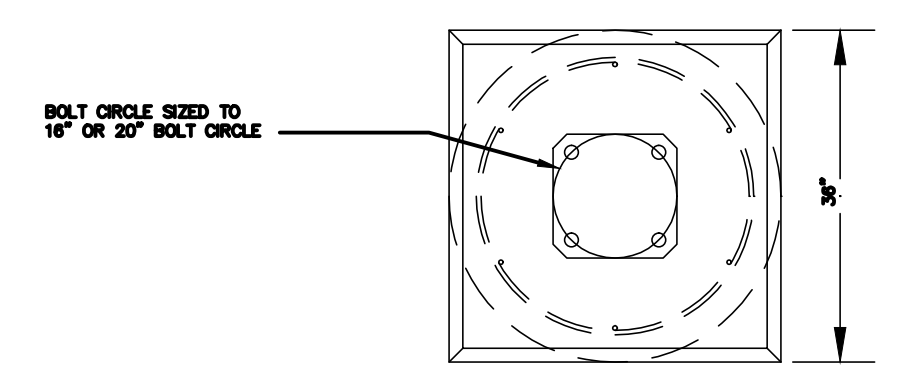
TYPE III SIDE-OF-POLE MOUNTING BRACKET ASSEMBLY



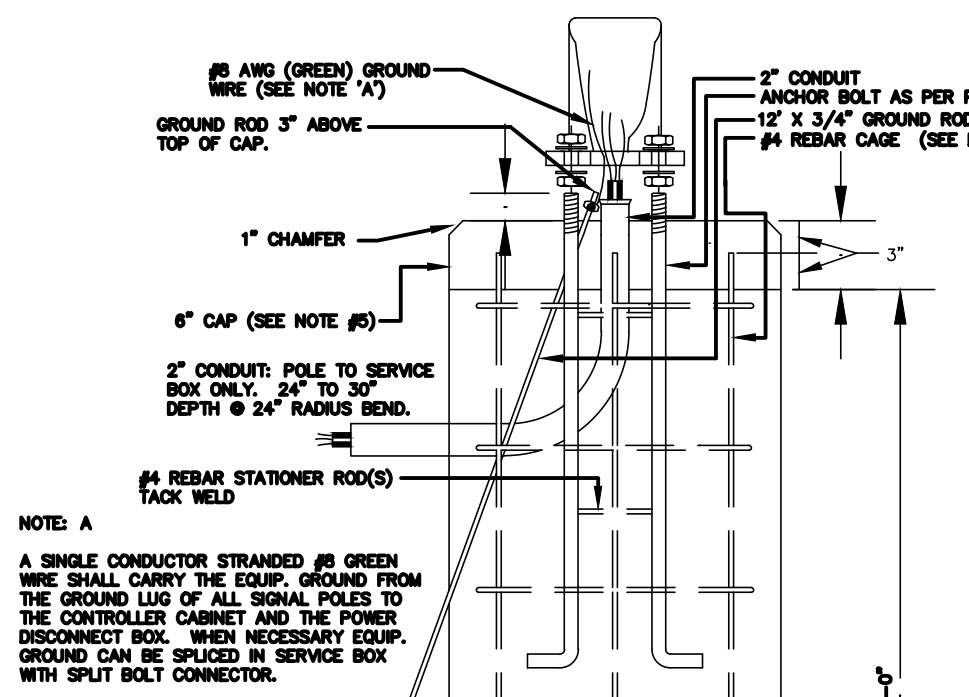
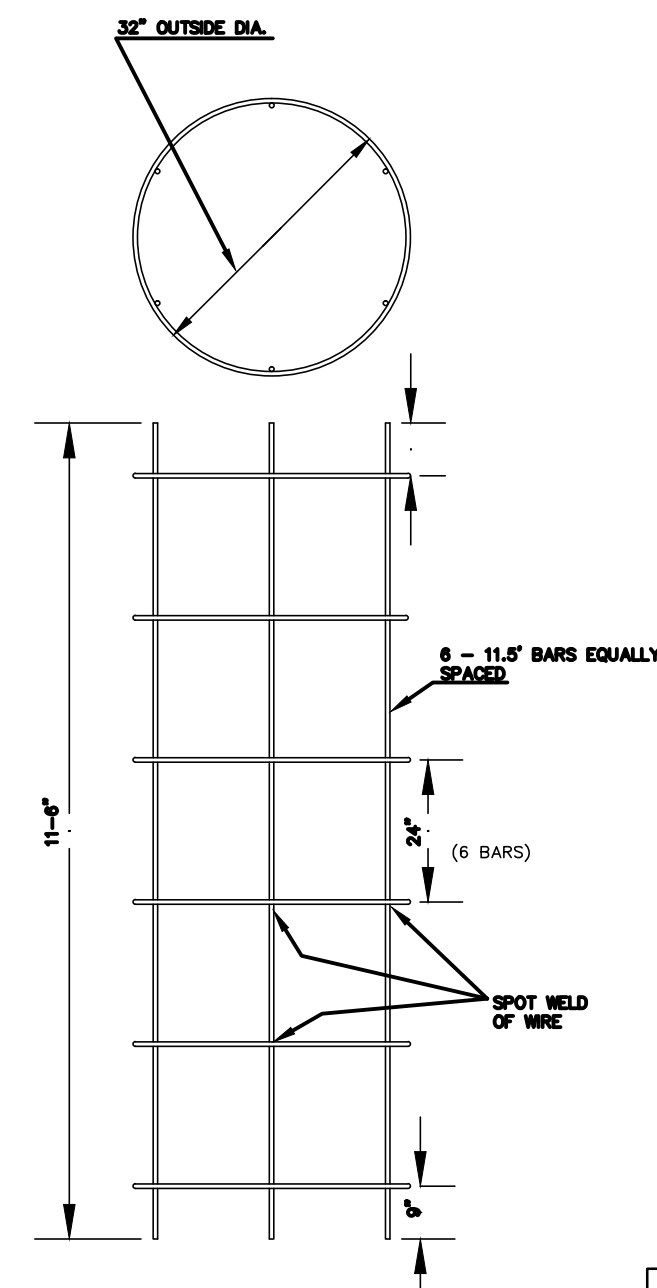
TYPE II SIGNAL MOUNTING BRACKET ASSEMBLY (SIDE-OF-POLE)



1. DIRECTIONAL ALIGNMENT OF PED. INDICATIONS & BRACKET(S) SHALL BE DETERMINED IN THE FIELD BY THE ENGINEER.
2. THROUGH HOLES IN THE POLE SHALL BE DRILLED AND WELL REAMED TO PREVENT CABLE CHAFING.
3. HINGE PEDESTRIAN SIGNAL DOORS AWAY FROM POLE.



REBAR CAGE



NOTE A
A SINGLE CONDUCTOR STRANDED #6 GREEN WIRE SHALL CARRY THE EQUIV. GROUND FROM THE GROUND LUG OF ALL SIGNAL POLES TO THE CONTROLLER CABINET AND THE POWER DISCONNECT BOX. WHEN NECESSARY EQUIV. GROUND CAN BE SUPPLIED IN SERVICE BOX WITH SPLIT BOLT CONNECTOR.

- NOTE:
1. THE ANCHOR BOLTS FOR THE SIGNAL POLE SHALL BE TACK WELDED TOGETHER IN A 16" OR 20" DIA. BOLT PATTERN (ON CENTERS AS SHOWN) TO MAINTAIN REQUIRED BOLT CONFIGURATION PATTERN AND TO AID IN VERTICAL POSITIONING WHILE CONCRETE BASE IS POURED.
 2. USE ANTI-SEIZE COMPOUND ON ALL THREADS.
 3. 12" x 3/4" GROUND ROD TO BE POSITIONED BEFORE POURING BASE.
 4. CLASS "1" CONCRETE SHALL BE USED TO CONSTRUCT BASE.
 5. CONSTRUCT A 1" THICK x 36" SQUARE CONCRETE CAP AFTER POLE HAS BEEN ERECTED & PLUMBED. CHAMFER EDGE 1". MUST BE APPROVED BY ENG. BEFORE POURING.
 6. CONDUIT SHALL HAVE PLASTIC (OR METAL) BUSHING (ABOVE BASE) TO PREVENT CABLE CHAFING.
 7. USE #6 BARE COPPER GROUND CONDUCTOR FROM CLAMP TO GROUND BOLT IN ACCESS HOLE.

PROJECT DESCRIPTION			
STEEL SIGNAL POLE ASSEMBLY DETAILS			
PROJECT NUMBER			
DRAWN BY: T.M.	APPROVED BY:	REVISED BY: LRB	
DATE: FEB. 98		DATE: MAR 2004	
CITY OF WICHITA DEPARTMENT OF PUBLIC WORKS			
ENGINEERING DIVISION PAUL GUNZELMAN, TRAFFIC ENGINEER		SCALE NO SCALE	

13TH STREET NORTH FROM KANSAS TO OLIVER

CITY OF WICHITA, KANSAS
STEEL SIGNAL POLE ASSEMBLY DETAILS

POE & ASSOCIATES, INC.
CONSULTING ENGINEERS
5940 E. Central, Suite 200 • Wichita, KS 67208-0242
Phone 316/685-4114 • FAX 316/685-4444

Engineer: P. FERGUSON
Designer: P. FERGUSON
CITY Job No.: 472-84320
Date: March, 2012

Sheet 173 of 374