

Unless otherwise noted elevations shown are to top of pipe.

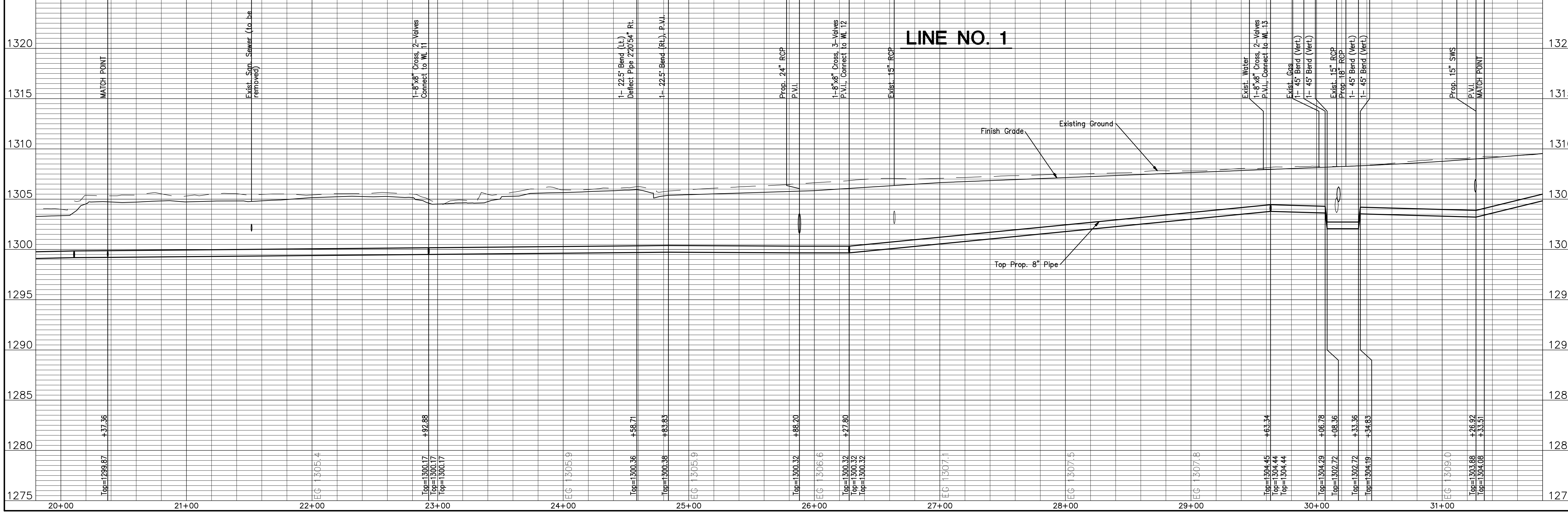
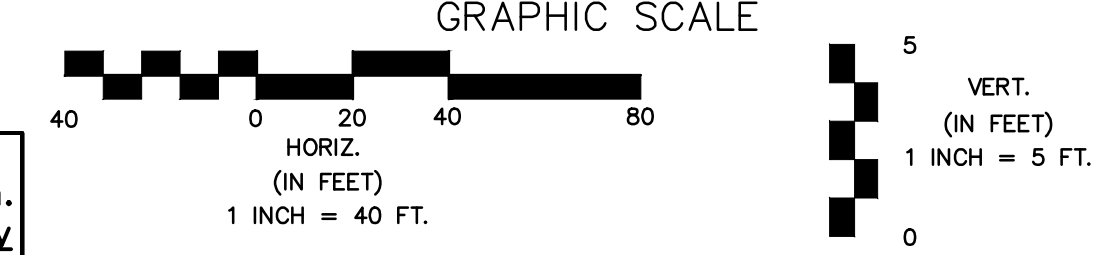
Line #	Station	Approximate Length
1	21+09.26	69 LF (Long)
1	21+77.10	2 LF (Short)
1	22+64.01	2 LF (Short)
1	24+01.65	69 LF (Long)
1	24+92.70	7 LF (Short)

Line #	Station	Approximate Length
1	25+16.70	58 LF (Long)
1	25+24.96	7 LF (Short)
1	26+97.13	65 LF (Long)
1	27+21.53	65 LF (Long)
1	27+54.02	65 LF (Long)

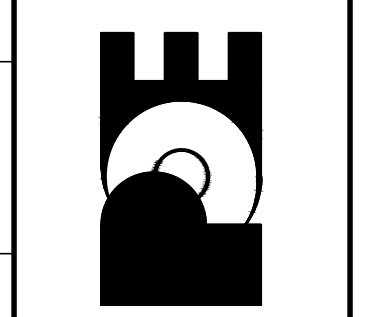
Line #	Station	Approximate Length
1	28+39.94	65 LF (Long)
1	29+02.61	9 LF (Short)
1	30+36.18	7 LF (Short)
1	30+99.70	65 LF (Long)
1	31+17.42	7 LF (Short)

**LEGEND:**

- Tree Removal
- Existing Building to be Removed by Others
- Water Main to be Removed or Abandon in Place
- Remove Trees Only as Needed for Construction. Cost Shall be Subsidiary to Site Clearing.



**POE & ASSOCIATES, INC.**  
 CONSULTING ENGINEERS  
 5940 E. Central, Suite 200 Wichita, KS 67208-4242  
 Phone 316/685-4114 FAX 316/685-4444



**FINAL**

Engineer: J. DICKMAN  
 Designer: M. TUCKER  
 P.O. Job No.: 1871  
 Date: MARCH 2012

Sheet  
 340 of 374