

**NOTES:**  
 1. Contractor to Field Verify location and Depth of All Utilities Prior to Construction and Report Findings to Project Engineer.

Unless otherwise noted elevations shown are to top of pipe.

Line #	Station	Approximate Length
1	31+72.25	65 LF (Long)
1	31+81.25	7 LF (Short)
1	32+21.58	7 LF (Short)
1	32+29.25	66 LF (Long)
1	33+78.47	81 LF (Long)

Line #	Station	Approximate Length
1	33+95.46	82 LF (Long)
1	34+43.99	6 LF (Short)
1	34+46.99	6 LF (Short)
1	34+79.75	88 LF (Long)
1	35+25.13	72 LF (Long)

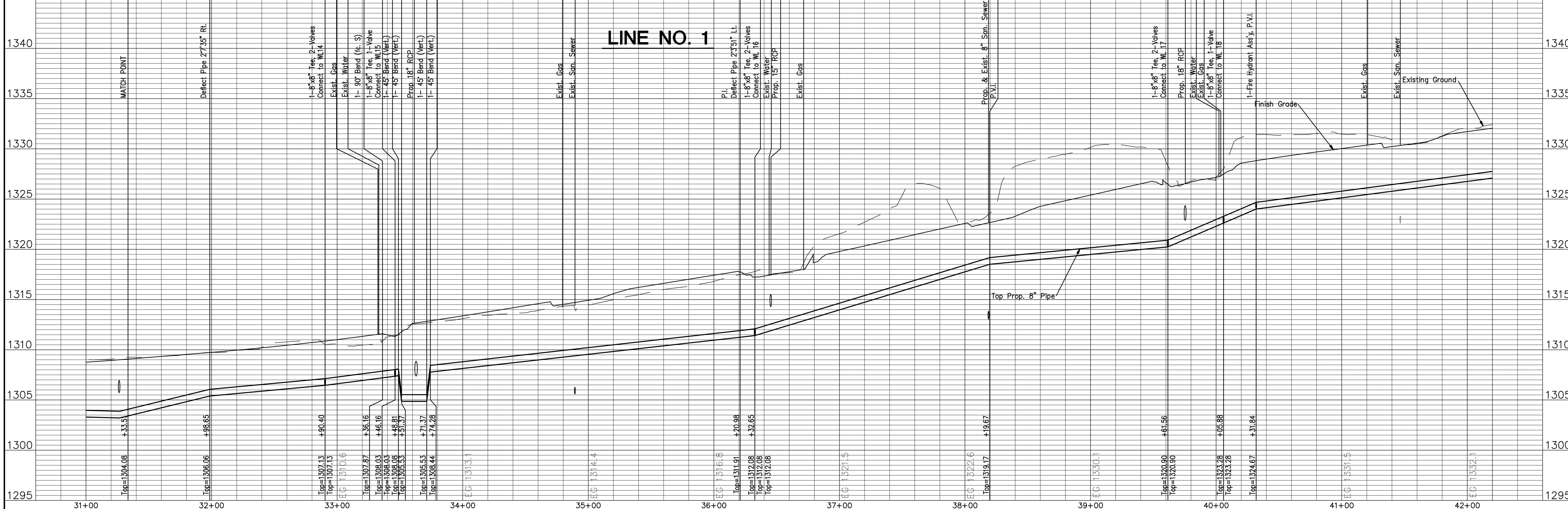
Line #	Station	Approximate Length
1	35+91.58	74 LF (Long)
1	37+87.91	2 LF (Short)
1	38+05.98	70 LF (Long)
1	38+27.95	70 LF (Long)
1	38+29.91	2 LF (Short)

Line #	Station	Approximate Length
1	39+06.18	70 LF (Long)
1	39+11.24	70 LF (Long)
1	40+84.93	70 LF (Long)
1	40+97.76	2 LF (Short)
1	41+74.71	2 LF (Short)
1	42+13.14	70 LF (Long)

**LEGEND:**

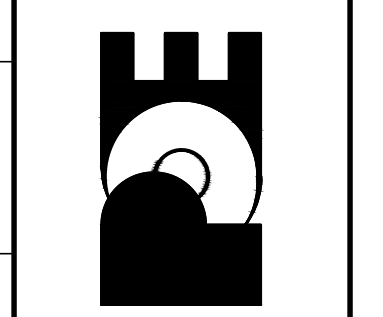
- Tree Removal
- Existing Building to be Removed by Others
- Water Main to be Removed or Abandon in Place
- Remove Trees Only as Needed for Construction. Cost Shall be Subsidiary to Site Clearing.

GRAPHIC SCALE



13th STREET NORTH FROM KANSAS TO OLIVER  
 WATER SUPPLY IMPROVEMENTS  
 WATER PLAN & PROFILE  
**CITY OF WICHITA, KANSAS**  
 JAMES L. ARNDORFER, P.E. - CITY ENGINEER  
 C.O.W. Proj. # 448-90551

**POE & ASSOCIATES, INC.**  
 CONSULTING ENGINEERS  
 5940 E. Central, Suite 200 Wichita, KS 67208-4242  
 Phone 316/685-4114 FAX 316/685-4444



**FINAL**  
 Engineer: J. DICKMAN  
 Designer: M. TUCKER  
 P.O. Job No.: 1871  
 Date: MARCH 2012  
 Sheet 341 of 374