

Unless otherwise noted elevations shown are to top of pipe.

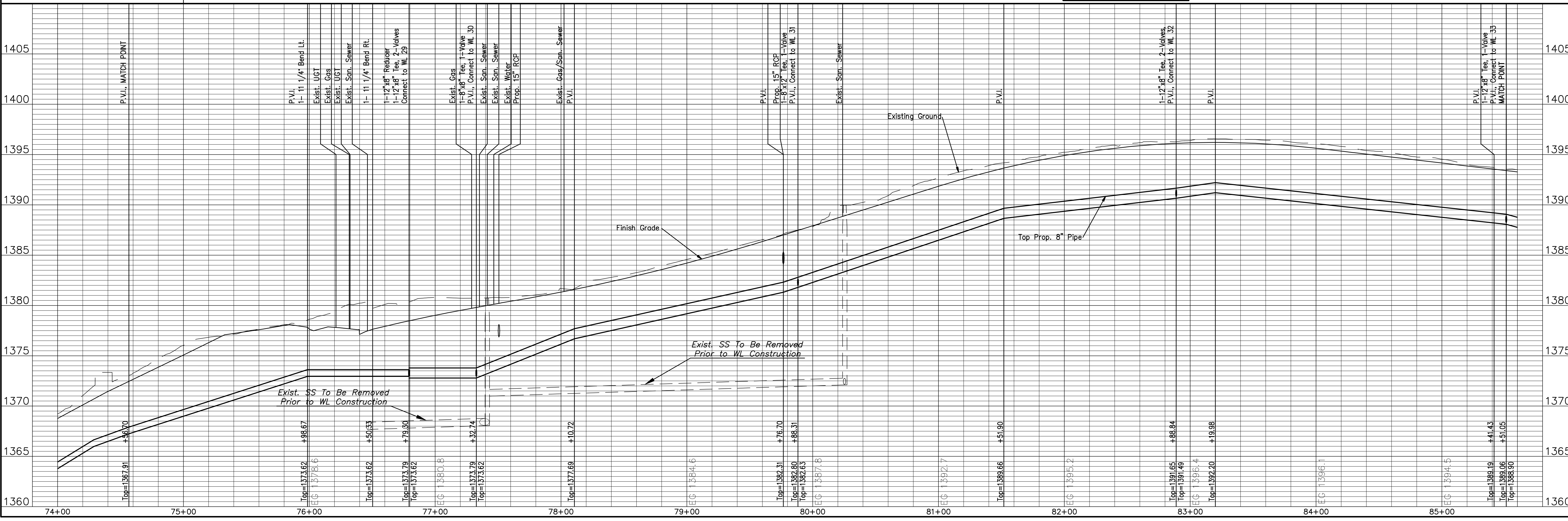
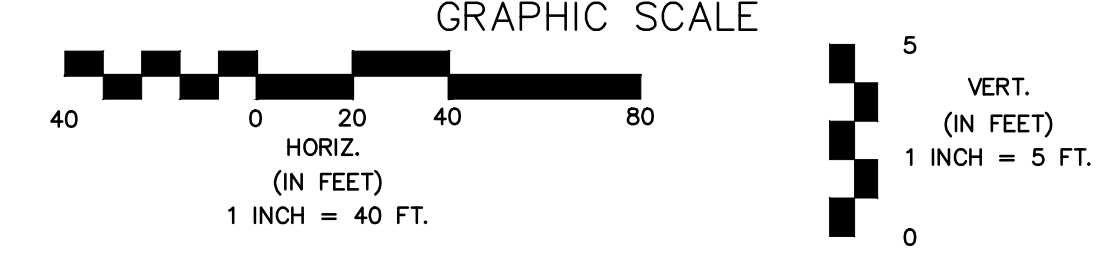
Line #	Station	Approximate Length
1	75+02.25	82 LF (Long)
1	75+05.25	82 LF (Long)
1	75+49.32	82 LF (Long)
1	78+16.92	57 LF (Long)
1	78+19.92	57 LF (Long)

Line #	Station	Approximate Length
1	80+91.47	56 LF (Long)
1	81+38.37	56 LF (Long)
1	81+41.37	56 LF (Long)
1	81+57.92	56 LF (Long)
1	81+60.92	56 LF (Long)

LINE NO. 1

LEGEND:

- Tree Removal
- Existing Building to be Removed by Others
- Water Main to be Removed or Abandon in Place
- Remove Trees Only as Needed for Construction. Cost Shall be Subsidiary to Site Clearing.



No.	Date	By	Approved	Revision

13th STREET NORTH FROM KANSAS TO OLIVER
 WATER SUPPLY IMPROVEMENTS
 WATER PLAN & PROFILE
CITY OF WICHITA, KANSAS
 JAMES L. ARNDOR, P.E. - CITY ENGINEER
 C.O.W. Proj. # 448-90551

POE & ASSOCIATES, INC.
 CONSULTING ENGINEERS
 5940 E. Central, Suite 200 Wichita, KS 67208-4242
 Phone 316/685-4114 FAX 316/685-4444

FINAL

Engineer: J. DICKMAN
 Designer: M. TUCKER
 P.O. Job No.: 1871
 Date: MARCH 2012

Sheet
 345 of 374