

NOTES:
 1. Contractor to Field Verify location and Depth of All Utilities Prior to Construction and Report Findings to Project Engineer.

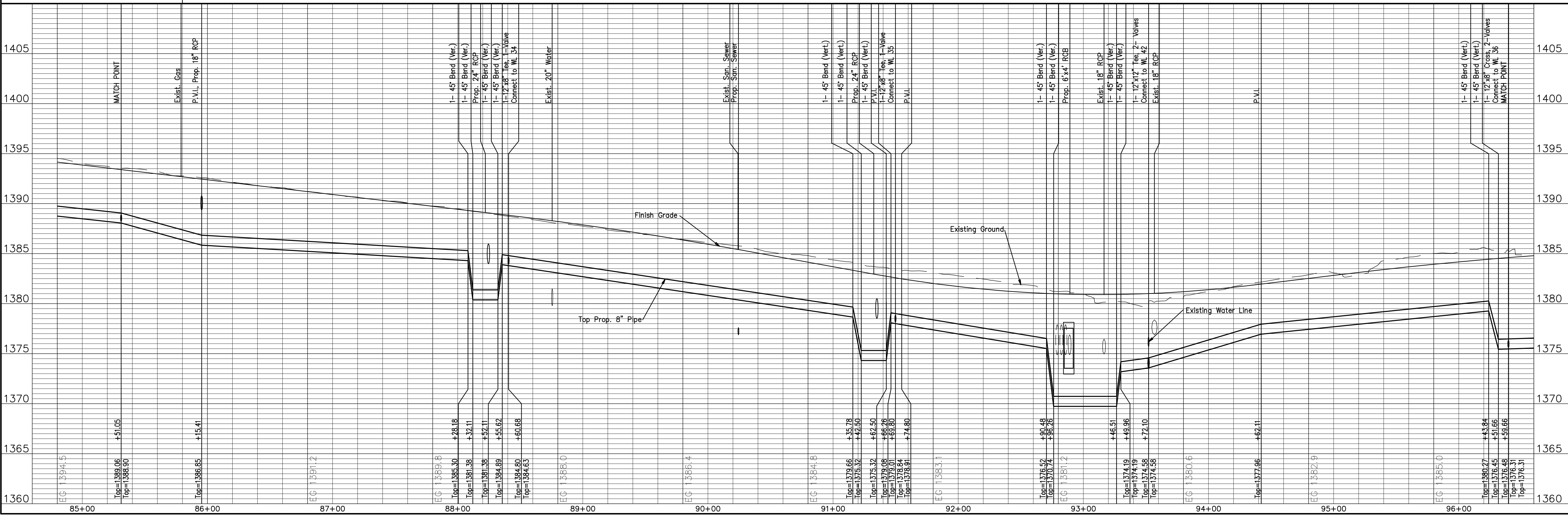
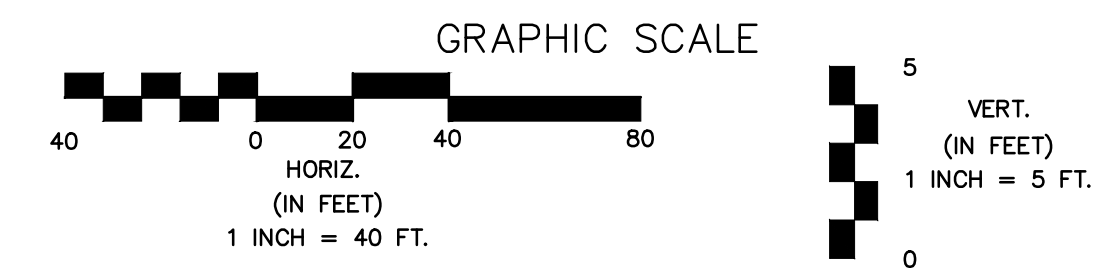
Unless otherwise noted elevations shown are to top of pipe.

Line #	Station	Approximate Length
1	95+83.08	55 LF (Long)

LINE NO. 1

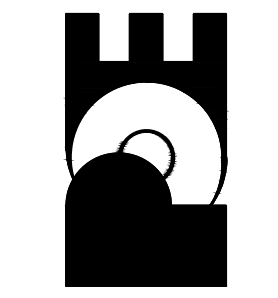
LEGEND:

- Tree Removal
- Existing Building to be Removed by Others
- Water Main to be Removed or Abandon in Place
- Remove Trees Only as Needed for Construction. Cost Shall be Subsidiary to Site Clearing.



13th STREET NORTH FROM KANSAS TO OLIVER
 WATER SUPPLY IMPROVEMENTS
 WATER PLAN & PROFILE
CITY OF WICHITA, KANSAS
 JAMES L. ANKOOR, P.E. - CITY ENGINEER
 C.O.W. Proj. # 448-90551

POE & ASSOCIATES, INC.
 CONSULTING ENGINEERS
 5940 E. Central, Suite 200 Wichita, KS 67208-4242
 Phone 316/685-4114 FAX 316/685-4444



FINAL

Engineer: J. DICKMAN
 Designer: M. TUCKER
 P.O. Job No.: 1871
 Date: MARCH 2012

Sheet
 346 of 374