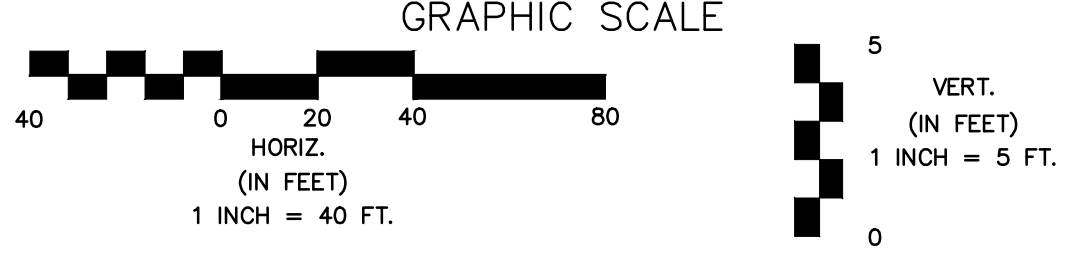


**NOTES:**  
 1. Contractor to Field Verify location and Depth of All Utilities Prior to Construction and Report Findings to Project Engineer.

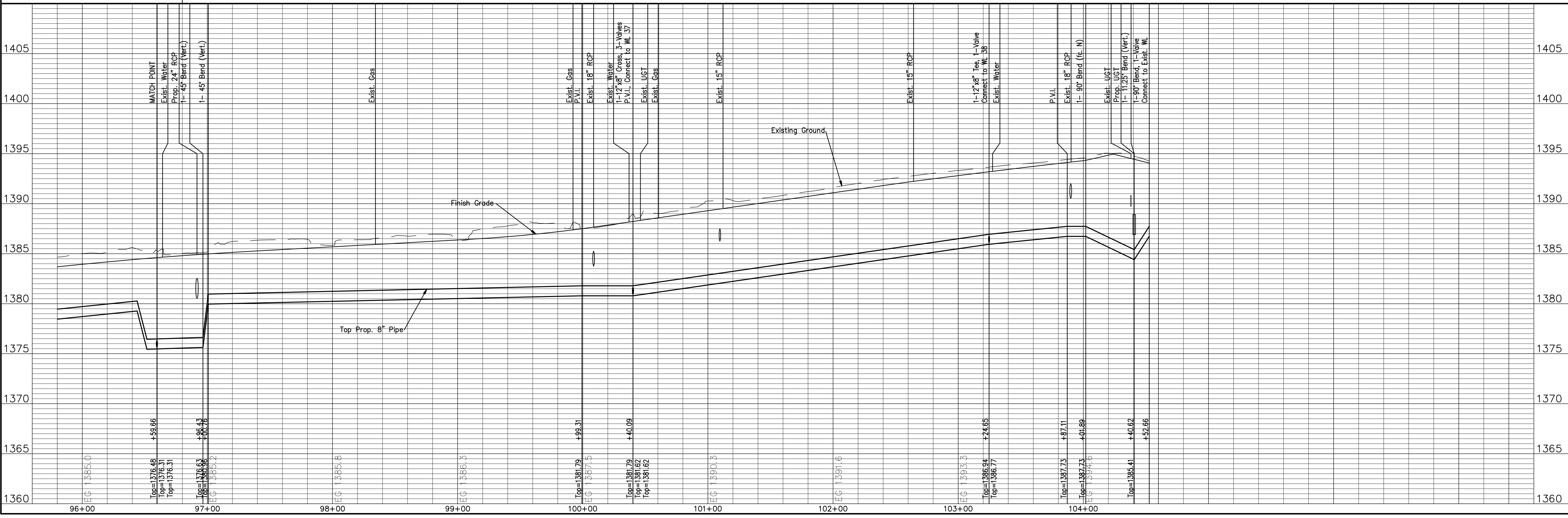
Line #	Station	Approximate Length
1	97+68.58	55 LF (Long)
1	101+61.63	55 LF (Long)

**LEGEND:**

- Tree Removal
- Existing Building to be Removed by Others
- Water Main to be Removed or Abandon in Place
- Remove Trees Only as Needed for Construction. Cost Shall be **Subsidiary** to Site Clearing.



**LINE NO. 1**



No.	Date	By	Approved	Revision

13th STREET NORTH FROM KANSAS TO OLIVER  
 WATER SUPPLY IMPROVEMENTS  
 WATER PLAN & PROFILE  
**CITY OF WICHITA, KANSAS**  
 JAMES L. ARNOOR, P.E. - CITY ENGINEER  
 C.O.W. Proj. # 448-90551

---

**POE & ASSOCIATES, INC.**  
 CONSULTING ENGINEERS  
 5940 E. Central, Suite 200 Wichita, KS 67208-4242  
 Phone 316/685-4114 FAX 316/685-4444

---

**FINAL**

Engineer: J. DICKMAN  
 Designer: M. TUCKER  
 P.O. Job No.: 1871  
 Date: MARCH 2012

Sheet  
 347 of 374