

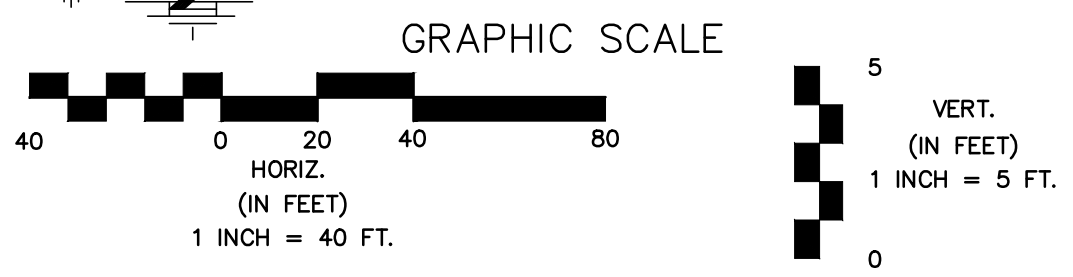
NOTES:
 1. Contractor to Field Verify location and Depth of All Utilities Prior to Construction and Report Findings to Project Engineer.

Line #	Station	Approximate Length
7	0+45.95	40 LF (Long)
8	1+45.21	6 LF (Short)
8	1+47.21	6 LF (Short)
8	1+49.21	6 LF (Short)

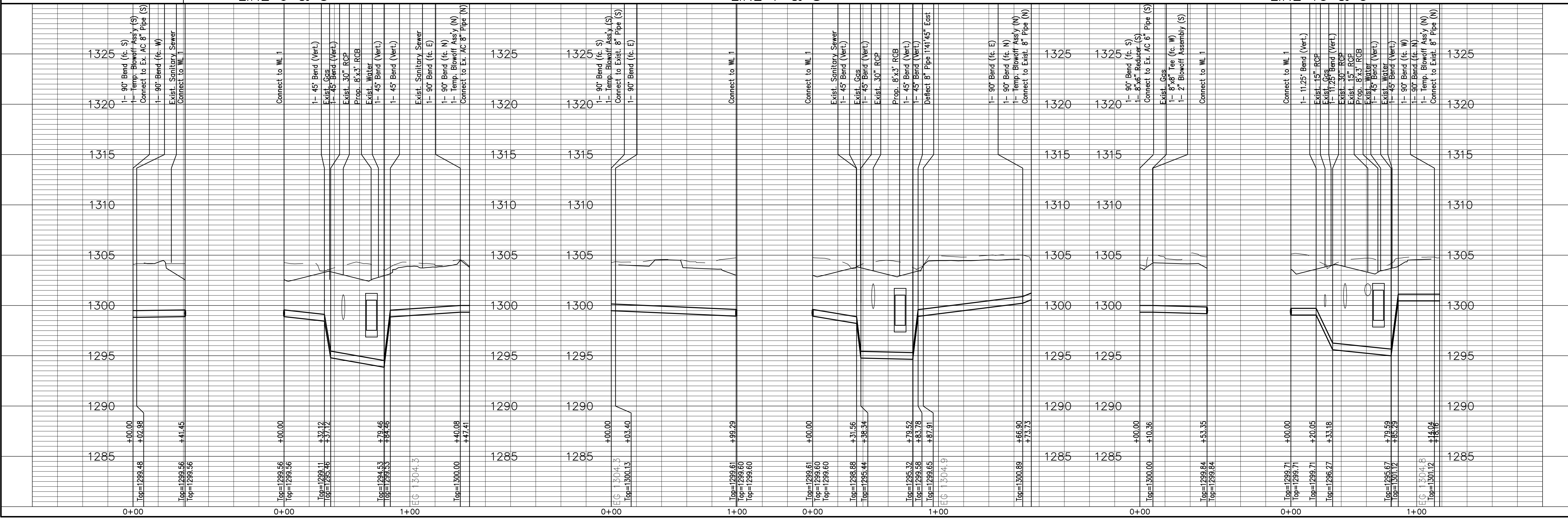
LEGEND:

- Tree Removal
- Existing Building to be Removed by Others
- Water Main to be Removed or Abandon in Place

Remove Trees Only as Needed for Construction. Cost Shall be Subsidiary to Site Clearing.

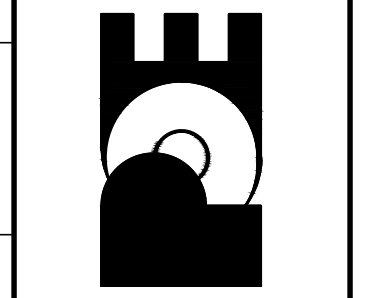


Unless otherwise noted elevations shown are to top of pipe.



13th STREET NORTH FROM KANSAS TO OLIVER
 WATER SUPPLY IMPROVEMENTS
 WATER PLAN & PROFILE
CITY OF WICHITA, KANSAS
 JAMES L. ARNDOR, P.E. - CITY ENGINEER
 C.O.W. Proj. # 448-90551

POE & ASSOCIATES, INC.
 CONSULTING ENGINEERS
 5940 E. Central, Suite 200 Wichita, KS 67208-4242
 Phone 316/685-4114 FAX 316/685-4444



FINAL
 Engineer: J. DICKMAN
 Designer: M. TUCKER
 P.O. Job No.: 1871
 Date: MARCH 2012
 Sheet 349 of 374