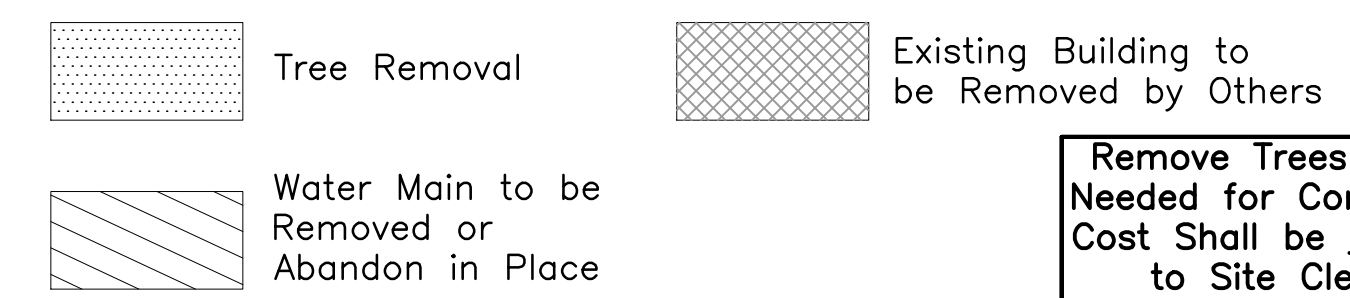


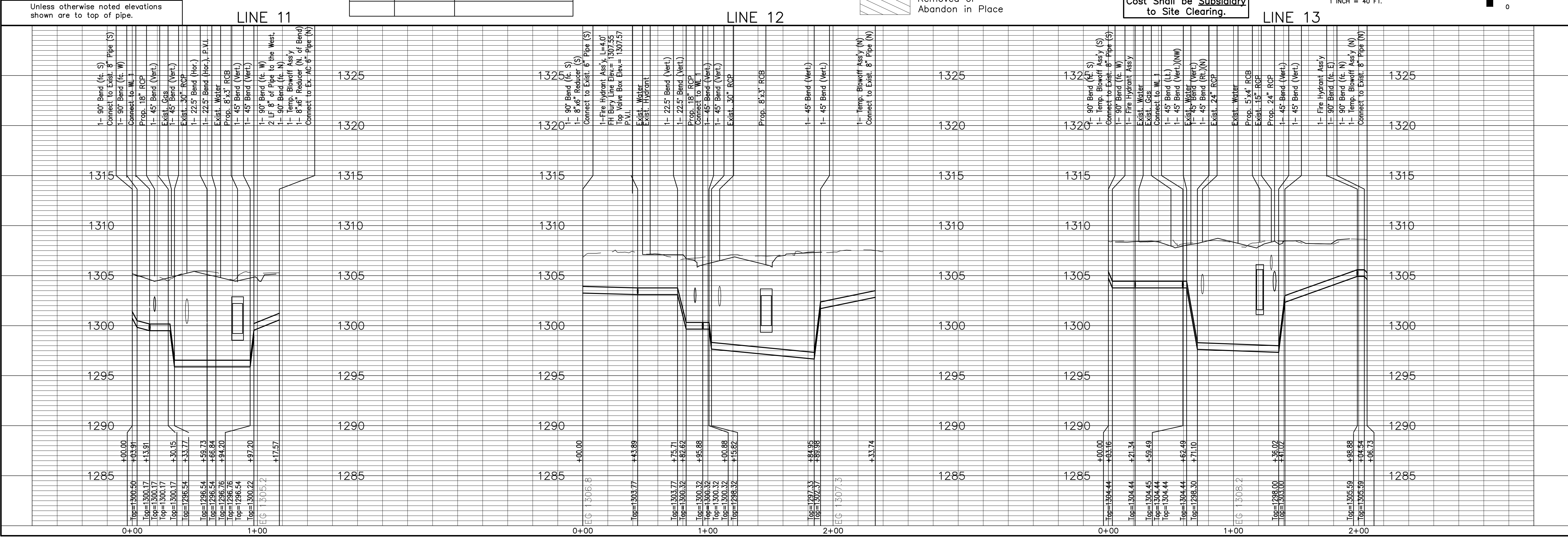
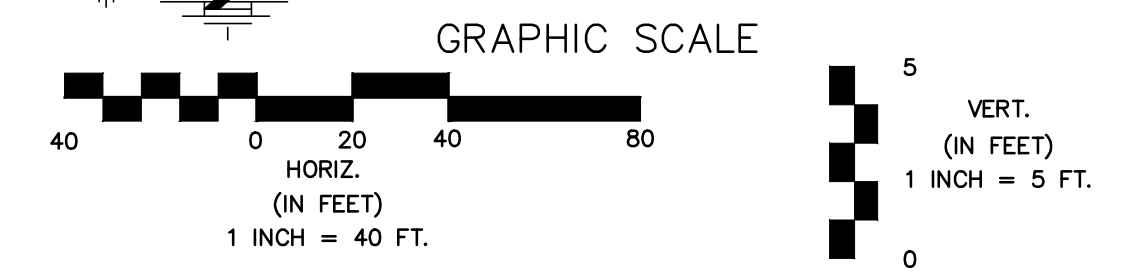
NOTES:
 1. Contractor to Field Verify location and Depth of All Utilities Prior to Construction and Report Findings to Project Engineer.

Line #	Station	Approximate Length
12	2+16.36	12 LF (Short)
13	0+39.47	5 LF (Short)
13	1+34.14	65 LF (Long)
13	1+93.28	4 LF (Short)

LEGEND:



Remove Trees Only as Needed for Construction. Cost Shall be Subsidiary to Site Clearing.



13th STREET NORTH FROM KANSAS TO OLIVER
 WATER SUPPLY IMPROVEMENTS
 WATER PLAN & PROFILE
CITY OF WICHITA, KANSAS
 JAMES L. ARNOOR, P.E. - CITY ENGINEER
 C.O.W. Proj. # 448-90551

POE & ASSOCIATES, INC.
 CONSULTING ENGINEERS
 5940 E. Central, Suite 200 Wichita, KS 67208-4242
 Phone 316/685-4114 FAX 316/685-4444

FINAL

Engineer: J. DICKMAN
 Designer: M. TUCKER
 Job No.: 1871
 Date: MARCH 2012

Sheet 350 of 374