

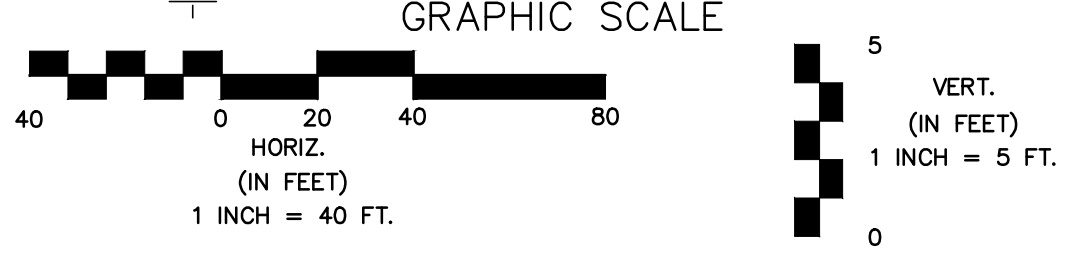
**NOTES:**  
 1. Contractor to Field Verify location and Depth of All Utilities Prior to Construction and Report Findings to Project Engineer.

Line #	Station	Approximate Length
Table Left Blank Intentionally		

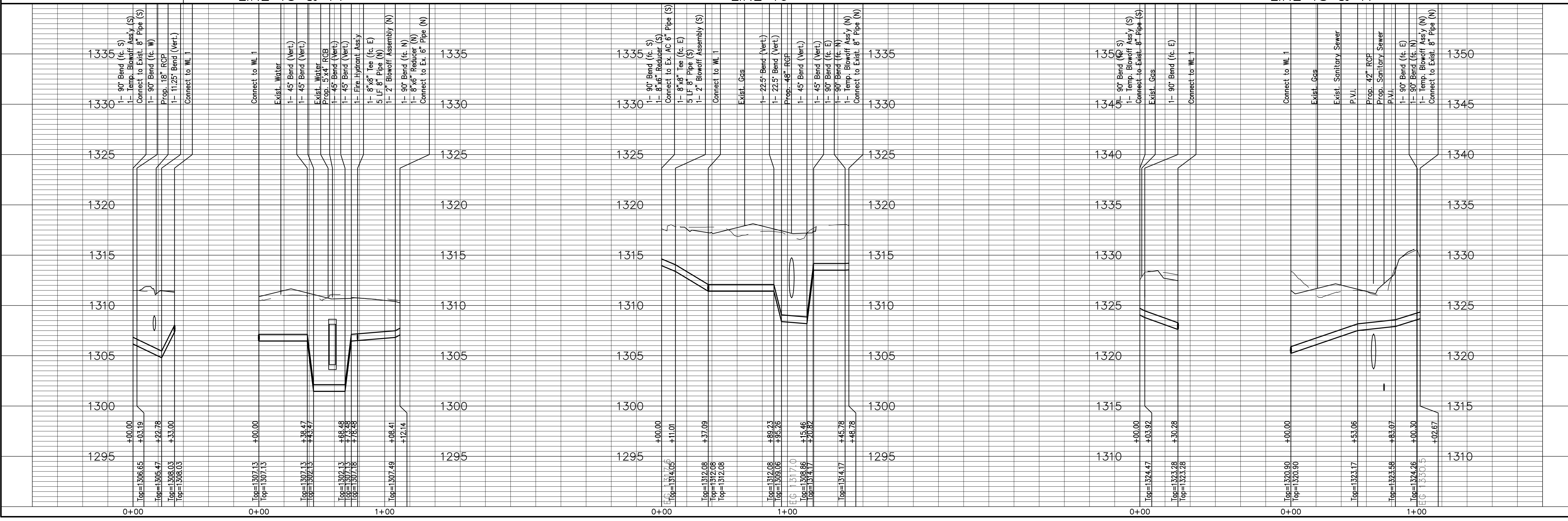
**LEGEND:**

- Tree Removal
- Existing Building to be Removed by Others
- Water Main to be Removed or Abandon in Place

Remove Trees Only as Needed for Construction. Cost Shall be Subsidiary to Site Clearing.



Unless otherwise noted elevations shown are to top of pipe.



No.	Date	By	Approved	Revision

13th STREET NORTH FROM KANSAS TO OLIVER  
 WATER SUPPLY IMPROVEMENTS  
 WATER PLAN & PROFILE  
**CITY OF WICHITA, KANSAS**  
 JAMES L. ARNDOR, P.E. - CITY ENGINEER  
 C.O.W. Proj. # 448-90551

---

**POE & ASSOCIATES, INC.**  
 CONSULTING ENGINEERS  
 5940 E. Central, Suite 200 Wichita, KS 67208-4242  
 Phone 316/685-4114 FAX 316/685-4444

---

**FINAL**

Engineer: J. DICKMAN  
 Designer: M. TUCKER  
 Job No.: 1871  
 Date: MARCH 2012

Sheet 351 of 374