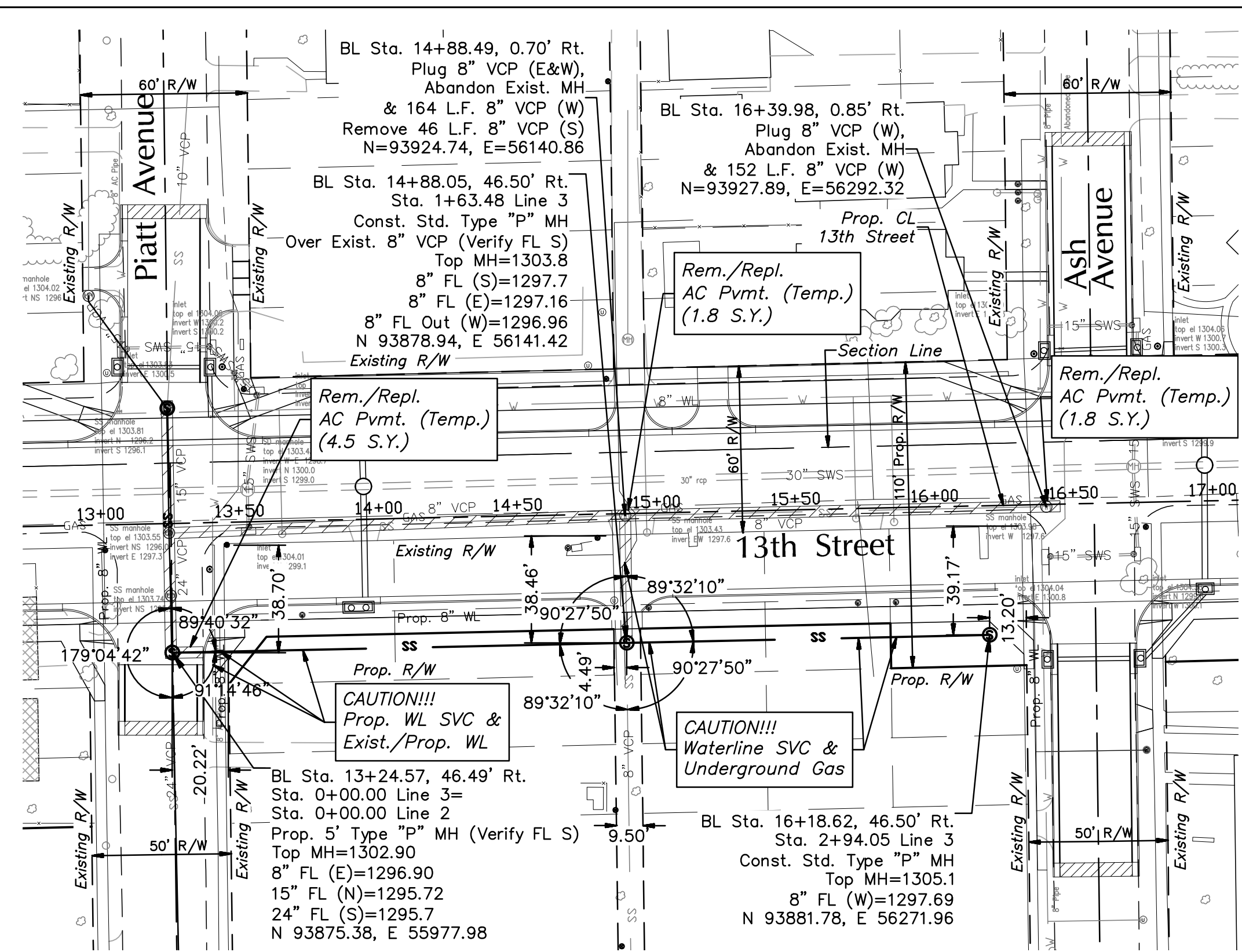


**LINE #3A, #3B, #3C, and #3D**



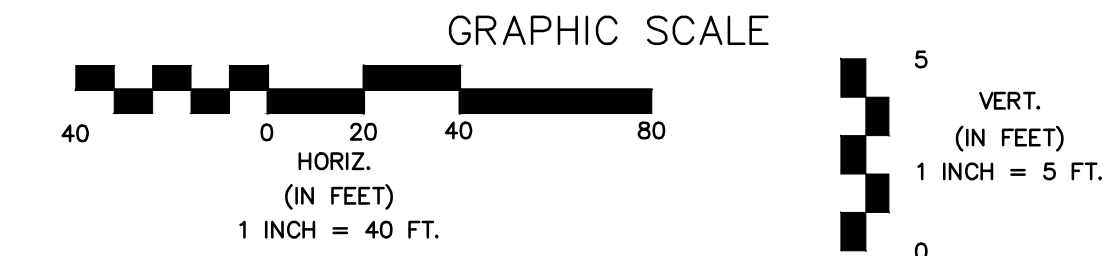
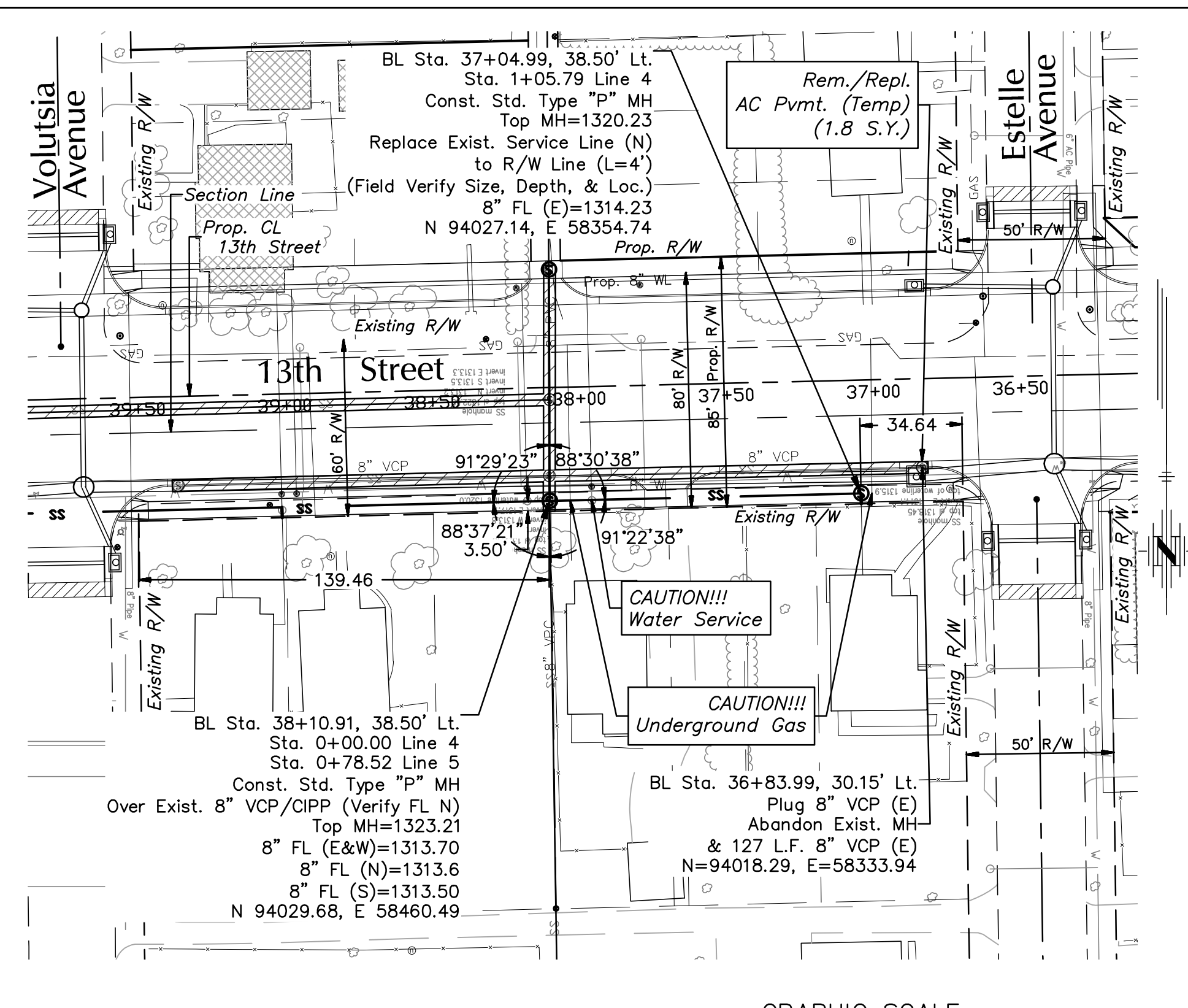
**NOTES:**  
 1. Contractor to Field Verify location and Depth of All Utilities Prior to Construction and Report Findings to Project Engineer.

**Remove Trees Only as Needed for Construction. Cost Shall be Subsidiary to Site Clearing.**

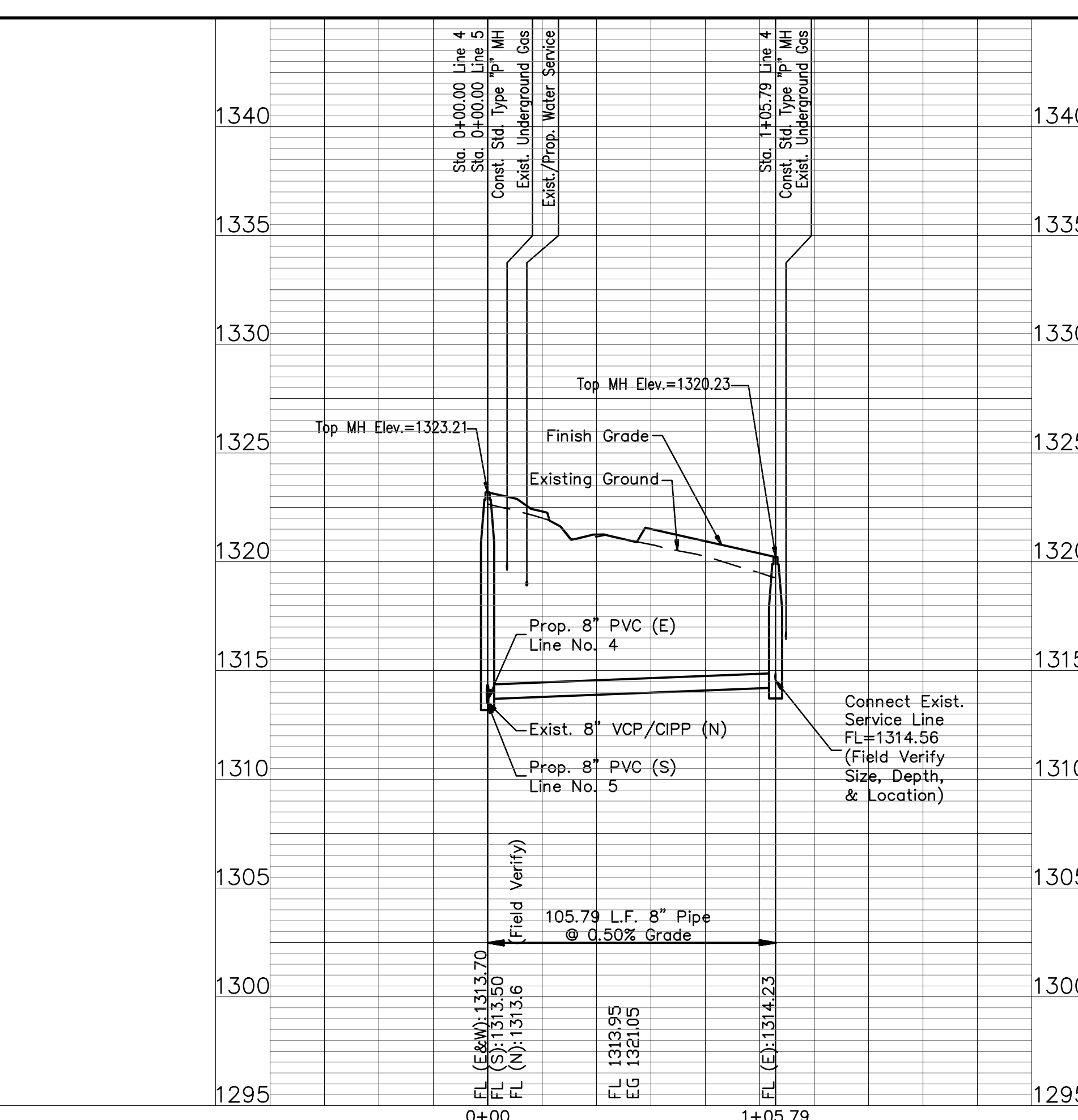
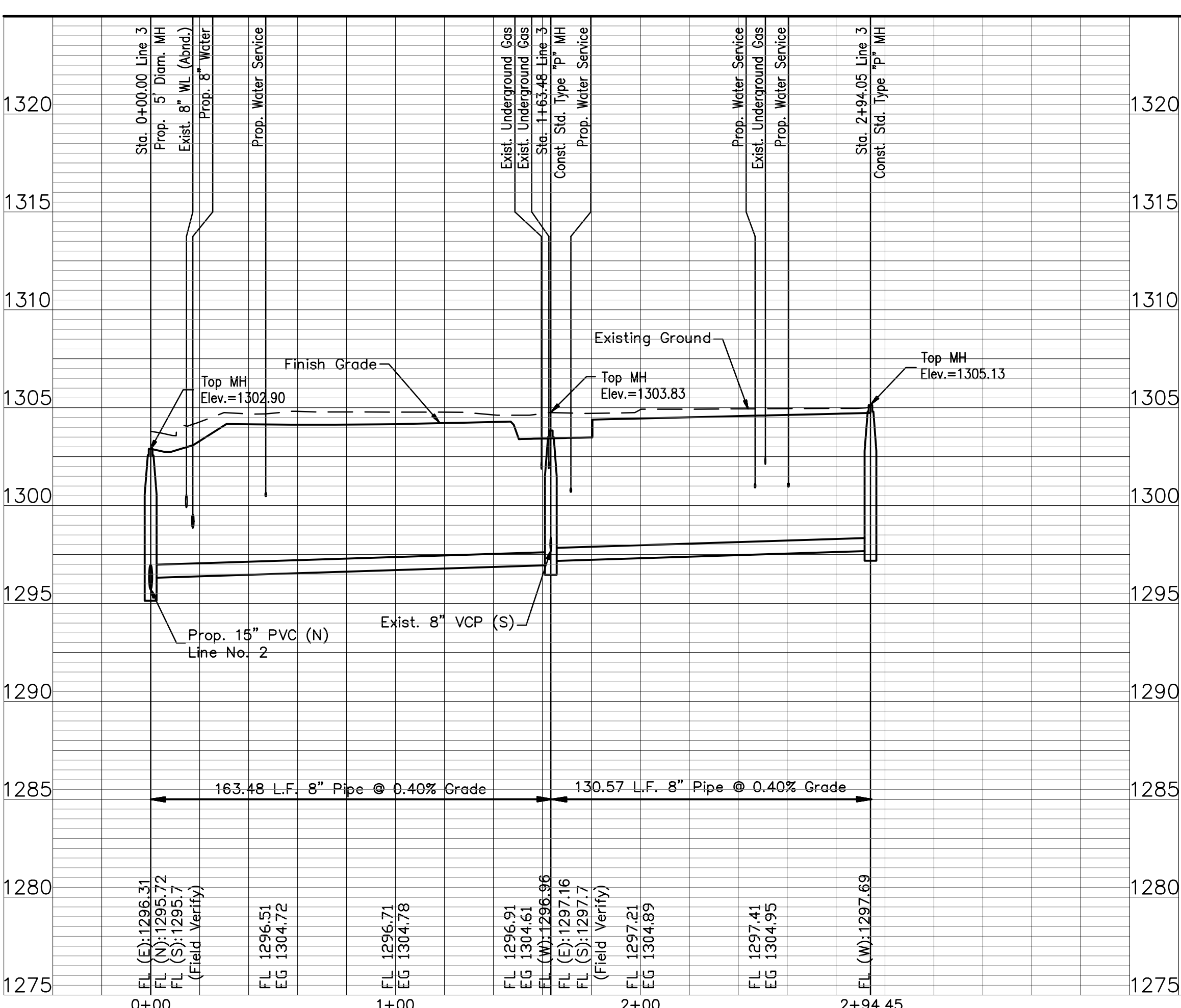
**LEGEND:**

- Sanitary Sewer to be Abandoned in Place or Removed as Noted in Plan
- Existing Building to be Removed by Others

**LINE #3**



**LINE #4**



13TH STREET NORTH FROM HYDRAULIC TO OLIVER  
 SANITARY SEWER EXTENSIONS  
 LINE NO. 3A, 3B, 3C, 3D, 3 & 4  
 CITY OF WICHITA, KANSAS  
 JAMES L. ARMOUR, P.E. - CITY ENGINEER  
 C.O.W. Proj. No. 466-84816 OCA No. 7624100

**POE & ASSOCIATES, INC.**  
 CONSULTING ENGINEERS  
 5940 E. Central, Suite 200 ■ Wichita, KS 67208-0242  
 Phone 316/685-4114 ■ FAX 316/685-4444

**FINAL**

Designed By: J. DICKMAN  
 Drawn By: M. TUCKER  
 P.O. Job No.: 1871A  
 Date: March 2012

Sheet  
 363 of 374