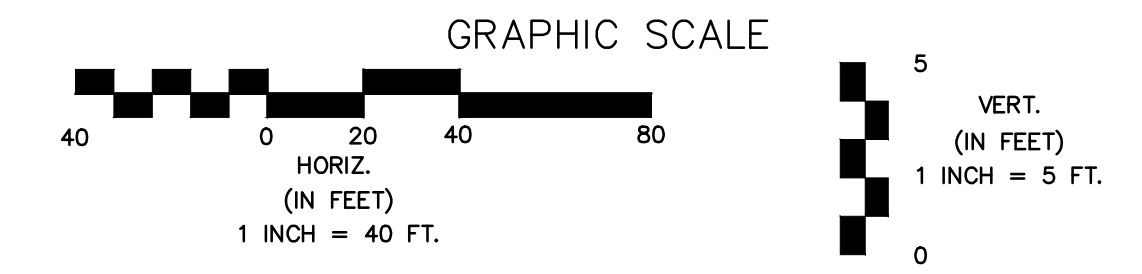
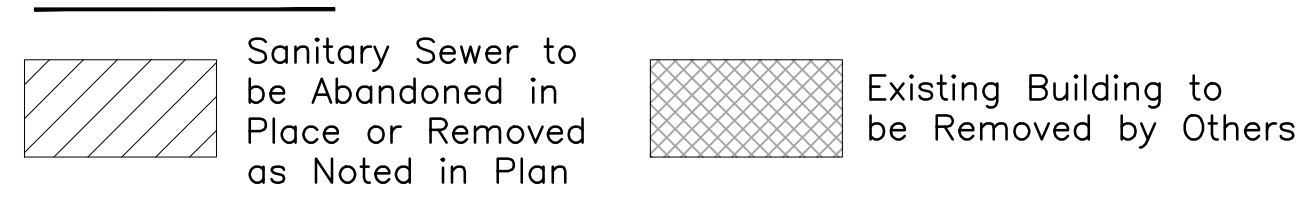


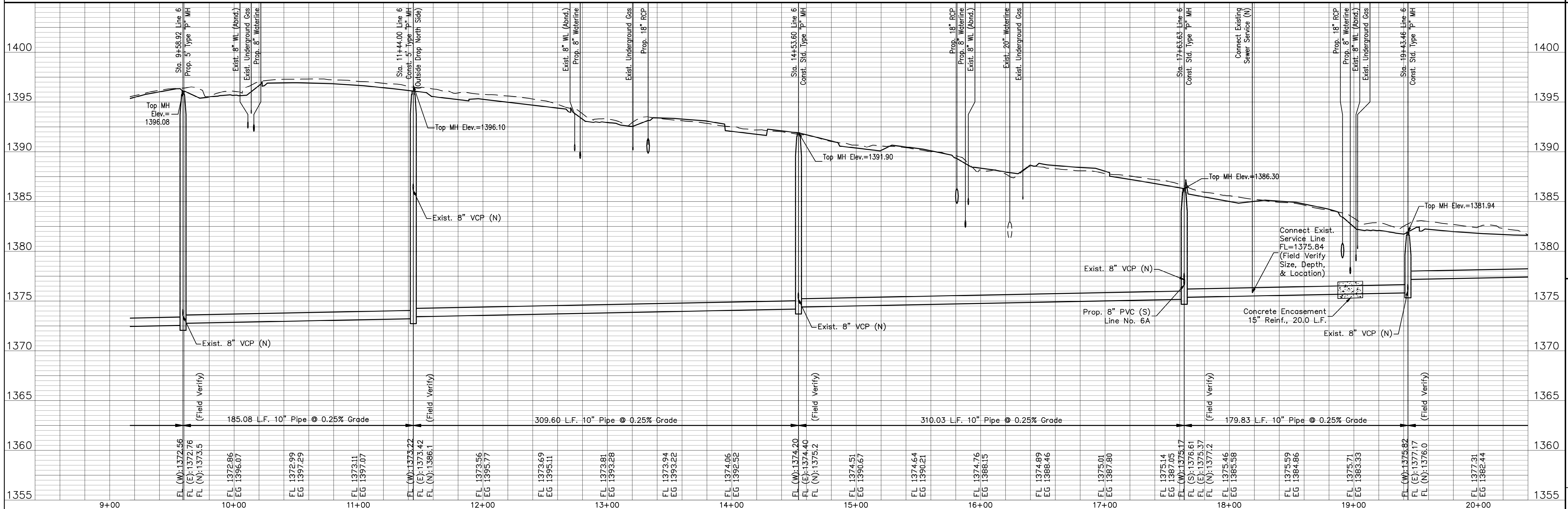
NOTES:
 1. Contractor to Field Verify location and Depth of All Utilities Prior to Construction and Report Findings to Project Engineer.

Remove Trees Only as Needed for Construction. Cost Shall be **Subsidiary** to Site Clearing.

LEGEND



LINE #6 - CONT.



13TH STREET NORTH FROM HYDRAULIC TO OLIVER
 SANITARY SEWER EXTENSIONS
 LINE NO. 6 CONTINUED
CITY OF WICHITA, KANSAS
 JAMES L. ARMOUR, P.E. - CITY ENGINEER
 C.O.W. Proj. No. 466-84816 OCA No. 7624100

POE & ASSOCIATES, INC.
 CONSULTING ENGINEERS
 5940 E. Central, Suite 200 ■ Wichita, KS 67208-0242
 Phone 316/685-4114 ■ FAX 316/685-4444

Designed By: J. DICKMAN
 Drawn By: M. TUCKER
 P.O. Job No.: 1871A
 Date: March 2012

Sheet
 367 of 374