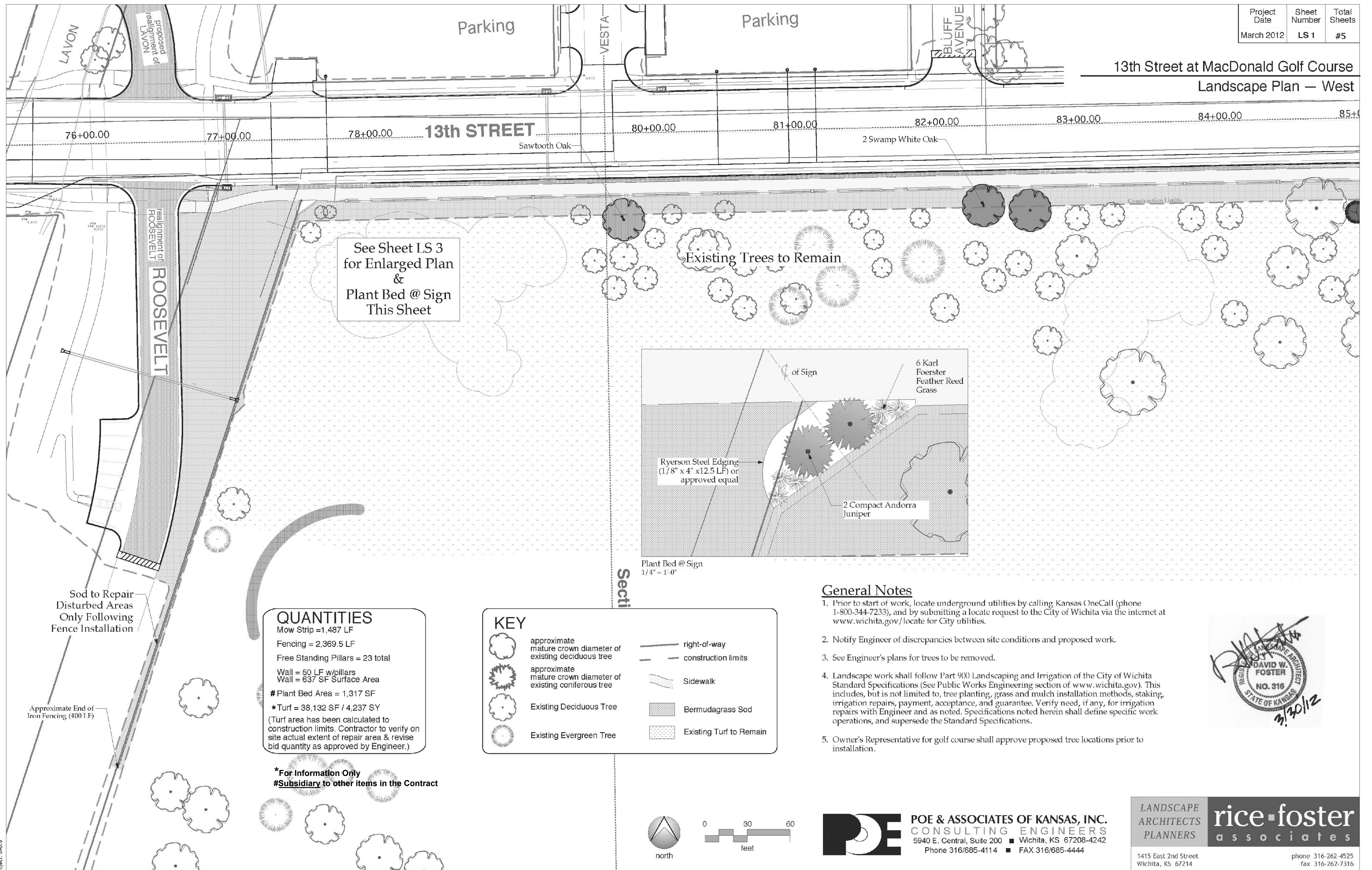
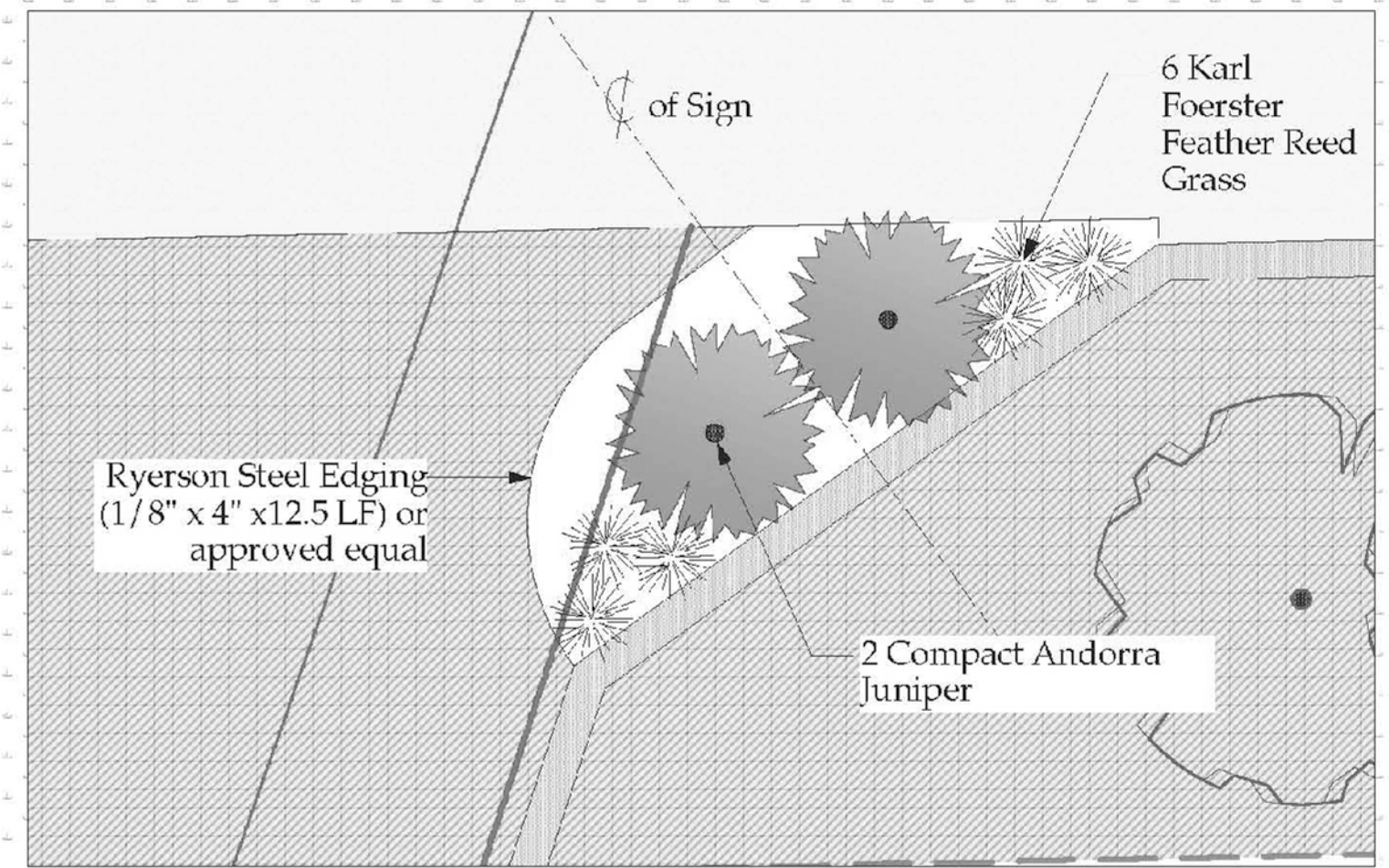


13th Street at MacDonald Golf Course
Landscape Plan — West



See Sheet LS 3
for Enlarged Plan
&
Plant Bed @ Sign
This Sheet



Plant Bed @ Sign
1/4" = 1'-0"

QUANTITIES
Mow Strip = 1,487 LF
Fencing = 2,369.5 LF
Free Standing Pillars = 23 total
Wall = 50 LF w/pillars
Wall = 637 SF Surface Area
Plant Bed Area = 1,317 SF
*Turf = 38,132 SF / 4,237 SY
(Turf area has been calculated to construction limits. Contractor to verify on site actual extent of repair area & revise bid quantity as approved by Engineer.)

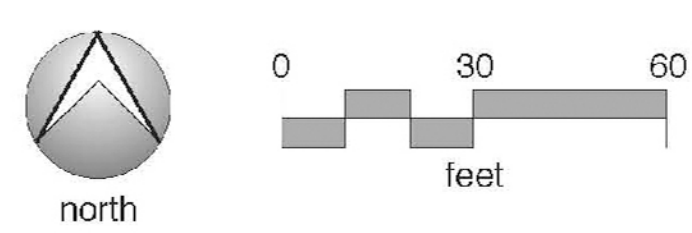
*For Information Only
#Subsidiary to other items in the Contract

KEY

	approximate mature crown diameter of existing deciduous tree		right-of-way
	approximate mature crown diameter of existing coniferous tree		construction limits
	Existing Deciduous Tree		Sidewalk
	Existing Evergreen Tree		Bermudagrass Sod
			Existing Turf to Remain

General Notes

1. Prior to start of work, locate underground utilities by calling Kansas OneCall (phone 1-800-344-7233), and by submitting a locate request to the City of Wichita via the internet at www.wichita.gov/locate for City utilities.
2. Notify Engineer of discrepancies between site conditions and proposed work.
3. See Engineer's plans for trees to be removed.
4. Landscape work shall follow Part 900 Landscaping and Irrigation of the City of Wichita Standard Specifications (See Public Works Engineering section of www.wichita.gov). This includes, but is not limited to, tree planting, grass and mulch installation methods, staking, irrigation repairs, payment, acceptance, and guarantee. Verify need, if any, for irrigation repairs with Engineer and as noted. Specifications noted herein shall define specific work operations, and supersede the Standard Specifications.
5. Owner's Representative for golf course shall approve proposed tree locations prior to installation.



POE & ASSOCIATES OF KANSAS, INC.
CONSULTING ENGINEERS
5940 E. Central, Suite 200 ■ Wichita, KS 67208-4242
Phone 316/685-4114 ■ FAX 316/685-4444

LANDSCAPE ARCHITECTS PLANNERS
rice-foster associates
1415 East 2nd Street
Wichita, KS 67214
phone 316-262-4525
fax 316-262-7316

File Created: Mar. 30th 2012
Project: 0809