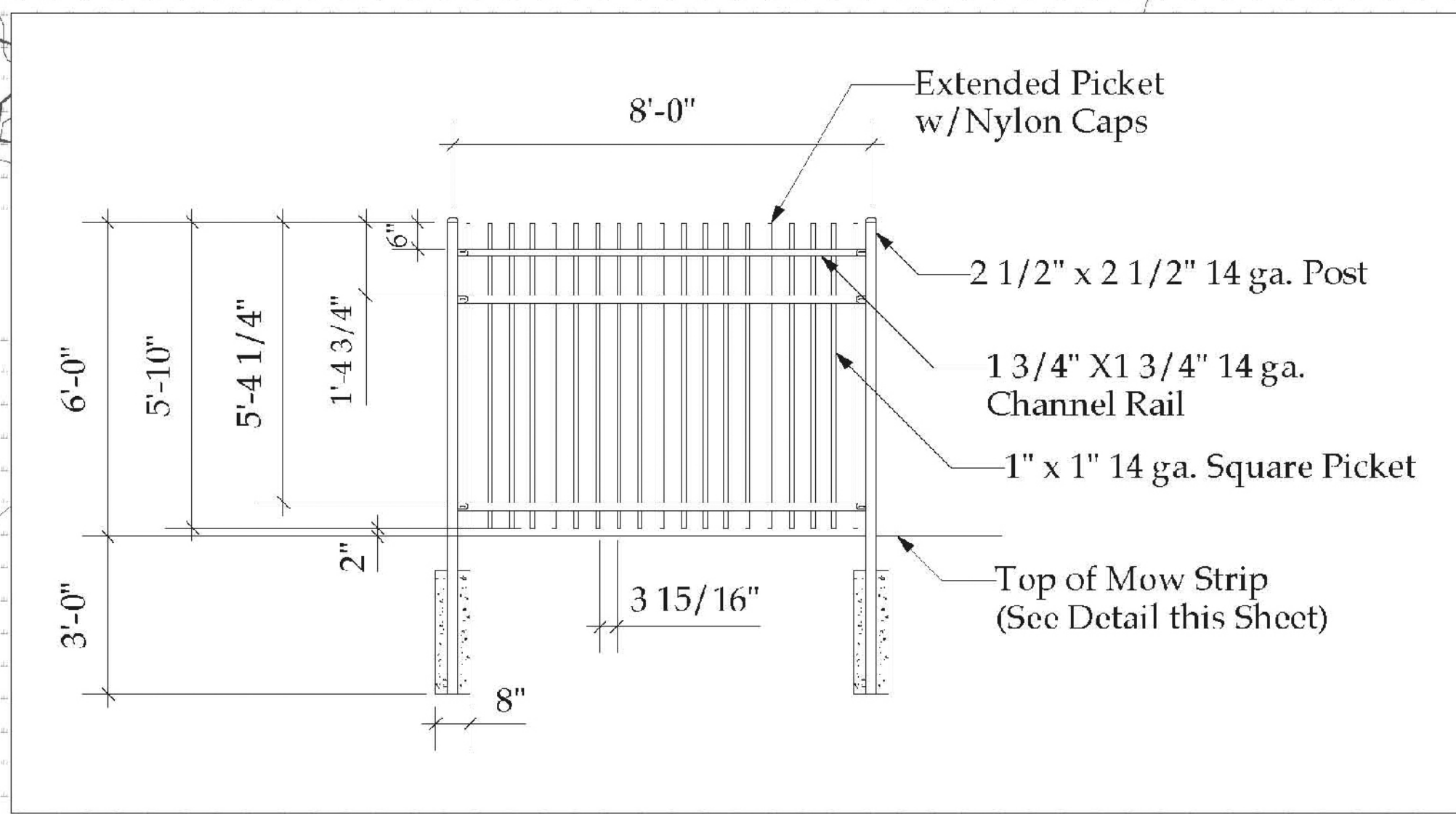
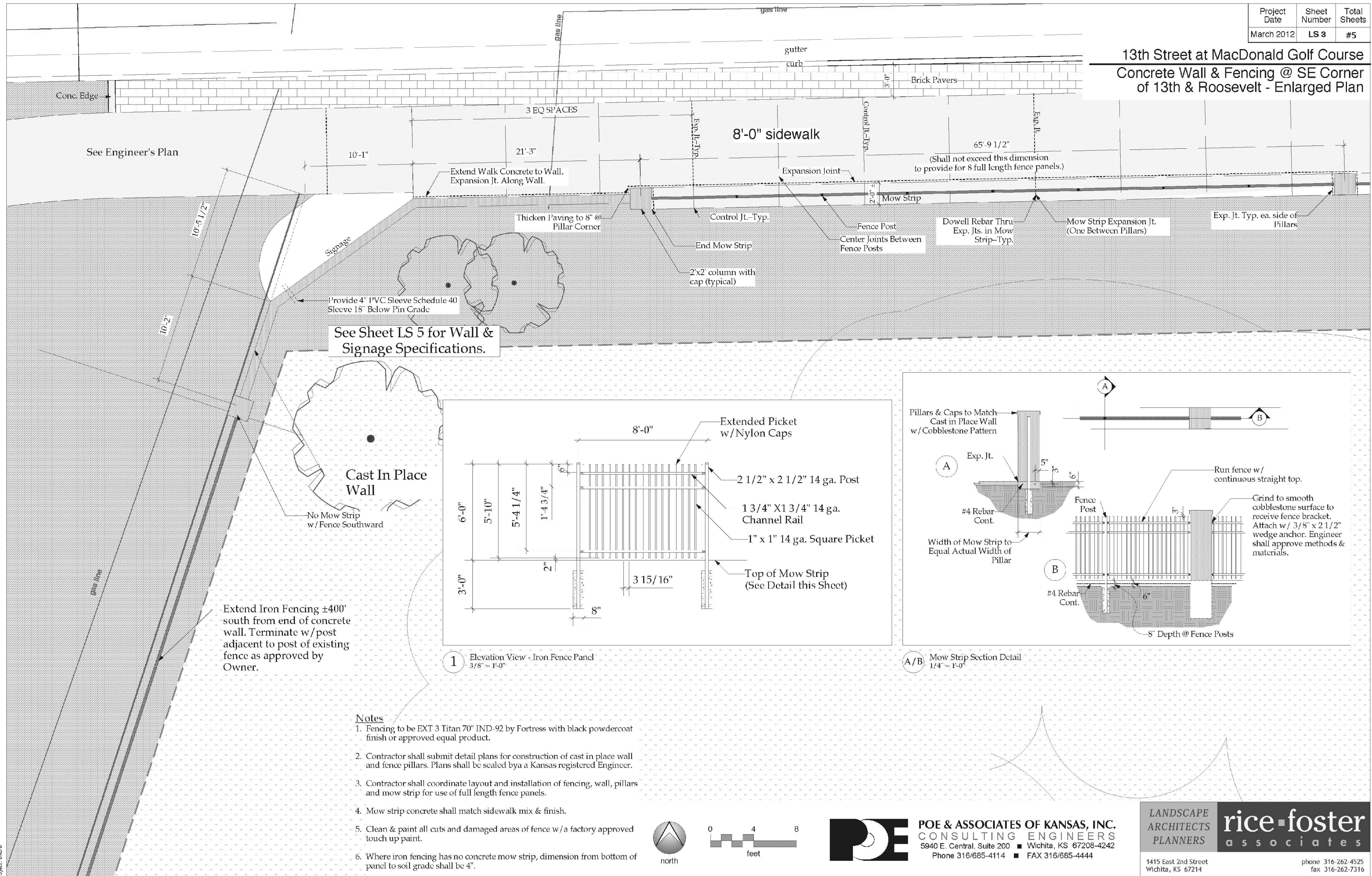
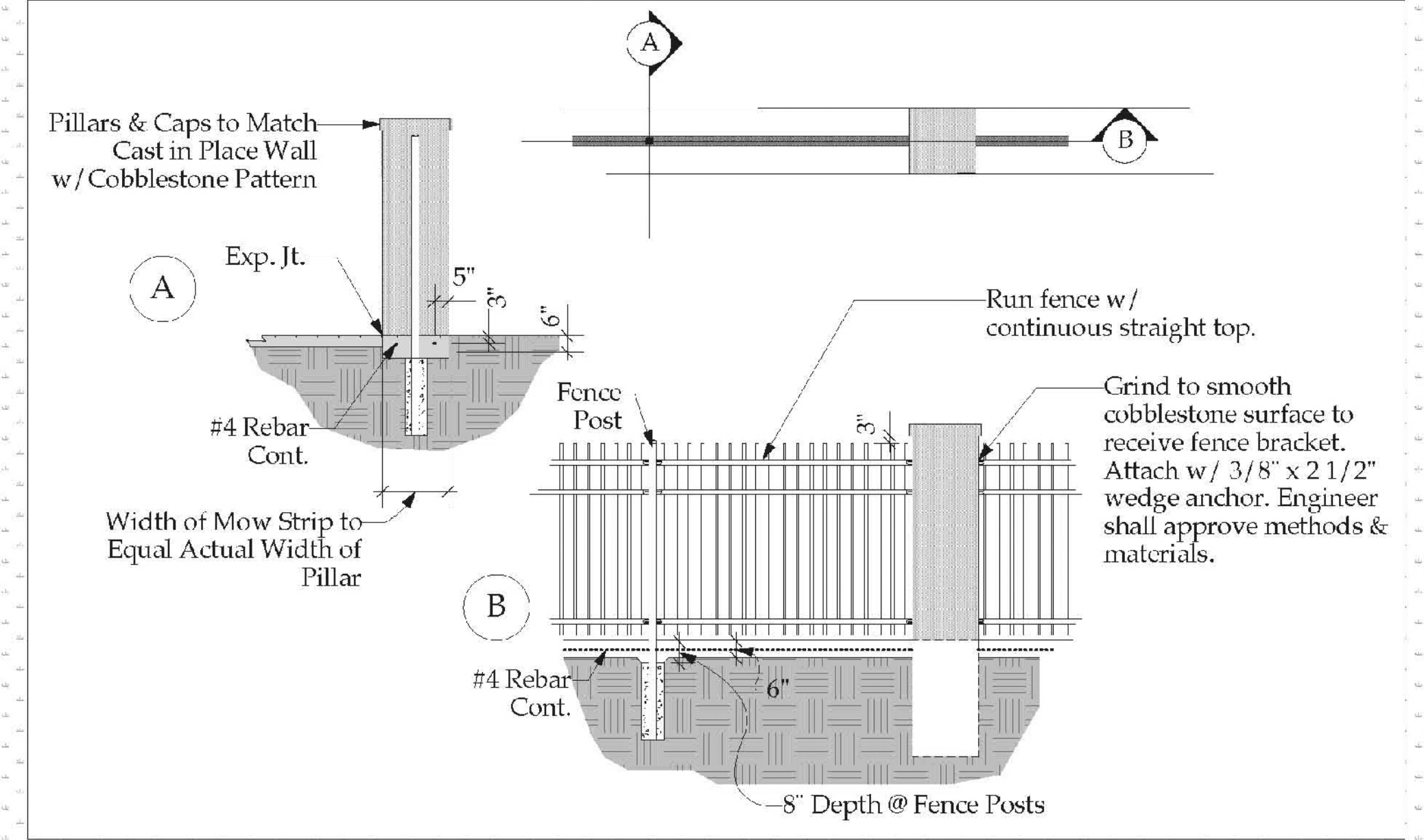


|              |              |              |
|--------------|--------------|--------------|
| Project Date | Sheet Number | Total Sheets |
| March 2012   | LS 3         | #5           |

13th Street at MacDonald Golf Course  
Concrete Wall & Fencing @ SE Corner  
of 13th & Roosevelt - Enlarged Plan

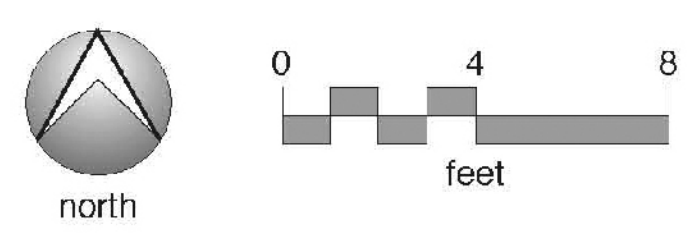


1 Elevation View - Iron Fence Panel  
3/8" = 1'-0"



A/B Mow Strip Section Detail  
1/4" = 1'-0"

- Notes**
- Fencing to be EXT 3 Titan 70" IND-92 by Fortress with black powdercoat finish or approved equal product.
  - Contractor shall submit detail plans for construction of cast in place wall and fence pillars. Plans shall be sealed by a Kansas registered Engineer.
  - Contractor shall coordinate layout and installation of fencing, wall, pillars and mow strip for use of full length fence panels.
  - Mow strip concrete shall match sidewalk mix & finish.
  - Clean & paint all cuts and damaged areas of fence w/a factory approved touch up paint.
  - Where iron fencing has no concrete mow strip, dimension from bottom of panel to soil grade shall be 4".



**POE & ASSOCIATES OF KANSAS, INC.**  
CONSULTING ENGINEERS  
5940 E. Central, Suite 200 ■ Wichita, KS 67208-4242  
Phone 316/685-4114 ■ FAX 316/685-4444

**LANDSCAPE ARCHITECTS PLANNERS**  
**rice-foster associates**  
1415 East 2nd Street  
Wichita, KS 67214  
phone 316-262-4525  
fax 316-262-7316

File Created: Mar. 30th 2012  
Project: 0916