

BENCHMARK:
 BM #106 - Railroad Spike in the West Face of the Light Pole on the East Side of Brookhaven between #4954 & #4942.
 Elev. = 1269.12 (NAVD 88)

Sta. 17+47.63, Water Line 7 =
 B.L. Sta. 18+41.29, 14.79' Lt.
 Deflect Pipe 4' 00' (Rt.)

Sta. 18+27.63, Water Line 7 =
 B.L. Sta. 19+19.53, 15.48' Lt.
 Deflect Pipe 4' 00' (Rt.)

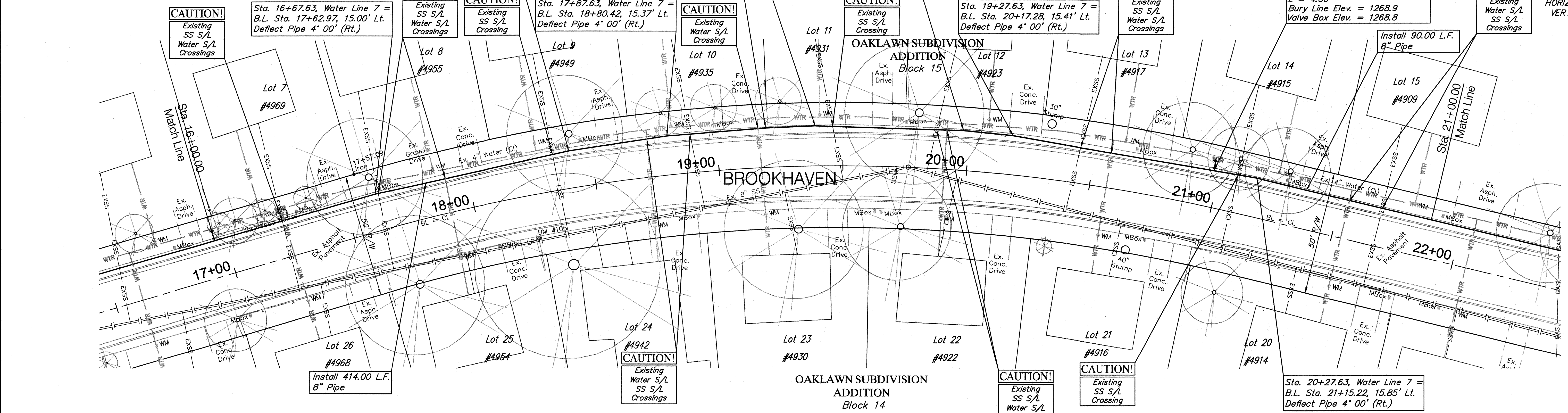
Sta. 18+47.63, Water Line 7 =
 B.L. Sta. 19+39.08, 15.70' Lt.
 Deflect Pipe 4' 00' (Rt.)

Sta. 19+07.63, Water Line 7 =
 B.L. Sta. 19+97.73, 15.66' Lt.
 Deflect Pipe 4' 00' (Rt.)

Sta. 20+10.00, Water Line 7 =
 B.L. Sta. 21+15.22, 15.85' Lt.
 Install 1-Fire Hydrant Assy. (W)
 L = 4.00'
 Bury Line Elev. = 1268.9
 Valve Box Elev. = 1268.8

CAUTION!
 Existing Water S/L
 SS S/L
 Crossings

SCALE:
 HORIZONTAL: 1" = 20'
 VERTICAL: 1" = 5'



Water Line 7

