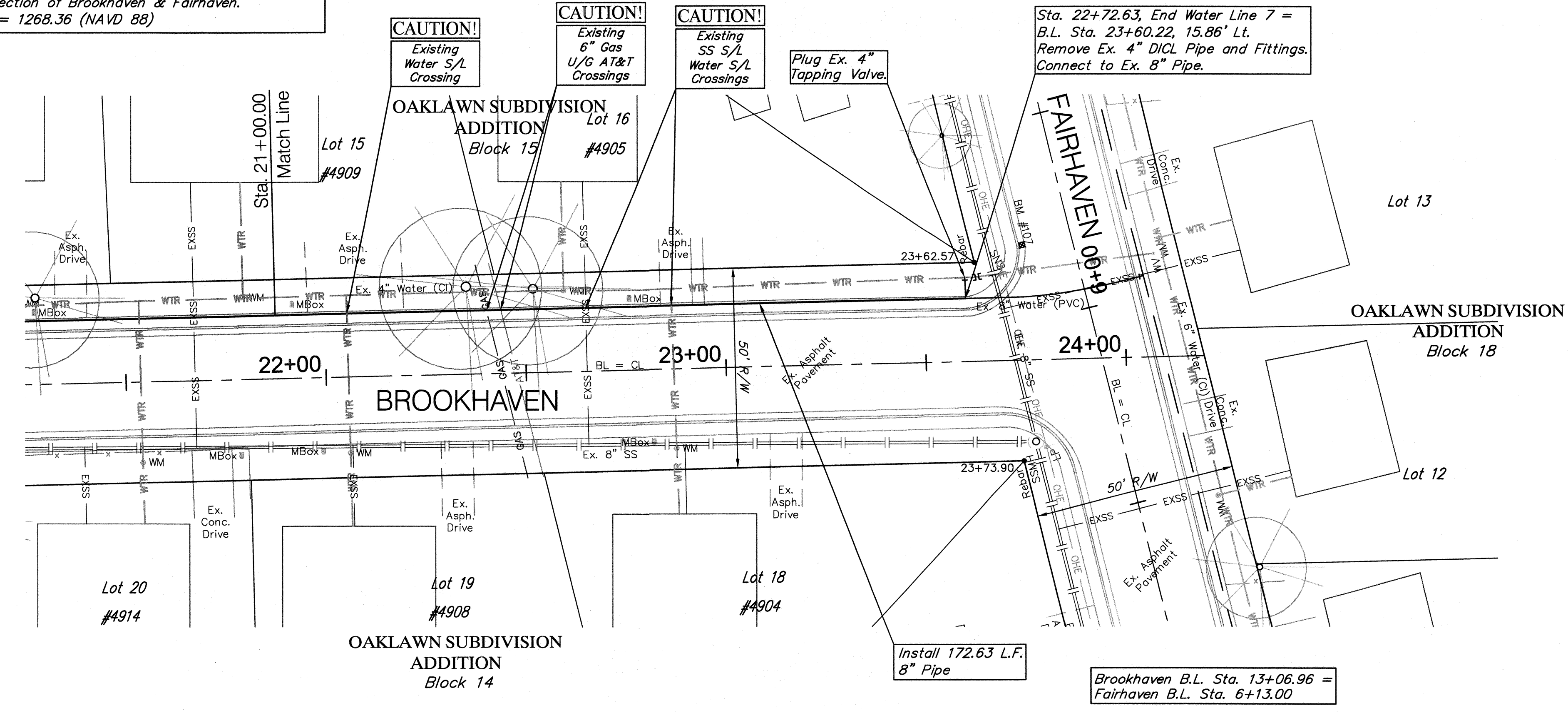
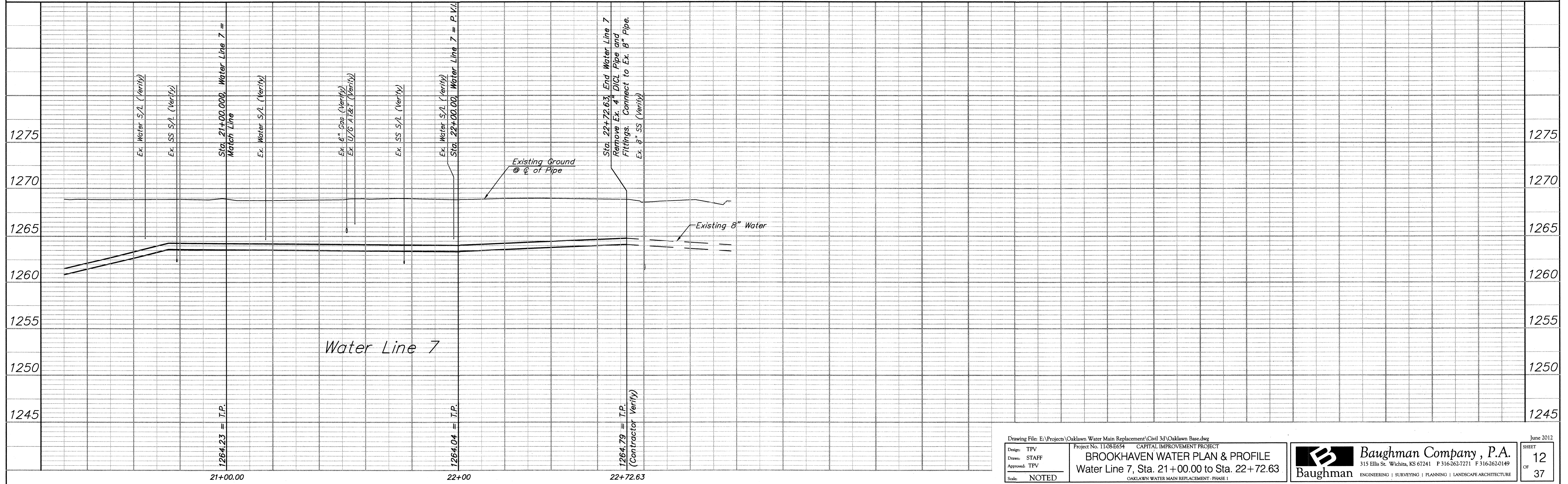


BENCHMARK:
 BM #107 - Chiseled "+" in the Flowline of the Curb at the West End of the SW Curb Return of the Intersection of Brookhaven & Fairhaven.
 Elev. = 1268.36 (NAVD 88)

SCALE:
 HORIZONTAL: 1" = 20'
 VERTICAL: 1" = 5'



Water Line 7



| | | | | | |
|--|--------------|--|--|--|--|
| Drawing File: E:\Projects\Oaklawn Water Main Replacement\Civil 3D\Oaklawn Base.dwg | | Project No. 11-08-E654 CAPITAL IMPROVEMENT PROJECT | | June 2012 | |
| Design: TFW | Drawn: STAFF | BROOKHAVEN WATER PLAN & PROFILE | | SHEET 12 | |
| Approved: TFW | Scale: NOTED | Water Line 7, Sta. 21+00.00 to Sta. 22+72.63 | | OF 37 | |
| | | OAKLAWN WATER MAIN REPLACEMENT - PHASE 1 | | Baughman ENGINEERING SURVEYING PLANNING LANDSCAPE ARCHITECTURE | |