

Estimated 2 Service Reconnections (4")
 Estimated 1 Drop Inlet Protection
 Estimated 240 lf Silt Fence

A concrete slab over the sanitary sewer at 9127 W. 10th Street shall be removed by the Contractor. Cost subsidiary to Site Clearing.

The owner of 9127 W. 10th wanted it noted that he has a sprinkler system in yard.

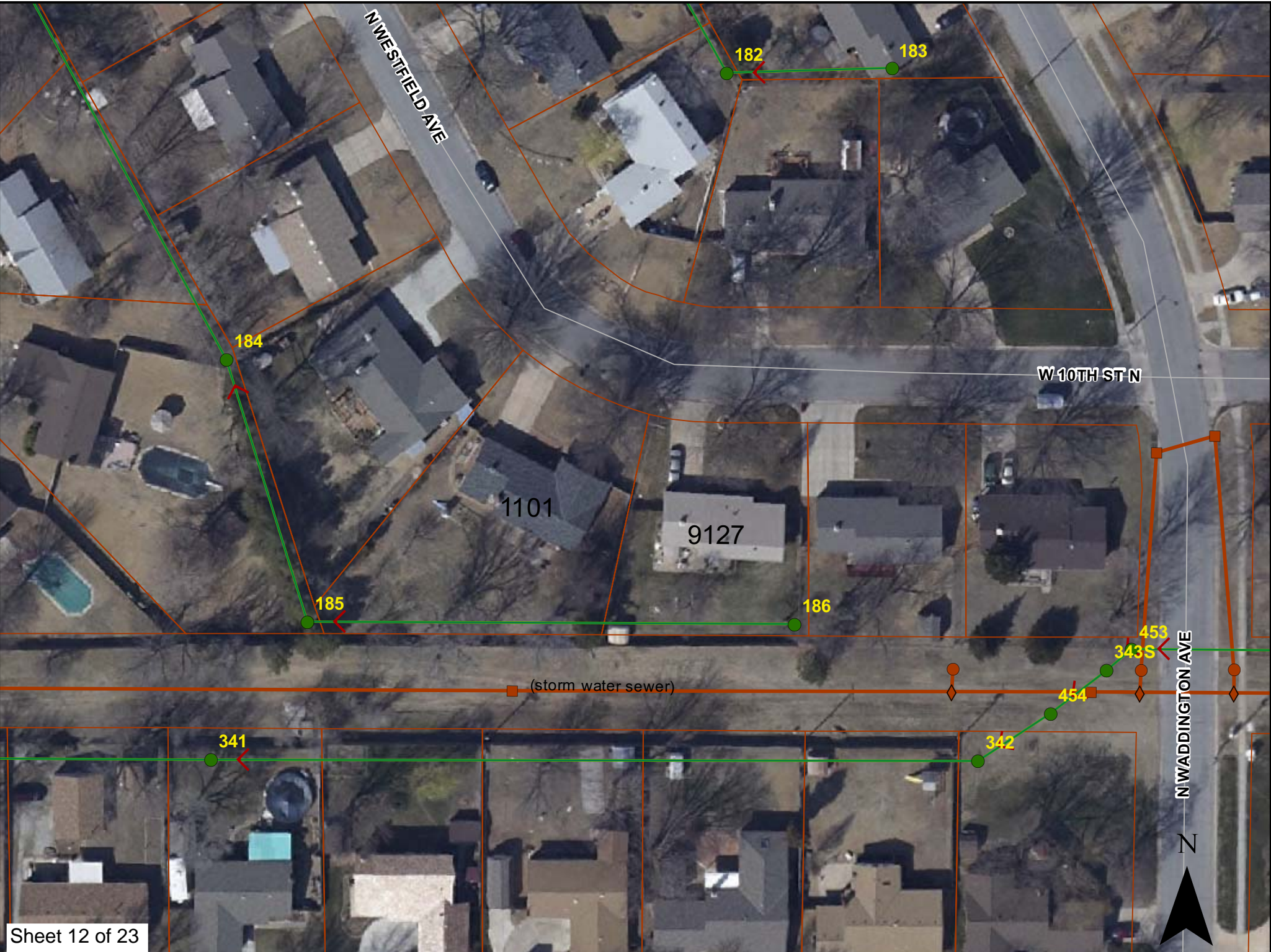
MH # 4848-185
 Replace Manhole Frame & Cover
 Est MH depth = 7.8 ft
 1032 N. Murray Ct.

MH # 4848-186
 Replace Manhole Frame & Cover
 Est MH depth = 7.5 ft
 9127 W. 10th St. N.

Remove 234 lf of 8" pipe
 Install 234 lf of 8" pipe

SITE 3







Video Inspection Master Report

4/5/2012

10:41 AM

US Structure: 4848-186 9127 W 10TH ST N Date Insp: 4/28/2009 Basin: W06A
 DS Structure: 4848-185 1111 N WESTFIELD ST Dir Televised: Downstream To Upstream

Pipe Information

Project No. : K-068 Dia: 8 Material: VCP Length: 233.0 Slope: 0.400

Obs. #	VTR Counter	Distance	Location	Description	Rating	Obsrvd (gpm)	Ratings			Remain (gpm)
							Est. (gpm)	Struct	Clean	
1		0.0	TV Against the Flow	4848-185 DS Manhole	1		0.000	0	0	0.000
2		0.0	Joint	Offset	2		0.000	0	0	0.000
3		6.8		Broken Pipe	4		0.030	78	0	0.030
4		8.1	Joint	Offset	5		0.060	100	0	0.060
5		10.4		Sag	4		0.000	10	0	0.000
6		16.8	Joint	Offset	4		0.030	60	0	0.030
(the pipe from 8' to 16' sits lower than the rest of the pipe)										
7		21.0		Sag	1		0.000	1	0	0.000
8		21.9		Sag	3		0.000	5	0	0.000
9		22.6		Sag	1		0.000	1	0	0.000
10		24.4	Joint	Offset	2		0.000	0	0	0.000
11		40.3	Joint	Offset	3		0.010	20	0	0.010
12		44.4	Joint	Offset	3		0.010	20	0	0.010
13		48.6	Joint	Offset	3		0.010	20	0	0.010
14		49.1		Sag	3		0.000	5	0	0.000
15		51.6		Sag	1		0.000	1	0	0.000
16		56.4	Joint	Offset	3		0.010	20	0	0.010
17		60.5	Joint	Offset	3		0.010	20	0	0.010
18		64.5	Joint	Offset	2		0.000	0	0	0.000
19		66.5		Sag	3		0.000	5	0	0.000
20		68.6	Joint	Offset	2		0.000	0	0	0.000
21		70.0	1101 S WESTFIELD AVE?	Wye Service (ball of roots / could this be abandoned?)	3		0.000	2	0	0.000
22		71.1		Sag	1		0.000	1	0	0.000
23		78.6	Joint	Offset	3		0.010	20	0	0.010
24		79.2		Crack-Horizontal	3		0.004	5	0	0.004
25		89.7	1101 S WESTFIELD AVE	Break-In Conn (PVC service connected to VCP wye)	2		0.002	0	0	0.002
26		94.6	Joint	Offset	2		0.000	0	0	0.000
27		102.8	Joint	Offset	3		0.010	20	0	0.010
28		114.8	Joint	Offset	2		0.000	0	0	0.000
29		118.7	Joint	Offset	3		0.010	20	0	0.010
30		122.8		Roots	3		0.008	5	8	0.008
31		123.0	Joint	(fairly severe) Offset	3		0.010	20	0	0.010
32		127.1	Joint	Offset	2		0.000	0	0	0.000

Video Inspection Master Report

4/5/2012

10:41 AM

US Structure: 4848-186 9127 W 10TH ST N Date Insp: 4/28/2009 Basin: W06A
 DS Structure: 4848-185 1111 N WESTFIELD ST Dir Televised: Downstream To Upstream

33	151.3	Joint		Offset	3	0.010	20	0	0.010	
34	163.4	Joint		Offset	2	0.000	0	0	0.000	
35	165.1		Wye Service / sealed off		1	0.000	0	0	0.000	
36	165.2	Joint		Offset	3	0.010	20	0	0.010	
37	173.4	Joint		Offset	2	0.000	0	0	0.000	
38	181.4	Joint		Offset	3	0.010	20	0	0.010	
39	189.4	Joint		Offset	2	0.000	0	0	0.000	
40	197.5	Joint		Offset	3	0.010	20	0	0.010	
41	209.5	Joint		Offset	2	0.000	0	0	0.000	
42	217.6	Joint		Offset	3	0.010	20	0	0.010	
(this is a high point / pipe appears to be way lower on both sides of this joint)										
43	221.9	Joint		Offset	2	0.000	0	0	0.000	
44	222.3		Crack-Horizontal		3	0.004	5	0	0.004	
45	225.3	9127 E 10TH ST N		Break-In Conn	4	0.008	60	0	0.008	
(this tap sits in a sag / water level is half way up on the service opening)										
46	225.6			Broken Pipe	4	0.030	78	0	0.030	
47	235.9	9117 E 10TH ST N		MH TAP / Break-In Conn	1	0.001	0	0	0.001	
48	235.9		4848-186 US Manhole		4	0.000	0	0	0.000	

Pipe is "roller coaster" and not on grade. Most every joint is offset.

At 9127 W. 10th Street, there is a small shed on a concrete slab over the top of the sanitary sewer line. The owner has agreed to move his shed, but removal of the small concrete slab will be the responsibility of the Contractor.

The owner of 9127 wanted it noted that he has a sprinkler system in his back yard. 4/2/12 -LML