

STORMWATER DRAIN #379 to serve KISER WEST SECOND ADDITION, Lot 4, Block 1, KISER WEST ADDITION, CITY OF WICHITA, KANSAS

Gary Janzen, P.E. Interim City Engineer
Project Number 468-84775
O.C.A. Number 751510

GENERAL NOTES:

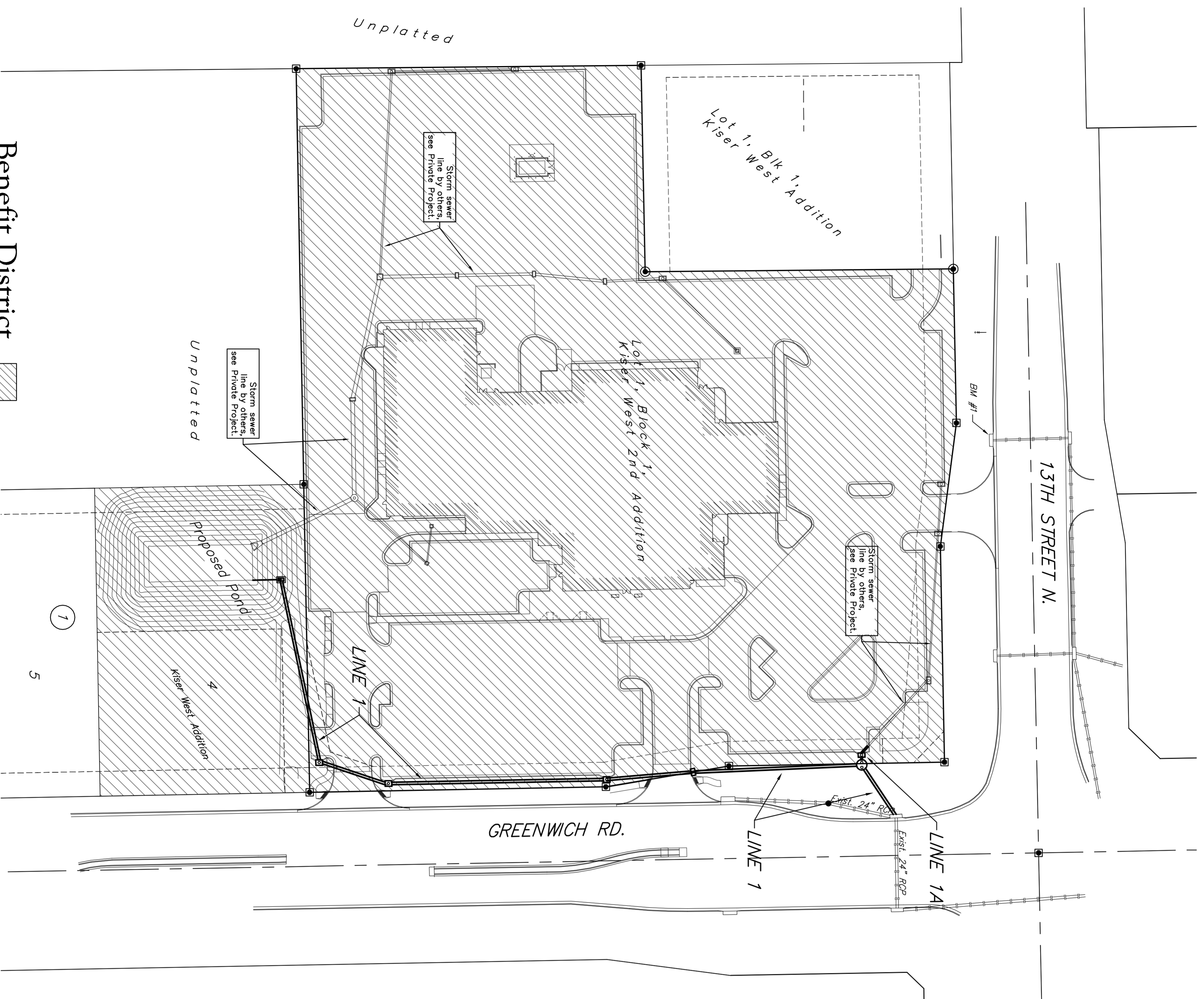
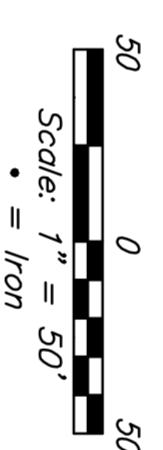
- Contractor will be required to provide notice to utility companies a minimum of forty-eight (48) hours prior to any excavation, as follows:
Kansas One-Call 687-2470
The Contractor must notify the following in case of an emergency:
Cox Communications 262-4270
Kansas Gas Service 1-888-482-4950
Westar Energy 353-8650
Aquila Energy 1-800-303-0337
SBC of Wichita Water Dept. 268-2485
City of Wichita Storm Maint. 268-4024
City of Wichita Storm Sewer Maint. 268-4090
Conoco Phillips Traffic Maint. 268-4034
Southern Star Pipeline Co. 1-877-267-2290
Kinder-Morgan Pipeline Co. 529-6600
1-888-844-5658
- Utility service lines, poles, valve boxes, meters, and etcetera are to be adjusted as necessary by others prior to construction unless the plans specifically call for their adjustment by the Contractor or unless the plans specifically identify a utility to be adjusted by its owner during construction. Existing utilities and their location shall be shown on the plans. The Contractor will be required to work around existing utilities within the right-of-way which do not conflict with proposed construction.
- Rubble from the removal of miscellaneous structures and excess excavation which is to be wasted shall be disposed of on sites to be provided by the Contractor. These sites shall be approved by the Engineer, as to suitability, appearance and site location. Locations, in the opinion of the Engineer, that will leave an unsightly appearance will not be approved. Disposed sites shall be approved by the Engineer. Material shall be disposed of in a flood plain, would require a Kansas State Board of Agriculture permit. Any material dumped in waters of the United States or wetlands is subject to U.S. Corps. of Engineers permitting regulations. Any material buried or stockpiled beyond approved construction limits would require additional archaeological investigations unless buried in a previously approved borrow location.
- All areas disturbed during construction shall be seeded at 300 lbs./acre with Rye Grass immediately following ground pier City of Wichita Specifications. All deposits associated with seeding shall be included in the Lump Sum bid item "Seeding".
- This project is subject to a current Storm Water Pollution Prevention Plan. Contractor shall comply with any requirements as necessary for the site to be in compliance during construction.
- Trees and shrubs in public right-of-way which are in direct conflict with proposed new construction shall be removed by the Contractor with the Engineer's approval. Trees and shrubs which are not in direct conflict with proposed new construction shall be saved and protected from damage.
- The Contractor shall give all property owners and/or tenants of developed property abutting the construction of this project a minimum of ten (10) days notice prior to start of construction.
- The Contractor shall be responsible for preserving property irons. The Contractor will be required to re-establish any property irons which are damaged or destroyed by his construction operations. Such irons shall be re-established by a licensed Land Surveyor in accordance with state laws.
- All existing and proposed erosion control measures, including silt fencing, erosion control mat, straw bales, inlet barriers, and const. entrance shall be maintained throughout construction by the Contractor and until project is accepted by the City of Wichita. The on-site Engineer shall complete weekly reports on the status of erosion control measures. The Contractor shall be required to comply with maintenance and/or replacement of erosion control measures as determined by the on-site Engineer until project is accepted by City of Wichita.

Sheet Index

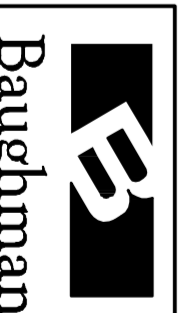
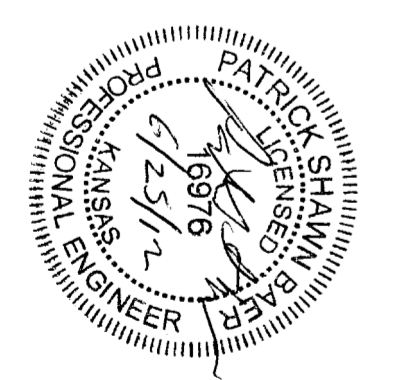
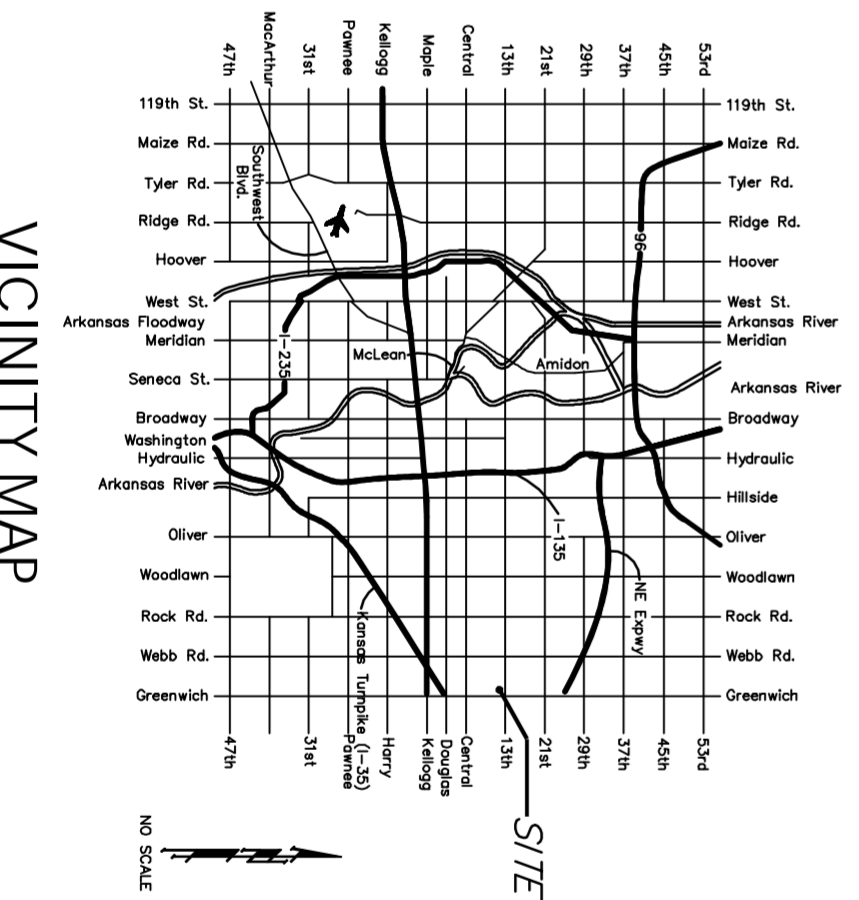
- | | |
|-----------------------------|------|
| Title Sheet | 1 |
| Line 1 & 14 Plan/Profile | 2-3 |
| Pond Cross Sections | 4 |
| Erosion Control Plan | 5 |
| Erosion Control BMP's | 6 |
| HG-8 Details | 7-10 |
| Type 1-A Inlet Detail | 11 |
| Std. Drop Inlet Detail | 12 |
| Inlet Frames & Cover Detail | 13 |
| Copy of Plan | 14 |
| | 15 |
| | 16 |

Benchmarks

Benchmark-1
Chiseled square on cut on rim of curb inlet, 260' west of NE corner of Site.
Elev. = 1388.30 (NAVD 88)



Benefit District



Baughman Company, P.A. 315 Bilt. St. Wichita, KS 67211 P. 316.630.2711 F. 316.630.0149
ENGINEERING | SURVEYING | PLANNING | LANDSCAPE ARCHITECTURE