

Benchmarks

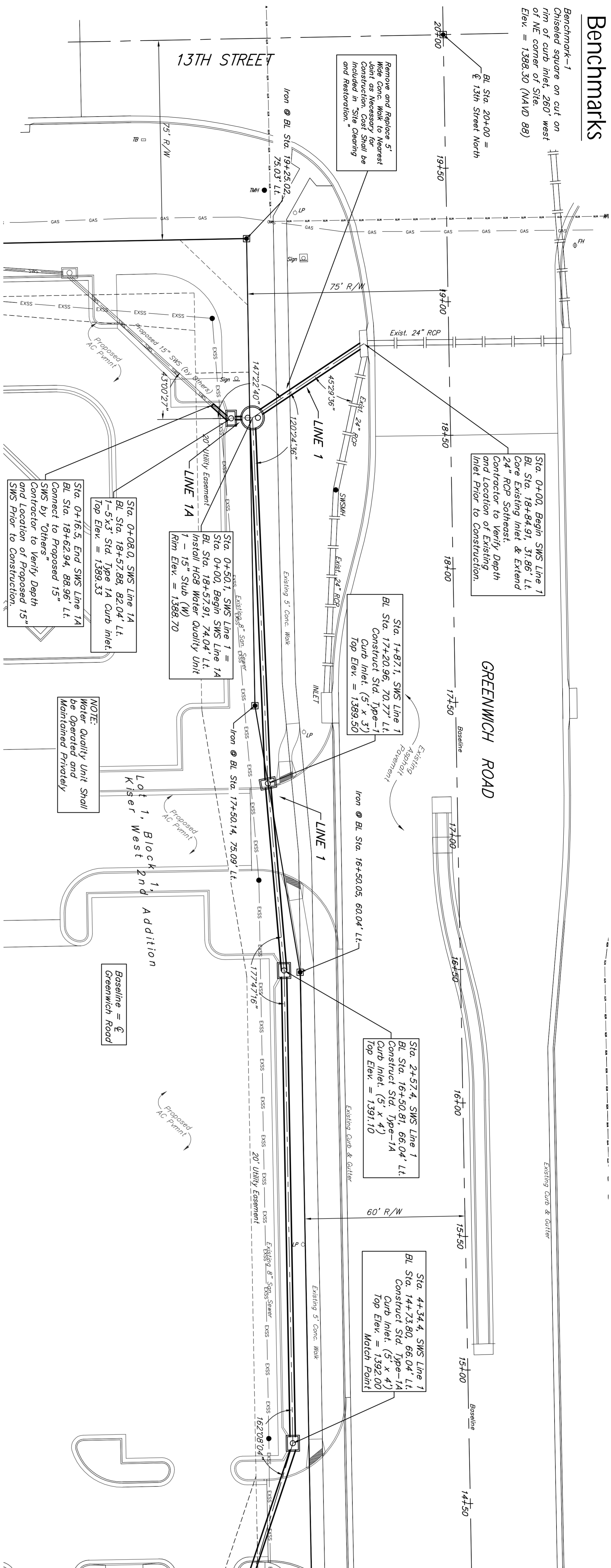
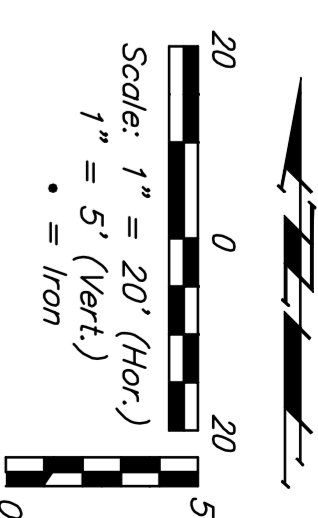
Benchmark-1
Chiseled square on cut on
rim of curb inlet, 260' west
of NE corner of site.
Elev. = 1388.30 (NAVD 88)

BL Sta. 20+00 =
℄ 13th Street North

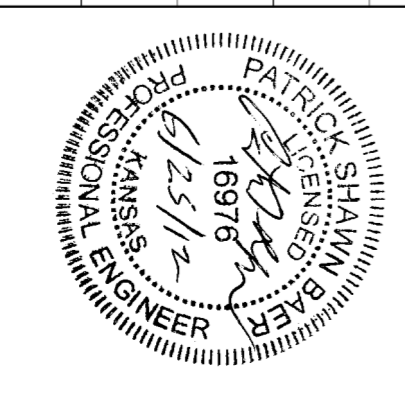
Sta. 0+00, Begin SWS Line 1
BL Sta. 18+84.91, 31.86' Lt.
Core Existing Inlet & Extend
24" RCP Sotheast.
Contractor to Verify Depth
and Location of Existing
Inlet Prior to Construction.

GREENWICH ROAD

Existing Curb & Gutter



1405					
1400					
1395					
1390					
1385					
1380					
1375					
1370					
1365					
0+00	1381.46 = Flow Out (24",E) 1381.50 = Flow In (24",SW)	Sta. 0+00, Begin SWS Line 1 BL Sta. 18+84.91, 31.86' Lt. Core Existing Inlet & Extend 24" RCP Sotheast, Contractor to Verify Depth and Location of Existing Inlet Prior to Construction.			
0+50.1	1381.75 = Flow (24",NE&S) 1381.75 = Stub Flow (15",W)	Sta. 0+50.1, SWS Line 1 = Sta. 0+00, Line 1A BL Sta. 18+57.91, 74.04' Lt. Install HGB Water-Quality Unit 1 - 15" Stub (W) Rim Elev. = 1388.70			
1+00	1381.97 = Flow				
1+50	1382.20 = Flow				
1+87.1	1382.36 = Flow (E&W) 1382.42 = Flow	Sta. 1+87.1, SWS Line 1 BL Sta. 17+20.96, 70.77' Lt. Construct Std. Type-1 Curb Inlet. (5' x 3') Top Elev. = 1389.50			
2+00					
2+50	1382.65 = Flow 1382.78 = Flow Out (N) 1382.88 = Flow In (S)	Sta. 2+57.4, SWS Line 1 BL Sta. 16+50.81, 66.04' Lt. Construct Std. Type-1A Curb Inlet. (5' x 4') Top Elev. = 1391.10			
3+00	1382.92 = Flow				
3+50	1383.09 = Flow				
4+00	1383.26 = Flow				
4+34.4	1383.38 = Flow Out (N) 1383.48 = Flow In (SW)	Sta. 4+34.4, SWS Line 1 BL Sta. 14+73.80, 66.04' Lt. Construct Std. Type-1A Curb Inlet. (5' x 4') Top Elev. = 1392.00 Match Point			
0+00	1381.75 = Flow Out 1381.75 = Flow In 1381.83 = Flow Out 1384.83 = Flow In 1384.91 = Flow (Verify)	Sta. 0+00, Begin SWS Line 1A = Sta. 0+50.1, SWS Line 1 BL Sta. 18+57.91, 74.04' Lt. Sta. 0+08.0, SWS Line 1A BL Sta. 18+57.91, 82.04' Lt. 1-5'x3' Std. Type 1A Curb inlet. Top Elev. = 1389.33 Sta. 0+16.5, End SWS Line 1A BL Sta. 18+62.94, 88.96' Lt. Connect to Proposed 15" SWS by "Others"			
0+08.0					
0+16.5					



B **Baughman**

Stormwater Drain #379

PROJECT NUMBER: 48894715

DESIGN: PSB

APPROVED: JAK

DATE: 6/05/12

SCALE: NOTED

SHEET: 2 OF 16