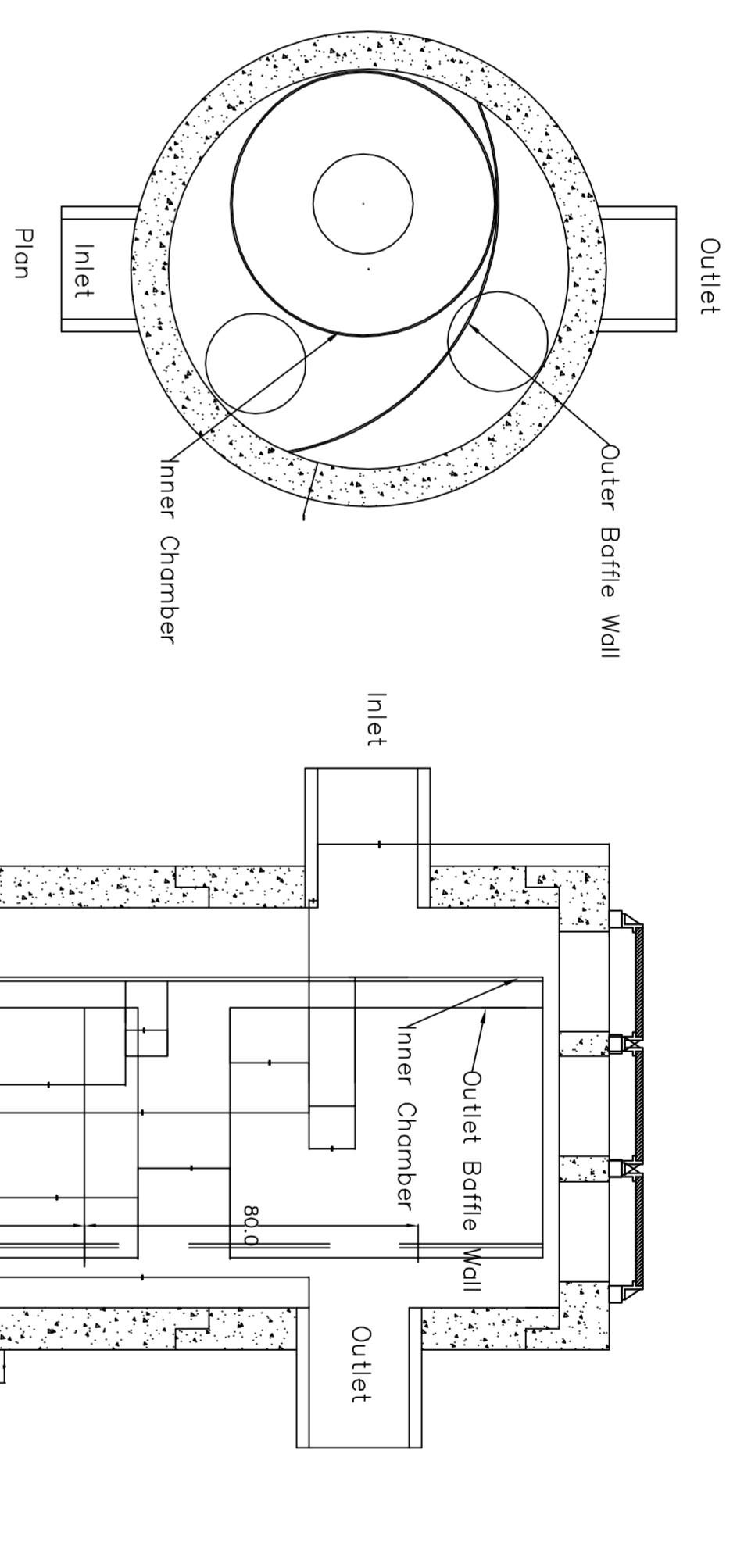
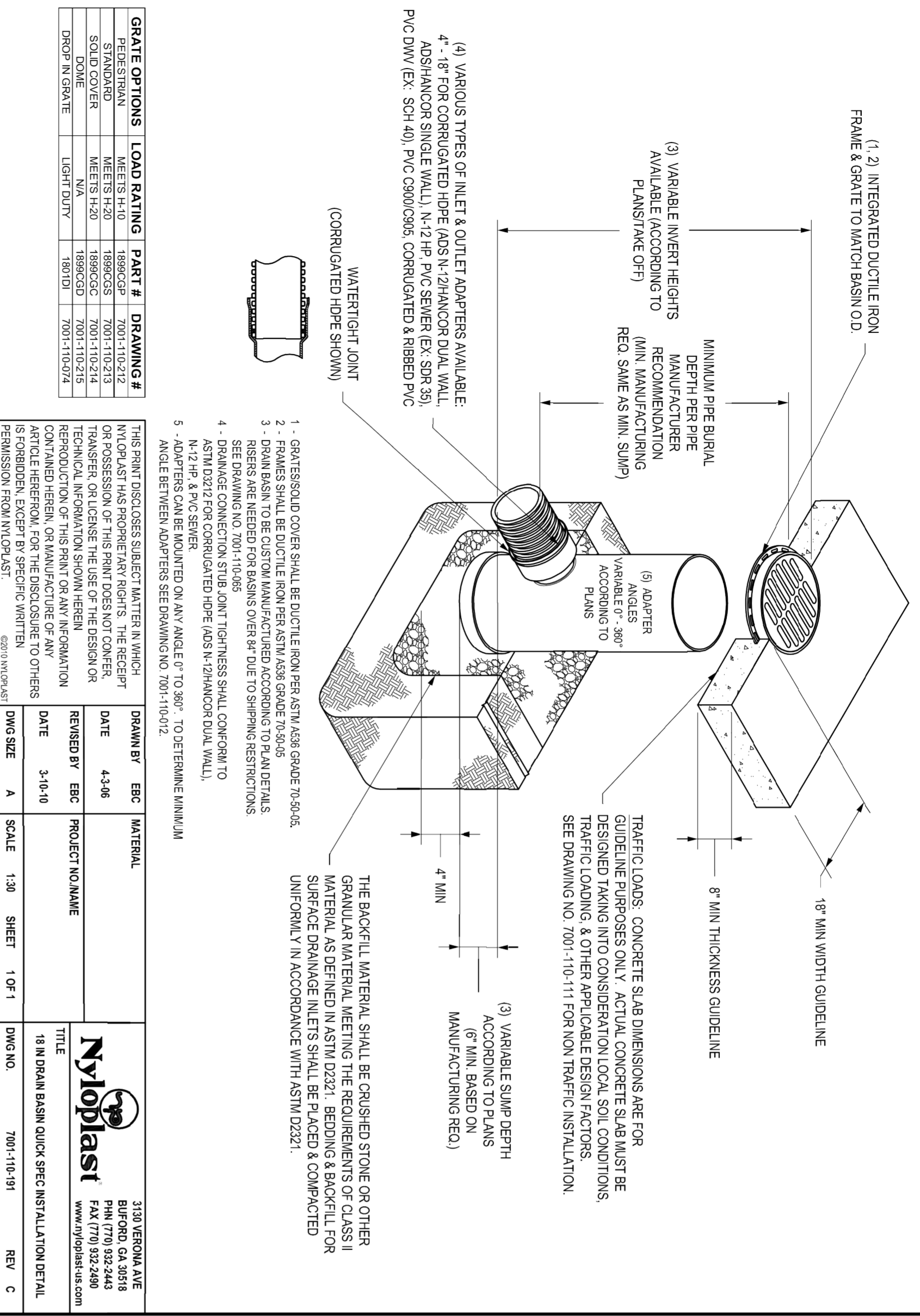


NYLOPLAST 18" DRAIN BASIN: 2818AG \_\_X



NYLOPLAST 24" DRAIN BASIN: 2824AG \_\_X

(1, 2) INTEGRATED DUCTILE IRON FRAME & GRATE TO MATCH BASIN O.D.

(3) VARIABLE INVERT HEIGHTS AVAILABLE (ACCORDING TO PLANS/PAGE OFF)

MINIMUM PIPE BURIAL DEPTH PER PIPE MANUFACTURER RECOMMENDATION (REQ. SAME AS MIN. SWMP)

(5) ADAPTER ACCORDING TO PLANS

TRAFFIC LOADS, CONCRETE SLAB DIMENSIONS ARE FOR GUIDELINE PURPOSES ONLY. ACTUAL CONCRETE SLAB MUST BE DESIGNED TAKING INTO CONSIDERATION LOCAL SOIL CONDITIONS, TRAFFIC LOADS & OTHER APPLICABLE DESIGN FACTORS. SEE DRAWING NO. 7001-110-111 FOR NON TRAFFIC INSTALLATION.

8" MIN THICKNESS GUIDELINE

18" MIN WIDTH GUIDELINE

4" MIN

(3) VARIABLE SWMP DEPTH ACCORDING TO PLANS (6" MIN. BASED ON MANUFACTURING REQ.)

THE BACKFILL MATERIAL SHALL BE CRUSHED STONE OR OTHER GRANULAR MATERIAL MEETING THE REQUIREMENTS OF CLASS II SURFACE DRAINAGE INLETS SHALL BE PLACED & COMPACTED UNIFORMLY IN ACCORDANCE WITH ASTM D2321.

WATERTIGHT JOINT (CORRUGATED HDPE SHOWN)

(4) VARIOUS TYPES OF INLET & OUTLET ADAPTERS AVAILABLE. 4" - 24" FOR CORRUGATED HDPE (ABS N-2/HANCOX DUAL WALL, ASHMANCOR SINGLE WALL), N-1/2 HP PVC SEWER (EX. SPR 35), PVC DWV (EX. SCH 40), PVC C900/C905, CORRUGATED & RIBBED PVC

1 - GRATES/SLID COVER SHALL BE DUCTILE IRON PER ASTM A536 GRADE 70-60-05.  
 2 - FRAMES SHALL BE DUCTILE IRON PER ASTM A536 GRADE 70-60-05.  
 3 - FRAMES SHALL BE DUCTILE IRON PER ASTM A536 GRADE 70-60-05.  
 4 - DRAINAGE CONNECTION STUB JOINT TIGHTNESS SHALL CONFORM TO ASTM D2321 FOR CORRUGATED HDPE (ABS N-2/HANCOX DUAL WALL, N-1/2 HP).  
 5 - ADAPTERS CAN BE MOUNTED ON ANY ANGLE 0° TO 90°. TO DETERMINE MINIMUM ANGLE BETWEEN ADAPTERS SEE DRAWING NO. 7001-110-012.

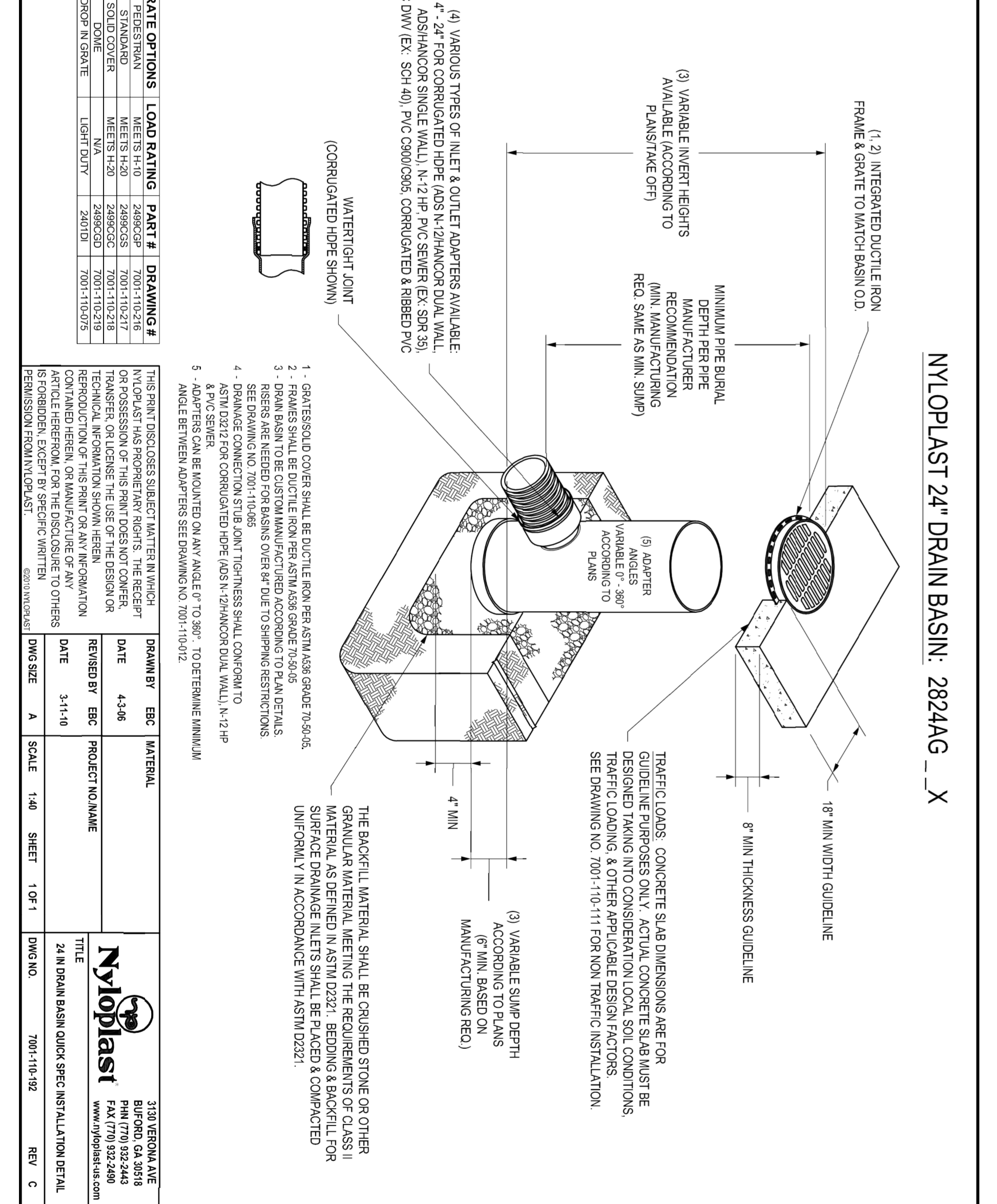
THIS PRINT TISSUES SUBJECT MATTER IN WHICH NYLOPLAST HAS PROPRIETARY RIGHTS. THE RECEIPT OR POSSESSION OF THIS PRINT DOES NOT CONFER TRANSFER OR LICENSE THE USE OF THE DESIGN OR REPRODUCTION OF THIS PRINT OR ANY INFORMATION CONTAINED HEREIN, OR MANUFACTURE OF ANY ARTICLE HEREFROM, FOR THE DISCLOSE TO OTHERS IS FORBIDDEN, EXCEPT BY SPECIFIC WRITTEN PERMISSION FROM NYLOPLAST.

GRATE OPTIONS	LOAD RATING	PART #	DRAWING #
STANDARD	MEETS H-20	Z8962CS	7001-110-017
SOLID COVER	MEETS H-20	Z8962GS	7001-110-213
DOVE	N/A	Z8962GD	7001-110-218
DRIP N GRATE	LIGHT DUTY	Z8962GD	7001-110-219
		Z8962GD	7001-110-215

DRAWN BY	DATE	PROJECT NO	TITLE
EGC	4-3-06		24 IN DRAIN BASIN QUICK SPEC INSTALLATION DETAIL
EGC	3-11-10		

DWG SIZE	SCALE	SHEET	DWG NO.
A	1:40	1 OF 1	7001-110-92

3130 VERONA AVE  
 BURTON CA 94018  
 PHN (770) 932-2440  
 FAX (770) 932-2400  
 www.nyloplast.us.com



**B** Kiser West 2nd Addition  
 Add Inlets  
 Hydrowork Hg8 Detail  
 Stormwater Drain #379

Baumgardner Company, P.A. TRISTAR NORTH-KS017 875-262-7711 875-262-7712  
 BIRMINGHAM | SURVEYING | PLANNING | LANDSCAPE ARCHITECTURE

PROJECT NUMBER	DESIGN	BRAND
4889475	PSB	TST
REVISIONS	APPROVED	DATE
	PSB	6/05/12
	SCALE	VARIABLES
		SHEET
		11 OF 16