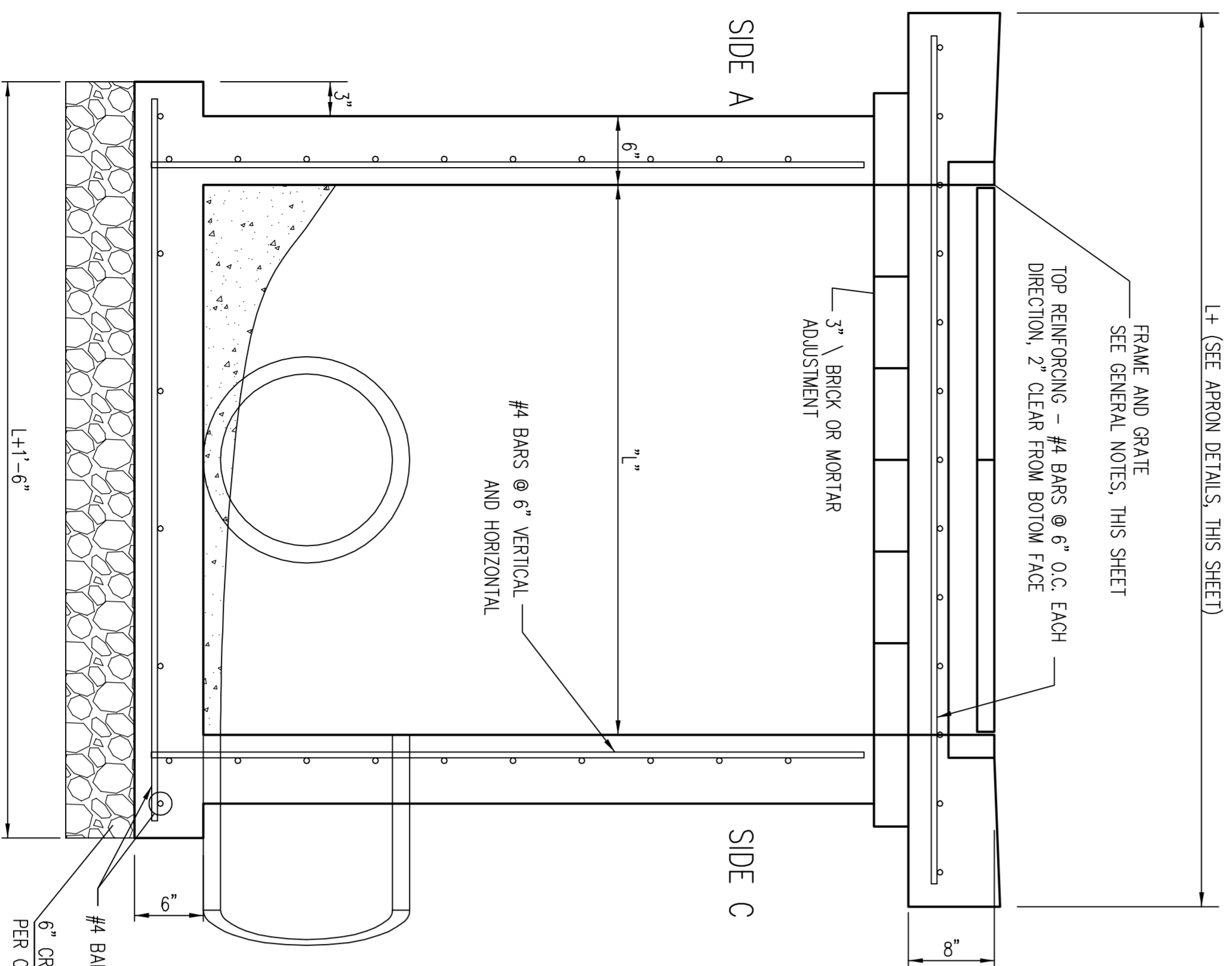
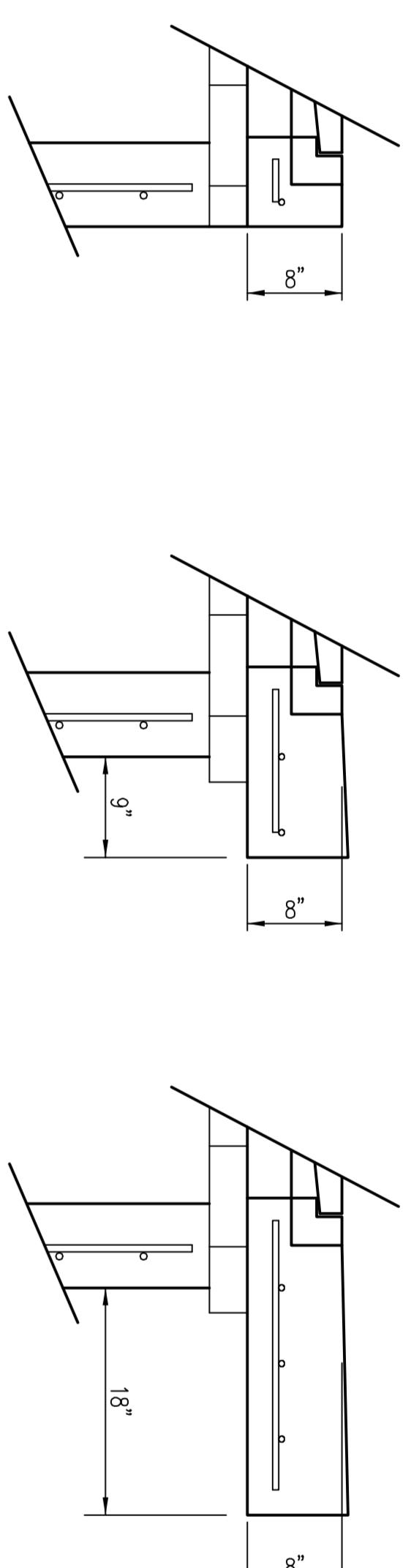


TOP VIEW



SECTION "A-A"



**FLUSH STYLE TOP
NO APRON**

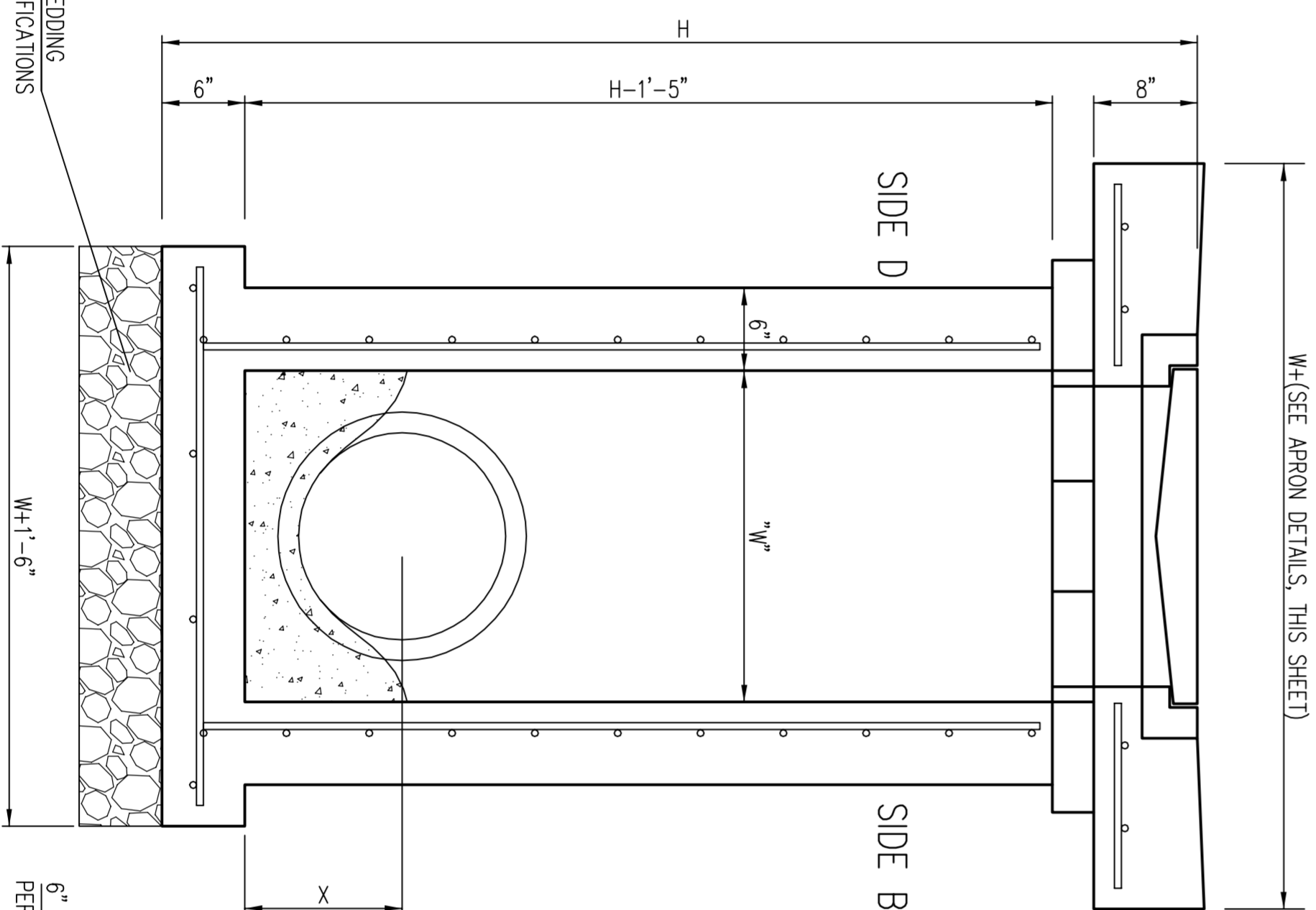
* APRON TO EXTEND ON ALL 4 SIDES OF INLET.
DESIGNER TO DESIGNATE APRON SIZE.

9" APRON

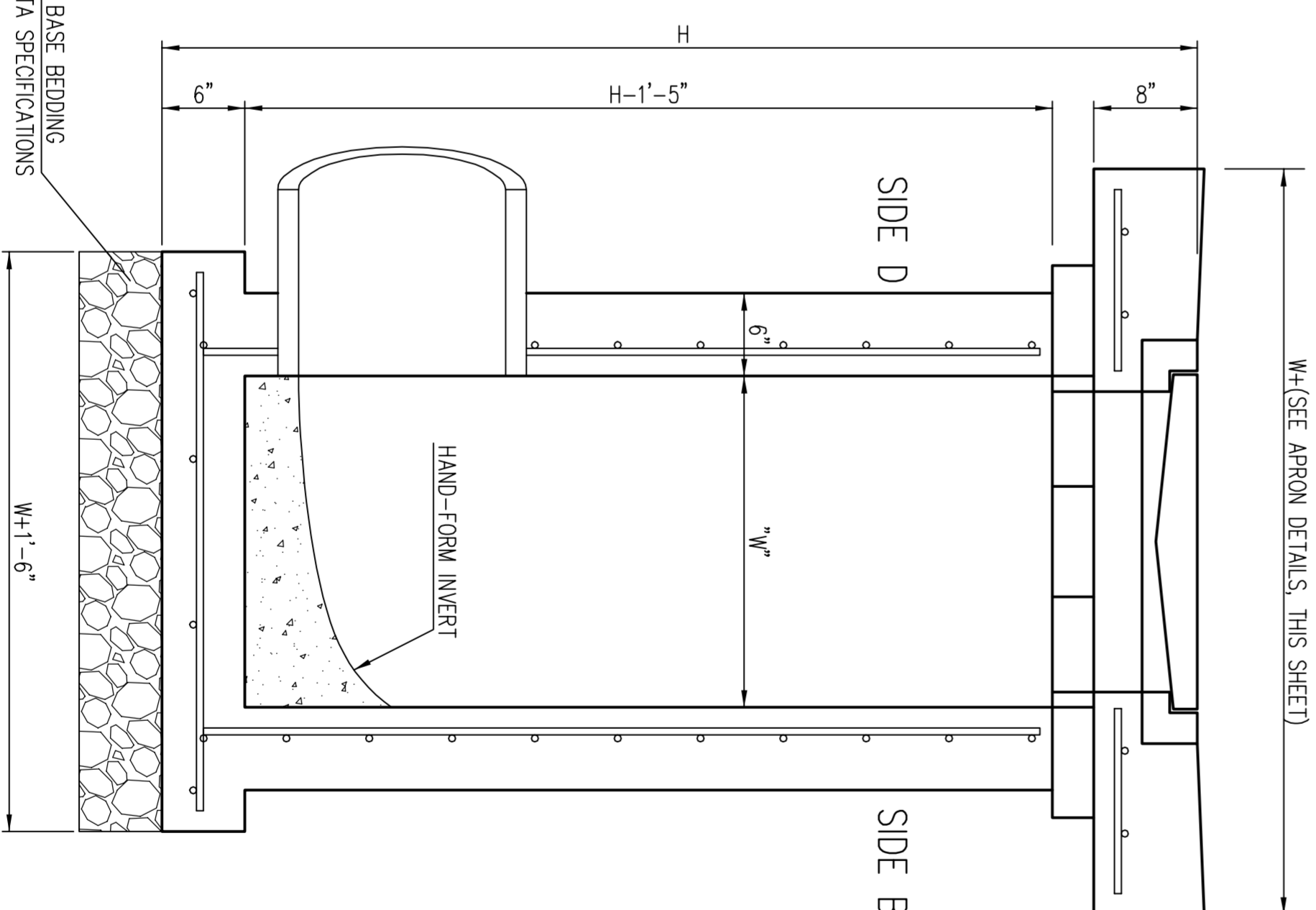
18" APRON

W=2' and L=2' for SINGLE DROP INLET
W=2' and L=4' for DOUBLE DROP INLET

The structure(s) on this detail sheet are designed for HS-20 loading at these specific dimensions only. If larger dimensions are required, the ENGINEER shall provide a project specific structure design for approval by the City Engineer's office.




**SECTION "B-B"
END OUTLET**



**SECTION "B-B"
SIDE OUTLET**

GENERAL NOTES

1. GRATE FRAME TO BE INSTALLED ON THIN MORTAR CUSHION TO INSURE FULL SUPPORT ALONG BRICK CONCRETE USED FOR INLET CONSTRUCTION SHALL CONFORM TO CITY OF WICHITA SPECIFICATIONS FOR CONCRETE PAVEMENT MIX.
2. INLET INVERT SHALL BE SHAPED WITH 8 SACK SAND MIX CONCRETE TO CREATE FLOW CHANNELS AND TO INCREASE HYDRAULIC EFFICIENCY SUCH THAT THE INLET WILL BE SELF CLEANING BETWEEN ALL INLET AND/OR OUTLET PIPES.
3. THE ENDS OF ALL PIPES INSTALLED IN INLETS SHALL BE CUT OFF FLUSH WITH THE INSIDE FACE OF THE INLET WALL.
4. INLET FRAME AND GRATE TO BE DEETER #2433, EIW #5391-21 OR APPROVED EQUAL FOR 2'x2' SINGLE DROP INLET AND DEETER #2434, EIW #5391 23 OR APPROVED EQUAL FOR 2'x4' DOUBLE DROP INLET.
5. CONTRACTOR SHALL REMOVE LIFTING HOOKS AFTER INSTALLATION, RECESSES IN INLET WALL SHALL BE GROUTED FLUSH TO THE INLET WALL WITH HYDRAULIC CEMENT AFTER THE INLET IS IN PLACE. LIFTING HOLES THRU THE INLET WALL WILL NOT BE ACCEPTED.

 CITY OF WICHITA PUBLIC WORKS & UTILITIES ENGINEERING DIVISION		SINGLE/DOUBLE DROP INLET	
CITY ENGINEER Gary Janzen, P.E. <i>Interim City Engineer</i>		REVISIONS 05/10/2011 - 03	
PROJECT NUMBER 468-84775	O&A NUMBER _____	DESIGN DATE 6/05/12	DRAWN BY Staff
CITY ENGINEER'S OFFICE CITY HALL - SEVENTH FLOOR 435 NORTH MAIN STREET WICHITA, KANSAS 67202-1620 (316) 268-4501		SHEET 14 of 16	PROJECT E:\Projects\Standard (CNC)_11-10-67721\SMS PETITION (12-04-6743)\Engineering\CNC PETITION.dwg-SM-201