

Central Ave

4605 E.  
Central

4729 E.  
Central

442

MH 5747-494  
Remove and Replace MH Frame & Cover  
442 N. Pershing

MH 5747-493  
Remove and Replace MH Frame & Cover  
414 N. Pershing

414

Pershing

Dellrose

Oliver

402

3rd Street North



**SITE 7**

Sheet 20 of 32



346

E CENTRAL AVE

496497

495

477

N DELLROSE AVE

N OLIVER AVE

N PERSHING AVE

542

060

476

494

541

475

493

540

492

474

E 3RD ST N

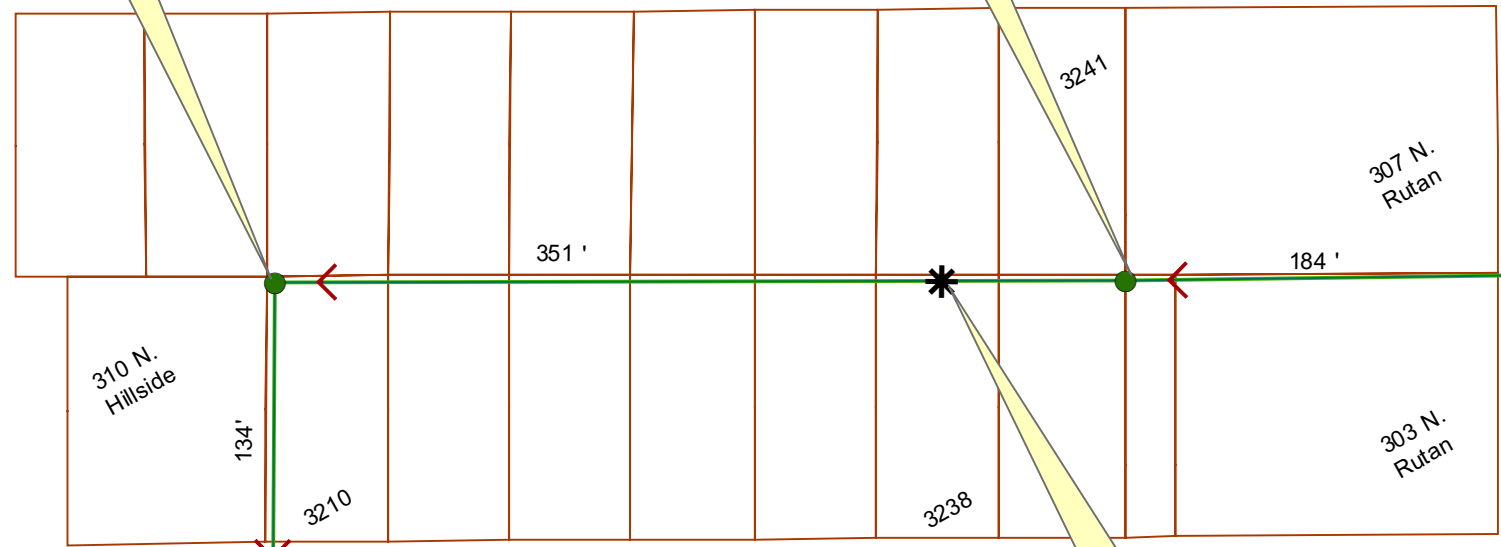
N

MH 5747-615  
Remove and Replace MH Frame & Cover  
3210 E. 2nd Street N.  
Approx MH depth = 6.7 ft

MH 5747-618  
3241 E. Chatfield  
Estimated MH depth = 8.5 ft

Hillside

Chatfield



Point Repair: Remove and replace 18 lf of pipe, from existing PVC located at 69 ft west of MH 5747-618, to a point 87 ft west of MH 5747-618. Includes 4" tap replacement for 3238 E. 2nd St. N. (See tv log)

Estimated 20 lf Silt Fence

**SITE 8**

Sheet 22 of 32

2nd St. N.

Holyoke

Rutan Ave.





703

713CO

N HOLYOKE PL

E CHATFIELD PL

N HILLSIDE AVE

615

3241

618

N RUTAN AVE

3210

3238

614

613

E 2ND ST N

N HOLYOKE AVE

640



# Video Inspection Master Report

3/30/2012

7:53 AM

US Structure: 5747-618                      3241 E CHATTFIELD DR                      Date Insp: 6/07/2012                      Basin: EC02A  
 DS Structure: 5747-615                      3210 E 2ND ST                                      Dir Televised: Upstream to Downstream

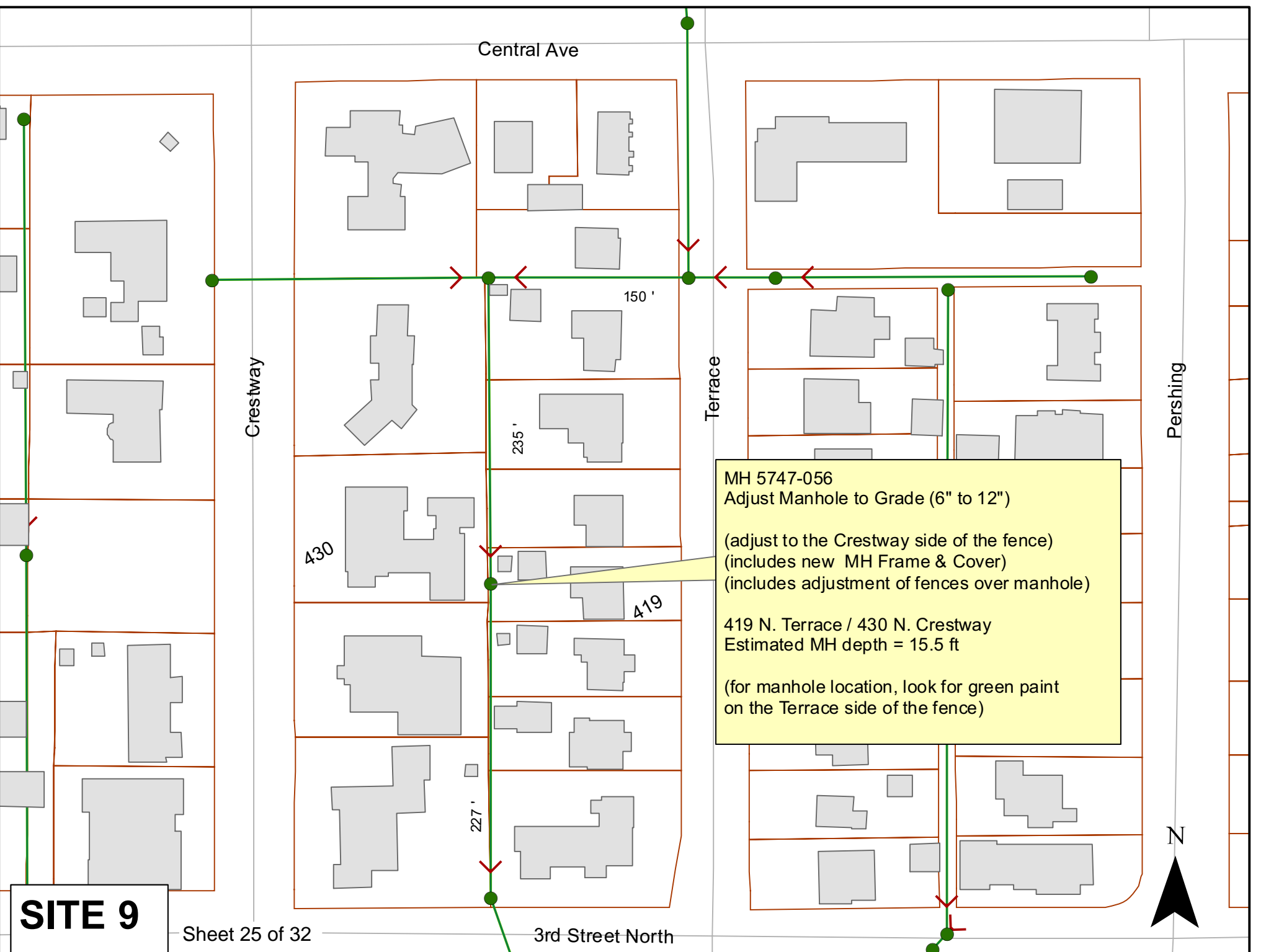
**Pipe Information**

Project No. : C-118                      Dia: 8                      Material: VCP                      Length: 351.0                      Slope: 0.400

Obs. #	VTR Counter	Distance	Location	Description	Rating	Obsrvd (gpm)	Ratings			Remain (gpm)
							Est. (gpm)	Struct	Clean	
1		0.0		5747-618 US Manhole						
2		14.5		Sealed off wye						
3		15.9		Sealed off wye						
4		36.8		Tap for 3242 E. 2 <sup>nd</sup> / roots						
5		39.7		Sealed off wye						
6		41.7		Sealed off wye						
7		42.4		3241 E. Chatfield / roots						
8		44.4		cracked all around, including Invert / broken pipe						
9		46.6		3242 E. 2 <sup>nd</sup> / cavity / this could be sealed off?					<u>needs tested</u>	
There is a large tree here and not a good place to excavate. If this is not an active connection, we can line through this with CIPP.										
10		64.5		Broken pipe						
11		66.0		Broken pipe						
12		66.0		PVC begins						
13		67.9		3229 E. Chatfield / PVC tap						
14		<b>69.4</b>		<b>PVC ends</b>						
15		<b>69.7</b>		<b>Sealed off wye</b>						
16		<b>71.0</b>		<b>Broken pipe</b>						
17		<b>77.6</b>		<b>Tap for 3238 E. 2<sup>nd</sup> / pipe missing / dirt showing / packed with roots</b>						
18		<b>78.4</b>		<b>Broken pipe</b>						
<b><u>NEEDS REPLACED FROM PVC AT 69 FEET TO 87 FEET</u></b>										
19		92.6		Sealed off wye						
20		95.4		Sealed off wye						
21		101.7		Roots						
22		109.3		Roots						
23		115.8		Sealed off wye						
24		118.4		Sealed off wye						
25		119.3		Tap for 3225 E. Chatfield / roots						



Remainder of tv log not included in this project.



**SITE 9**

Sheet 25 of 32

MH 5747-056  
 Adjust Manhole to Grade (6" to 12")  
 (adjust to the Crestway side of the fence)  
 (includes new MH Frame & Cover)  
 (includes adjustment of fences over manhole)  
 419 N. Terrace / 430 N. Crestway  
 Estimated MH depth = 15.5 ft  
 (for manhole location, look for green paint on the Terrace side of the fence)



N CRESTWAY AVE

430

056

419

N TERRACE DR

