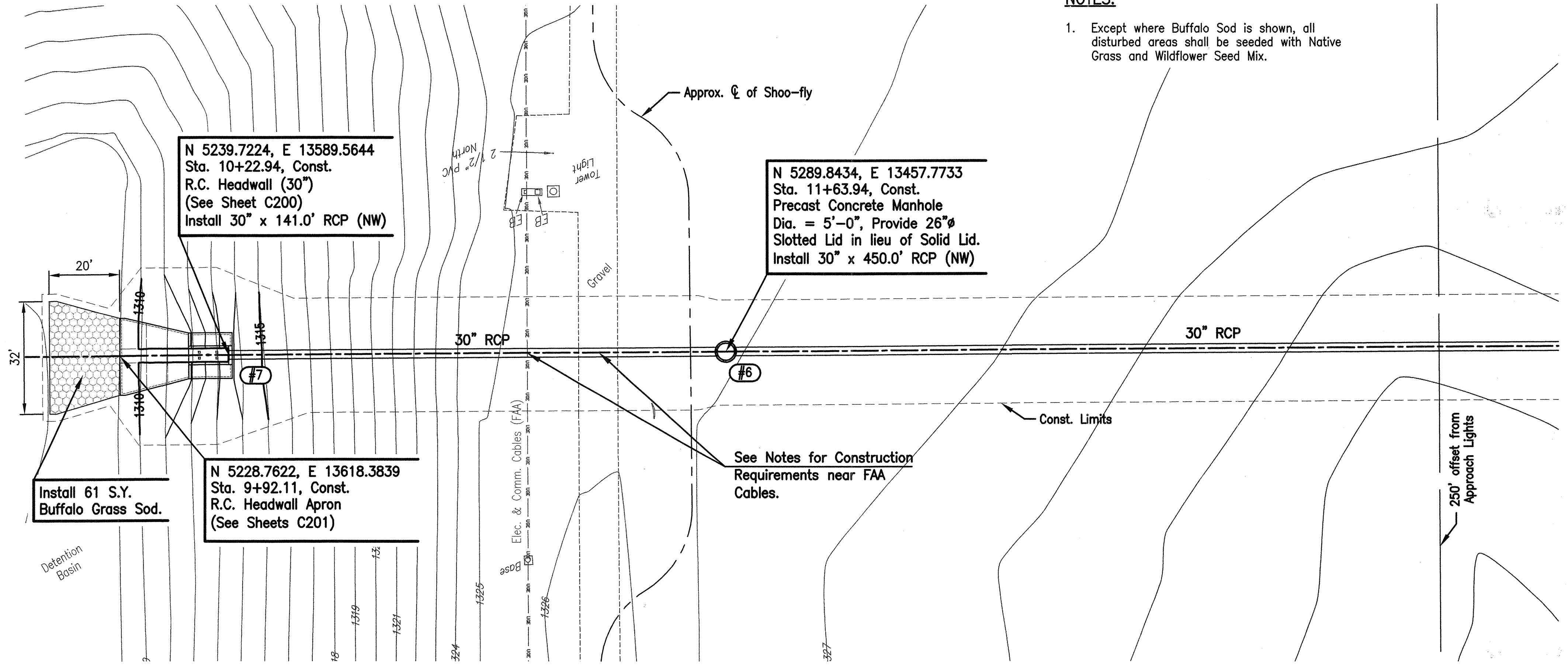


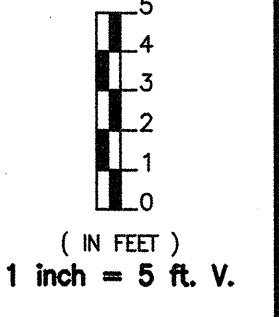
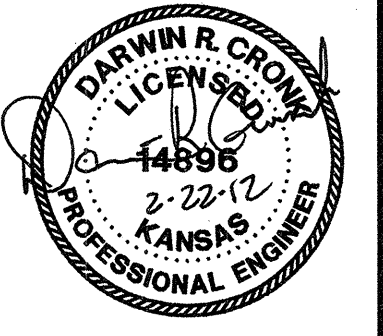
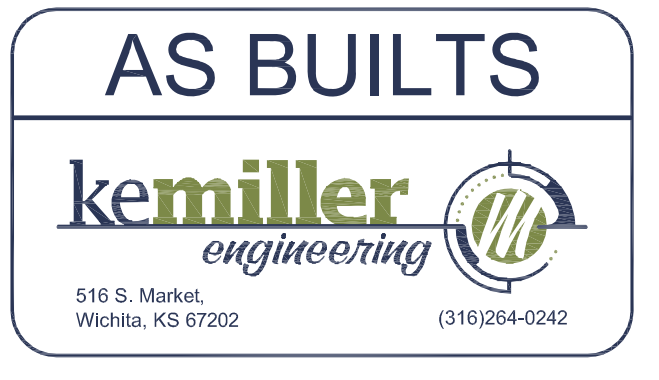
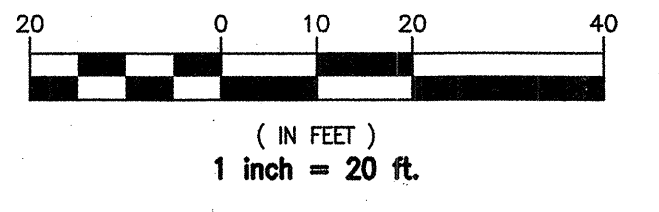
**NOTES:**

- Contractor shall ensure constant use of existing gravel road by constructing a gravel or millings temporary shoo-fly around his construction. Shoo-fly shall be removed after gravel road has been restored to pre-construction conditions. All work shall be Subsidiary to Storm Sewer Installation.
- Contractor shall provide 72 hours notice to Tom Lawson (FAA) at 941-1268 to request locates for pot-holing (by Contractor) of FAA cables. Provide 72 hours notice to Tom Lawson prior to excavating within three feet of FAA cables. FAA staff must be present during excavation and backfilling.
- Contractor shall notify Tom Lawson of next days work when working within 100 feet of FAA equipment or cables.
- Contractor shall support and protect cable(s) across trench by means and methods acceptable to the FAA and as necessary to ensure the integrity of the cable. Provide details for Review at least 21 days prior to beginning excavation.
- No work or Contractor activity will be permitted within 250' of the Approach Light Lane  $\phi$  in the following conditions: 1) During inclement weather when the Approach Lights are in use. 2) From 1/2 hour before sunset to 1/2 hour after sunrise.
- Any damage to the communications cable will require that the cable be replaced from end of cable segment to end of cable segment (no splices) at no cost to the Owner.
- Where Construction vehicles cross FAA cables, the Contractor shall place steel plates or equivalent protective measures over the cables to protect them from damage.



**NOTES:**

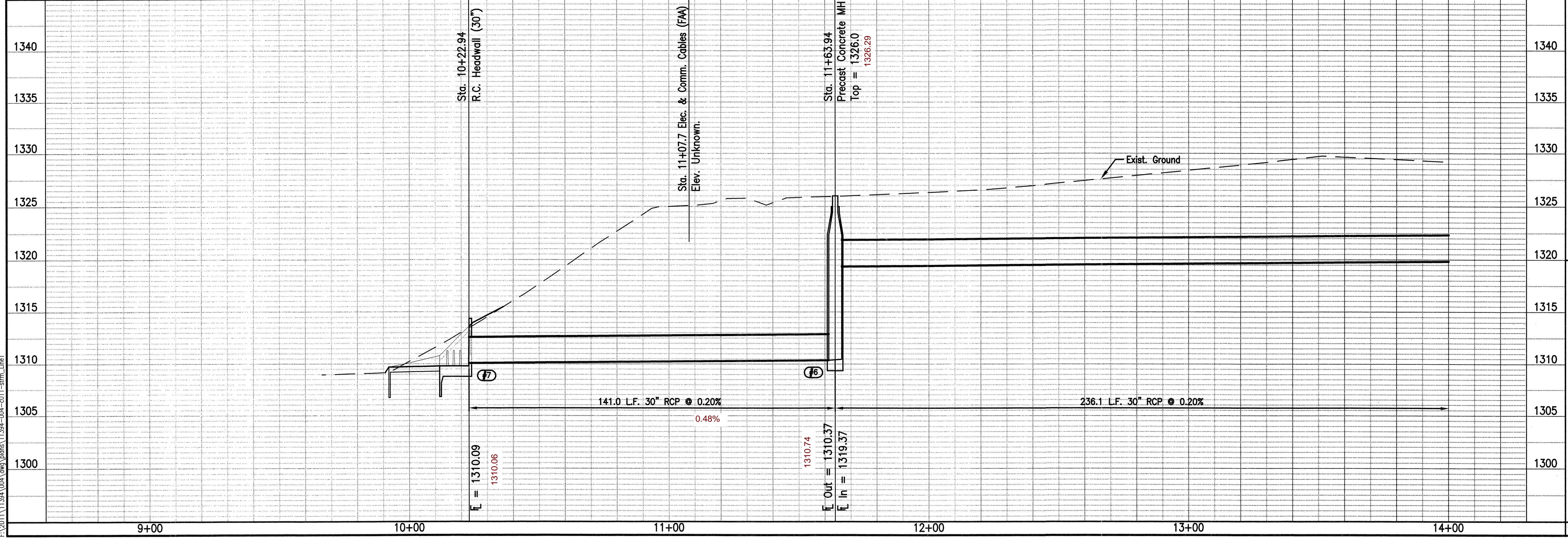
- Except where Buffalo Sod is shown, all disturbed areas shall be seeded with Native Grass and Wildflower Seed Mix.



DATE	BY	CHECKED	CHECKED
PLAN			

DATE	BY	CHECKED	CHECKED
PROFILE			

**SWS LINE NO. 1**



THE WICHITA AIRPORT AUTHORITY  
MID-CONTINENT AIRPORT  
**STORM SEWER LINE 1**  
LEARNJET PARKING LOTS

Professional Engineering Consultants, P.A.  
303 S. TOPPEKA • WICHITA, KANSAS 67202  
316-262-2991 • FAX 316-262-3003

Designed By: DAR  
Drawn By: DUL  
Job No. 11394-004  
Date: Oct. 2011

Saved 02-15-2012 12:46:31 PM by DUL  
Plot Scale 1:1 02-22-2012 11:07:14 AM by DUL L. McDONALD  
P:\2011\11394\004\Drawings\11394-004-C011-stm.dwg