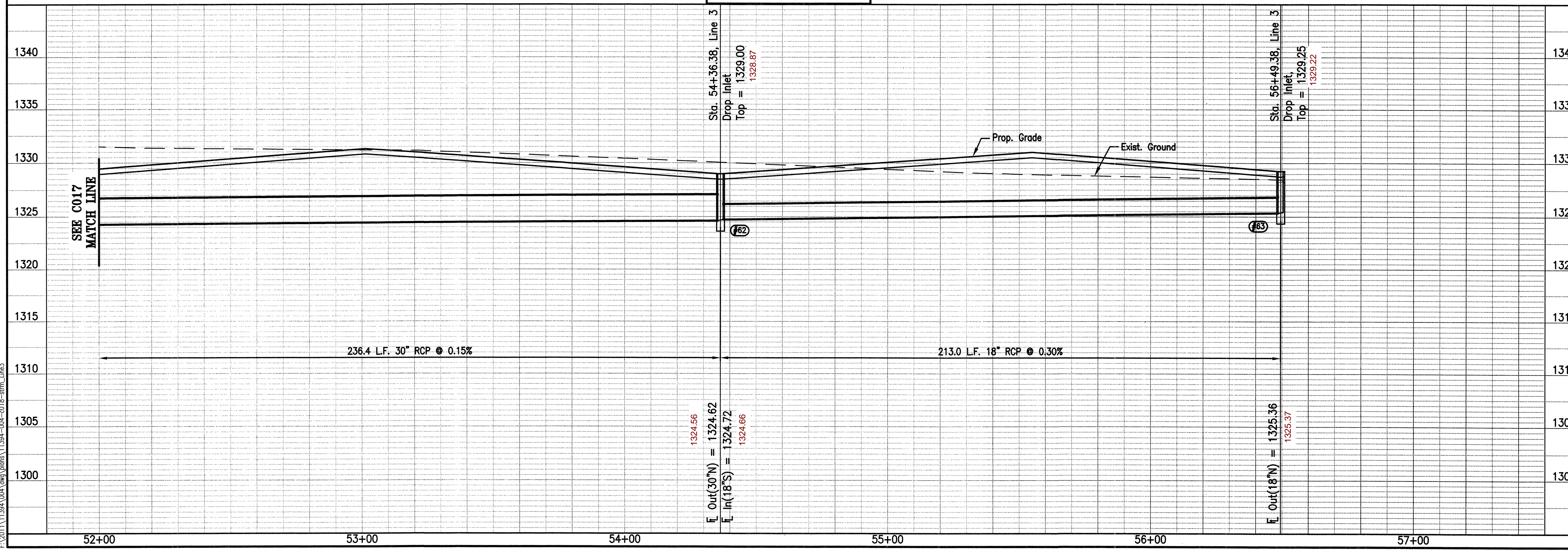


N 4487.9781, E 10305.2229  
Sta. 54+36.38, Line 3,  
Const. Standard Double Drop  
Inlet, L = 4', W = 2'.  
Install 18"x213.0 LF RCP(S).

N 4274.9832, E 10303.7403  
Sta. 56+49.38, Line 3, Const.  
Standard Double Drop Inlet,  
L = 4', W = 2'.

**SWS LINE NO. 3**



THE WICHITA AIRPORT AUTHORITY  
MID-CONTINENT AIRPORT  
**STORM SEWER LINE 3**  
LEARNET PARKING LOTS

Professional Engineering Consultants, P.A.  
303 S. TOPEKA • WICHITA, KANSAS 67202  
316-262-2691 • FAX 316-262-3003  
Designed By: DAR  
Drawn By: DUL  
Job No. 11394-004  
Date: Oct. 2011

PLAN	CHECKED	CHECKED	BY	DATE

PROFILE	CHECKED	CHECKED	BY	DATE

Saved 01-13-2012 11:59:12 AM by DMS  
Plot Scale 1:1 02-22-2012 11:04:29 AM by GJEE L. MCDONALD  
F:\2011\1394\004\eng\plans\11394-004-c018-stm.ln3