

# STREET PAVING FOR WOODRIDGE WITH INCIDENTAL SWS IMPROVEMENTS to serve **WOODS NORTH 3RD ADD. - PH. I**

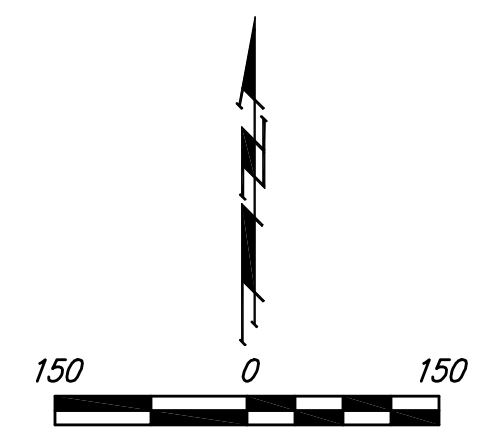
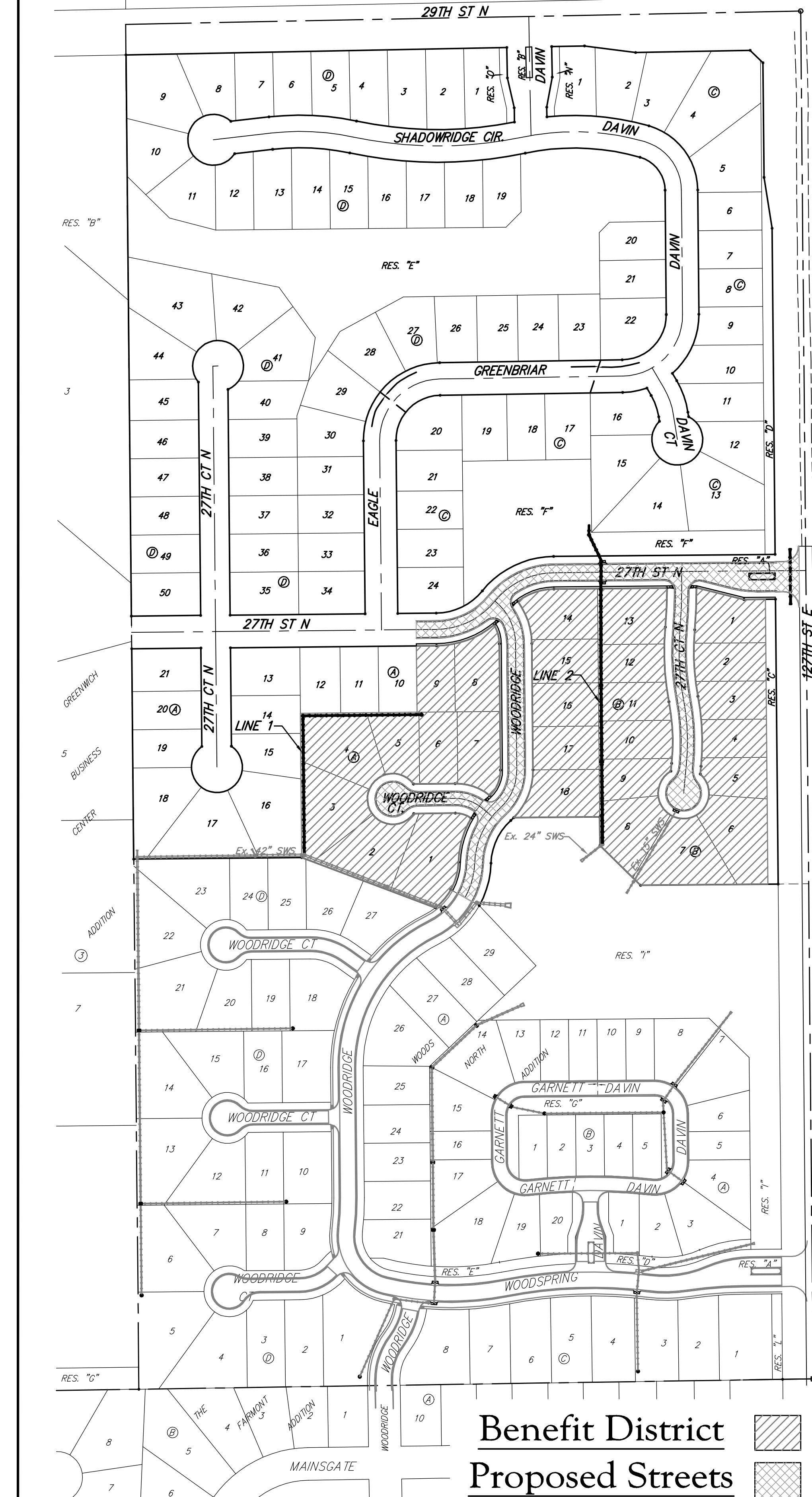
Woodridge from the south line of the plat, north to the southline of 27th St. N.  
27th St. N. from the west line of Lot 9, Block A, east to the east line of the plat  
Woodridge Ct. from the west line of Woodridge west to and including the cul-de-sac  
27th Ct. N., (Lots 1 through 13, Block B) from the south line of 27th St. N.  
south to and including the cul-de-sac

## CITY OF WICHITA, KANSAS

Gary Janzen, P.E. Interim City Engineer  
Project Number  
472-85046  
O.C.A. Number  
766281

### GENERAL NOTES:

- Contractor will be required to provide notice to utility companies a minimum of seventy-two (72) hours prior to any excavation, as follows:  
  
Kansas One-Call 687-2470  
  
The Contractor must notify the following in case of an emergency:  
  
Cox Communications 262-4270  
Kansas Gas Service 1-888-482-4990  
Westar Energy 383-8850  
Black Hills Energy 1-800-303-0357  
AT&T 268-2245  
City of Wichita Water Dept. 268-4563  
City of Wichita Sewer Maint. 268-4024  
City of Wichita Storm Sewer Maint. 268-4090  
City of Wichita Traffic Maint. 268-4034  
Conoco Phillips Pipeline Co. 1-877-267-2290  
Southern Star Pipeline Co. 529-6600  
Kinder-Morgan Pipeline Co. 1-888-844-5658
- Utility service lines, poles, valve boxes, meters, and etcetera are to be adjusted as necessary by others prior to construction unless the plans specifically call for their adjustment by the Contractor or unless the plans specifically identify a utility to be adjusted by its owner during construction. Existing utilities and their location, as shown on the plans, represent the best information obtainable for design. The Contractor will be required to work around existing utilities within the right-of-way which do not conflict with proposed construction.
- Rubble from the removal of miscellaneous structures and excess excavation which is to be wasted shall be disposed of on sites to be provided by the Contractor. These sites shall be approved by the Engineer as to suitability, appearance and site location. Locations, in the opinion of the Engineer, that will leave an unsightly appearance will not be approved. All disposal sites must be approved by the Kansas Department of Health and Environment. Material either stockpiled or disposed of in a flood plain would require a Kansas State Board of Agriculture permit. Any material buried in waters of the United States or wetlands is subject to U.S. Corps. of Engineers permitting regulations. Any material buried or stockpiled beyond approved construction limits would require additional archaeological investigations unless buried in a previously approved borrow location.
- Trees and shrubs in public right-of-way which are in direct conflict with proposed new construction shall be removed by the Contractor with the Engineer's approval. Trees and shrubs which are not in direct conflict with proposed new construction shall be saved and protected from damage.
- The Contractor shall give all property owners and/or tenants of developed property abutting the construction of this project a minimum of ten (10) days notice prior to start of construction.
- The Contractor shall be responsible for preserving property irons. The Contractor will be required to re-establish any property irons which are damaged or destroyed by his construction operations. Such irons shall be re-established by a licensed land surveyor in accordance with state laws.
- All existing and proposed erosion control measures including silt fencing, erosion control mat, straw bales, inlet barriers, and const. entrance shall be maintained throughout construction by the contractor and until project is accepted by the City of Wichita. The on-site engineer shall complete weekly reports on the status of erosion control measures. The contractor shall be required to comply with maintenance and/or replacement of erosion control measures as determined by the on-site engineer until project is accepted by City of Wichita. Maintenance and/or replacement of erosion control measures to be paid by L.S. bid item "Maintain Existing BMP's".
- A saw cut of at least one-half the depth of existing surface courses or one-fourth the depth of the existing total pavement thickness shall be provided at locations where proposed construction abuts the existing surface course or pavement for which partial removal of that surface or pavement is required. Sawn joint to facilitate removal within three (3) feet of existing joints will not be permitted and for such instances the limits of removal shall extend to the existing joint. Such saw cuts will not be paid for directly and this cost shall be considered as subsidiary to the removal of the surface or pavement.
- The contractor shall adjust valve boxes as necessary to match proposed grade. Cost to be included in bid item, "Site Restoration."
- Limits of earthwork shall match existing ground elevations at the right-of-way line unless otherwise noted on the plans with a new finished grade elevation. When a new finished grade elevation is shown, the earthwork shall extend one foot beyond the right-of-way line and then slope up or down using permissible slopes to match the existing ground surface.
- All areas in 127th street R/W disturbed shall be seeded and mulched as follows: (Permanent Seeding)  
Seed: Kansas Premium Fescue Blend: 8 lbs./1000 sq. ft.  
Annual Rye Grass: 4 lbs./1000 sq. ft.  
Mulch: Prairie Hay: 2 tons/acre  
Fertilizer: 12-24-12: 350 lbs./acre  
All other disturbed areas are to be seeded as follows: (Temporary seeding)  
Seed: Rye grass (PLS)--5 lbs./1000 Sq. Ft.  
All costs associated with seeding, mulching, and fertilizing shall be included in bid item "Project Seeding." All seeding operations shall conform to City of Wichita Standard Specifications.
- The developer for this project is Ritchie Development Corporation, Kevin Mullen, President (316)684-7300.
- Coordinate construction with project 472-84654, Street Paving for 127th Street East.



YOUNG & RUBICAM ARCHITECTS, P.A.  
200 N. WILSON ST., SUITE 200  
WICHITA, KS 67202-3812

YOUNG & RUBICAM ARCHITECTS, P.A.  
200 N. WILSON ST., SUITE 200  
WICHITA, KS 67202-3812

YOUNG & RUBICAM ARCHITECTS, P.A.  
200 N. WILSON ST., SUITE 200  
WICHITA, KS 67202-3812

YOUNG & RUBICAM ARCHITECTS, P.A.  
200 N. WILSON ST., SUITE 200  
WICHITA, KS 67202-3812

YOUNG & RUBICAM ARCHITECTS, P.A.  
200 N. WILSON ST., SUITE 200  
WICHITA, KS 67202-3812

YOUNG & RUBICAM ARCHITECTS, P.A.  
200 N. WILSON ST., SUITE 200  
WICHITA, KS 67202-3812

**Project Earthwork Totals**  
Street R/W:  
Excavation = 4,222 C.Y.  
Loose Fill = 924 C.Y.  
Compacted Fill = 550 C.Y.  
  
Mass Grading (Not Incl. Street R/W):  
Excavation = 7,732 C.Y.  
Fill = 7,118 C.Y.  
  
Total Project Length  
2,063 L.F. = 0.39 Miles

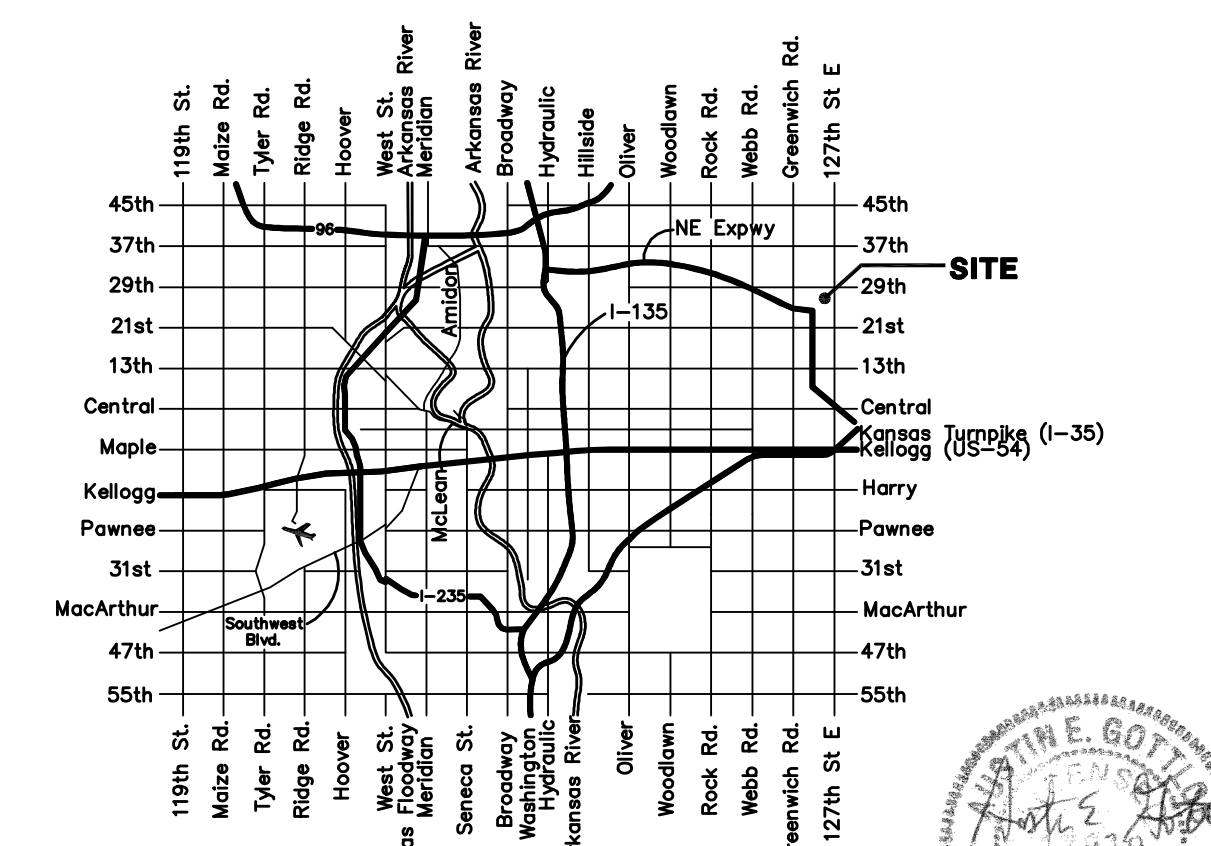
**Benefit District**  
**Proposed Streets**

### Benchmarks

- BM #1:  
RR Spike in CATV Pole, 85' east and 77' south of SE corner of Woods North 3rd Addition.  
Elev. = 1383.00 NAVD88
- BM #2:  
"□" cut at centerline of inlet adjacent to Lot 29, Block A, Woods North 2nd Addition.  
Elev. = 1387.12 NAVD88
- BM #3:  
Cross cut on north end of west headwall 137.5' south & 12' west of the intersection of 29th St N & 127th St E.  
ELEV. = 1382.45 NAVD88

### Sheet Index

Title Sheet	1
35' Pavement Detail	2
29' Pavement Detail	3
Curb & Gutter Detail	4
Sign Detail	5
Miscellaneous Details	6
Entrance Detail	7
27th Street North	8-9
27th Court North	10
Woodridge	11-12
Woodridge Ct.	13
SWS Line 1	14-15
SWS Line 2	16-17
Std. Type 1A Double Inlet Detail	18
Special Yard Inlet Detail	19
Standard Drop Inlet Detail	20
Mass Grading Plan	21
Mass Grading Details	22
Erosion Control BMP Details	23-26
Coordinate Sheet	27
Street X-Sections	28-34
Copy of Plat	35



### Vicinity Map



Baughman Company, P.A. 315 Ellis St. Wichita, KS 67211 P 316-262-7271 F 316-262-0149  
ENGINEERING | SURVEYING | PLANNING | LANDSCAPE ARCHITECTURE

