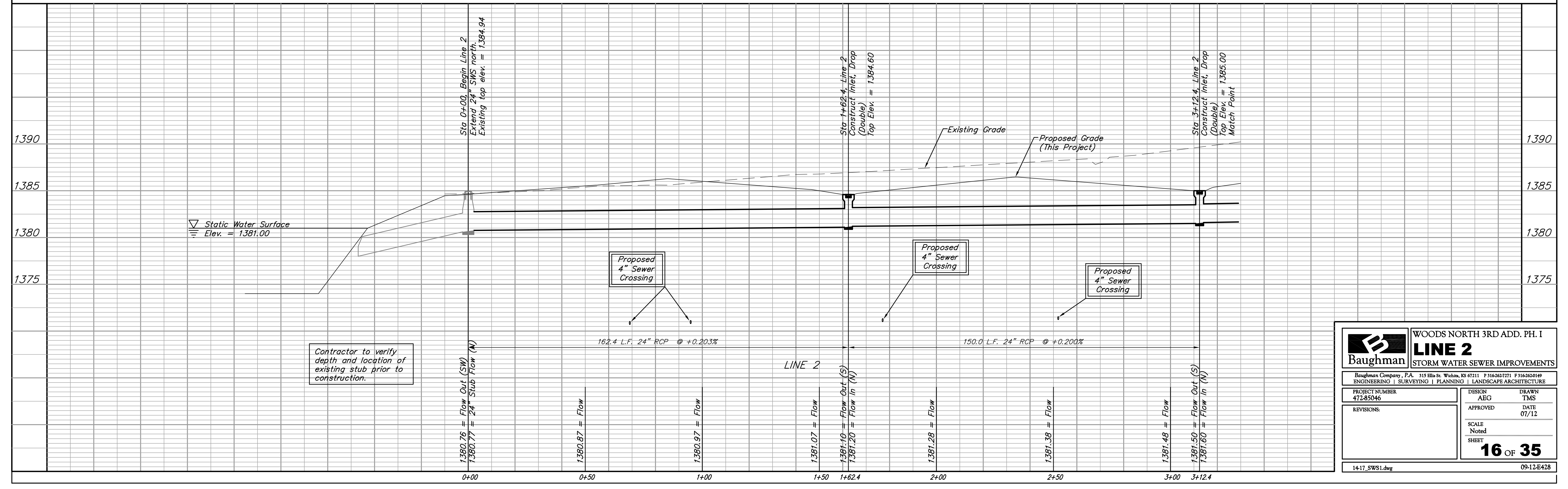
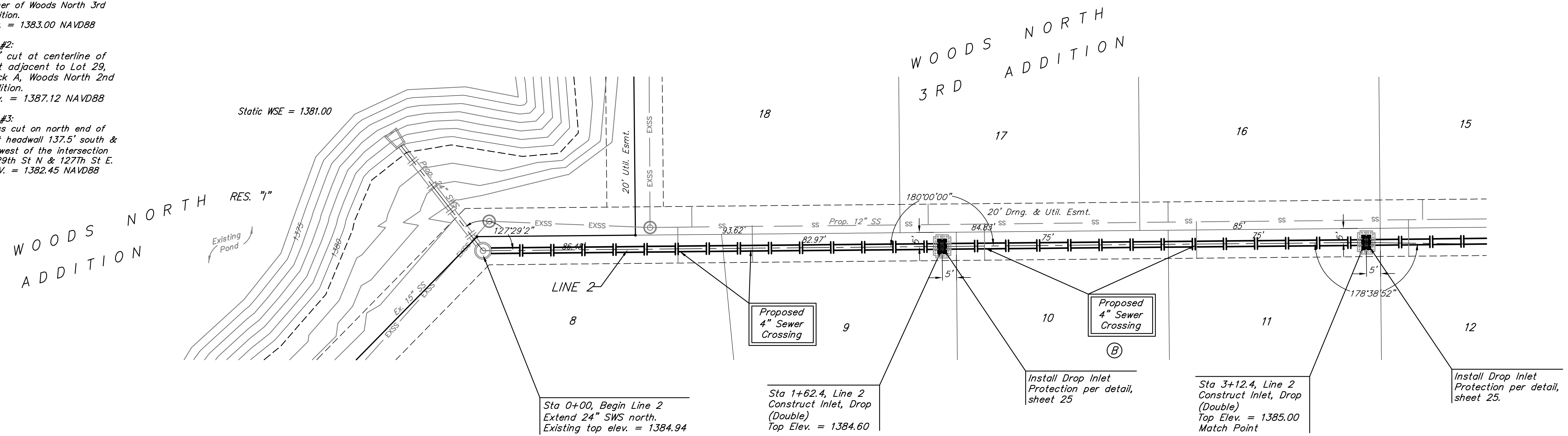
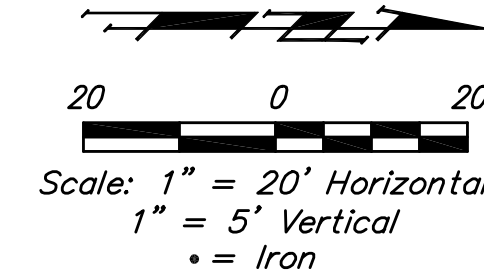


**BENCHMARKS:**  
 BM #1:  
 RR Spike in CATV Pole, 85' east and 77' south of SE corner of Woods North 3rd Addition.  
 Elev. = 1383.00 NAVD88

BM #2:  
 " " cut at centerline of inlet adjacent to Lot 29, Block A, Woods North 2nd Addition.  
 Elev. = 1387.12 NAVD88

BM #3:  
 Cross cut on north end of west headwall 137.5' south & 12' west of the intersection of 29th St. N & 127th St. E.  
 ELEV. = 1382.45 NAVD88



		WOODS NORTH 3RD ADD. PH. I	
		<b>LINE 2</b>	
PROJECT NUMBER 472-85046		DESIGN AEG	
APPROVED		DRAWN TMS	
REVISIONS:		APPROVED DATE 07/12	
SCALE Noted		SHEET <b>16 OF 35</b>	
14-17_SWS1.dwg		09-12-E428	