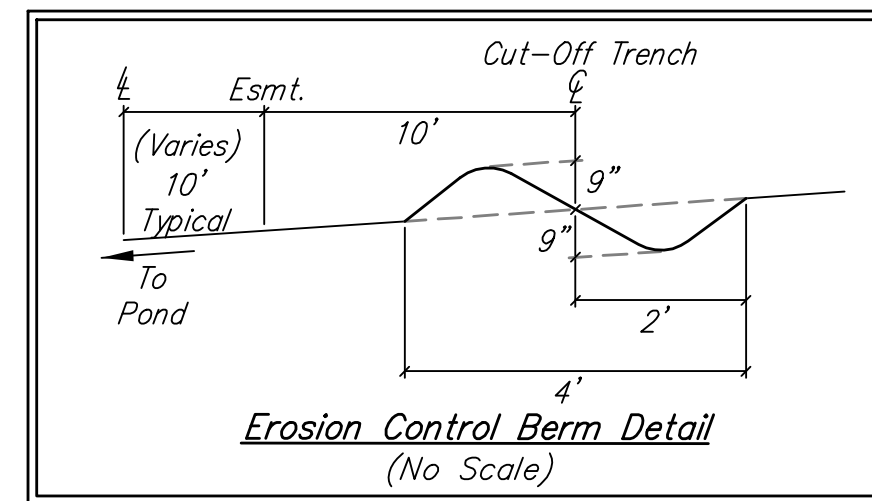
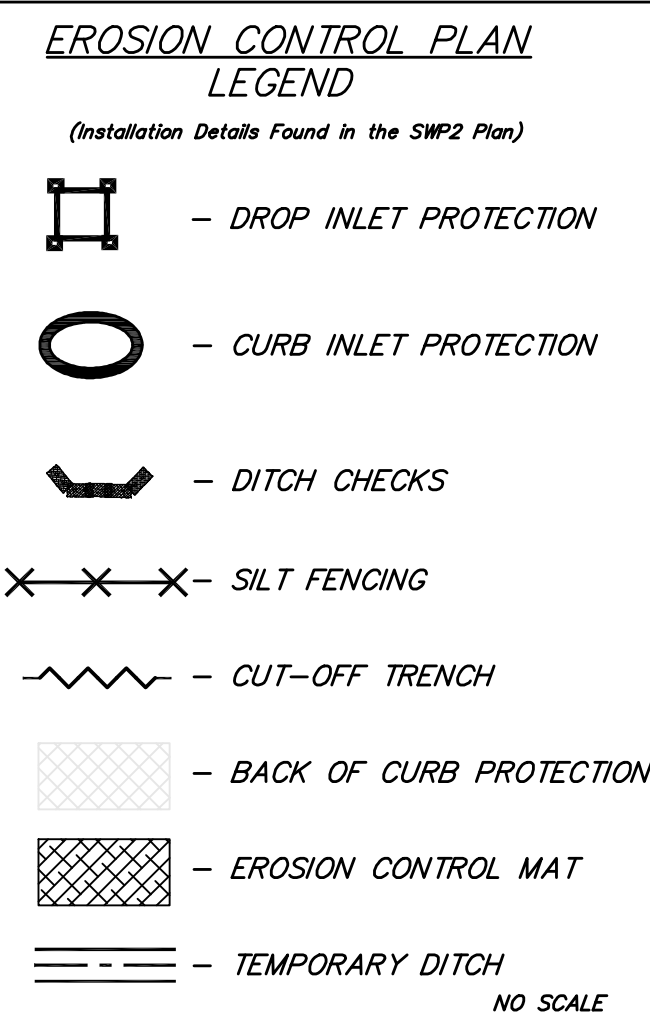


EROSION CONTROL MEASURE	INSTALL	MAINTAIN	REMOVE
BACK OF CURB PROTECTION (LF)	4,009	0	0
CONSTRUCTION ENTRANCE (EA)	0	1	0
CURB INLET BARRIER (EA)	3	2	0
DITCH CHECK (EA)	0	0	0
DROP INLET PROTECTION (EA)	7	2	0
EROSION CONTROL (LS)	0	0	0
EROSION CONTROL BERM (LF)	0	520	0
SILT FENCE (LF)	65	1,007	0
EROSION CONTROL MAT (SY)	0	0	0

QUANTITIES ARE FOR INFORMATION ONLY! CONTRACTOR SHALL VERIFY QUANTITIES PER FINAL BID QUANTITY SHEET.

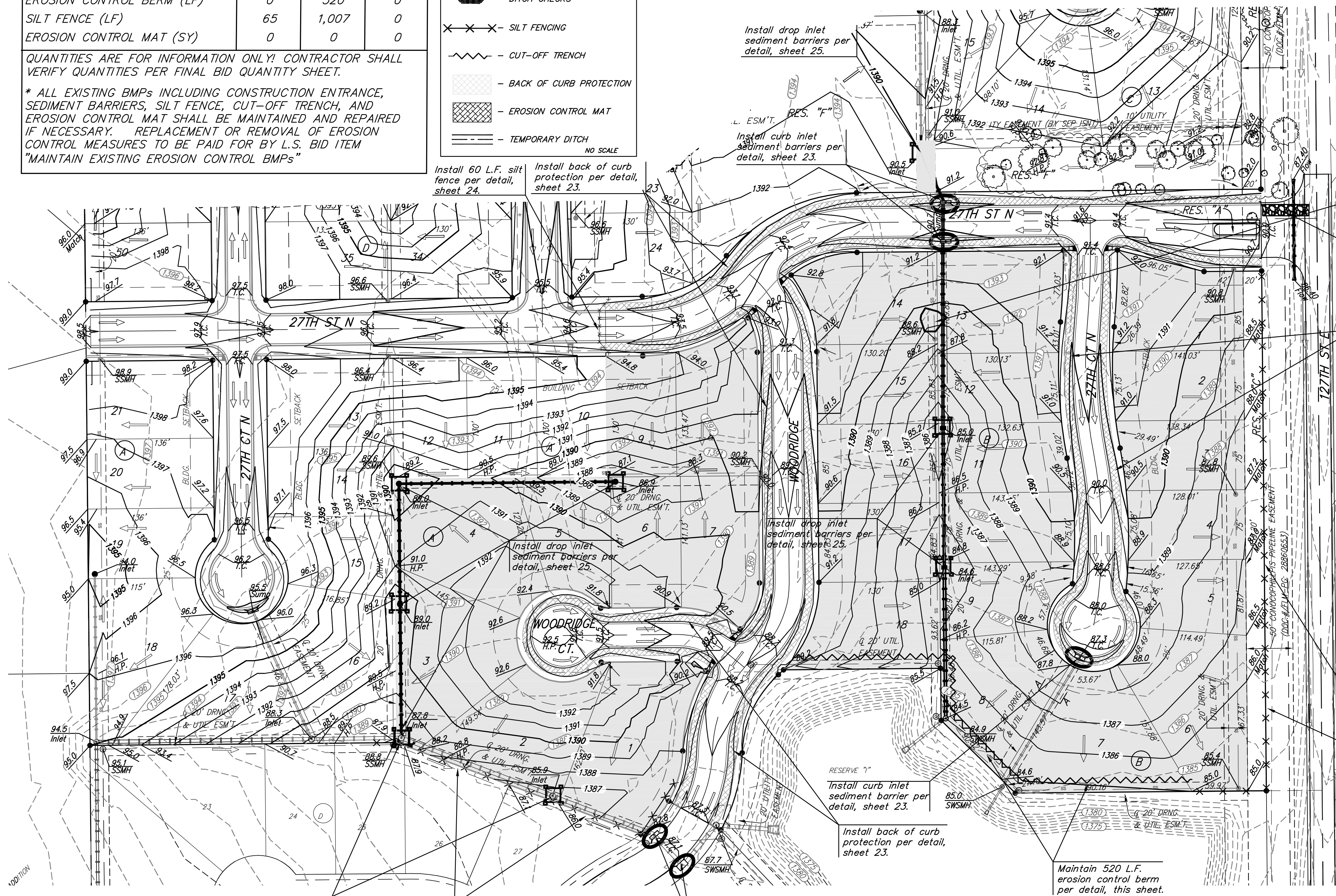
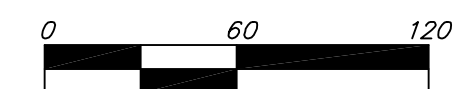
* ALL EXISTING BMPs INCLUDING CONSTRUCTION ENTRANCE, SEDIMENT BARRIERS, SILT FENCE, CUT-OFF TRENCH, AND EROSION CONTROL MAT SHALL BE MAINTAINED AND REPAIRED IF NECESSARY. REPLACEMENT OR REMOVAL OF EROSION CONTROL MEASURES TO BE PAID FOR BY L.S. BID ITEM "MAINTAIN EXISTING EROSION CONTROL BMPs"



BENCHMARK:
CROSS CUT ON NORTH END OF WEST HEADWALL
137.5' SOUTH & 12' WEST OF THE INTERSECTION
OF 27TH ST N & 127TH ST E.
ELEV. = 1382.45 NAVD88

---(1395)--- EXISTING CONTOUR
—1395— PROPOSED CONTOUR

Area to be graded



Contractor to remove existing rubble pile. Cost included in "Site Clearing."

Maintain 50'x12' gravel construction entrance per detail, sheet 23.

Install back of curb protection per detail, sheet 23.

All trees in Res. "F" shall remain and be protected from damage during construction. Overhanging limbs shall be chainsaw trimmed by the Contractor only as necessary for construction and with approval of the Engineer and Developer. Cost of tree trimming to be included in bid item "Site Clearing"

EARTH WORK TOTALS
Street R/W:
Excavation = 4,222 C.Y.
Loose Fill = 924 C.Y.
Compacted Fill = 550 C.Y.
Mass Grading (Not Incl. Street R/W):
Excavation = 7,732 C.Y.
Fill = 7,118 C.Y.
Contact engineer for location to spread or stockpile excess on-site. Earthwork quantities are for reference only. All cost associated with mass grading shall be incidental to lump sum bid item "Grading, Mass".
1. Compaction of 95% shall be obtained in all street R/W's, 90% in all other areas.
2. It shall be the Contractor's responsibility to protect the sanitary sewer, water distribution system and any other existing utilities during mass grading. Any damage done to these systems by Contractor or subcontractor shall be repaired at no additional cost to the project.
3. See cover sheet for seeding information.

Maintain 640 L.F. silt fence per detail, sheet 24.

Maintain 520 L.F. erosion control berm per detail, this sheet.

Maintain drop inlet sediment barriers per detail, sheet 25.

Maintain 367 L.F. silt fence per detail, sheet 24.

Maintain curb inlet sediment barriers per detail, sheet 23.

Baughman WOODS NORTH 3RD ADD. PH. I
MASS GRADING PLAN
STREET IMPROVEMENTS

Baughman Company, P.A. 515 Ellis St. Wichita, KS 67211 P 316-262-7271 F 316-262-0416
ENGINEERING | SURVEYING | PLANNING | LANDSCAPE ARCHITECTURE

PROJECT NUMBER 47285046	DESIGN AEG	DRAWN TMS
REVISIONS:	APPROVED	DATE 07/12
	SCALE Noted	SHEET 21 OF 35

21_Mass Grading.dwg 09-12-E428