

## GENERAL NOTES

- UNLESS SHOWN OR STATED OTHERWISE ON THESE DRAWINGS, MATERIALS AND CONSTRUCTION SHALL BE IN ACCORDANCE WITH CITY OF WICHITA CONCRETE PAVEMENT AND ASPHALTIC CONCRETE PAVEMENT SPECIFICATIONS.
- CONTRACTOR WILL BE REQUIRED TO PROVIDE A MINIMUM ADVANCE NOTICE OF SEVENTY-TWO (72) HOURS TO UTILITY COMPANIES PRIOR TO STARTING ANY EXCAVATION AS FOLLOWS:  
KANSAS ONE-CALL 1-800-344-7233  
OR 687-2470 (LOCAL WICHITA)  
THE CONTRACTOR MUST NOTIFY THE FOLLOWING IN CASE OF AN EMERGENCY:  
SBC (TELEPHONE) 800-870-8390  
COX COMMUNICATIONS (CABLE) 262-0661  
WESTAR (ELECTRIC) 383-8600  
KANSAS GAS SERVICE (GAS) 832-3101  
CITY OF WICHITA WATER & SEWER MAINT. 262-6000  
BLACK HILLS ENERGY (GAS) 800-303-0357
- THE CONTRACTOR SHALL BE RESPONSIBLE FOR PRESERVING PROPERTY IRONS. THE CONTRACTOR WILL BE REQUIRED TO RE-ESTABLISH ANY PROPERTY IRONS WHICH ARE DAMAGED OR DESTROYED BY HIS CONSTRUCTION OPERATIONS. SUCH IRONS SHALL BE RE-ESTABLISHED BY A LICENSED LAND SURVEYOR IN ACCORDANCE WITH STATE LAWS.
- EXISTING UTILITIES AND THEIR LOCATIONS, AS SHOWN ON THE PLANS REPRESENT THE BEST INFORMATION OBTAINABLE FOR DESIGN. LOCATION INFORMATION HAS BEEN OBTAINED FROM THE VARIOUS UTILITY COMPANIES AND IS EITHER FROM COMPANY RECORD DRAWINGS OR COMPANY PROVIDED FIELD LOCATIONS. THE PLAN LOCATIONS SHOWN ARE NOT GUARANTEED. ADDITIONAL EXISTING UTILITIES MAY ALSO BE ENCOUNTERED.
- RUBBLE FROM THE REMOVAL OF MISCELLANEOUS STRUCTURES AND EXCESS EXCAVATION WHICH IS TO BE WASTED SHALL BE DISPOSED OF ON SITES TO BE PROVIDED BY THE CONTRACTOR. THESE SITES SHALL BE APPROVED BY THE ENGINEER AS TO SUITABILITY, APPEARANCE AND SITE LOCATION. LOCATIONS THAT, IN THE OPINION OF THE ENGINEER, WILL LEAVE AN UNSIGHTLY APPEARANCE WILL NOT BE APPROVED. ALL DISPOSAL SITES MUST BE APPROVED BY THE KANSAS DEPARTMENT OF HEALTH AND ENVIRONMENT. MATERIAL EITHER STOCKPILED OR DISPOSED OF IN A FLOOD PLAIN WOULD REQUIRE A KANSAS STATE BOARD OF AGRICULTURE PERMIT. ANY MATERIAL DUMPED IN WATERS OF THE UNITED STATES OR WETLANDS IS SUBJECT TO U.S. CORPS OF ENGINEERS PERMITTING REGULATIONS. ANY MATERIAL BURIED OR STOCKPILED BEYOND APPROVED CONSTRUCTION LIMITS WOULD REQUIRE ADDITIONAL ARCHAEOLOGICAL INVESTIGATIONS UNLESS BURIED IN A PREVIOUSLY APPROVED BORROW LOCATION.
- THIS IS DESIGN GRADING. ALL GRADES SHALL BE CONTOURED SMOOTHLY WITH GENTLE ROUNDING/SHAPING OF ALL AFFECTED LAND SURFACES. ABRUPT TRANSITIONS AT THE TOP OF SLOPES WHERE PROPOSED GRADES MEET EXISTING ARE NOT ACCEPTABLE. SURVEY STAKES FOR POND GRADING ARE FOR GENERAL GRADING PURPOSES ONLY. NOT ALL SLOPES ARE CONSTANT AND THEREFORE THE GRADING PLANS SHALL BE REFERRED TO FOR FINAL GRADE SHAPING. ALL BERMS & POND EDGES SHALL BE FINAL GRADED/SHAPED WITH A TRACK DOZER, NOT A BLADE. THE GRADING SHALL BE APPROVED BY MKEC'S LANDSCAPE ARCHITECT PRIOR TO THE ADDITION OF THE TOPSOIL LAYER.
- A 6" LAYER OF TOPSOIL SHALL BE STRIPPED IN ALL AREAS OF CUT AND SAVED BACK FOR REPLACEMENT IN RESERVE AREAS. ANY EXCESS TOPSOIL SHALL BE SEPARATELY STOCK PILED ON-SITE AT AN APPROVED LOCATION. NO TOPSOIL SHALL BE PLACED IN LOTS OR WITHIN STREET R/W UNLESS SPECIFICALLY NOTED. IN CASES WHERE GRADING IS DIRECTED UNDER TREE DRIP LINES NO TOPSOIL STRIPPING SHALL BE PERFORMED WITHIN THESE AREAS.
- TOPSOIL SHALL BE REPLACED AT A DEPTH OF 6" IN ALL POND RESERVE AREAS (EXCEPT GRADES BELOW THE PROPOSED NORMAL POOL ELEVATION WITHIN PONDS). THE TOPSOIL REPLACEMENT THICKNESS SHALL BE A MINIMUM OF 12" ON BERMS. NOTE: THE FINISHED GRADE INDICATES THE SURFACE ELEVATION AFTER THE TOPSOIL LAYER HAS BEEN PLACED. THE TOP 12" OF TOPSOIL SHALL NOT BE PLACED ON BERMS WITHOUT PRIOR APPROVAL FROM THE LANDSCAPE ARCHITECT. IF THE TOP 12" OF TOPSOIL IS PLACED PRIOR TO APPROVAL AND THERE IS A PROBLEM, THE CONTRACTOR MAY NEED TO REWORK THE BERM IN ORDER TO CONSTRUCT PER THE INTENT OF THE PLAN.
- AS THE PROJECT NEARS COMPLETION, THE CONTRACTOR SHALL RIP (SCARIFY) ALL HAUL ROADS WITH AN AGRICULTURAL IMPLEMENT INTENDED FOR SUCH PURPOSES TO A DEPTH OF 18". MULTIPLE PASSES MAY BE NECESSARY TO THOROUGHLY ALEVIATE COMPACTION.
- IN THE EVENT THAT OFFSITE TOPSOIL IS NEEDED, IT SHALL BE FERTILE NATURAL TOPSOIL, TYPICAL OF THE LOCALITY, OBTAINED FROM WELL DRAINED AREAS. STOCKPILED TOPSOIL MAY BE USED. IT SHALL BE WITHOUT ADMIXTURE OF SUBSOIL OR SLAG AND SHALL BE FREE OF STONES, LUMPS, STICKS, PLANTS OR THEIR ROOTS, TOXIC SUBSTANCES OR OTHER EXTRANEOUS MATTER THAT MAY BE HARMFUL TO PLANT GROWTH OR WOULD INTERFERE WITH FUTURE MAINTENANCE. TOPSOIL pH RANGE SHALL BE 5.5 TO 7.0. TOPSOIL SHALL BE APPROVED BY MKEC'S LANDSCAPE ARCHITECT PRIOR TO PLACEMENT.
- CONTRACTOR SHALL RESEED AND MULCH ALL DISTURBED AREAS. COST SHALL BE CONSIDERED SUBSIDIARY TO TEMPORARY SEEDING.
- CONTRACTOR TO COORDINATE CONSTRUCTION OF PONDS AND STORM SEWER WITH OTHER CONSTRUCTION ACTIVITIES ON SITE. THIS INCLUDES SANITARY SEWER, WATER, AND STORM SEWER PROJECTS.
- DEVELOPER FOR THIS PROJECT IS:  
KRUG SOUTH RESIDENTIAL, LLC  
RITCHIE DEVELOPMENT CORPORATION  
8100 E. 22nd ST. BLDG. 1000  
WICHITA, KANSAS, 67226  
CONTACT - TERRY D. RHEA, VICE PRESIDENT  
316-684-7300

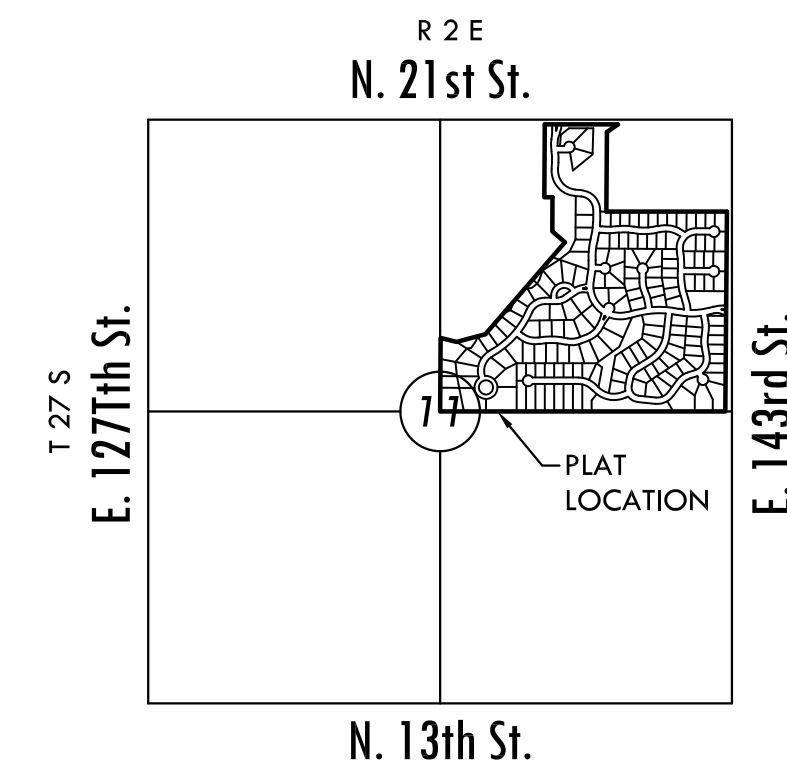
## STORM WATER DRAIN 321 PHASE 2

# KRUG SOUTH ADDITION

PROJECT NO. 468-84328

THE CITY OF WICHITA, KANSAS  
GARY L. JANZEN, P.E., INTERIM CITY ENGINEER

OCA NO. 751511



### VICINITY MAP

### INDEX TO DRAWINGS

SHEET NO.	DESCRIPTION
1	TITLE SHEET
2	DETAILS
3	GENERAL SEEDING NOTES
4	GRADING PLAN
5	GRADING POINTS
6	LINE 1
7	AREA INLET DETAIL
8	EROSION PLAN
9-13	BMP DETAILS
14-16	PLAT

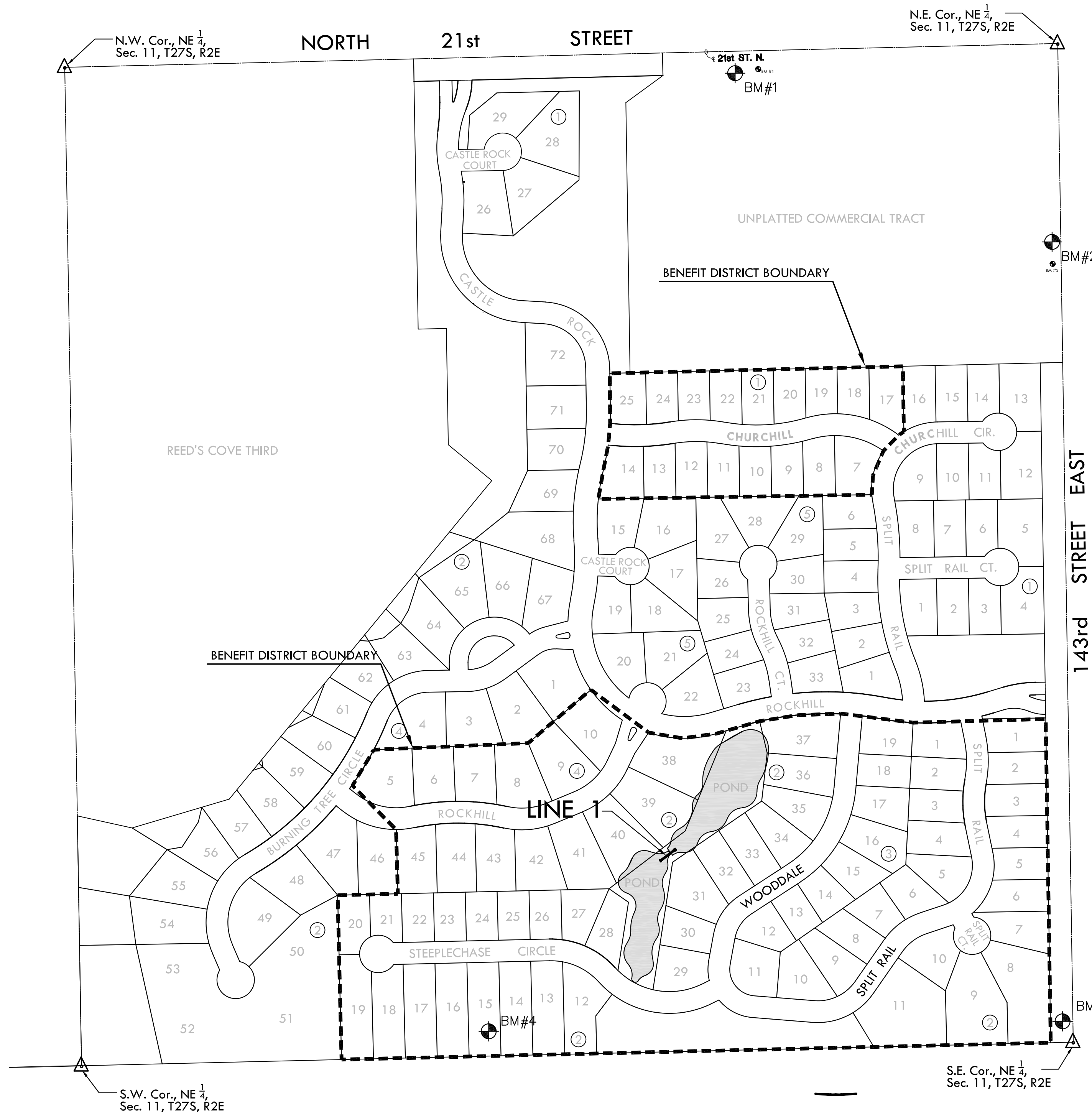
### EARTHWORK TABULATIONS

EXCAVATION	23,500 CY
COMPACTED FILL (95% DENSITY)	20,500 CY

NOTE: 15% HAS BEEN ADDED TO EXCAVATION QUANTITIES TO ALLOW FOR COMPACTION AND HANDLING

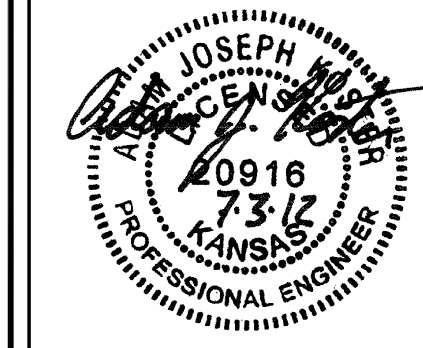
### BENCHMARKS

Datum BM	"T" at NE corner of inlet on S. side of Williamsgate over bridge in Hawthorne Addition. Elev. = 1355.74 (NGVD 29)
BM#1	RR spike in S. face of PP, 3rd PP W. of 143rd St. (799' from CL) S. side of 21st St. (49' from CL) Elev. = 1362.17 (NGVD 29)
BM#2	FH NE bolt w/ tag on top of flange, W. side of 143rd St. NW of drive. (23' from CL) Elev. = 1382.81 (NGVD 29)
BM#3	RR spike in N. face of HLP in N. pole, the first HLP w. of E. 143rd St. Elev. = 1370.25 (NGVD 29)
BM#4	RR spike in N. face of HLP in N. pole, the third HLP west of E. 143rd St. Elev. = 1358.43 (NGVD 29)
BM#5	BM Chiseled square on top of curb between Lots 65 and 66, Block 2. Elev. = 1358.93 NGVD 29
BM#6	BM Chiseled square on top of curb between Lots 62 and 63, Block 2. Elev. = 1354.11 NGVD 29
BM#7	TBM Chiseled "+" on north rim of sanitary sewer manhole 187' southwest of south end of existing pavement on Burning Tree, 9.7' north of "south" corner of Lot 59, Block 2. Elev. = 1354.96 NGVD 29



**MKEC**  
ENGINEERING  
CONSULTANTS, INC.

411 N. WEBB ROAD  
WICHITA, K.S. 67206  
316-684-9600



**SWD 321**  
**KRUG SOUTH ADDITION**  
**PHASE 2**

### TITLE SHEET

SHEET TITLE  
468-84328  
PROJECT NUMBER

MLP | JWC | GJA  
DESIGNED | DRAWN | CHECKED

ISSUED  
July 2012

REVISED

SHEET NO.

1 of 16