



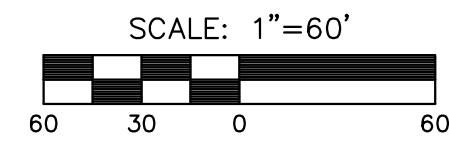
SWD 321
KRUG SOUTH ADDITION
PHASE 2

EROSION CONTROL NOTES

1. EROSION CONTROL IS TO MEET ALL FEDERAL, STATE, COUNTY & LOCAL CODE STANDARDS.
2. CONTRACTOR SHALL PROVIDE AND PRESERVE EROSION PROTECTION THROUGHOUT PROJECT CONSTRUCTION. THE PLAN PROVIDED HERE IS FOR FINAL PROTECTION, VARIOUS PHASES OF THIS PLAN SHALL BE IMPLEMENTED OR MODIFIED TO CONTROL EROSION. MODIFICATIONS OF THE PLAN SHALL BE APPROVED BY THE OWNERS REPRESENTATIVE.
3. CONTRACTOR IS RESPONSIBLE FOR MAINTAINING AND IMPLEMENTING ALL EROSION CONTROL.
4. CONTRACTOR SHALL INSTALL AND MAINTAIN A STABILIZED CONSTRUCTION ENTRANCE AT A LOCATION DETERMINED BY THE ENGINEER.
5. EROSION CONTROL MATS ARE LISTED IN THE LEGEND BELOW. INSTALL PER MANUFACTURER'S RECOMMENDATIONS.

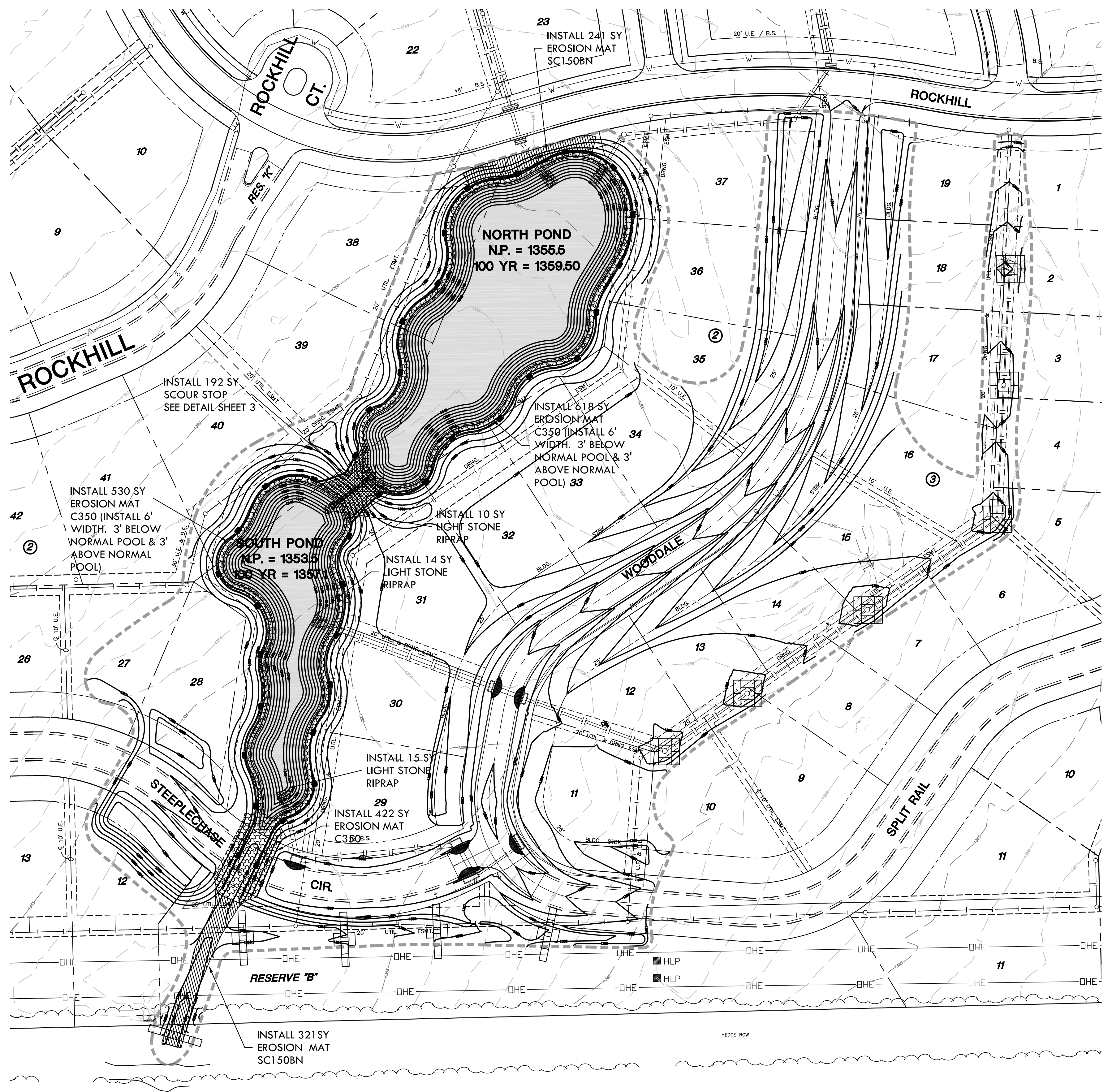
CRIMPING NOTES

1. ONCE TOPSOIL HAS BEEN PLACED, DISC/SCARIFY SOIL PRIOR TO SPREADING PRAIRIE HAY.
2. SPREAD PRAIRIE HAY (2 TONS/AC.) AND IMMEDIATELY CRIMP INTO TOPSOIL WITH SUITABLE MECHANICAL EQUIPMENT.



EROSION CONTROL LEGEND

- SEEDING LIMITS
ANNUAL RYE (9.0 AC) 150 LBS/ACRE
FESCUE SEED (9.0 AC) 175 LBS/ACRE
FERTILIZE 10-20-10 @ 150 LBS/ACRE
(QUANTITIES GIVEN FOR INFORMATION ONLY)
- 1360— PROPOSED CONTOURS
- ◐ CURB INLET FILTER (6)
- ◻ INLET PROTECTION (7)
- ⊕ HAYBALE (5)
- SB— SILT BARRIER (1950 LF)
- ▨ EROSION MAT SC150BN (562 SY) SEE SHEET 3
- ▩ SCOUR STOP (192 SY) SEE SHEET 3
- ▧ EROSION MAT C350 (1570 SY) SEE SHEET 3
- ▦ RIPRAP (39 SY)



EROSION
SHEET TITLE
468-84328
PROJECT NUMBER

MLP / MLP / GJA
DESIGNED / DRAWN / CHECKED

ISSUED
July 2012

REVISED

SHEET NO.
8 of 16