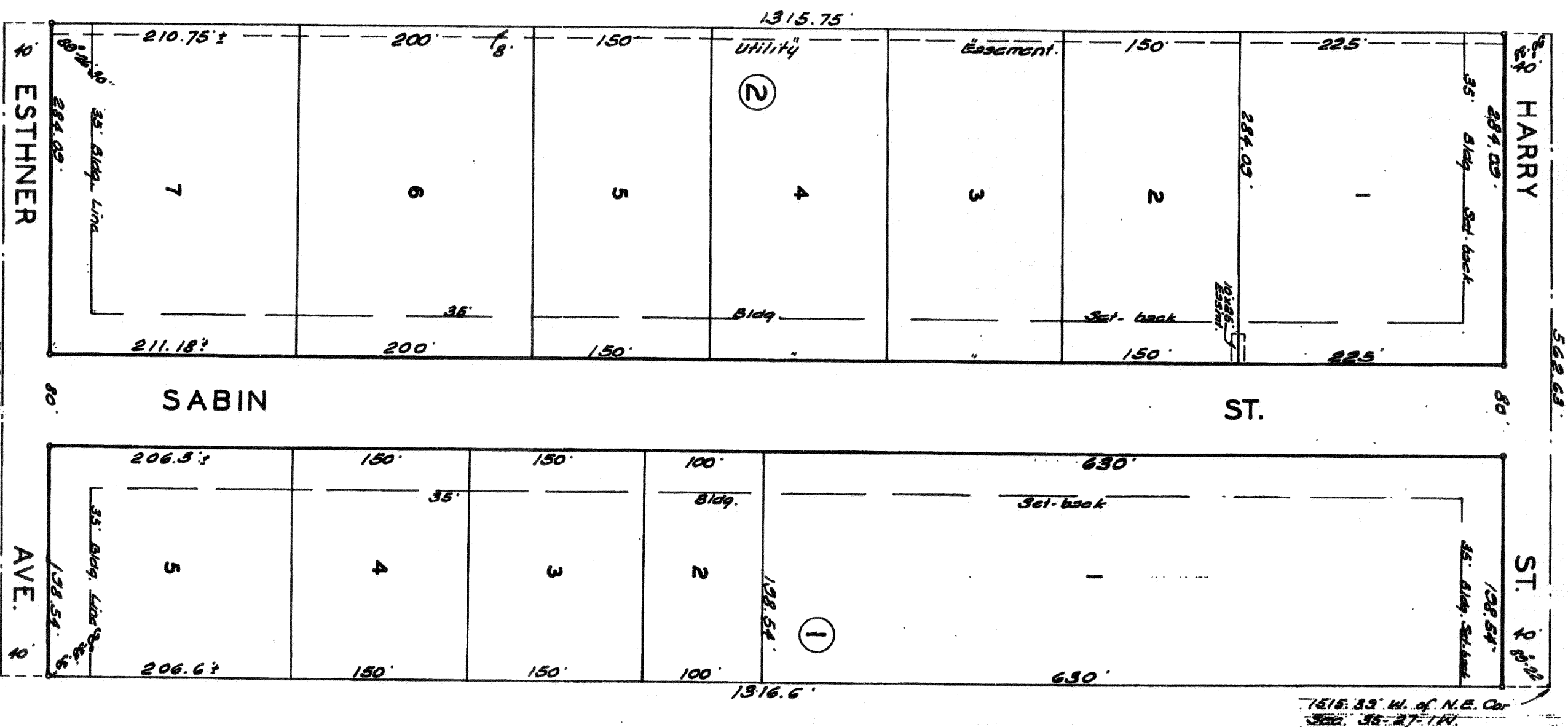


# WICHITA BUILDERS ADDITION

WICHITA KANSAS



Know all men by these presents that we Wichita Builders Inc. a corporation by Martin Dondlinger, President and Leo Dondlinger, Secretary, have caused the land described in the surveyors certificate to be platted into lots, blocks, streets and an avenue to be known as WICHITA BUILDERS ADDITION, Wichita, Kansas. Easements are hereby granted as indicated for the construction and maintenance of all public utilities. The streets and avenues are hereby dedicated to and for the use of the public.

*Martin Dondlinger* President  
*Leo Dondlinger* Secretary

State of Kansas } s.s. Be it remembered that on this 19th day of July 1967, before me a notary public in and for Sedgewick and state came Martin Dondlinger, President and Leo Dondlinger, Secretary of Wichita Builders, Inc. to me known to be the same persons who executed the foregoing instrument of writing and duly acknowledged the execution of the same. In testimony whereof I have hereunto set my hand and affixed my notary seal the day and year above written.

My Comm. Exp. July 2, 1968  
*Deane Theis* Notary Public

This plat of "WICHITA BUILDERS ADDITION" Wichita, Kansas has been approved by the Wichita, Sedgewick County Metropolitan Area Planning Commission, Wichita, Kansas and is hereby transmitted to the Board of Commissioners of the City of Wichita, Kansas, with the recommendation that such plat be approved as proposed. Dated this 13th day of July 1967, Wichita, Sedgewick County Metropolitan Area Planning Commission.

*Robert A. Galt* Chairman  
*Robert A. Galt* Secretary

Approved by the Board of City Commissioners this 22nd day of August 1967.

*Donald C. Bunch* Secretary

Approved by the Board of County Commissioners this 12th day of August 1967.

*Carl E. Stuel* Chairman  
*Myrtle E. Stuel* Commissioner

and this 12th day of August 1967.

*Myrtle E. Stuel* County Clerk  
*Myrtle E. Stuel* Secretary

State of Kansas } s.s. The Baughman Company, Surveyors do hereby certify that we have surveyed and platted "WICHITA BUILDERS ADDITION" Wichita, Kansas, and that the accompanying plat is a true and correct exhibit of the property surveyed described as follows: The west 26.63 feet of the east 761.17 feet of the N.W. 1/4 of the Sec. 35, Twp. 37. S., R. 1. W., Baughman Company Surveyors.

19359  
*Paul J. Dwyer* Surveyor  
 State of Kansas } s.s. This is to certify that this plat was filed for record in the office of the Register of Deeds this 12th day of August 1967, at 2:18 p.m., and is duly recorded.

*Rufus E. Manning* Register of Deeds  
 By *Donald B. Kilmer* Deputy  
 Frank B. Gilbrant

