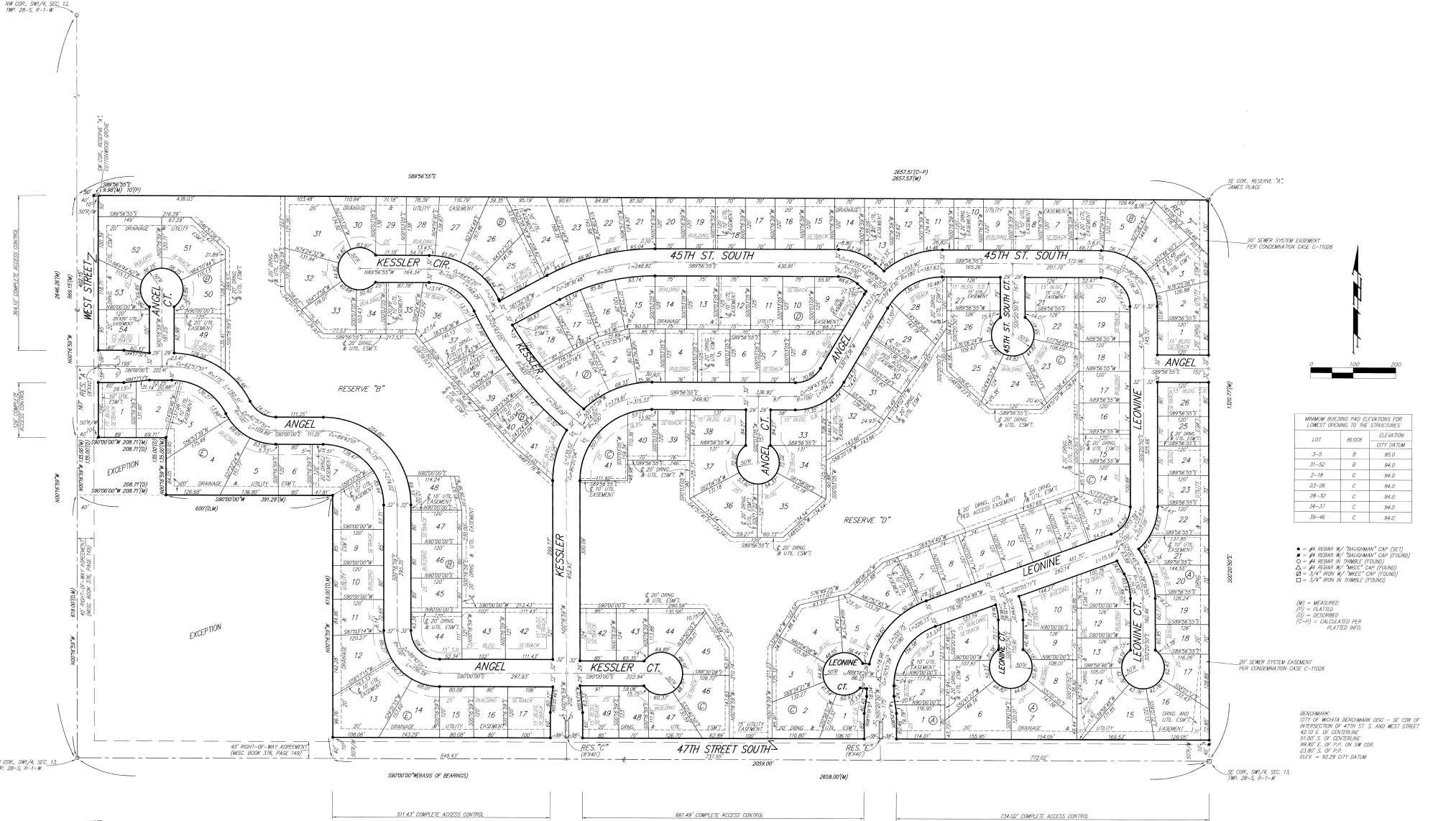


ANGEL FIRE ADDITION

WICHITA, SEDGWICK COUNTY, KANSAS



MINIMUM BUILDING PAD ELEVATIONS FOR LOWEST OPENING TO THE STRUCTURES

LOT	BLOCK	ELEVATION	CITY DATUM
3-5	B	95.0	
31-52	B	94.0	
2-18	C	94.0	
23-26	C	94.0	
38-32	C	94.0	
34-37	C	94.0	
39-46	C	94.0	

- = # REBAR W/ "RAUQUANAY" CAP (SET)
 - = # REBAR W/ "RAUQUANAY" CAP (FOUND)
 - = # REBAR W/ TUMBLE (FOUND)
 - △ = # REBAR W/ "MEEC" CAP (FOUND)
 - = 3/4" IRON W/ TUMBLE (FOUND)
- (M) = MEASURED
 (P) = PLATTED
 (S) = DESCRIBED
 (C-P) = CALCULATED PER PLATTED INFO.

BENCHMARK:
 CITY OF WICHITA BENCHMARK DESC - SE COR. OF INTERSECTION OF 47TH ST. S. AND WEST STREET 42.0' E. OF CENTERLINE 51.00' S. OF CENTERLINE 58.86' E. OF P.C. ON SW COR. 23.80' S. OF P.P. ELEV. = 22.29 CITY DATUM

NOTE:
 A MASTER DRAINAGE PLAN FOR DRAINAGE HAS BEEN DEVELOPED FOR THIS SUBDIVISION AND IS ON FILE WITH THE CITY OF WICHITA, KANSAS. ALL DRAINAGE EASEMENTS, RIGHTS-OF-WAY OR RESERVES SHALL REMAIN AS ESTABLISHED UNLESS OR AS MODIFIED WITH THE APPROVAL OF THE CITY ENGINEER OF THE CITY OF WICHITA, KANSAS. NO RESTRICTIONS WHICH WOULD AFFECT THE FLOW OF THIS DRAINAGE SYSTEM SHALL BE ALLOWED.