

AIRPORT INDUSTRIAL PARK

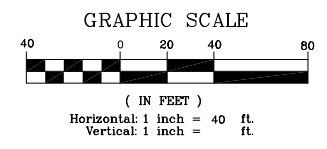
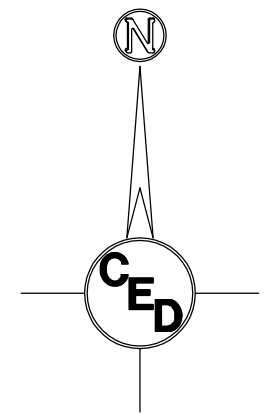
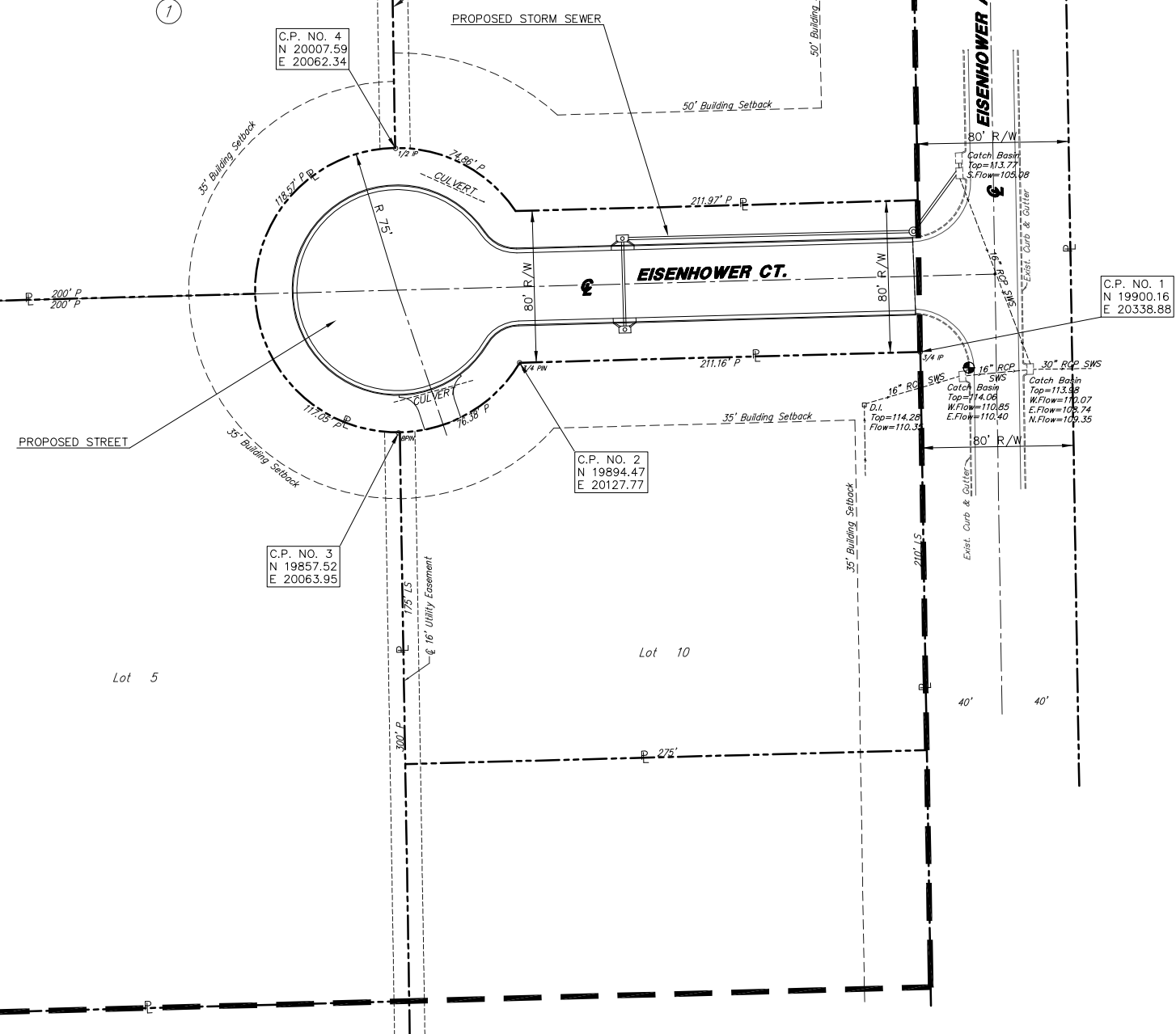
Lot 4

Lot 11

Lot 5

Lot 10

IMPROVEMENT DISTRICT



LEGEND

- gas = gas
- ohe = overhead electric
- ss = sanitary sewer
- SWS = storm water sewer
- uge = underground electric
- ugt = underground telephone
- W = water
- 1/2" IP = 1/2" iron pipe (found)
- 1/2" RBW = 1/2" rebar (found), Baughman cap
- 3/4" IPW = 3/4" iron pipe (found)
- P = platted
- P = property line
- BM = benchmark
- CMP = corrugated metal pipe
- f = fence
- F.H. = fire hydrant
- G.M. = gas meter
- GA = guy anchor
- PP = power pole
- RCP = reinforced concrete pipe
- SS M.H. = sanitary sewer manhole
- d = sign
- TELE. PED = telephone pedestal
- W.M. = water meter

UTILITIES SHOWN REPRESENT THE BEST INFORMATION AVAILABLE FOR DESIGN. ADDITIONAL UTILITIES MAY BE PRESENT ON THIS PROJECT. THE CONTRACTOR SHALL BE RESPONSIBLE FOR DETERMINING THE EXACT LOCATION, DEPTH AND SIZE OF ALL UNDERGROUND UTILITIES PRIOR TO CONSTRUCTION. THE CONTRACTOR SHALL BE LIABLE FOR ANY DAMAGE CAUSED BY THE FAILURE TO DO SO.

SURVEY DISCLAIMER:
TOPOGRAPHIC SURVEY AND CONTOUR MAP USED IN PREPARING PLANS WAS PROVIDED BY SAVOY COMPANY, P.A., 535 S. EMPORIA, SUITE 104, WICHITA, KS. ENGINEER DOES NOT GUARANTEE SURVEY ELEVATIONS FOR ACCURACY. CONTRACTOR SHALL VERIFY ELEVATIONS AND NOTIFY ENGINEER OF ANY DISCREPANCIES.

NOTE:
CONTRACTOR SHALL PROVIDE CONSTRUCTION ENTRANCE, HAYBALES, AND/OR SILT FENCES AS REQUIRED BY CITY OF WICHITA SOIL EROSION BEST MANAGEMENT PRACTICES (BMP'S) (SEE SHEETS 8-11).

BENCHMARK:
Square Cut on Top of Curb
S. Curb Return at NE Corner Lot 10, Block 1, Airport Industrial Park
Elevation=1301.27 NGVD, 113.87 City Datum

HORIZONTAL CONTROL POINTS

C.P. NO. 1	N 19900.16 E 20338.88	NE Cor. Lot 10, Block 1, Airport Industrial Park 3/4" Iron Pipe (found)
C.P. NO. 2	N 19894.47 E 20127.77	North/NW Cor. Lot 10, Block 1, Airport Industrial Park 3/4" Iron Pipe (found)
C.P. NO. 3	N 19857.52 E 20063.95	East/NE Cor. Lot 5, Block 1, Airport Industrial Park 1/2" Rebar (found), Baughman Cap
C.P. NO. 4	N 20007.59 E 20062.34	East/SE Cor. Lot 4, Block 1, Airport Industrial Park 1/2" Iron Pipe (found)

EISENHOWER COURT
SITE PLAN
WICHITA, SEDGWICK COUNTY, KANSAS
PROJ. NO.: 472 84112 (765908)
CERTIFIED ENGINEERING DESIGN, P.A.
810 WEST DOUGLAS, SUITE C
WICHITA, KANSAS 67203
PH.(316)262-8808 FAX.(316)262-1669

DESIGNED: HDF	SCALE: 1"=40'	SHEET
DRAWN: AEE	DATE: 03/05	2
CHECKED: HDF	CED FILE: 20041218	TOTAL 14