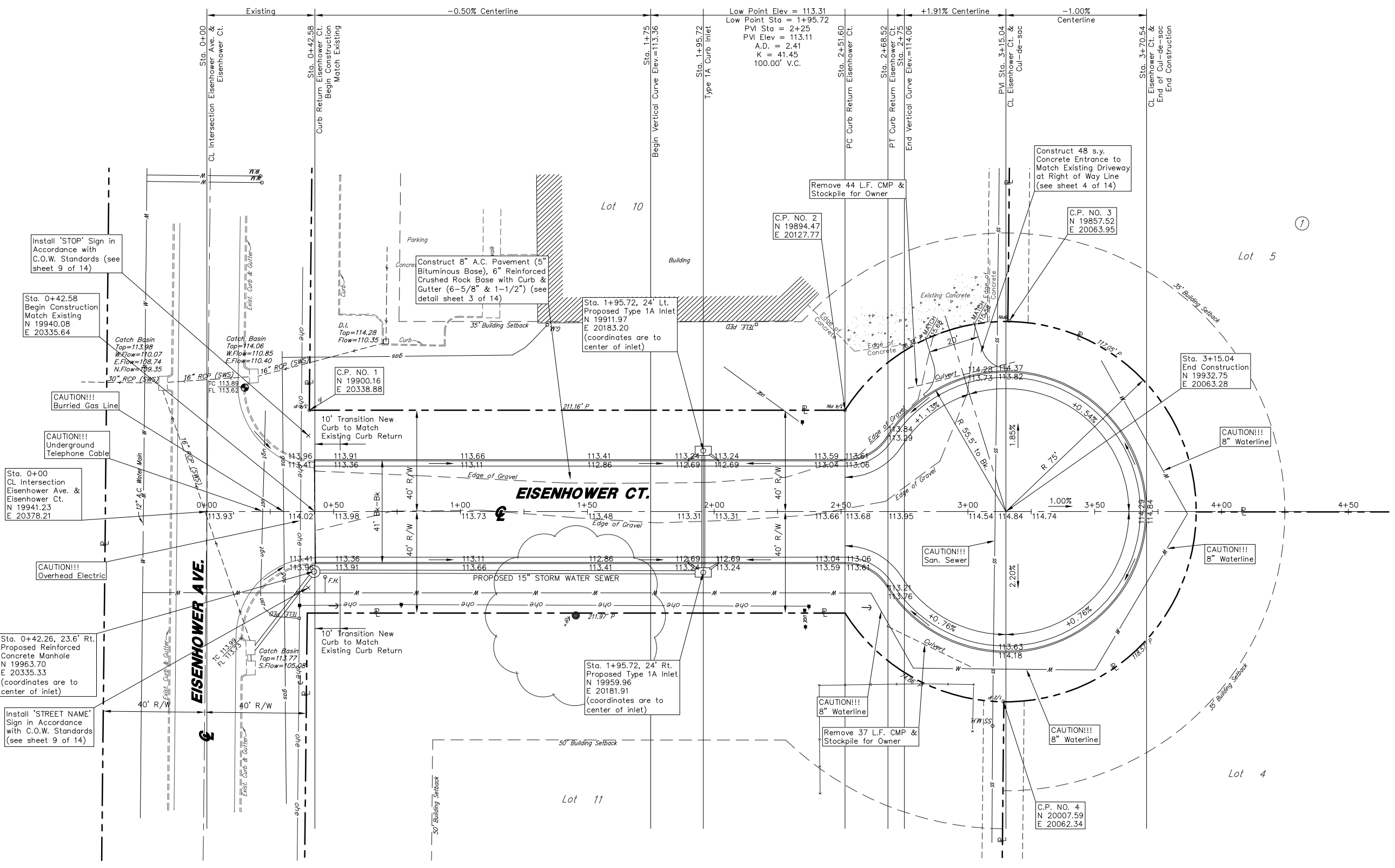


**LEGEND**

- gas = gas
- oh = overhead electric
- ss = sanitary sewer
- SWS = storm water sewer
- uge = underground electric
- ugt = underground telephone
- W = water
- 1/2" P = 1/2" iron pipe (found)
- 1/2" RB = 1/2" rebar (found), Baughman cap
- 3/4" RP = 3/4" iron pipe (found)
- P = platted
- PL = property line
- BM = benchmark
- CMP = corrugated metal pipe
- X = fence
- F.H. = fire hydrant
- G.M. = gas meter
- GA = guy anchor
- PP = power pole
- RCP = reinforced concrete pipe
- SS M.H. = sanitary sewer manhole
- S = sign
- TELE. PED = telephone pedestal
- WM = water meter
- Tree symbol = tree



UTILITIES SHOWN REPRESENT THE BEST INFORMATION AVAILABLE FOR DESIGN. ADDITIONAL UTILITIES MAY BE PRESENT ON THIS PROJECT. THE CONTRACTOR SHALL BE RESPONSIBLE FOR DETERMINING THE EXACT LOCATION, DEPTH AND SIZE OF ALL UNDERGROUND UTILITIES PRIOR TO CONSTRUCTION. THE CONTRACTOR SHALL BE LIABLE FOR ANY DAMAGE CAUSED BY THE FAILURE TO DO SO.

**SURVEY DISCLAIMER:**  
 TOPOGRAPHIC SURVEY AND CONTOUR MAP USED IN PREPARING PLANS WAS PROVIDED BY SAVOY COMPANY, P.A., 535 S. EMPORIA, SUITE 104, WICHITA, KS. ENGINEER DOES NOT GUARANTEE SURVEY ELEVATIONS FOR ACCURACY. CONTRACTOR SHALL VERIFY ELEVATIONS AND NOTIFY ENGINEER OF ANY DISCREPANCIES.

**HORIZONTAL CONTROL POINTS**

C.P. NO. 1	N 19900.16 E 20338.88	NE Cor. Lot 10, Block 1, Airport Industrial Park 3/4" Iron Pipe (found)
C.P. NO. 2	N 19894.47 E 20127.77	North/NW Cor. Lot 10, Block 1, Airport Industrial Park 3/4" Iron Pipe (found)
C.P. NO. 3	N 19857.52 E 20063.95	East/NE Cor. Lot 5, Block 1, Airport Industrial Park 1/2" Rebar (found), Baughman Cap
C.P. NO. 4	N 20007.59 E 20062.34	East/SE Cor. Lot 4, Block 1, Airport Industrial Park 1/2" Iron Pipe (found)

**BENCHMARK:**  
 Square Cut on Top of Curb  
 S. Curb Return at NE Corner Lot 10, Block 1, Airport Industrial Park  
 Elevation=1301.27 NGVD, 113.87 City Datum

**NOTE:**  
 CONTRACTOR SHALL PROVIDE CONSTRUCTION ENTRANCE, HAYBALES, AND/OR SILT FENCES AS REQUIRED BY CITY OF WICHITA SOIL EROSION BEST MANAGEMENT PRACTICES (BMP'S) (SEE SHEETS 8-11).

**EISENHOWER COURT STREET PLAN**  
 WICHITA, SEDGWICK COUNTY, KANSAS  
 PROJ. NO.: 472 84112 (765908)  
**CERTIFIED ENGINEERING DESIGN, P.A.**  
 810 WEST DOUGLAS, SUITE C  
 WICHITA, KANSAS 67203  
 PH.(316)262-8808 FAX.(316)262-1669

DESIGNED: HDF	SCALE: NTS	SHEET 5
DRAWN: AEE	DATE: 03/05	TOTAL 14
CHECKED: HDF	CED FILE: 20041218	