

CAUTION!!!
6" Waterline
Verify Depth of Existing Waterline
Prior to Construction

Install 39.47 L.F. of
15" RCP at 0.4%

CAUTION!!!
Overhead
Electric

Sta. 0+39.47
Construct Reinforced Concrete
Manhole
Top MH Elev. 114.50
FL Out (NE) 105.44
FL IN (W) 105.64
N 19963.70
E 20335.33
(coordinates are to center of inlet)
(see detail sheet 8 of 14)

Install Flowable Fill
from Sta. 1+92.94
to Sta. 2+40.88

Install 47.94 L.F. of
15" RCP at 0.4%

Sta. 2+40.88
Construct Type 1A Curb Inlet
Top Inlet Elev. 113.24
FL Out (N) 106.64
N 19911.97
E 20183.20
(coordinates are to center of inlet)
(see detail sheet 7 of 14)

Sta. 1+92.94
Construct Type 1A Curb Inlet
Top Inlet Elev. 113.24
FL In (S) 106.45
FL Out (E) 106.25
N 19959.96
E 20181.91
(see detail sheet 7 of 14)
(coordinates are to center of inlet)

Sta. 0+00
Connect 15" RCP to
Exist. Curb Inlet
Top Inlet Elev. 113.77
Exist. FL Out(S) 105.08
FL In(SW) 105.28
N 19994.41
E 20359.21
(coordinates are to center of inlet)

CAUTION!!!
Buried Gas Line
Verify Depth of Existing Gas Line
Prior to Construction

CAUTION!!!
Underground Telephone Line
Verify Depth of Existing Telephone Line
Prior to Construction

UTILITIES SHOWN REPRESENT THE BEST INFORMATION AVAILABLE FOR DESIGN. ADDITIONAL UTILITIES MAY BE PRESENT ON THIS PROJECT. THE CONTRACTOR SHALL BE RESPONSIBLE FOR DETERMINING THE EXACT LOCATION, DEPTH AND SIZE OF ALL UNDERGROUND UTILITIES PRIOR TO CONSTRUCTION. THE CONTRACTOR SHALL BE LIABLE FOR ANY DAMAGE CAUSED BY THE FAILURE TO DO SO.

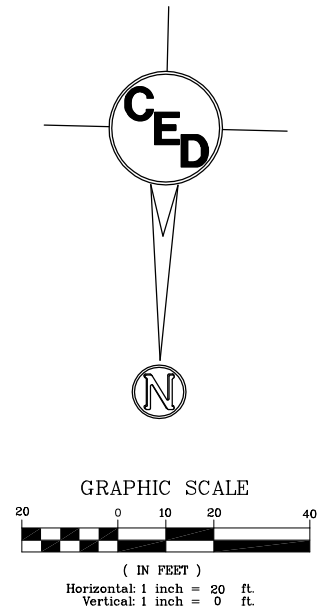
SURVEY DISCLAIMER:
TOPOGRAPHIC SURVEY AND CONTOUR MAP USED IN PREPARING PLANS WAS PROVIDED BY SAVOY COMPANY, P.A., 535 S. EMPORIA, SUITE 104, WICHITA, KS. ENGINEER DOES NOT GUARANTEE SURVEY ELEVATIONS FOR ACCURACY. CONTRACTOR SHALL VERIFY ELEVATIONS AND NOTIFY ENGINEER OF ANY DISCREPANCIES.

HORIZONTAL CONTROL POINTS

C.P. NO.	N	E	Description
C.P. NO. 1	19900.16	20338.88	NE Cor. Lot 10, Block 1, Airport Industrial Park 3/4" Iron Pipe (found)
C.P. NO. 2	19894.47	20127.77	North/NW Cor. Lot 10, Block 1, Airport Industrial Park 3/4" Iron Pipe (found)
C.P. NO. 3	19857.52	20063.95	East/NE Cor. Lot 5, Block 1, Airport Industrial Park 1/2" Rebar (found), Baughman Cap
C.P. NO. 4	20007.59	20062.34	East/SE Cor. Lot 4, Block 1, Airport Industrial Park 1/2" Iron Pipe (found)

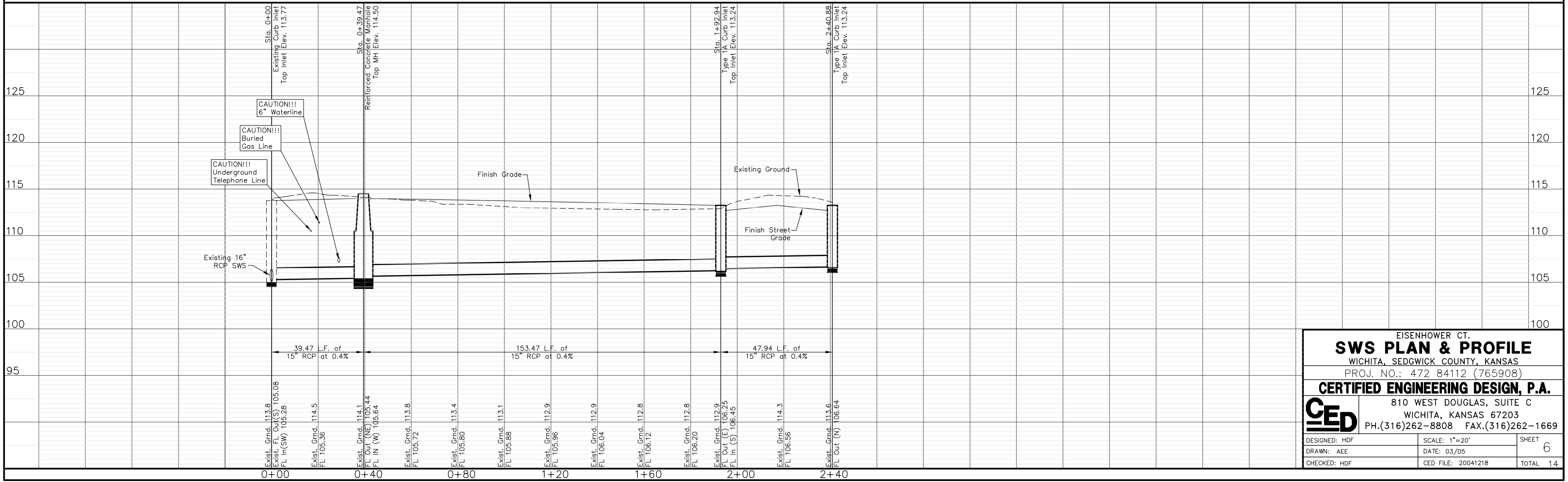
BENCHMARK:
Square Cut on Top of Curb
S. Curb Return at NE Corner Lot 10, Block 1, Airport Industrial Park
Elevation=1301.27 NGVD, 113.87 City Datum

NOTE:
CONTRACTOR SHALL PROVIDE CONSTRUCTION ENTRANCE, HAYBALES, AND/OR SILT FENCES AS REQUIRED BY CITY OF WICHITA SOIL EROSION BEST MANAGEMENT PRACTICES (BMP'S) (SEE SHEETS 8-11).



LEGEND

- gas = gas
- ohe = overhead electric
- ss = sanitary sewer
- SWS = storm water sewer
- uge = underground electric
- ugt = underground telephone
- W = water
- 1/2 P = 1/2" iron pipe (found)
- 1/2 RW = 1/2" rebar (found), Baughman cap
- 3/4 RW = 3/4" iron pipe (found)
- P = platted
- P = property line
- BM = benchmark
- CMP = corrugated metal pipe
- X = fence
- F.H. = fire hydrant
- G.M. = gas meter
- GUY = guy anchor
- PP = power pole
- RCP = reinforced concrete pipe
- SS M.H. = sanitary sewer manhole
- sign = sign
- TELE. PED = telephone pedestal
- WM = water meter
- tree = tree



EISENHOWER CT.
SWS PLAN & PROFILE
WICHITA, SEDGWICK COUNTY, KANSAS
PROJ. NO.: 472 84112 (765908)
CERTIFIED ENGINEERING DESIGN, P.A.
CED
810 WEST DOUGLAS, SUITE C
WICHITA, KANSAS 67203
PH.(316)262-8808 FAX.(316)262-1669

DESIGNED: HDF	SCALE: 1"=20'	SHEET
DRAWN: AEE	DATE: 03/05	6
CHECKED: HDF	CED FILE: 20041218	TOTAL 14