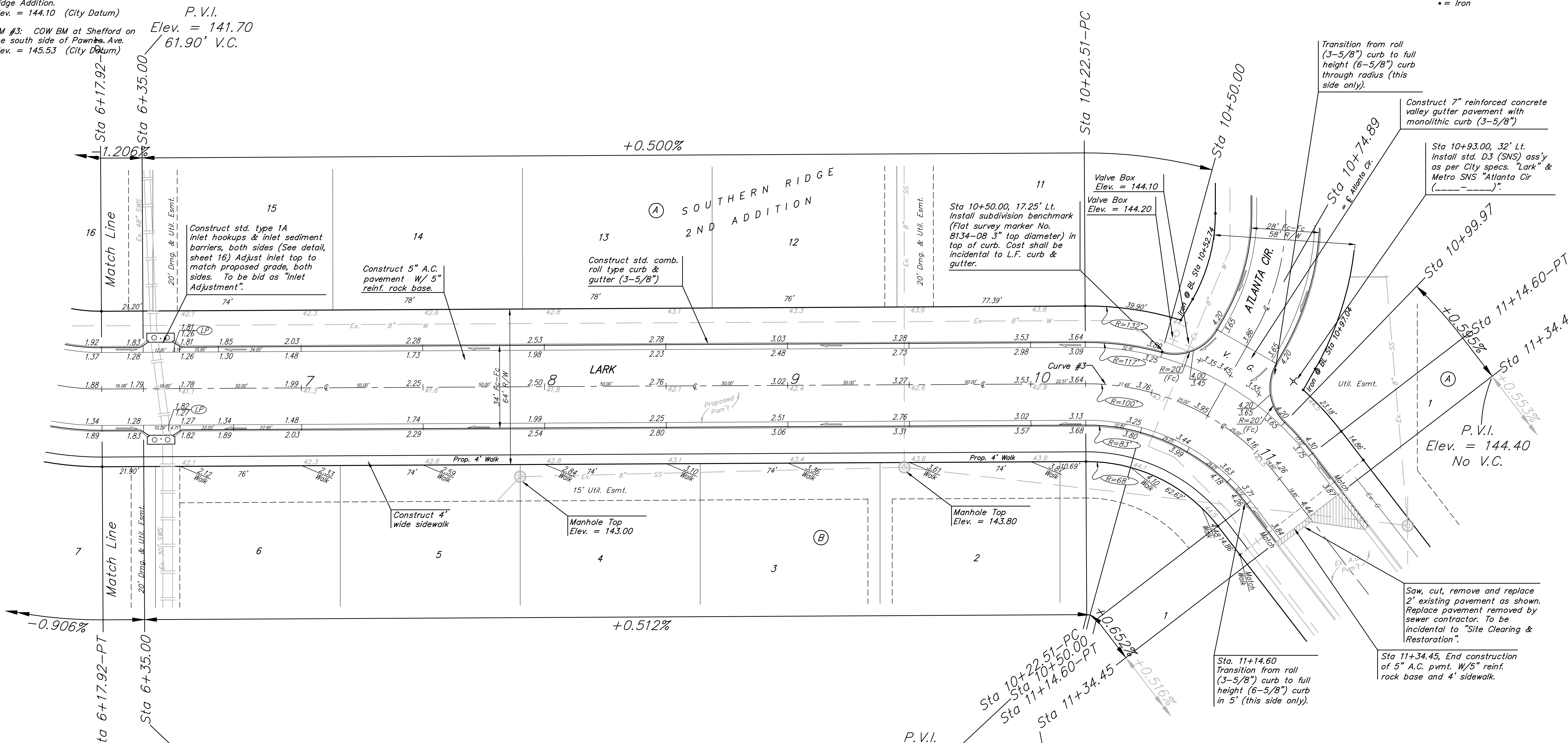


BENCHMARKS:
 BM #1: COW Disc at South West Corner of the Intersection of Lark & Atlanta.
 Elev. = 145.20 (City Datum)

BM #2: COW Disc at North West side of Westgate at South End of Lot 13 Block "B" Southern Ridge Addition.
 Elev. = 144.10 (City Datum)

BM #3: COW BM at Shefford on the south side of Pawnee Ave.
 Elev. = 145.53 (City Datum)

Scale: 1" = 20'
 • = Iron



Curve #3
 Curve Data Based on Centerline
 Rad. = 100' Delta = 52° 45' 52" Tangent = 49.60'
 Arc = 92.09' L.C. = 88.87' Def/Ft. = 17.18898 Min.

Station	Arc	FACE CHORD LENGTHS		Defl.	T. Defl.
		8' Lt.	8' Rt.		
10+22.51	-	-	-	0'00'00"	0'00'00"
10+25.00	2.49'	3.11'	1.87'	0'42'48"	0'42'48"
10+50.00	25.00'	31.17'	18.70'	7'09'43"	7'52'31"
10+74.89	24.89'	31.03'	18.62'	7'07'50"	15'00'21"
10+99.97	25.08'	31.27'	18.76'	7'11'06"	22'11'27"
11+14.60	14.63'	18.27'	10.96'	4'11'28"	26'22'56"

NOTE: ROLL TYPE CURB & GUTTER TO BE CONSTRUCTED ON THE PAVEMENT SHOWN ON THIS SHEET. TOP OF CURB ELEVATIONS ARE GIVEN FOR FULL HEIGHT CURB.

Baughman SOUTHERN RIDGE 2ND ADD. - PH 1
LARK
 STA 6+17.92 TO STA 11+34.45

Baughman Company, P.A. 315 Ellis St. Wichita, KS 67211 P 316262-7771 F 316262-0149
 ENGINEERING | SURVEYING | PLANNING | LANDSCAPE ARCHITECTURE

PROJECT NUMBER 472-84097	DESIGN AEG	DRAWN TMS
REVISIONS:	APPROVED	DATE 01/05
	SCALE Noted	SHEET 7 OF 29

SouthernRidge2nd/Sr2 04-08-E046