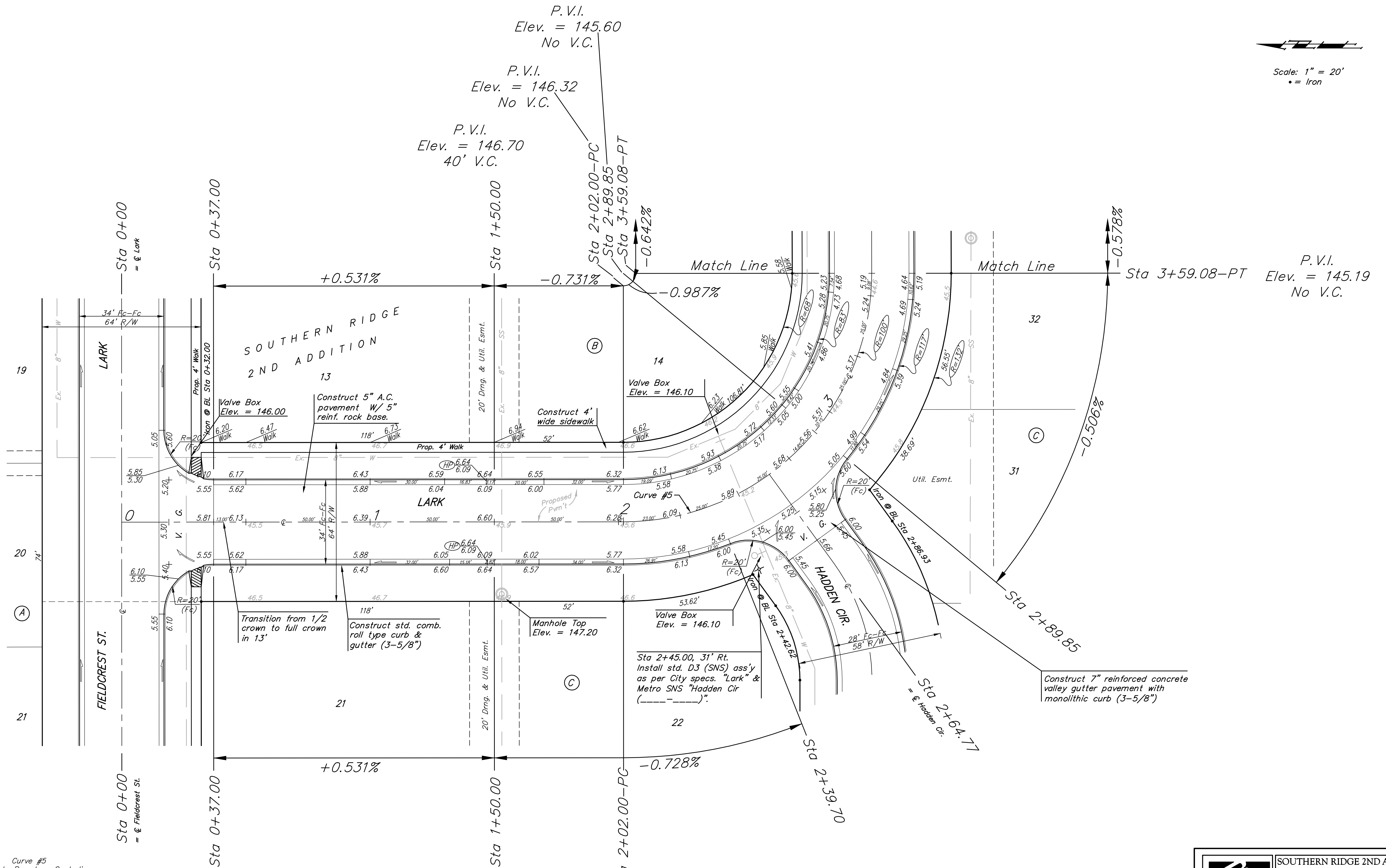


BENCHMARKS:
 BM #1: COW Disc at South West Corner of the Intersection of Lark & Atlanta.
 Elev. = 145.20 (City Datum)

BM #2: COW Disc at North West side of Westgate at South End of Lot 13 Block "B" Southern Ridge Addition.
 Elev. = 144.10 (City Datum)

BM #3: COW BM at Shefford on the south side of Pawnee Ave.
 Elev. = 145.53 (City Datum)

Scale: 1" = 20'
 • = Iron



Curve #5
 Curve Data Based on Centerline
 Rad. = 100' Delta = 90°00'00" Tangent = 100.00'
 Arc = 157.08' L.C. = 141.42' Def/Ft. = 17.18869 Min.

Station	Arc	FACE CHORD LENGTHS		Defl.	T. Defl.
		8' Lt.	8' Rt.		
2+02.00	-	-	-	0°00'00"	0°00'00"
2+25.00	23.00'	17.21'	28.69'	6°35'20"	6°35'20"
2+39.70	14.70'	11.02'	18.36'	4°12'40"	10°48'01"
2+64.77	25.07'	18.75'	31.26'	7°10'55"	17°58'56"
2+89.85	25.08'	18.76'	31.27'	7°11'05"	25°10'01"
3+00.00	10.15'	7.61'	12.68'	2°54'28"	28°04'29"
3+25.00	25.00'	18.70'	31.17'	7°09'43"	35°14'12"
3+50.00	25.00'	18.70'	31.17'	7°09'43"	42°23'55"
3+59.08	9.08'	6.81'	11.35'	2°36'04"	44°59'60"

P.V.I.
 Elev. = 146.70
 36' V.C.

NOTE: ROLL TYPE CURB & GUTTER TO BE CONSTRUCTED ON THE PAVEMENT SHOWN ON THIS SHEET. TOP OF CURB ELEVATIONS ARE GIVEN FOR FULL HEIGHT CURB.

Baughman SOUTHERN RIDGE 2ND ADD. - PH 1
LARK
 STA 0+00 TO STA 3+59.08

Baughman Company, P.A. 315 Ellis St. Wichita, KS 67211 P 316262-7771 F 316262-0149
 ENGINEERING | SURVEYING | PLANNING | LANDSCAPE ARCHITECTURE

PROJECT NUMBER 472-84097	DESIGN AEG	DRAWN TMS
REVISIONS:	APPROVED	DATE 01/05
	SCALE Noted	
	SHEET	9 OF 29

SouthernRidge2nd/Std 04-08-E046