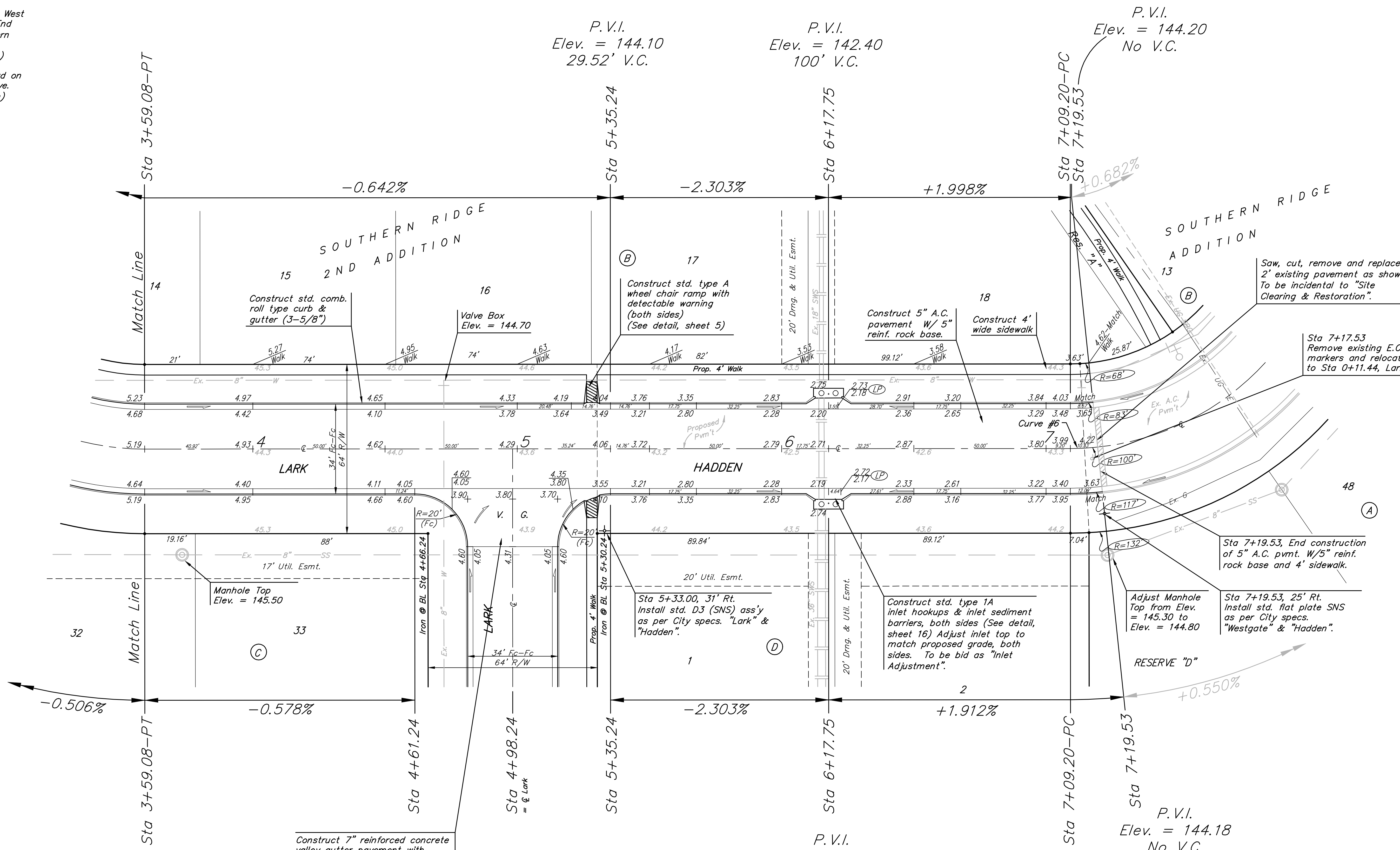
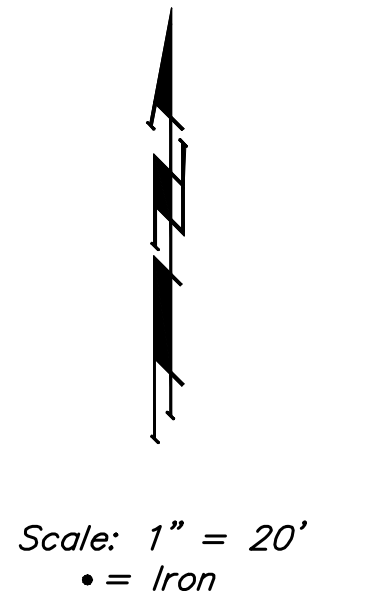


BENCHMARKS:
 BM #1: COW Disc at South West Corner of the Intersection of Lark & Atlanta.
 Elev. = 145.20 (City Datum)

BM #2: COW Disc at North West side of Westgate at South End of Lot 13 Block "B" Southern Ridge Addition.
 Elev. = 144.10 (City Datum)

BM #3: COW BM at Shefford on the south side of Pawnee Ave.
 Elev. = 145.53 (City Datum)



P.V.I.
 Elev. = 145.19
 No V.C.

Construct 7" reinforced concrete valley gutter pavement with monolithic curb (3-5/8")

P.V.I.
 Elev. = 142.40
 100' V.C.

P.V.I.
 Elev. = 144.18
 No V.C.

Curve #6
 Curve Data Based on Centerline
 Rad. = 100' Delta = 5° 55' 14" Tangent = 5.17'
 Arc = 10.33' L.C. = 10.33' Def/ft. = 17.19426 Min.

Station	Arc	FACE CHORD LENGTHS		Def.	T. Def.
		8' Lt.	8' Rt.		
7+09.20	-	-	-	0'00"00"	0'00"00"
7+19.53	10.33'	7.75'	12.91'	2'57"37"	2'57"37"

NOTE: ROLL TYPE CURB & GUTTER TO BE CONSTRUCTED ON THE PAVEMENT SHOWN ON THIS SHEET. TOP OF CURB ELEVATIONS ARE GIVEN FOR FULL HEIGHT CURB.

Baughman		SOUTHERN RIDGE 2ND ADD. - PH 1	
		LARK/HADDEN	
		STA 3+59.08 TO STA 7+19.53	
Baughman Company, P.A. 315 Ellis St. Wichita, KS 67211 P 316262-7771 F 316262-0149			
ENGINEERING SURVEYING PLANNING LANDSCAPE ARCHITECTURE			
PROJECT NUMBER 472-84097	DESIGN AEG	DRAWN TMS	
REVISIONS:	APPROVED	DATE 01/05	
	SCALE Noted		
	SHEET		
	10	29	
SouthernRidge2nd/Se5		04-08-E046	