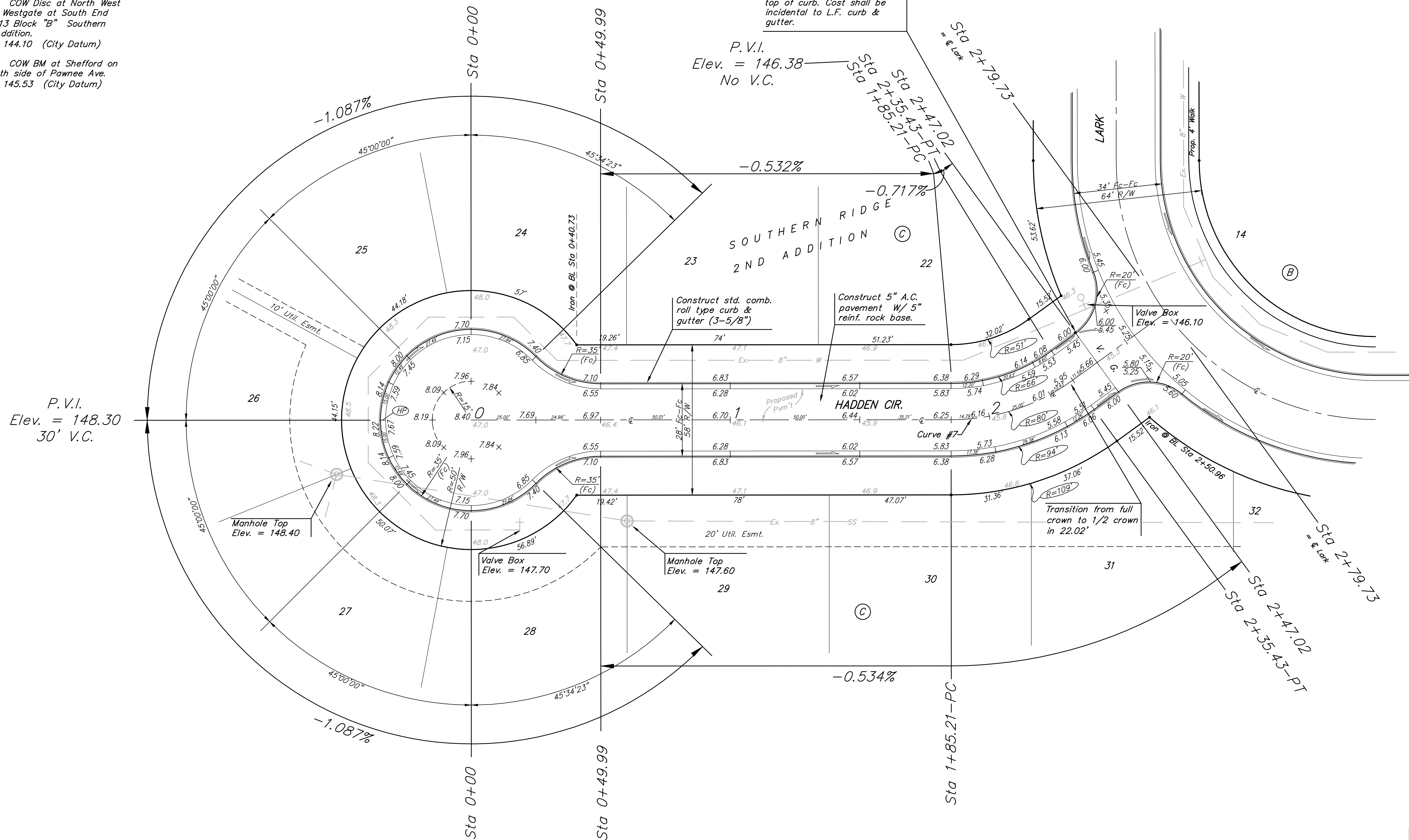


BENCHMARKS:
 BM #1: COW Disc at South West Corner of the Intersection of Lark & Atlanta. Elev. = 145.20 (City Datum)
 BM #2: COW Disc at North West side of Westgate at South End of Lot 13 Block "B" Southern Ridge Addition. Elev. = 144.10 (City Datum)
 BM #3: COW BM at Shefford on the south side of Pawnee Ave. Elev. = 145.53 (City Datum)

Sta 2+47.02, 14.25' Lt.
 Install subdivision benchmark (Flat survey marker No. 8134-08 3" top diameter) in top of curb. Cost shall be incidental to L.F. curb & gutter.

P.V.I.
 Elev. = 146.38
 No V.C.

Scale: 1" = 20'
 • = Iron



Curve #7

Curve Data Based on Centerline

Rad. = 80' Delta = 35° 58' 02" Tangent = 25.97'
 Arc = 50.22' L.C. = 49.40' Del/Ft. = 21.48580 Min.

Station	Arc	FACE CHORD LENGTHS		Defl.	T. Defl.
		8' Lt.	8' Rt.		
1+85.21	-	-	-	0°00'00"	0°00'00"
2+00.00	14.79'	10.71'	18.83'	5°17'46"	5°17'46"
2+25.00	25.00'	18.05'	31.75'	8°57'08"	14°14'55"
2+35.43	10.43'	7.56'	13.29'	3°44'06"	17°59'01"

NOTE: ROLL TYPE CURB & GUTTER TO BE CONSTRUCTED ON THE PAVEMENT SHOWN ON THIS SHEET. TOP OF CURB ELEVATIONS ARE GIVEN FOR FULL HEIGHT CURB.

	SOUTHERN RIDGE 2ND ADD. - PH 1	
	HADDEN CIR. STA 0+00 TO STA 2+79.73	
<small>Baughman Company, P.A. 315 Ellis St. Wichita, KS 67211 P 316262-7771 F 316262-0149 ENGINEERING SURVEYING PLANNING LANDSCAPE ARCHITECTURE</small>		
PROJECT NUMBER 472-84097	DESIGN AEG	DRAWN TMS
REVISIONS:	APPROVED	DATE 01/05
SCALE Noted		SHEET 11 OF 29
<small>SouthernRidge2nd/Std6</small>		<small>04-08-E046</small>