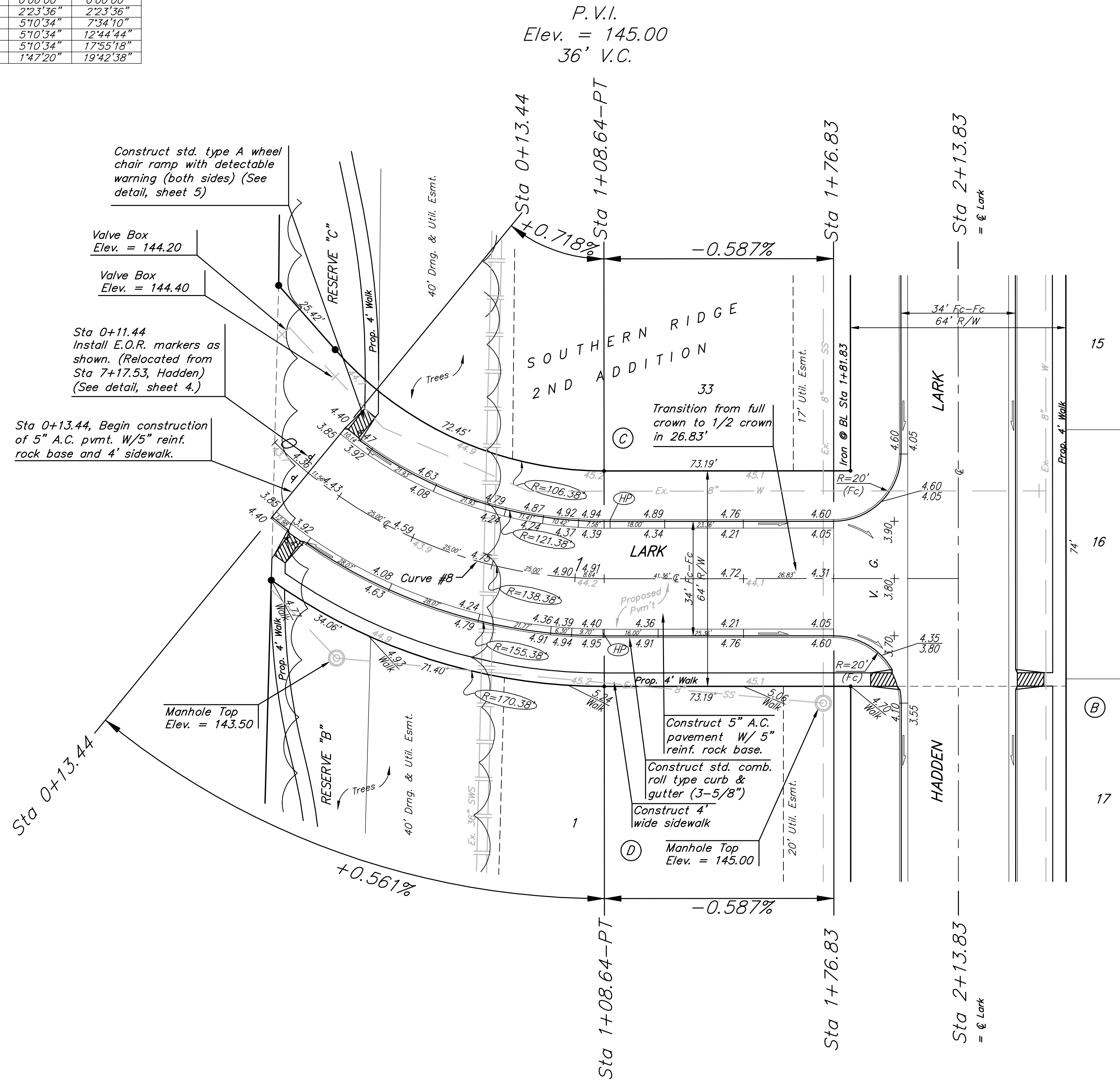
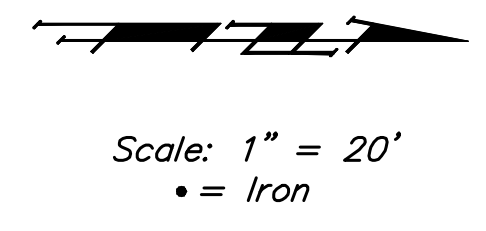


BENCHMARKS:
 BM #1: COW Disc at South West Corner of the Intersection of Lark & Atlanta.
 Elev. = 145.20 (City Datum)

BM #2: COW Disc at North West side of Westgate at South End of Lot 13 Block "B" Southern Ridge Addition.
 Elev. = 144.10 (City Datum)

BM #3: COW BM at Shefford on the south side of Pawnee Ave.
 Elev. = 145.53 (City Datum)

Curve #8 Curve Data Based on Centerline					
Rad. = 138.38' Delta = 39° 25' 16" Tangent = 49.58'					
Arc = 95.2' L.C. = 93.34' Def/Ft. = 12.42262 Min.					
Station	Arc	FACE CHORD LENGTHS		Defl.	T. Defl.
		B' Lt.	B' Rt.		
0+13.44	—	—	—	0°00'00"	0°00'00"
0+25.00	11.56'	9.47'	13.65'	2°23'36"	2°23'36"
0+50.00	25.00'	20.46'	29.48'	5°10'34"	7°34'10"
0+75.00	25.00'	20.46'	29.48'	5°10'34"	12°44'44"
1+00.00	25.00'	20.46'	29.48'	5°10'34"	17°53'18"
1+08.64	8.64'	7.08'	10.20'	1°47'20"	19°42'38"



P.V.I.
 Elev. = 145.00
 36' V.C.

P.V.I.
 Elev. = 145.00
 32' V.C.

Remove trees ONLY if approved by Engineer as necessary for street construction. Cost of removal to be incidental to lump sum bid item "Site Clearing & Restoration".

Subdivision Bench Marks		
Street & Station	Location Description	Elevation
Lark 3+18.48, 17.25' Lt.	Adjacent to Fire Hydrant between Lots 17-18, Block A	
Lark 10+50.00, 17.25' Lt.	Adjacent to Fire Hydrant at S. End of S. Curb Return of Lark & Atlanta Cir.	
Hadden Cir. 2+47.02, 14.25' Lt.	Adjacent to Fire Hydrant at W. End of N.W. Curb Return of Lark & Hadden Cir.	

NOTE: ROLL TYPE CURB & GUTTER TO BE CONSTRUCTED ON THE PAVEMENT SHOWN ON THIS SHEET. TOP OF CURB ELEVATIONS ARE GIVEN FOR FULL HEIGHT CURB.

	SOUTHERN RIDGE 2ND ADD. - PH 1	
	LARK STA 0+13.44 TO STA 2+13.83	
<small>Baughman Company, P.A. 315 Ellis St. Wichita, KS 67211 P 316262-7771 F 316262-0149 ENGINEERING SURVEYING PLANNING LANDSCAPE ARCHITECTURE</small>		
PROJECT NUMBER 472-84097	DESIGN AEG	DRAWN TMS
REVISIONS:	APPROVED DATE 01/05	SCALE Noted SHEET
		12 OF 29
<small>SouthernRidge2nd/Sr7</small>		<small>04-08-E046</small>