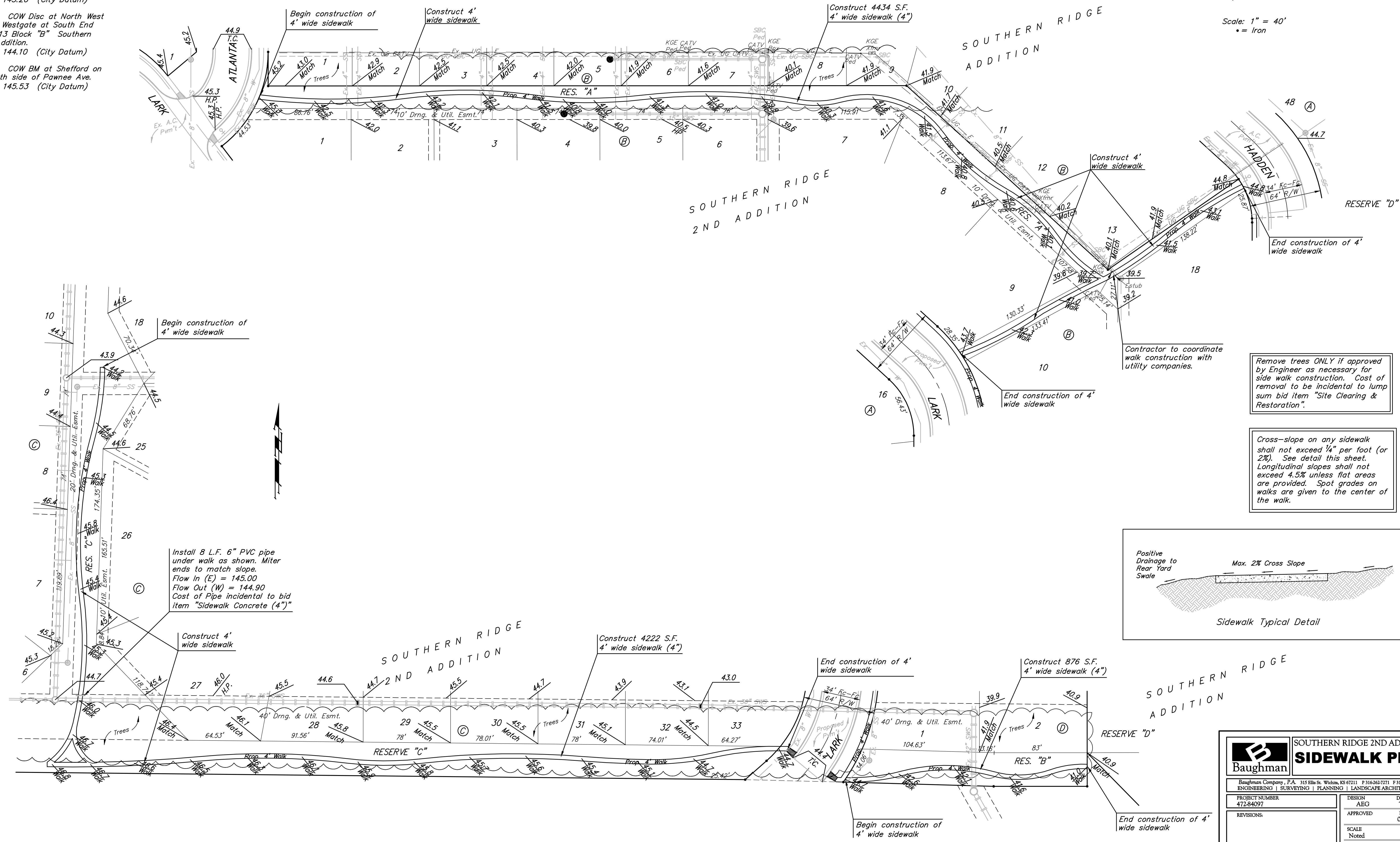
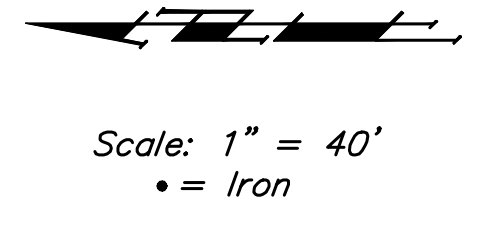


BENCHMARKS:
 BM #1: COW Disc at South West Corner of the Intersection of Lark & Atlanta.
 Elev. = 145.20 (City Datum)

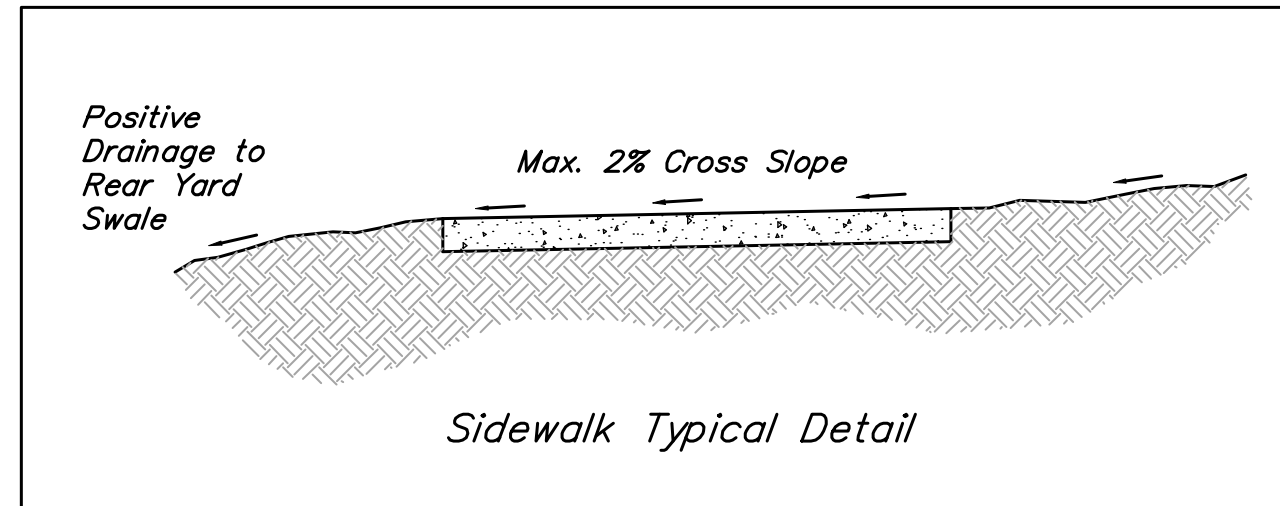
BM #2: COW Disc at North West side of Westgate at South End of Lot 13 Block "B" Southern Ridge Addition.
 Elev. = 144.10 (City Datum)

BM #3: COW BM at Shefford on the south side of Pawnee Ave.
 Elev. = 145.53 (City Datum)



Remove trees ONLY if approved by Engineer as necessary for sidewalk construction. Cost of removal to be incidental to lump sum bid item "Site Clearing & Restoration".

Cross-slope on any sidewalk shall not exceed 1/4" per foot (or 2%). See detail this sheet. Longitudinal slopes shall not exceed 4.5% unless flat areas are provided. Spot grades on walks are given to the center of the walk.



Install 8 L.F. 6" PVC pipe under walk as shown. Miter ends to match slope.
 Flow In (E) = 145.00
 Flow Out (W) = 144.90
 Cost of Pipe incidental to bid item "Sidewalk Concrete (4")"

SOUTHERN RIDGE 2ND ADD. - PH 1
SIDEWALK PLAN

Baughman Company, P.A. 315 Ellis St. Wichita, KS 67211 P 316-262-7771 F 316-262-0149	
ENGINEERING SURVEYING PLANNING LANDSCAPE ARCHITECTURE	
PROJECT NUMBER 472-84097	DESIGN DRAWN AEG TMS
REVISIONS:	APPROVED DATE 01/05
	SCALE Noted
	SHEET 13 OF 29