

# Bickel St., 8th and Gow STREET IMPROVEMENTS

Project Number  
472-84062

OCA NO.: 765904  
Water Line OCA NO.: 636141

CITY OF WICHITA, KANSAS  
Jim Armour, P.E., Acting City Engineer

Index of Sheets:

- 1 Title Sheet
- 2 Pavement Detail
- 3 Driveway Details
4. BMPs
5. Erosion Control Plan
6. Paving Plan 0+00-6+00, Bickel St.
7. Paving Plan 6+00-11+22, 8th St.
8. Paving Plan 20+00-23+09.50, Gow St.
9. Storm Sewer
10. Type1-A Curb Inlet
- 11-14. Cross Sections
- 14A Water Line Improvements

GENERAL NOTES

1. Contractor will be required to provide notice to utility companies a minimum of twenty-four (24) hours prior to any excavation, as follows:

Kansas One-Call 687-2470

The Contractor must notify the following in case of an emergency:

- |                                     |                |
|-------------------------------------|----------------|
| Cox Communications                  | 262-4270       |
| or                                  | 263-2061       |
| Westar Energy/                      |                |
| Kansas Gas & Electric Company       | 1-888-482-4950 |
| Southwestern Bell Telephone Company | 1-571-2611     |
| City of Wichita Water Department    | 268-4908       |
| City of Wichita Sewer Department    | 268-4071       |
| Aquila Natural Gas                  | 942-8811       |
| or                                  | 1-800-303-0357 |

2. Exist. utilities and their locations, as shown on the plans, represent the best information obtainable for design. Location information has been obtained from the various utility companies and is either from company record drawings or company-provided field locations. The Contractor will be required to work around existing utilities which do not conflict with proposed construction.

3. The Contractor to verify utility locations prior to construction of this project.

4. Utility service and installation shall be coordinated with the respective utility owners. Contacts are:

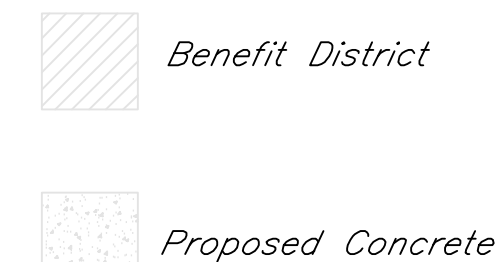
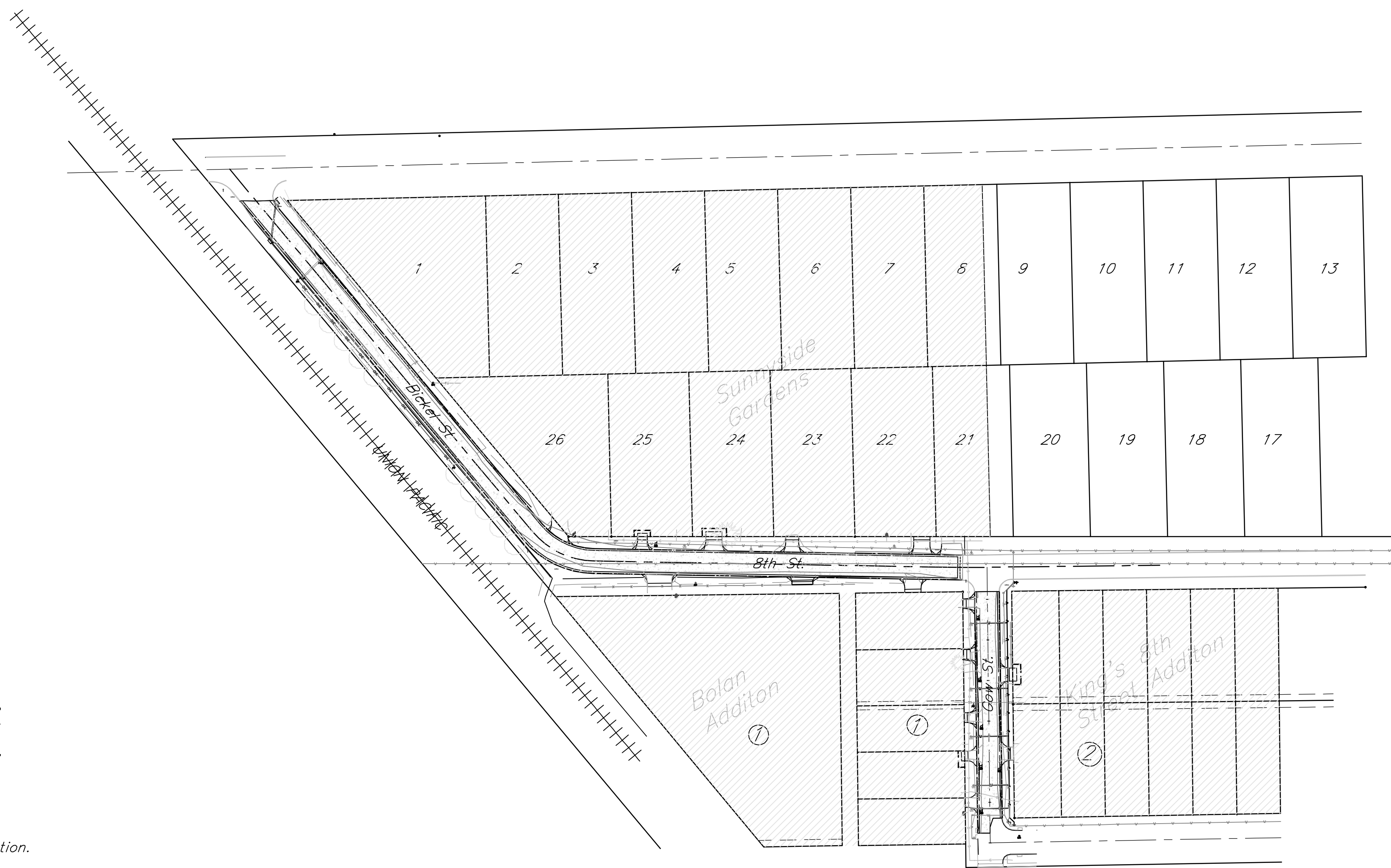
- |                    |               |          |
|--------------------|---------------|----------|
| Kansas Gas Service | Charlene Pint | 832-3121 |
| Westar Energy      | Miles Capps   | 261-6251 |
| Aquila Networks    | Calvin Briggs | 942-8811 |
| Wichita Water      | Paul Bryant   | 268-4555 |
| Southwestern Bell  | Jim Toben     | 268-2759 |
| Cox Communications | Brian Ring    | 262-4270 |

5. All lawn/turf areas disturbed by construction of proposed improvements shall be restored with seed. All seeding work shall be in accordance with the City of Wichita standard specifications and the City of Wichita administrative regulation No. AR78 which governs cleanup and replacement following construction. All costs for this work shall be subsidiary to the lump sum price bid for "Site Restoration."

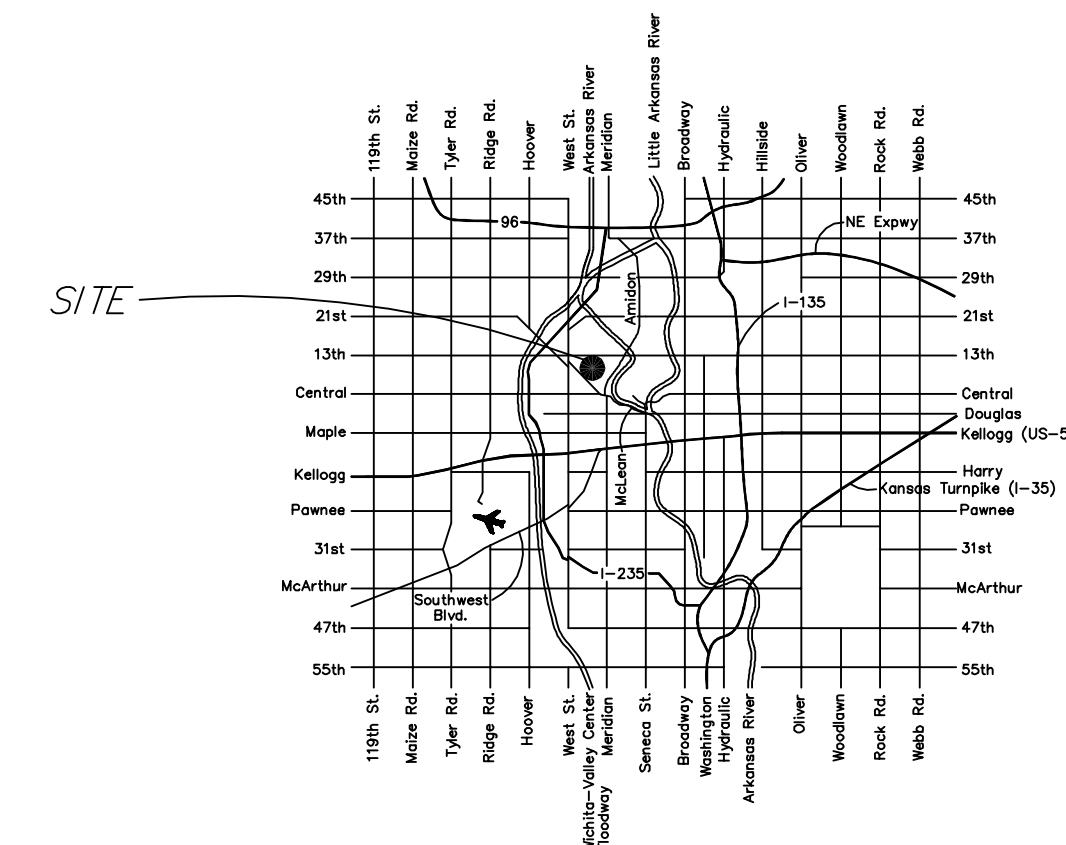
6. Traffic affected by the construction of this project shall be handled in accordance with the latest edition of the Manual on Uniform Traffic Control Devices.

7. All commercial signs to be moved by others prior to construction.

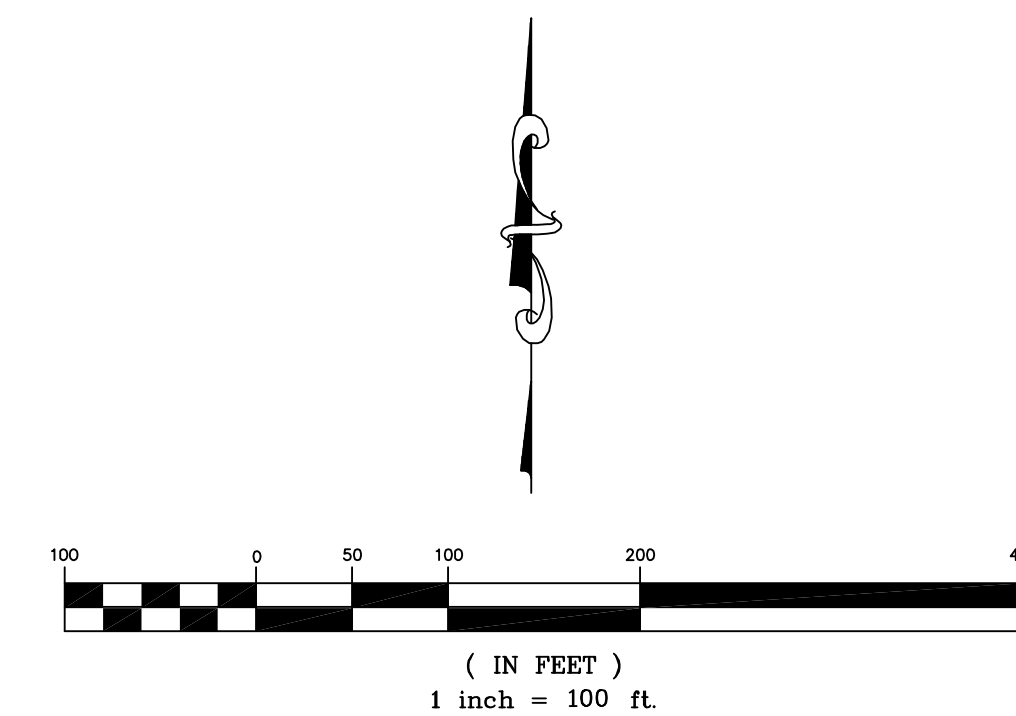
8. Properties within the project may have underground irrigation systems (lawn sprinklers) which conflict with new construction. Contractor shall remove such components as needed during construction of the project. The irrigation system shall be reinstalled in like kind before project completion. Any irrigation system modifications required because of project improvements shall be coordinated with the property owner. Portions of underground irrigation systems not in conflict with new construction shall be protected from damage and shall remain in place. All work related to underground irrigations/sprinklers shall be subsidiary to Site Restoration.



January 2005



City of Wichita



Benchmark:  
COW BM. SE Corner of Sheridan  
& 9th St. N. 20' S & 43.3' E of  
Centerlines.  
Elev. 120.70 City Datum

RR Spike in SE Face of HLP,  
SW of Intx of 9th N and Bickel  
Elev. 123.82 City Datum

RR Spike in N Side of PP, E of  
Bickel, S Side of 8th St. N, N side  
of "Arrowhead Storage", Between #3512  
and #3432 8th St.  
Elev. 121.81 City Datum

RR Spike in SW Side of Light Pole, NE  
Corner of Intx of Gow and Murdock  
Elev. 120.95 City Datum



516 S. Market,  
Wichita, KS 67202

316/264-0242