

GENERAL NOTES:

1. Contractor will be required to provide notice to utility companies a minimum of twenty-four (24) hours prior to any excavation, as follows:

Kansas One-Call 687-2470

The Contractor must notify the following in case of an emergency:

Cox Communications 262-4270
 Kansas Gas Service 1-888-482-4950
 Westar Energy 383-8650
 Aquia Energy 1-888-482-4950
 Southwestern Bell 268-2245
 City of Wichita Water Dept. 268-4563
 City of Wichita Sewer Maint. 268-4024
 City of Wichita Storm Sewer Maint. 268-4090
 City of Wichita Traffic Maint. 268-4034
 Conoco Pipeline Co. 1-800-231-2551
 Williams Pipeline Co. 529-6600
 Phillips Pipeline Co. 1-800-766-8230

2. Utility service lines, poles, valve boxes, meters, and etcetera are to be adjusted as necessary by others prior to construction unless the plans specifically call for their adjustment by the Contractor or unless the plans specifically identify a utility to be adjusted by its owner during construction. Existing utilities and their location, as shown on the plans, represent the best information obtainable for design. The contractor will be required to work around existing utilities within the right-of-way which do not conflict with proposed construction.

3. Trees and shrubs in public right-of-way which are in direct conflict with proposed new construction shall be removed by the Contractor with the Engineer's approval. Trees and shrubs which are not in direct conflict with proposed new construction shall be saved and protected from damage.

4. All areas disturbed by construction shall be seeded at 300 lbs./acre with Rye Grass immediately following construction in that area. Contractor shall prepare ground per City specifications.

5. Rubble from the removal of miscellaneous structures and excess excavation which is to be wasted shall be disposed of on sites to be provided by the Contractor. These sites shall be approved by the Engineer as to suitability, appearance and site location. Locations that, in the opinion of the Engineer, will leave an unsightly appearance will not be approved. All disposal sites must be approved by the Kansas Department of Health and Environment. Material either stockpiled or disposed of in a flood plain would require a Kansas State Board of Agriculture permit. Any material dumped in waters of the United States or wetlands is subject to U.S. Corps. of Engineers permitting regulations. Any material buried or stockpiled beyond approved construction limits would require additional archaeological investigations unless buried in a previously approved borrow location.

6. The Contractor shall be responsible for preserving property irons. The Contractor will be required to re-establish any property irons which are damaged or destroyed by his construction operations. Such irons shall be re-established by a licensed land surveyor in accordance with state law.

7. A saw cut of at least one-half the depth of existing surface courses or one-fourth the depth of the existing total pavement thickness shall be provided at locations where proposed construction abuts as existing surface course or pavement for which partial removal of that surface or pavement is required. Sawed joints to facilitate removal within three (3) feet of existing joints will not be permitted and for such instances the limits of removal shall extend to the existing joint. Such saw cuts will not be paid for directly and this cost shall be considered as subsidiary to the removal of the surface or pavement.

STREET PAVING FOR 27TH STREET NORTH

1. From the West Line of Lot 1, Jackson Avenue in F. C. McTaggart's Addition to the middle of the intersection of 27th and Jackson
2. From the middle of the intersection of 27th and Jackson to the middle of the intersection of 27th and Waco
3. From the middle of the intersection of 27th and Waco to the East Line of Fairview (Wichita St)
4. From the West Line of Wellington to the West Line of Market to serve

1. Lots 3 through 6 in North Court Addn., and Lots 1 through 23 along West Side of Jackson Avenue in McTaggart's Addn.
2. Lots 6 through 12 in North Court Addn. and Lots 1 through 24 between Jackson and Waco Avenues, McTaggart's Addn., an Unplatted parcel A-8679-70B
3. An Unplatted parcel A-8679-70B, Lots 1 through 24 between Waco Avenue and Fairview (Wichita St), McTaggart's Addn.
4. Lots 27 through 52, Blocks F and G, Montrose Park Addn., Lots 175 through 183, North Lawn Addn., Aley Park, Lots 60 through 70, Aley Park Addn.

CITY OF WICHITA, KANSAS

Jim Armour, P.E. Acting City Engineer

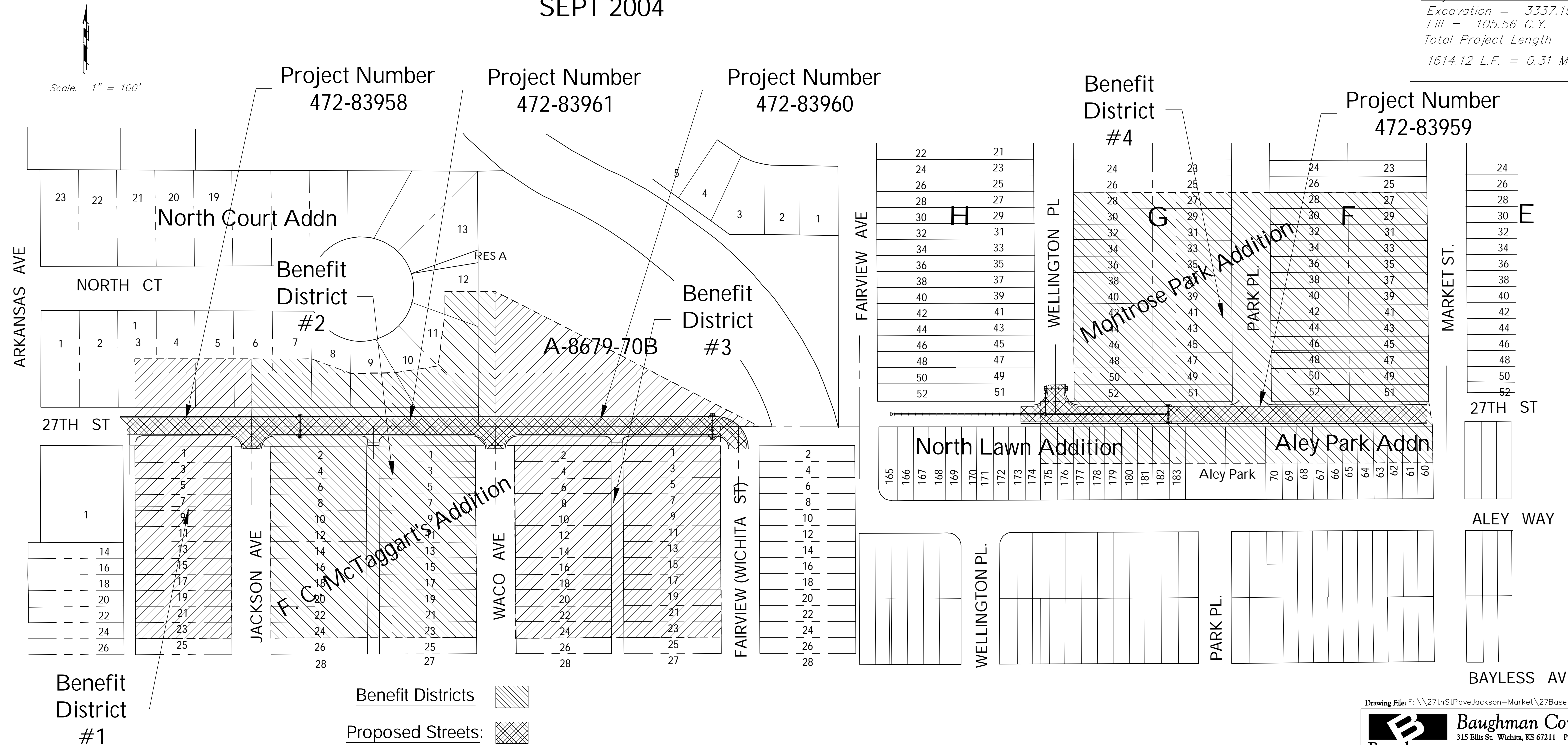
Project Numbers

472-83958, 472-83961, 472-83960, & 472-83959

O.C.A. Numbers

765868, 765869, 765870, & 765871

SEPT 2004



Benchmarks

C.O.W. benchmark, intersection CL of 27th & Wellington
 Elev. = 125.43 City Datum

C.O.W. benchmark, Thimble @ intersection CL of 27th & Market
 Elev. = 126.52 City Datum

C.O.W. benchmark, RR Spike NW face PP @ 27th & Fairview (Wichita St)
 Elev. = 127.49 City Datum

C.O.W. benchmark, intersection CL of 27th & Fairview (Wichita St)
 Elev. = 125.75 City Datum

C.O.W. benchmark, intersection CL of 27th & Waco Ave
 Elev = 126.95 City Datum

C.O.W. benchmark, intersection CL of 27th & Jackson Ave
 Elev. = 126.82 City Datum

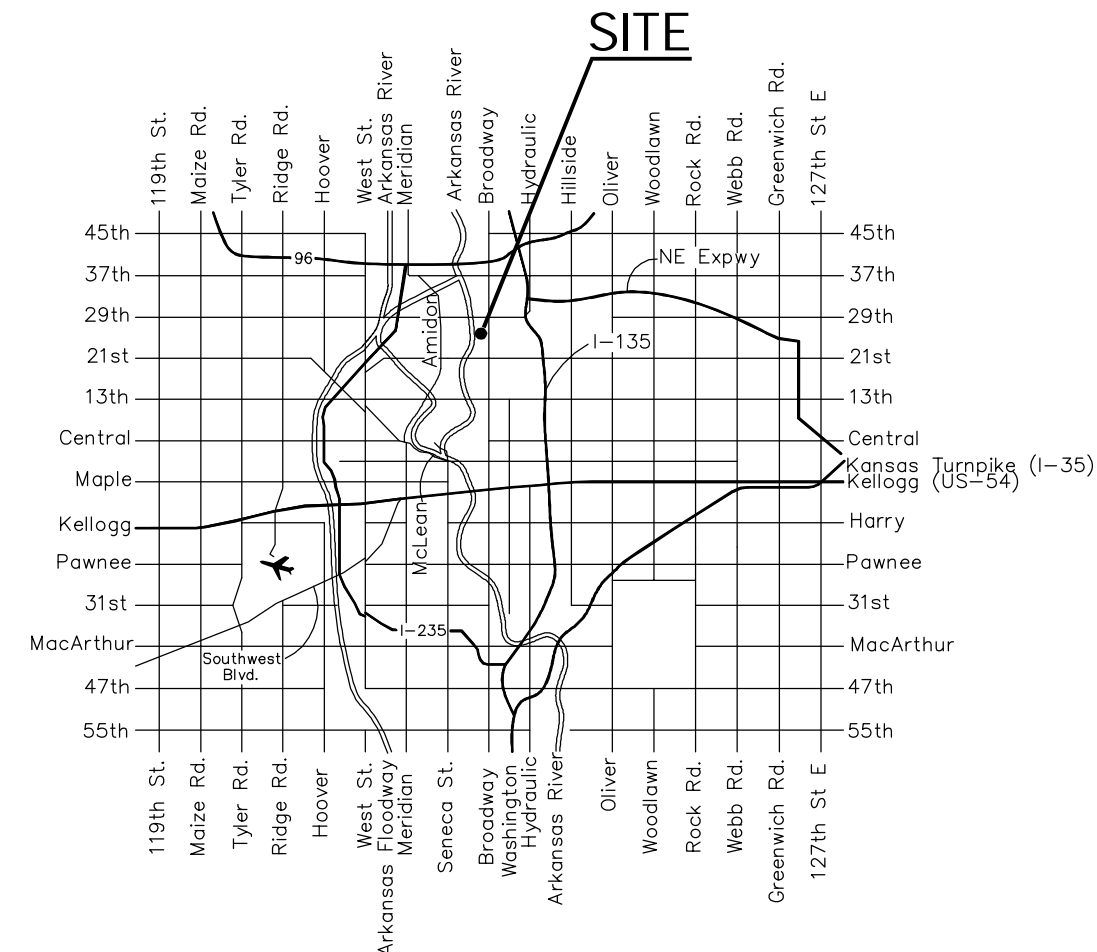
C.O.W. benchmark, RR Spike NW face PP @ Alley West of 27th & Jackson
 Elev. = 127.57 City Datum

Sheet Index

Title Sheet	1
Pavement Typical Sections	2-3
Valley Gutter Detail	4
Standard Drive Detail	5
Plan Sheets	6-9
SWS Plan/Profile	10-12
SWS Detail Sheets	13-17
Soil Erosion BMPs	18-20
Earthwork	21-24

Project Earthwork Totals
 Excavation = 3337.19 C.Y.
 Fill = 105.56 C.Y.
 Total Project Length
 1614.12 L.F. = 0.31 Miles

Scale: 1" = 100'



Vicinity Map