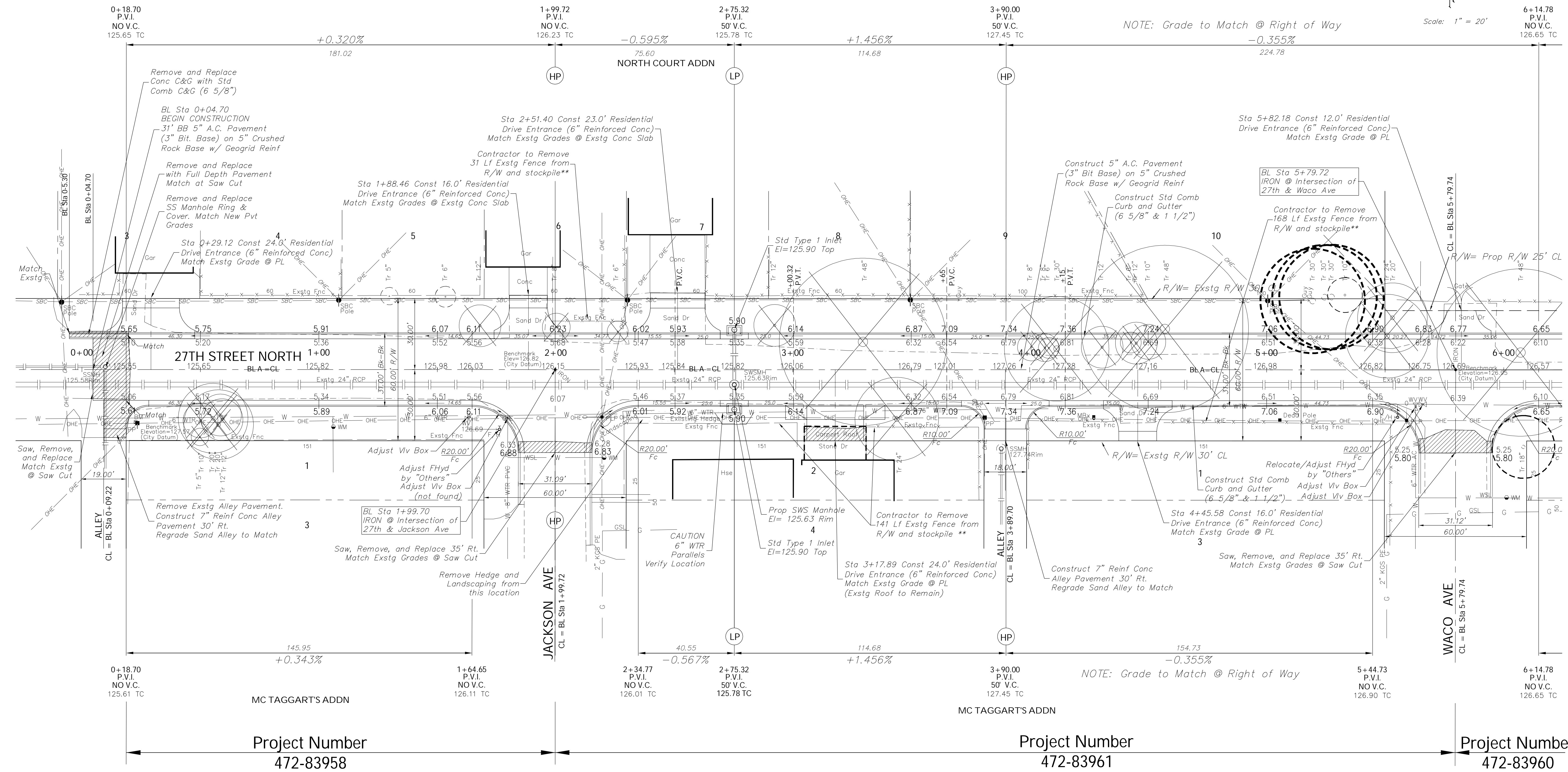
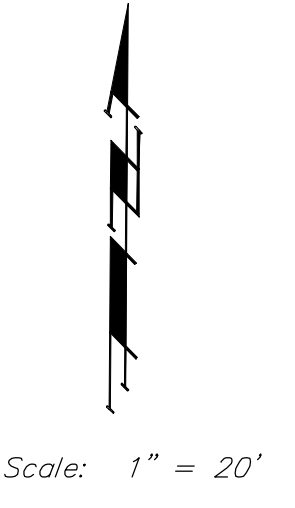


Benchmarks
 C.O.W. benchmark, RR Spike NW face
 PP @ Alley West of 27th & Jackson
 Elev. = 127.57 City Datum
 C.O.W. benchmark, intersection CL of
 27th & Jackson Ave
 Elev. = 126.82 City Datum
 C.O.W. benchmark, intersection CL of
 27th & Waco Ave
 Elev. = 126.95 City Datum



****NOTE:**
 Contractor to Remove Existing Fence from R/W and stockpile at a location on owner's property as directed by the Property Owner. DO NOT REPLACE. Fence removal incidental to Right of Way Clearing

NOTE:
 Contractor to Contact and Coordinate with City of Wichita Water Dept. prior to start of construction for Fire Hydrant and Water Line Relocations and adjustment.

NOTE:
 Contractor to Relocate any informational signs on the project that are in conflict with construction. Cost to be incidental to Right-of-way clearing.

Drawing File: F:/Eng/27thStPave/27thStPave/27BASE_E1
 Design: JFB
 Drawn: SGS
 Approved: JFB
 Scale: 1:20
 Project No. 04.05.E886 CAPITAL IMPROVEMENT PROJECT
27TH STREET NORTH PAVING IMPROVEMENTS
 West of Jackson to Waco
 PROJECT DESCRIPTION
 Project No. 472-83958 & 83961

Baughman Company, P.A.
 315 Ellis St. Wichita, KS 67211 P 316-262-7271 F 316-262-0149
 ENGINEERING | SURVEYING | PLANNING | LANDSCAPE ARCHITECTURE

SHEET
 OF
6
 24