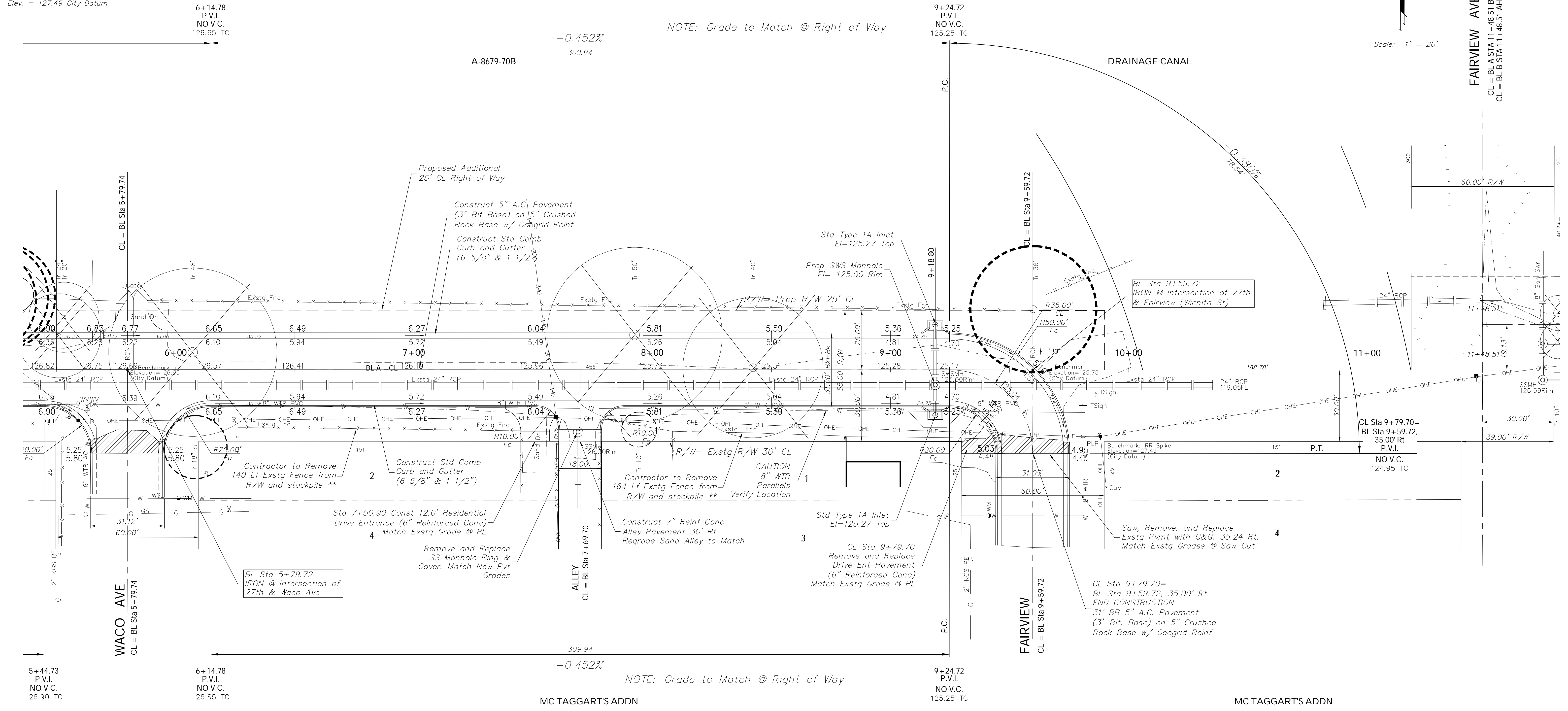
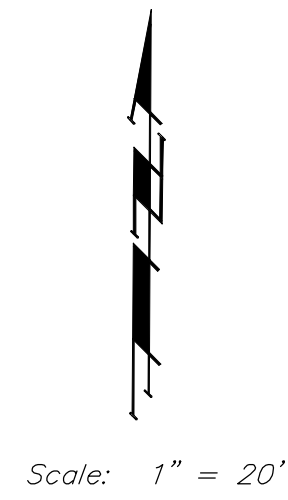


**Benchmarks**  
 C.O.W. benchmark, intersection CL of 27th & Waco Ave  
 Elev = 126.95 City Datum  
 C.O.W. benchmark, intersection CL of 27th & Fairview (Wichita St)  
 Elev. = 125.75 City Datum  
 C.O.W. benchmark, RR Spike NW face PP @ 27th & Fairview (Wichita St)  
 Elev. = 127.49 City Datum



Project Number  
472-83961

Project Number  
472-83960



**\*\*NOTE:**  
 Contractor to Remove Existing Fence from R/W and stockpile at a location on owner's property as directed by the Property Owner. DO NOT REPLACE. Fence removal incidental to Right of Way Clearing

**\*\*NOTE:**  
 Contractor to Contact and Coordinate with City of Wichita Water Dept. prior to start of construction for Fire Hydrant and Water Line Relocations and adjustment.

**NOTE:**  
 Contractor to Relocate any informational signs on the project that are in conflict with construction. Cost to be incidental to Right-of-way clearing.