

GENERAL NOTES:

- Contractor will be required to provide notice to utility companies a minimum of twenty-four (24) hours prior to any excavation, as follows:

Kansas One-Call (316)687-2470

The Contractor must notify the following in case of an emergency:

Cox Communications (316)262-4270
or (316)263-2061

Westar Energy/
Kansas Gas & Electric Company (800)482-4950
AT&T 1-555-1212
City of Wichita Water Department (316)268-4908
City of Wichita Sewer Department (316)268-4071
Aquila Natural Gas (316)941-1608
or (800)303-0357

- Exist. utilities and their locations, as shown on the plans, represent the best information attainable for design. Location information has been obtained from the various utility companies and is either from company record drawings or company-provided field locations. The Contractor will be required to work around existing utilities which do not conflict with proposed constructions.

- The Contractor to verify utility locations prior to construction of this project.

- Utility service and installation shall be coordinated with the respective utility owner. Contacts are:

Kansas Gas Service Jim Coe (316)832-3126
Westar Energy Miles Capps (316)261-6251
Aquila Networks Calvin Briggs (316)942-8811
Wichita Water & Sewer Kerry Gibson (316)268-4555
AT&T Jim Toben (316)268-2759
Cox Communications Mark Anaya (316)262-4270

- All lawn/turf areas disturbed by construction of proposed improvements shall be restored with the same grass as existing. Restoration of disturbed areas shall include, but not limited to, soil preparation, fertilizing, seeding, mulching (all seeded areas, outside the limits of erosion mat placement), and/or reseeded, and installation of erosion control mat. All seeding work shall be in accordance with the City of Wichita Standard Specifications and the City of Wichita Administrative Regulations No. AR 6.5 which governs cleanup and respiration or replacement following construction. All cost for the soil preparation, seeding and mulching (all seeded areas, outside the limits of erosion mat placement) shall be paid for through the lump sum bid item for "Seeding." All seeded areas within eight feet of the back of new curb shall be covered with an approved erosion mat, which shall be paid for by the measured quantity bid item "Back of Curb Protection (8' wide)."

- Traffic affected by the construction of this project shall be handled in accordance with the latest edition of the Manual on Uniform Traffic Control Devices.

- It is the contractor's responsibility to visit this site to better understand the extent of site clearing and restoration to be performed. Site Clearing and Restoration shall include all costs for removal of items which a pay item is not provided.

- The contractor shall be responsible for preserving property irons. The contractor will be required to re-establish any property irons which are damaged or destroyed by the construction operations. Such irons shall be re-established by a licensed land surveyor in accordance with state laws.

- Properties within the project limits may have underground sprinkler systems in public right-of-way which conflict with new construction. Contractor will be required to remove such improvements should they not be removed by their owner at the time of construction of the project. The contractor will be required to salvage all sprinkler heads and/or valves and give such material to owner. Portions of underground sprinkler systems not in conflict with new construction shall be protected from damage and shall remain in place. All work in connection with underground sprinkler systems shall be considered as subsidiary to the contract pay items for work.

- Cuts made in paved surfaces on public property will be repaired by the City's Contractor and charged against the contractor. Unit Repair prices are available from the city at 268-4418. A surcharge may be applicable. Call 268-4418 for details. Repair costs to be paid prior to release of utility service if utilities are effected.

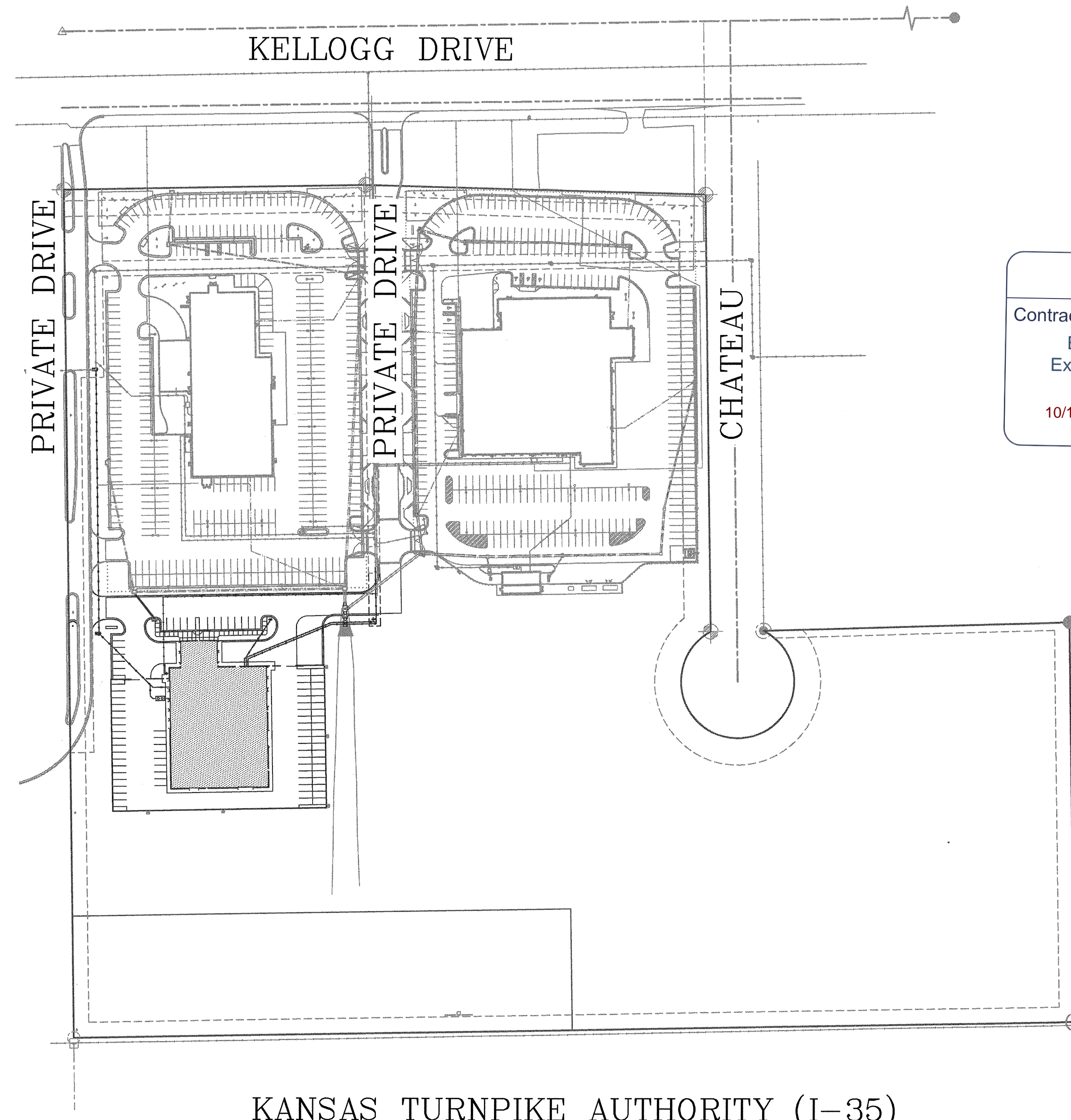
SANITARY SEWER TO SERVE DAVIS-MOORE COLLISION CENTER EAST E. KELLOGG DRIVE 2134 PPS (607861) CITY OF WICHITA, KANSAS Gary Janzen, P.E., Interim City Engineer



LOCATION MAP
(For Visual Use Only)

Index of Sheets:

- C3.0 Cover Sheet
- C3.1 Site Overview Sheet
- C3.2 Plan & Profiles
- C3.3 Manhole Details
- C3.4 Manhole Lid Details
- C5.0 Erosion Control Plan
- C5.1 Erosion Details
- C5.2 Erosion Details
- C5.3 Erosion Details
- C6.0 Recorded Plat



T. Mason - City of Wichita, Inspector
Stub
Release Date: 10/24/2012
APRosas 10/25/2012

AS BUILTS	
Contractor: Ewertz Excavation 10/17/2012	Project Inspector: Larry Gann 516 S. Market, Wichita, KS 67202 (316)264-0242

Benchmarks:

- CITY BENCHMARK:**
Disc- Kellogg and Greenwich, Southeast corner of intersection. Northwest corner of traffic signal light pole base.
48.60' NNW of SS Manhole.
48.70' S of traffic signal MH in median.
70.50' E of BOC on E side of median.
Elev. = 1352.81 NAVD88
- SITE BENCHMARK:**
"4" Cut On North end of nose of island.
61 feet North of the Northwest corner of Davis Moore Mazda.
Elev. = 1361.20 NAVD88

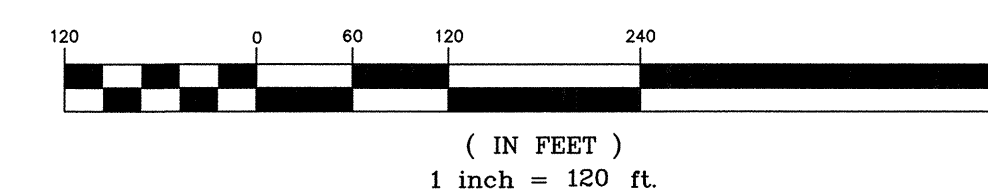
APPROVED AS NOTED
City Engineers
Office: *Julianne Kallman 8-15-12*

NOTE TO CONTRACTORS

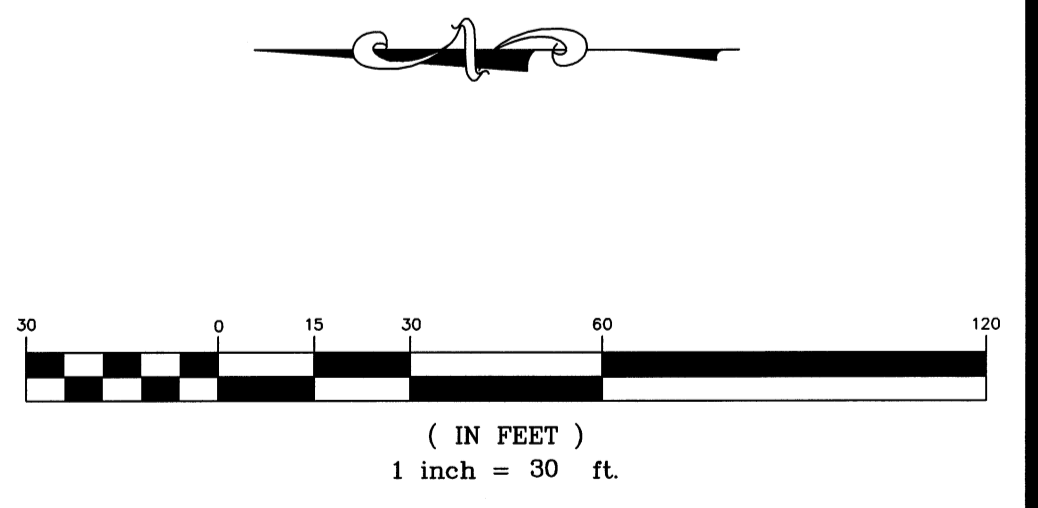
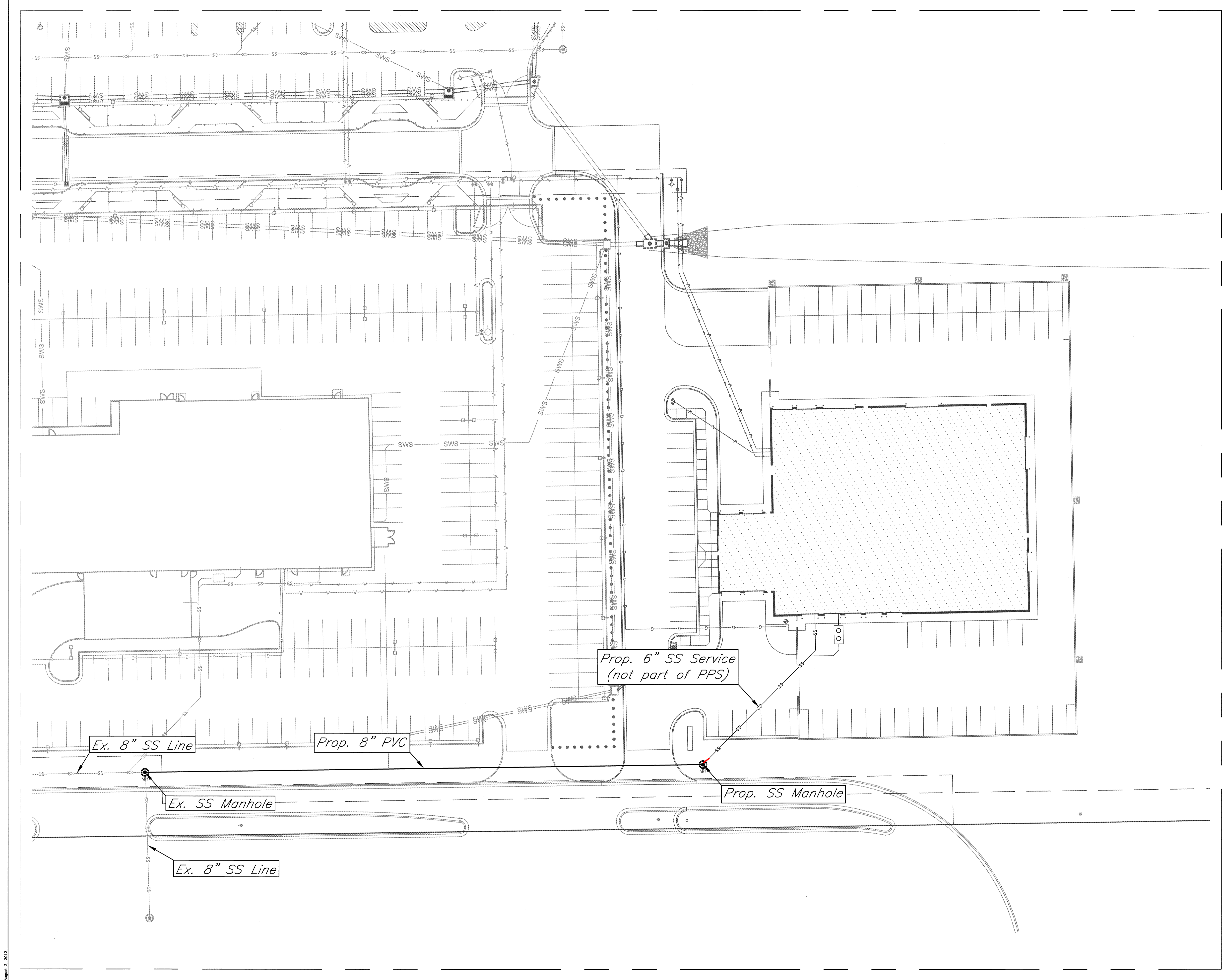
Installation, inspection and testing for this project is to be provided by a Licensed Consulting Engineering Firm under contract with the Owner/Developer. Said inspection to be in accordance with the City of Wichita standard construction engineering practices and certified by a Licensed Professional Engineer. No work shall be performed in dedicated easements or public right-of-way by the Contractor without such inspection nor shall any work be commenced without written authorization by the City Engineer. All Construction and Materials shall comply with the City of Wichita Specifications and Standards (on file and available in the City Engineer's Office).

KANSAS TURNPIKE AUTHORITY (I-35)

August 2012



516 S. Market, Wichita, KS 67202 (316)264-0242



	KEM NO. 12075
	DESIGN KM
	DRAWN NS

516 S. Market, Wichita, KS 67202 (316)264-0242

SPANGENBERG PHILLIPS TICE
ARCHITECTURE
 121 N Mead Ste 201 Wichita KS 67202
 T 316.267.4002 F 316.267.1509
 www.sptarchitecture.com

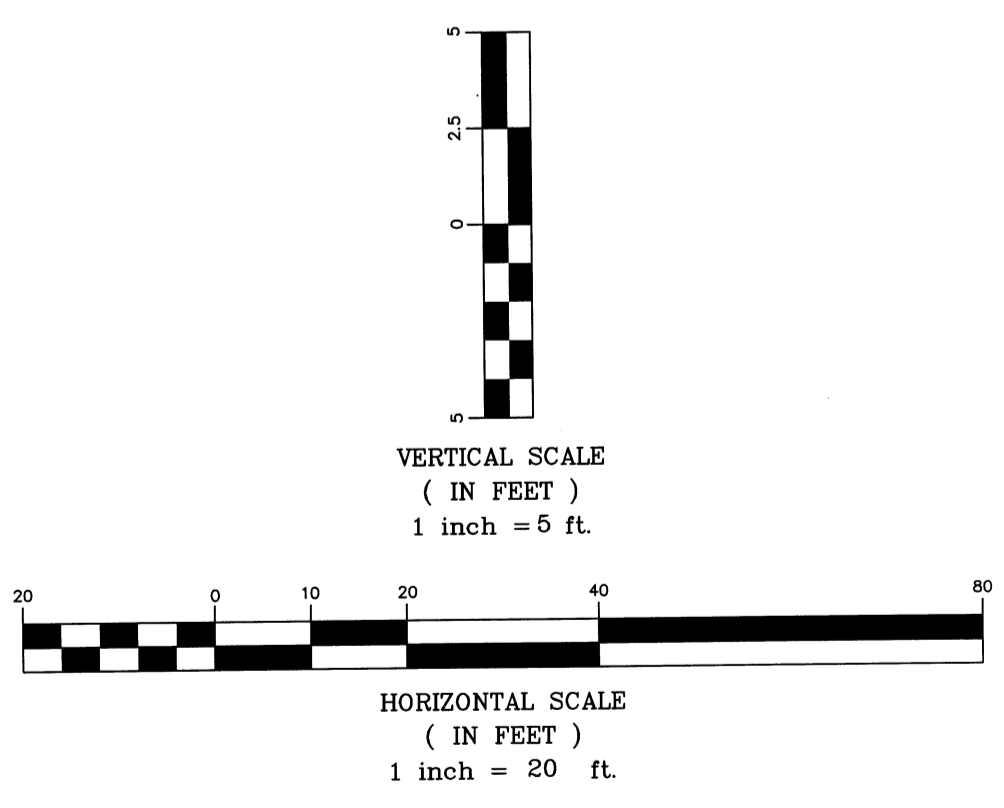
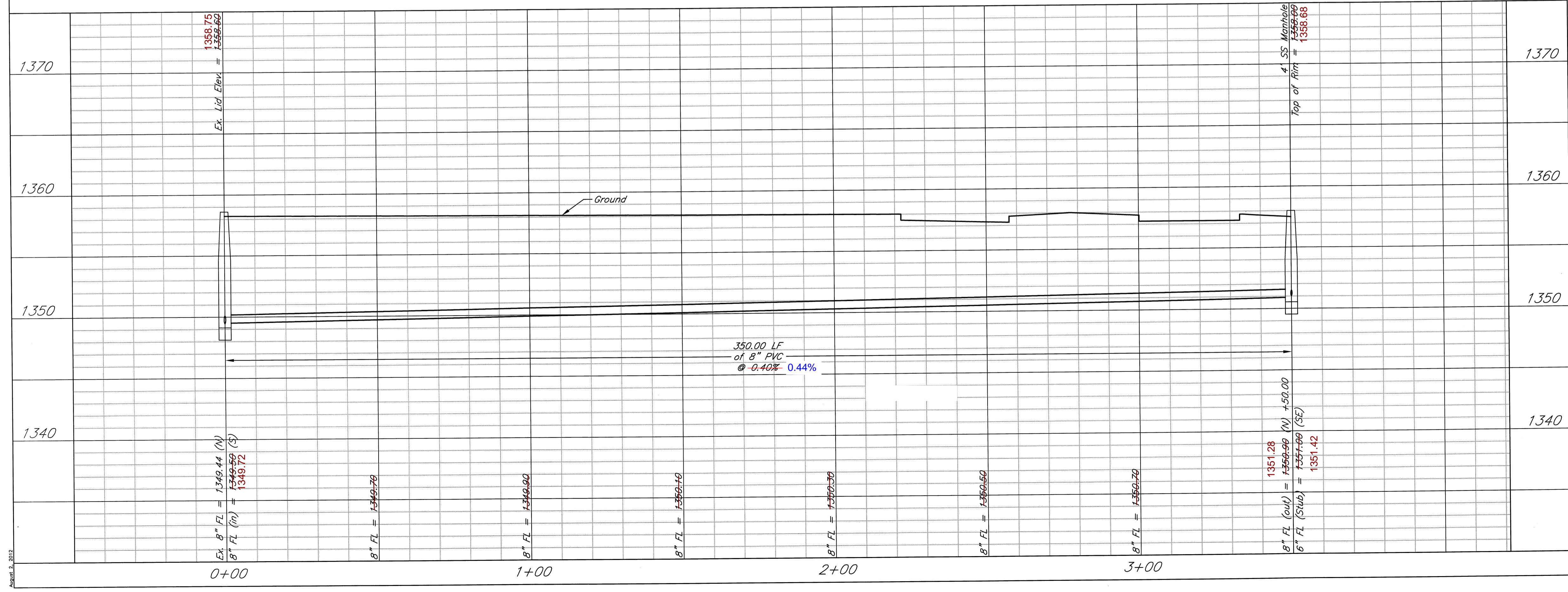
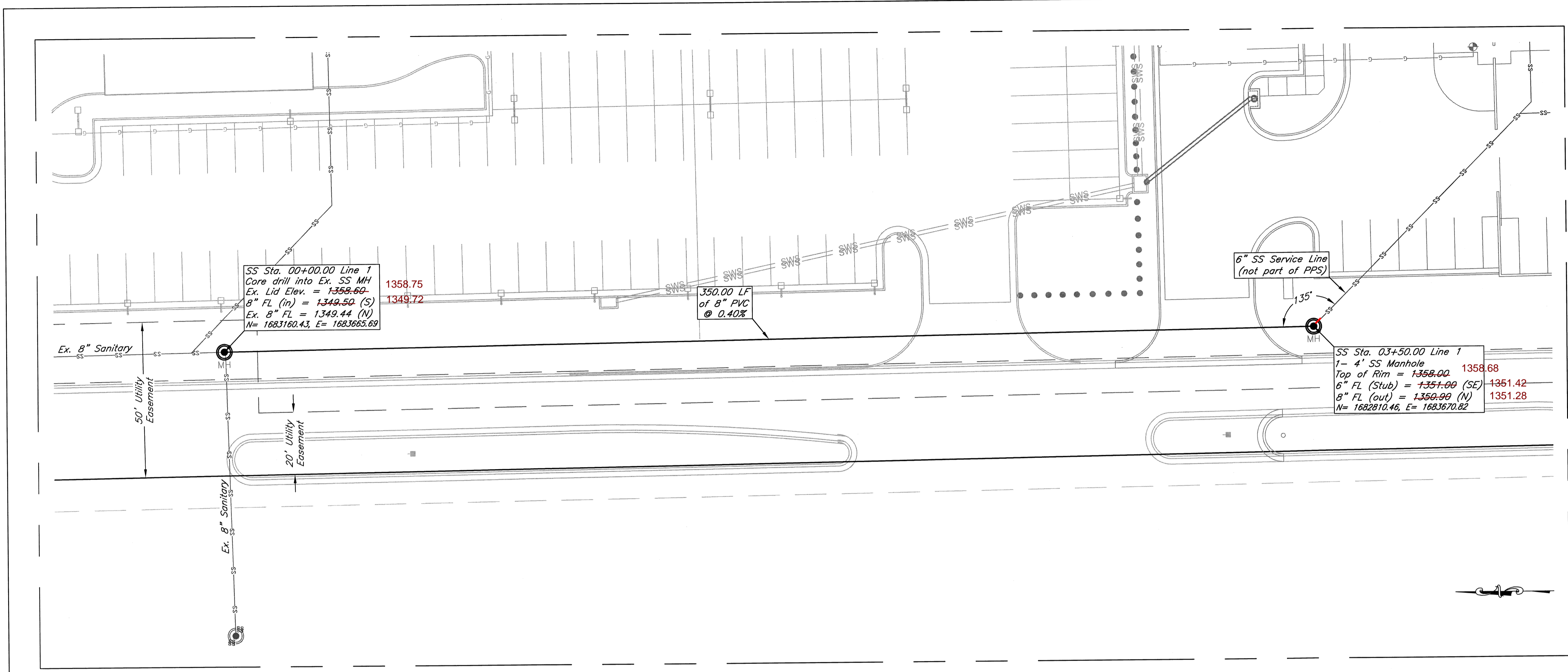


DAVIS-MOORE
COLLISION CENTER EAST
 E. KELLOGG DRIVE, WICHITA KS

2134 PPS (607861)
 Site Overview

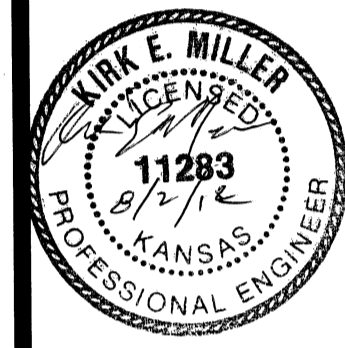
C3.1

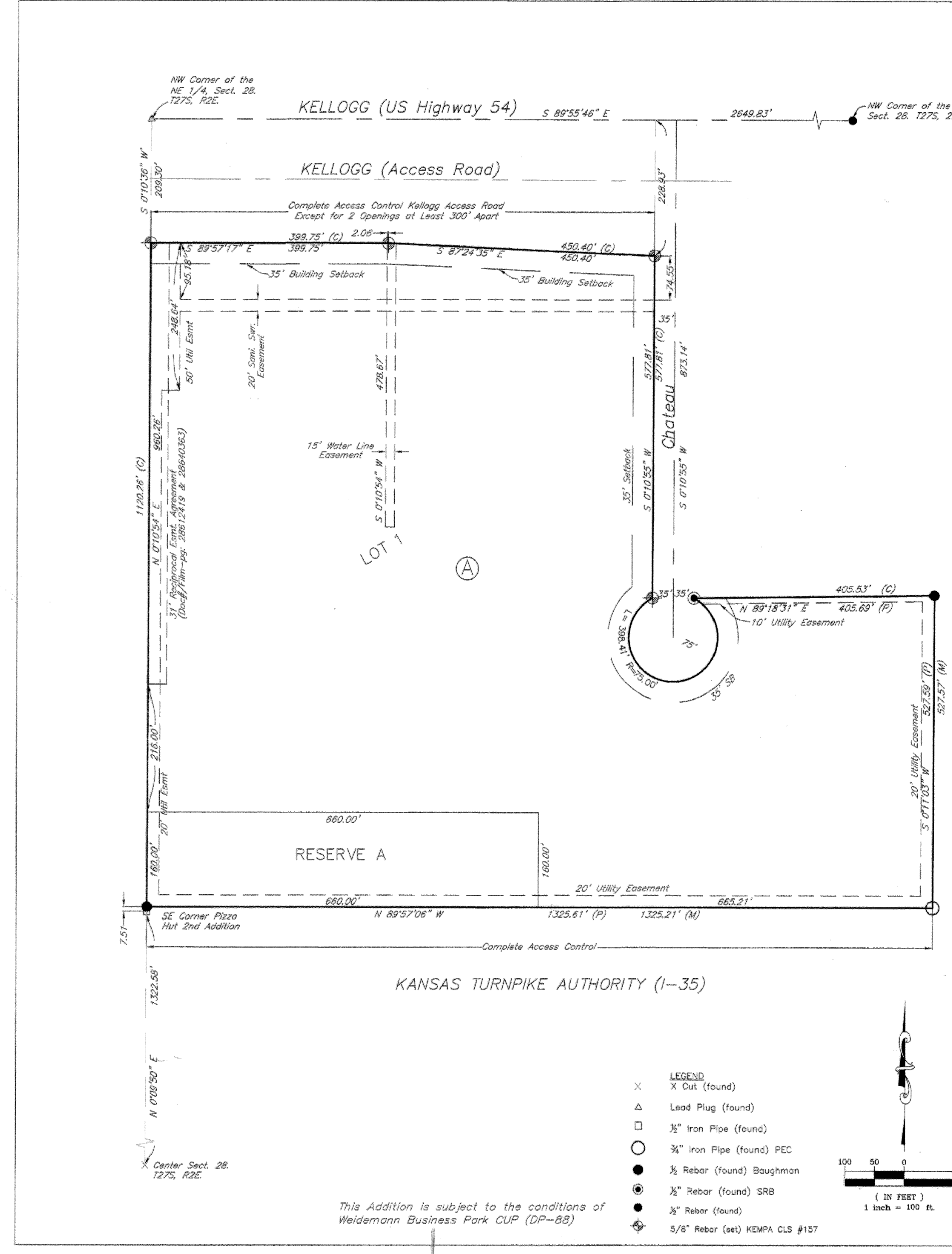
August 3, 2012



kemiller engineering
 516 S. Market, Wichita, KS 67202 (316)264-0242

KEM NO. 12075
DESIGN KM
DRAWN NS





- LEGEND**
- X Cut (found)
 - △ Lead Plug (found)
 - 1/2" Iron Pipe (found)
 - 3/4" Iron Pipe (found) PEC
 - 1/2" Rebar (found) Baughman
 - 1/2" Rebar (found) SRB
 - 1/2" Rebar (found)
 - 5/8" Rebar (set) KEMPA CLS #157

This Addition is subject to the conditions of Weidemann Business Park CUP (DP-88)

DAVIS-MOORE 14th ADDITION

WICHITA, SEDGWICK COUNTY, KANSAS

Part of the NE 1/4, Section 28, Township 27 South, Range 2 East of the 6th. P.M.

State of Kansas }
County of Sedgwick } ss

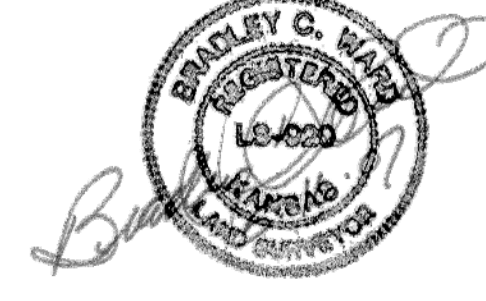
I, Bradley C. Ward, a licensed land surveyor of the State of Kansas, do hereby certify that the following described tract of land was surveyed on the 23rd day of December, 2006 and the accompanying final plat prepared and that all the monuments shown herein actually exist and their positions are correctly shown to the best of my knowledge and belief:

Lots 1 and 2, Block 1 and Lot 1, Block 2 of K.T. Wiedemann Business Park.

Lots 1, 2, and 3, Block 1, Replat of Part of K.T. Wiedemann Business Park.

All being situated in the NE 1/4 of Sec. 28, Twp. 27-S, R-2-E of the 6th P.M., Sedgwick County, Kansas.

All easements and rights-of-way within said lots are hereby vacated by virtue of KSA 12-512(b) amended.



Bradley C. Ward, L.S. #920 date 5-16-07

State of Kansas }
County of Sedgwick } ss

Know all men by these presents, that we, the undersigned, have caused the land described in the surveyor's certificate to be platted into a Lot, Block and a Street and a reserve to be known as Davis-Moore 14th Addition, Sedgwick County, Kansas. Any easements are hereby granted as indicated for constructing, maintaining, operating, and repairing public utilities. A drainage plan has been developed for the plat and all drainage easements, rights-of-way, or reserves shall remain at established grades or as modified with the approval of the applicable City or County Engineer, and unobstructed to allow for the conveyance of stormwater. Reserve A shall be owned and maintained by the owners of Lot 1, Block A, for use of a detention pond and failure to maintain will result in the City maintaining the pond and charging the responsible parties for all related costs. And further that the land contained herein is held and shall be conveyed subject to any applicable restrictions, reservations and covenants now on file or hereafter filed in the Office of the Register of Deeds of Sedgwick County, Kansas.

Access Control is hereby granted as follows:
1. There shall be a maximum of 2 openings on Kellogg Access Road.

By: Stuart L. Kay 5-29-07
Stuart L. Kay Owner date
Davis-Moore Real Estate, L.L.C.

State of Kansas }
County of Sedgwick } ss

This instrument was acknowledged before me on this 29th day of May 2007, by STUART L. KAY, OWNER DAVIS-MOORE REAL ESTATE, L.L.C.

Michele Hill
Notary Public
My Commission Expires: November 18, 2007

We, Intrust Bank, N.A., holders of a mortgage on the above described property, do hereby consent to the plat of Davis-Moore 14th Addition, Wichita, Sedgwick County, Kansas.

By: Gail A. Johnson 5/31/07
Gail A. Johnson SVP, INTRUST BANK DATE

State of Kansas }
County of Sedgwick } ss

This instrument was acknowledged before me on this 31 day of May 2007, by GAIL A. JOHNSON, SVP INTRUST BANK

JOLEEN SIMON
Notary Public
My Commission Expires: 11-14-07
My Commission Expires: 11-14-07

State of Kansas }
City of Wichita } ss

This plat of Davis-Moore 14th Addition, Wichita, Sedgwick County, Kansas, has been submitted to and approved by the Wichita-Sedgwick County Metropolitan Area Planning Commission, Wichita, Kansas. Dated this 21st day of December 2006. Wichita-Sedgwick County Metropolitan Area Planning Commission.

Darrell A. Downing
Darrell A. Downing, Chairman
John L. Schlegel
John L. Schlegel, Secretary



State of Kansas }
City of Wichita } ss

This plat approved and all dedications shown herein accepted by the City Council of the City of Wichita, Kansas, this 26 day of June 2007.

At the Direction of the City Council
Carl Brewer
Carl Brewer, Mayor
Karen Sublett, CMC
Karen Sublett, City Clerk



Entered on transfer record this 5th day of July 2007.

Donda Brace
Donda Brace, County Clerk



State of Kansas }
County of Sedgwick } ss

This is to certify that this plat has been filed for record in the Office of the Register of Deeds this 6th day of July 2007, at 2:58:12 o'clock P.M. and is duly recorded.

Bill Meek
Bill Meek, Register of Deeds
Tonya Buckingham
Tonya Buckingham, Deputy

Reviewed with K.S.A. 58-2005 on this 17th day of July 2007.

Tricia L. Roper
Tricia L. Roper, Notary Public
Deputy County Clerk
Sedgwick County, Kansas

