

**GENERAL NOTES:**

- M.S.L. Datum.
- Contractor will be required to provide a minimum advance notice of seventy-two (72) hours to utility companies prior to starting any excavation as follows:  
 Kansas One-Call 1-800-344-7233  
 The Contractor must notify the following in case of an emergency:  
 Southern Star Pipeline 529-6603  
 Cox Communications 262-4270 or 263-2061  
 Westar Energy 261-6824  
 Kansas Gas Service 832-3121  
 Aquila Networks 941-1608  
 AT&T 268-2102  
 City of Wichita Water Department 268-4908  
 City of Wichita Sewer Maintenance 268-4071
- Existing utility lines and their location, as shown on the plans, represent the best information obtainable for design. Location information has been obtained from the various companies and is either from company utility drawings or company provided field locations. The plan locations shown are not guaranteed. Additional existing utilities may also be encountered. The contractor will be required to work around existing utilities within the right-of-way which do not conflict with proposed construction.
- Rubble from the removal of miscellaneous structures and excess excavation which is to be wasted shall be disposed of on sites to be provided by the Contractor. These sites shall be approved by the Engineer as to suitability, appearance and site location. Locations that, in the opinion of the Engineer, will leave an unsightly appearance will not be approved.  
 All disposal sites must be approved by the Kansas Department of Health and Environment. Material either stockpiled or disposed of in a flood plain would require a Kansas State Board of Agriculture permit. Any material dumped in waters of the United States or wetlands is subject to U.S. Corps. of Engineers permitting regulations. Any material buried or stockpiled beyond approved construction limits would require additional archaeological investigations unless buried in a previously approved borrow location.
- The Contractor shall be responsible for maintaining continuous flow of sewage through construction. Contractor's proposed method for maintaining sewage flow shall be approved by the Engineer. Cost of maintaining flow of sewage through construction will not be paid for directly and this cost shall be considered as subsidiary to the other pay items of the work.
- The Contractor shall be responsible for preserving property irons. The Contractor will be required to re-establish any property irons which are damaged or destroyed by his construction operations. Such irons shall be re-established by a licensed land surveyor in accordance with state laws.
- Trees and shrubs in public right-of-way which are in direct conflict with proposed new construction shall be removed by the Contractor with the Engineer's approval. Trees and shrubs which are not in direct conflict with the proposed new construction shall be saved and protected from damage.
- Contractor shall vacuum test all manholes according to the City of Wichita standard specifications.
- The tops of all Manholes to be set 0.4 feet above existing ground unless otherwise noted.
- All areas disturbed by sewer construction, i.e. R/W, easements, and adjacent properties shall be restored with the same grass/sod as per AR 78.
- Contractor shall maintain all existing BMP(s) on project site during construction. Contractor shall repair or replace any existing BMP(s) that are damaged (Cost subsidiary to site restoration). If BMP(s) were damaged prior to contractor beginning work on project, notify construction inspector or engineer.
- In street right of way (not under street) and under parking lots, contractor shall backfill trench with sand and flush per City of Wichita specifications. Under pavement within the street right of way, contractor shall backfill trench with flowable fill per City of Wichita specifications.
- Traffic control as necessary shall be per the latest addition of the MUTCD.
- Depth & location of all existing utilities shown must be field verified. Report any discrepancies between plan elevation and field elevations to the engineer.
- Existing flowline information obtained from city records & field survey.

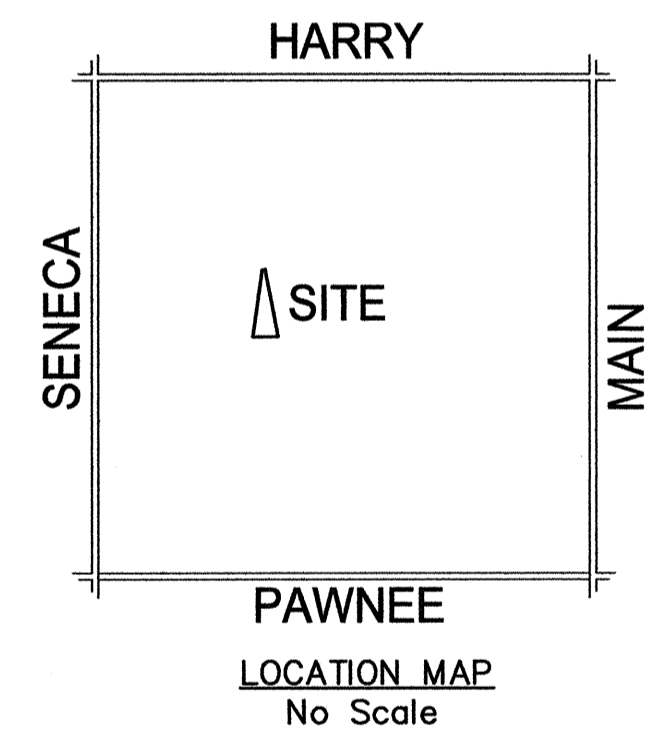
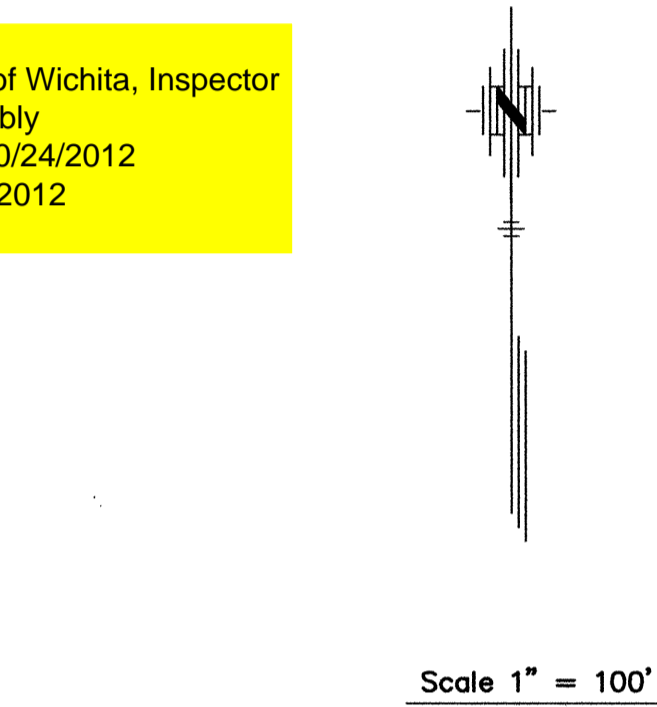
CONSTRUCTION PLANS FOR  
 SANITARY SEWER EXTENSIONS TO SERVE  
**LOTS 372-373,**  
**ROSENTHAL'S 5TH ADDITION**  
 TO  
**THE CITY OF WICHITA, KANSAS**  
 JAMES L. ARMOUR, P.E. - CITY ENGINEER  
 PROJECT NO. 2127 PPS, OCA NO. 607861

**INDEX**

TITLE SHEET	SHEET 1
LINE NO. 1	SHEET 2
CLEANOUT DETAIL	SHEET 3
QUARTER SECTION MAP	SHEET 4

As Built Plans  
 Contractor: Rapid Services  
 Inspector: Jim Dilling, Poe & Associates, Inc.  
 .pdf by S.S., 07/27/2012

T. Mason - City of Wichita, Inspector  
 Cleanout Assembly  
 Release Date: 10/24/2012  
 APRos 10/25/2012



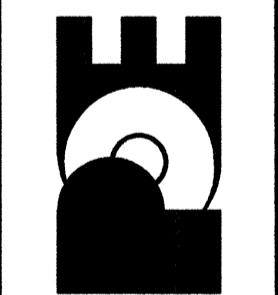
APPROVED AS NOTED BY CITY ENGINEER OF WICHITA  
 SANITARY SEWER *Julianne Kollman 4-9-12*

**AS-BUILT**  
 DATE: 07/27/12

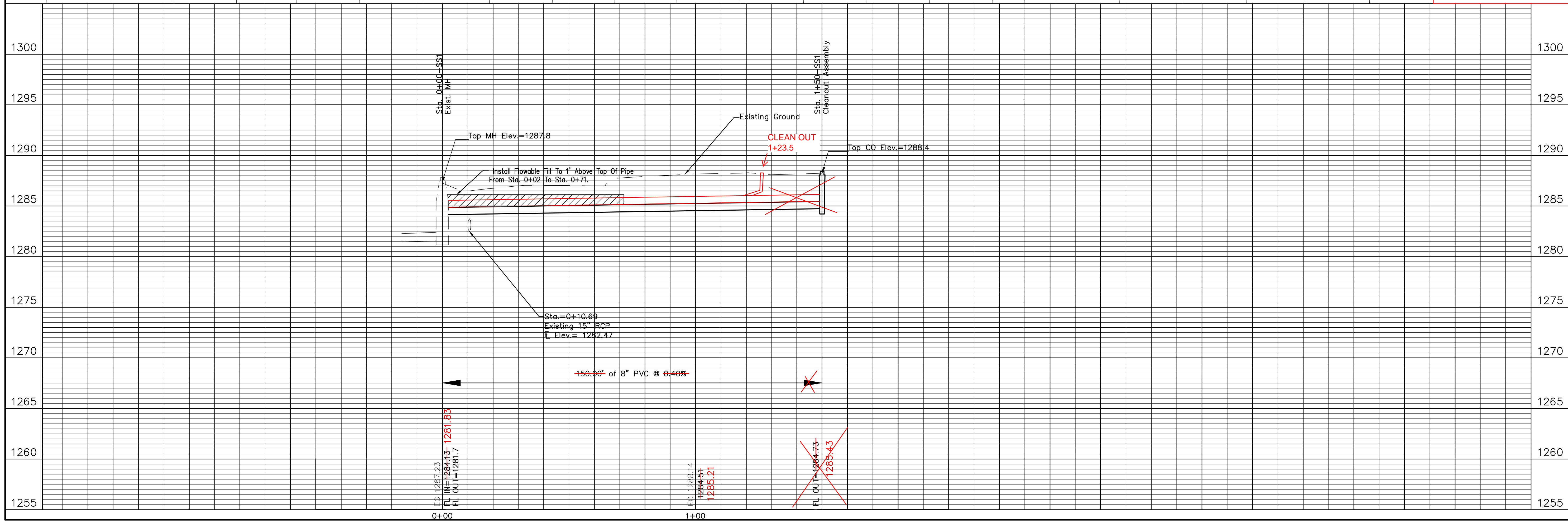
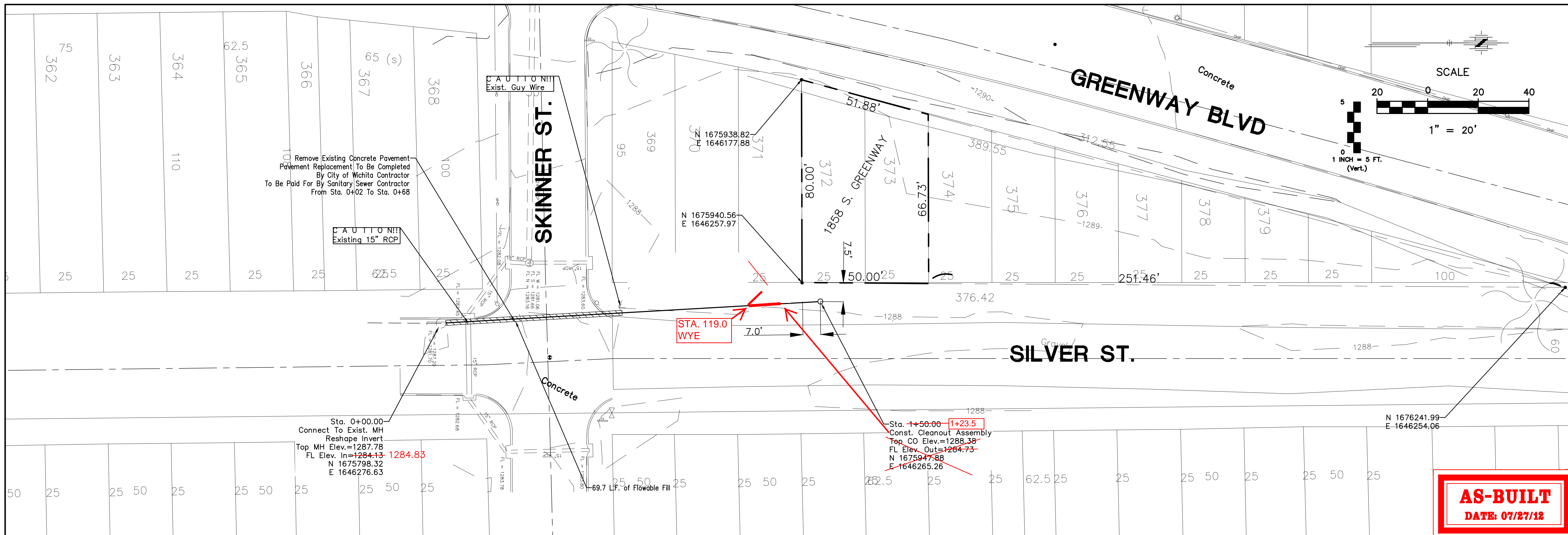
**BENCH MARKS**  
 City of Wichita bench mark disk. SE corner of the intersection of Gold & Mt. Vernon. Approx. 17.7 feet south of the centerline of Mt. Vernon and 40.5 feet East of the centerline of Gold St.  
 Elevation 1187.4 M.S.L. (Elevation 0.00 city datum)

LOTS 372-373, ROSENTHAL'S 5TH ADDITION  
 PRIVATE SANITARY SEWER IMPROVEMENTS  
 CITY OF WICHITA, KANSAS  
 JAMES L. ARMOUR, P.E. - CITY ENGINEER  
 2127 PPS OCA NO. 607861

POE & ASSOCIATES, INC.  
 CONSULTING ENGINEERS  
 5940 E. Central, Suite 200 Wichita, KS  
 67208-4242  
 Phone 316/685-4114 FAX 316/685-4444



Engineer: J. DICKMAN  
 Designer: S. SCHMIDT  
 Job No.: 1858  
 Date: APRIL 2012



LOT 372-373, ROSENTHAL'S 5TH ADDITION  
PRIVATE SANITARY SEWER IMPROVEMENTS

CITY OF WICHITA, KANSAS  
JAMES L. ARMOUR, P.E. - CITY ENGINEER  
2127 PPS OCA NO. 607861

POE & ASSOCIATES, INC.  
CONSULTING ENGINEERS  
5940 E. Central, Suite 200 Wichita, KS  
67208-4242  
Phone 316/685-4114 FAX 316/685-4444

Engineer: J. DICKMAN  
Designer: S. SCHMIDT  
Proj. Job No.: 1558  
Date: APRIL 2012

Sheet 02 of 4

No.	Date	By	Approved	Revision



